



DATE: June 1, 2026

Addendum No. 1

TO: PLAN HOLDERS

PREPARED BY: *Dana Wright* 2026.06.01
13:28:20 -07'00'
Dana Wright

APPROVED BY: Digitally Signed 2026.06.01
13:26:17 -07'00' P.E.
Lindsey McCullough

FINAL ELECTRONIC DOCUMENT AVAILABLE UPON REQUEST

SUBJECT: I-84: Bridges Over North Spruce Street (La Grande) Project
Old Oregon Trail Highway
Union County
Grading, Drainage, Structure & Paving
(Bids Closing June 11, 2026)

The following changes are made to the Project Bid Booklet:

1. The following changes are made to the Project Bid Items:
 - a. Added items:

<u>Number</u>	<u>Item</u>	<u>Unit</u>	<u>Quantity</u>
1230	Flaggers	Hour	160
1240	Temporary Barricades, Type II	Each	6
1250	Pedestrian Channelizing Devices	Foot	30

Make a copy of and use the new attached Bid Schedule if submitting a paper Bid. If submitting an electronic Bid through BidExpress®, delete all prior downloaded bid files and use the Zip file available on BidExpress® by selecting “All Bid Files and Amendments” that includes the new updates in the attached Bid Schedule. A Bid **not** including this new Bid Schedule **will be rejected as non-responsive**.

Make copies of the new attached Bid Schedule to replace the Bid Schedule in the Project Special Provisions.

The following changes are made to the Project Plans:

1. Plan sheet A02 is replaced with revised plan sheet A02.
2. Plan sheet EA01 is replaced with revised plan sheet EA01

These changes will be included in the Contract for this Project. It is understood that your Bid must and shall be submitted accordingly.

dw:LM

Attachments: New Bid Schedule
Revised Plan Sheets

**OREGON DEPARTMENT OF TRANSPORTATION
BID SCHEDULE**

CONTRACT NO.: 15670 **PROJECT:** I-84: BRIDGES OVER NORTH SPRUCE STREET (LA GRANDE)
PROJECT KEY: 22930 **ADDENDUM NO.:** 1

ITEM NO	ITEM DESCRIPTION	QUANTITY AND UNITS	UNIT PRICE	BID AMOUNT
			(IN FIGURES)	(IN FIGURES)
SECTION: 0001 TEMPORARY FEATURES AND APPURTENANCES				
0010	0210-0100000A MOBILIZATION	ALL LUMP SUM		
0020	0221-0100000A TEMPORARY PROTECTION AND DIRECTION OF TRAFFIC	ALL LUMP SUM		
0030	0222-0102000J TEMPORARY SIGNS	1,100.00 SQFT		
0040	0222-0162000E SEQUENTIAL ARROW SIGNS	2.00 EACH		
0050	0222-0164000E PORTABLE CHANGEABLE MESSAGE SIGNS	3.00 EACH		
0060	0222-0167500E RADAR SPEED TRAILER	2.00 EACH		
0070	0224-0105000E TEMPORARY BARRICADES, TYPE III	9.00 EACH		
0080	0224-0142000E SURFACE MOUNTED TUBULAR MARKERS	400.00 EACH		
0090	0224-0143000E REPLACE SURFACE MOUNTED TUBULAR MARKERS	40.00 EACH		
0100	0224-0145000E TEMPORARY PLASTIC DRUMS	500.00 EACH		
0110	0224-0147000E TEMPORARY DELINEATORS	100.00 EACH		
0120	0225-0153000F TEMPORARY STRIPING	58,000.00 FOOT		
0130	0225-0154000F STRIPE REMOVAL	92,250.00 FOOT		

**OREGON DEPARTMENT OF TRANSPORTATION
BID SCHEDULE**

CONTRACT NO.: 15670 **PROJECT:** I-84: BRIDGES OVER NORTH SPRUCE STREET (LA GRANDE)
PROJECT KEY: 22930 **ADDENDUM NO.:** 1

ITEM NO	ITEM DESCRIPTION	QUANTITY AND UNITS	UNIT PRICE	BID AMOUNT
			(IN FIGURES)	(IN FIGURES)
0140	0226-0117000E TEMPORARY GUARDRAIL TRANSITION	1.00 EACH		
0150	0226-0119000E TEMPORARY BRIDGE CONNECTIONS	1.00 EACH		
0160	0226-0126100F TEMPORARY BARRIER	600.00 FOOT		
0170	0226-0134000E TEMPORARY IMPACT ATTENUATOR, NARROW SITE SYSTEM	2.00 EACH		
0180	0226-0137000E MOVING TEMPORARY IMPACT ATTENUATORS, NARROW SITE SYSTEM	2.00 EACH		
0190	0226-0138000E TEMPORARY IMPACT ATTENUATOR, TRUCK MOUNTED	2.00 EACH		
0200	0226-0141300E REPAIR TEMPORARY IMPACT ATTENUATOR, NARROW SITE SYSTEM	1.00 EACH		
0210	0226-0141400E REPAIR TEMPORARY IMPACT ATTENUATOR, TRUCK MOUNTED	1.00 EACH		
0220	0280-0100000A EROSION CONTROL	ALL LUMP SUM		
0230	0280-0110000A EROSION AND SEDIMENT CONTROL MANAGER	ALL LUMP SUM		
0240	0280-0114030E INLET PROTECTION, TYPE 3	9.00 EACH		
0250	0280-0115030F SEDIMENT BARRIER, TYPE 3	440.00 FOOT		
0260	0290-0100000A POLLUTION CONTROL PLAN	ALL LUMP SUM		

**OREGON DEPARTMENT OF TRANSPORTATION
 BID SCHEDULE**

CONTRACT NO.: 15670 **PROJECT:** I-84: BRIDGES OVER NORTH SPRUCE STREET (LA GRANDE)
PROJECT KEY: 22930 **ADDENDUM NO.:** 1

ITEM NO	ITEM DESCRIPTION	QUANTITY AND UNITS	UNIT PRICE	BID AMOUNT
			(IN FIGURES)	(IN FIGURES)
0270	0295-0300000J REMOVE ASBESTOS MATERIAL, FRIABLE	10.00 SQFT		
SECTION: 0002 ROADWORK				
0280	0305-0100000A CONSTRUCTION SURVEY WORK	ALL LUMP SUM		
0290	0310-0103000J REMOVAL OF SURFACINGS	160.00 SQYD		
0300	0310-0106000A REMOVAL OF STRUCTURES AND OBSTRUCTIONS	ALL LUMP SUM		
0310	0310-0119110F ASPHALT PAVEMENT SAWCUTTING, LESS THAN 6 INCHES DEEP	410.00 FOOT		
0320	0310-0119120F ASPHALT PAVEMENT SAWCUTTING, 6 TO 14 INCHES DEEP	3,100.00 FOOT		
0330	0310-0119210F CONCRETE SAWCUTTING, LESS THAN 6 INCHES DEEP	120.00 FOOT		
0340	0310-0119220F CONCRETE SAWCUTTING, 6 TO 14 INCHES DEEP	340.00 FOOT		
0350	0320-0100000A CLEARING AND GRUBBING	ALL LUMP SUM		
0360	0330-0101000K DITCH EXCAVATION	140.00 CUYD		
0370	0330-0105000K GENERAL EXCAVATION	2,000.00 CUYD		
0380	0330-0126000K STONE EMBANKMENT	5,500.00 CUYD		

**OREGON DEPARTMENT OF TRANSPORTATION
 BID SCHEDULE**

CONTRACT NO.: 15670 **PROJECT:** I-84: BRIDGES OVER NORTH SPRUCE STREET (LA GRANDE)
PROJECT KEY: 22930 **ADDENDUM NO.:** 1

ITEM NO	ITEM DESCRIPTION	QUANTITY AND UNITS	UNIT PRICE	BID AMOUNT
			(IN FIGURES)	(IN FIGURES)
0390	0331-0112000J 22 INCH SUBGRADE STABILIZATION	50.00 SQYD		
0400	0334-0100000A PREPARATION OF SHOULDERS	ALL LUMP SUM		
0410	0350-0101000J DRAINAGE GEOTEXTILE, TYPE 2	1,400.00 SQYD		
0420	0390-0108000K LOOSE RIPRAP, CLASS 100	110.00 CUYD		

SECTION: 0003 DRAINAGE AND SEWERS

0430	0415-0100000F MAINLINE VIDEO INSPECTION	660.00 FOOT		
0440	0445-010015AF 16 INCH CULVERT PIPE, 5 FT DEPTH	530.00 FOOT		
0450	0445-060016AF 16 INCH DUCTILE IRON PIPE, 5 FT DEPTH	130.00 FOOT		
0460	0460-0100000J PAVED CULVERT END SLOPES	330.00 SQFT		

SECTION: 0004 BRIDGE 09631

0470	0253-0106000A TEMPORARY WORK ACCESS AND CONTAINMENT	ALL LUMP SUM		
0480	0501-0100000A BRIDGE REMOVAL WORK	ALL LUMP SUM		
0490	0505-0100000J CONCRETE DECK MICRO-MILLING, 1 1/2 INCH DEPTH	714.00 SQYD		
0500	0505-0101000J SELECTIVE HYDRODEMOLITION	714.00 SQYD		

**OREGON DEPARTMENT OF TRANSPORTATION
 BID SCHEDULE**

CONTRACT NO.: 15670 **PROJECT:** I-84: BRIDGES OVER NORTH SPRUCE STREET (LA GRANDE)
PROJECT KEY: 22930 **ADDENDUM NO.:** 1

ITEM NO	ITEM DESCRIPTION	QUANTITY AND UNITS	UNIT PRICE	BID AMOUNT
			(IN FIGURES)	(IN FIGURES)
0510	0510-0101000A STRUCTURE EXCAVATION	ALL LUMP SUM		
0520	0510-0108000A GRANULAR STRUCTURE BACKFILL	ALL LUMP SUM		
0530	0540-0401000J SURFACE TEXTURING	889.50 SQYD		
0540	0542-0100000A LOCATE CONCRETE REPAIR	ALL LUMP SUM		
0550	0542-0102001J CONCRETE REPAIR	16.70 SQFT		
0560	0545-0100100J REINFORCED CONCRETE BRIDGE APPROACH SLABS	254.60 SQYD		
0570	0545-0100200F BRIDGE APPROACH SLEEPER SLABS	87.00 FOOT		
0580	0559-0300000K STRUCTURAL CONCRETE OVERLAY MATERIAL	44.60 CUYD		
0590	0559-0302000J CONSTRUCT STRUCTURAL CONCRETE OVERLAY	714.00 SQYD		
0600	0584-0103000C ELASTOMERIC CONCRETE NOSING MATERIAL	17.30 CUFT		
0610	0584-0104000J CONSTRUCTING ELASTOMERIC CONCRETE NOSING	103.80 SQFT		
0620	0585-0215000A PRECOMPRESSED FOAM SILICONE JOINT SEAL	ALL LUMP SUM		
0630	0587-0126000A TYPE "F" CONCRETE RAIL, 42 INCH, MODIFIED	ALL LUMP SUM		
0640	0587-0126100A TYPE "F" CONCRETE RAIL, 42 INCH	ALL LUMP SUM		

**OREGON DEPARTMENT OF TRANSPORTATION
 BID SCHEDULE**

CONTRACT NO.: 15670 **PROJECT:** I-84: BRIDGES OVER NORTH SPRUCE STREET (LA GRANDE)
PROJECT KEY: 22930 **ADDENDUM NO.:** 1

ITEM NO	ITEM DESCRIPTION	QUANTITY AND UNITS	UNIT PRICE	BID AMOUNT
			(IN FIGURES)	(IN FIGURES)
0650	0842-0401000E BRIDGE IDENTIFICATION MARKERS	4.00 EACH		
0660	1999-9Z90000F BRIDGE PROTECTIVE SPLASH BOARD	70.00 FOOT		

SECTION: 0005 BRIDGE 09631A

0670	0253-0106000A TEMPORARY WORK ACCESS AND CONTAINMENT	ALL LUMP SUM		
0680	0501-0100000A BRIDGE REMOVAL WORK	ALL LUMP SUM		
0690	0504-0100000J CLASS 2 PREPARATION	100.70 SQYD		
0700	0505-0100000J CONCRETE DECK MICRO-MILLING, 1 1/2 INCH DEPTH	714.00 SQYD		
0710	0505-0101000J SELECTIVE HYDRODEMOLITION	714.00 SQYD		
0720	0510-0101000A STRUCTURE EXCAVATION	ALL LUMP SUM		
0730	0510-0108000A GRANULAR STRUCTURE BACKFILL	ALL LUMP SUM		
0740	0540-0401000J SURFACE TEXTURING	889.50 SQYD		
0750	0542-0100000A LOCATE CONCRETE REPAIR	ALL LUMP SUM		
0760	0542-0102001J CONCRETE REPAIR	16.70 SQFT		
0770	0545-0100100J REINFORCED CONCRETE BRIDGE APPROACH SLABS	254.60 SQYD		

**OREGON DEPARTMENT OF TRANSPORTATION
BID SCHEDULE**

CONTRACT NO.: 15670 **PROJECT:** I-84: BRIDGES OVER NORTH SPRUCE STREET (LA GRANDE)
PROJECT KEY: 22930 **ADDENDUM NO.:** 1

ITEM NO	ITEM DESCRIPTION	QUANTITY AND UNITS	UNIT PRICE	BID AMOUNT
			(IN FIGURES)	(IN FIGURES)
0780	0545-0100200F BRIDGE APPROACH SLEEPER SLABS	87.00 FOOT		
0790	0559-0300000K STRUCTURAL CONCRETE OVERLAY MATERIAL	44.60 CUYD		
0800	0559-0302000J CONSTRUCT STRUCTURAL CONCRETE OVERLAY	714.00 SQYD		
0810	0584-0103000C ELASTOMERIC CONCRETE NOSING MATERIAL	17.30 CUFT		
0820	0584-0104000J CONSTRUCTING ELASTOMERIC CONCRETE NOSING	103.80 SQFT		
0830	0585-0215000A PRECOMPRESSED FOAM SILICONE JOINT SEAL	ALL LUMP SUM		
0840	0587-0126000A TYPE "F" CONCRETE RAIL, 42 INCH, MODIFIED	ALL LUMP SUM		
0850	0587-0126100A TYPE "F" CONCRETE RAIL, 42 INCH	ALL LUMP SUM		
0860	0842-0401000E BRIDGE IDENTIFICATION MARKERS	4.00 EACH		
0870	1999-9Z90000F BRIDGE PROTECTIVE SPLASH BOARD	70.00 FOOT		

SECTION: 0006 BRIDGE 09630

0880	0501-0100000A BRIDGE REMOVAL WORK	ALL LUMP SUM		
0890	0585-0200100A ASPHALTIC PLUG JOINT SEALS	ALL LUMP SUM		
0900	0842-0401000E BRIDGE IDENTIFICATION MARKERS	2.00 EACH		

**OREGON DEPARTMENT OF TRANSPORTATION
BID SCHEDULE**

CONTRACT NO.: 15670 **PROJECT:** I-84: BRIDGES OVER NORTH SPRUCE STREET (LA GRANDE)
PROJECT KEY: 22930 **ADDENDUM NO.:** 1

ITEM NO	ITEM DESCRIPTION	QUANTITY AND UNITS	UNIT PRICE	BID AMOUNT
			(IN FIGURES)	(IN FIGURES)
0910	1999-9Z90000E PATCH SHALLOW REBAR	4.00 EACH		

SECTION: 0007 BRIDGE 09630A

0920	0501-0100000A BRIDGE REMOVAL WORK	ALL LUMP SUM		
0930	0585-0200100A ASPHALTIC PLUG JOINT SEALS	ALL LUMP SUM		
0940	0842-0401000E BRIDGE IDENTIFICATION MARKERS	2.00 EACH		
0950	1999-9Z90000E PATCH SHALLOW REBAR	4.00 EACH		

SECTION: 0008 BASES

0960	0610-0103000A RECONDITIONING EXISTING ROADWAY	ALL LUMP SUM		
0970	0620-0111000J COLD PLANE PAVEMENT REMOVAL, 1 - 2 INCHES DEEP	1,500.00 SQYD		
0980	0620-0120000J COLD PLANE PAVEMENT REMOVAL, 2 INCHES DEEP	9,300.00 SQYD		
0990	0620-0124000J COLD PLANE PAVEMENT REMOVAL, 5 INCHES DEEP	240.00 SQYD		
1000	0641-0102000M AGGREGATE BASE	5,700.00 TON		

SECTION: 0009 WEARING SURFACES

**OREGON DEPARTMENT OF TRANSPORTATION
 BID SCHEDULE**

CONTRACT NO.: 15670 **PROJECT:** I-84: BRIDGES OVER NORTH SPRUCE STREET (LA GRANDE)
PROJECT KEY: 22930 **ADDENDUM NO.:** 1

ITEM NO	ITEM DESCRIPTION	QUANTITY AND UNITS	UNIT PRICE	BID AMOUNT
			(IN FIGURES)	(IN FIGURES)
1010	0705-0101000M EMULSIFIED ASPHALT IN FOG COAT	4.40 TON		
1020	0745-0322000M LEVEL 3, 1/2 INCH LIME TREATED ACP	6,000.00 TON		
1030	0745-0622000M PG 64-28 ASPHALT IN LEVEL 3, 1/2 INCH LIME TREATED ACP	360.00 TON		
1040	0746-0100000F CRACK SEALING	410.00 FOOT		
1050	0755-0108000J CONTINUOUSLY REINFORCED CONCRETE PAVEMENT 12 INCHES THICK	560.00 SQYD		
1060	0755-0400000F TERMINAL EXPANSION JOINT	96.00 FOOT		
1070	0755-0400000F TERMINAL EXPANSION JOINT SLEEPER SLAB	96.00 FOOT		
1080	0758-0100000J CONTINUOUSLY REINFORCED CONCRETE PAVEMENT REPAIR	320.00 SQYD		
1090	1999-9Z90000I CONCRETE PAVEMENT SAWCUT TEXTURING	560.00 SQYD		

SECTION: 0010 PERMANENT TRAFFIC SAFETY AND GUIDANCE DEVICES

1100	0810-0126000E GUARDRAIL TRANSITION	10.00 EACH		
1110	0810-0129000E GUARDRAIL TERMINALS, NON-FLARED	10.00 EACH		
1120	0810-0146100F MIDWEST GUARDRAIL SYSTEM, TYPE 2A	1,700.00 FOOT		

**OREGON DEPARTMENT OF TRANSPORTATION
BID SCHEDULE**

CONTRACT NO.: 15670 **PROJECT:** I-84: BRIDGES OVER NORTH SPRUCE STREET (LA GRANDE)
PROJECT KEY: 22930 **ADDENDUM NO.:** 1

ITEM NO	ITEM DESCRIPTION	QUANTITY AND UNITS	UNIT PRICE	BID AMOUNT
			(IN FIGURES)	(IN FIGURES)
1130	0810-0146100F MIDWEST GUARDRAIL SYSTEM, TYPE 3	140.00 FOOT		
1140	0810-0147000E GUARDRAIL HEIGHT CONVERSION, TYPE 2A	5.00 EACH		
1150	0830-0115000E IMPACT ATTENUATOR, TYPE BARRELS	3.00 EACH		
1160	0840-0100000E DELINEATORS, TYPE 1	8.00 EACH		
1170	0856-0101000E PERMANENT SURFACE MOUNTED TUBULAR MARKERS	21.00 EACH		
1180	0857-0101500L GAP PATTERN RUMBLE STRIPS	3.00 MILE		
1190	0866-0114000F PLURAL COMPONENT, SPRAYED, GROOVED	62,000.00 FOOT		

SECTION: 0011 PERMANENT TRAFFIC CONTROL AND ILLUMINATION SYSTEMS

1200	0905-0101000A REMOVE AND REINSTALL EXISTING SIGNS	ALL LUMP SUM		
------	---	-----------------	--	--

SECTION: 0012 RIGHT-OF-WAY DEVELOPMENT AND CONTROL

1210	1030-0108000R PERMANENT SEEDING	1.00 ACRE		
1220	1050-0240000F REMOVING AND REBUILDING FENCE	96.00 FOOT		

SECTION: 0013 ADDED BID ITEMS

**OREGON DEPARTMENT OF TRANSPORTATION
BID SCHEDULE**

CONTRACT NO.: 15670 **PROJECT:** I-84: BRIDGES OVER NORTH SPRUCE STREET (LA GRANDE)
PROJECT KEY: 22930 **ADDENDUM NO.:** 1

ITEM NO	ITEM DESCRIPTION	QUANTITY AND UNITS	UNIT PRICE	BID AMOUNT
			(IN FIGURES)	(IN FIGURES)
1230	0223-0168000T FLAGGERS	160.00 HOUR		
1240	0224-0104000E TEMPORARY BARRICADES, TYPE II	6.00 EACH		
1250	0228-0141600F PEDESTRIAN CHANNELIZING DEVICES	30.00 FOOT		

TOTAL BID: _____

INDEX OF SHEETS, CONT.

ROADWAY DETAILS	
SHEET NO.	DESCRIPTION
BA01 thru BA03 incl.	Typical Sections
CONTINUOUSLY REINFORCED CONCRETE PAVEMENT DETAILS	
BB101 thru BB104 incl.	Details
MISC. DETAILS	
BB201 thru BB204 incl.	Details
BC01	Pipe Data

ROADWAY CONSTRUCTION	
C01	General Construction
C01A	General Construction Notes
C01B	Profiles
C02	General Construction
C02A	General Construction Notes
C02B	Profiles
C03	General Construction
C03A	Construction Notes & Profiles
C04	General Construction
C04A	Construction Notes & Profiles

TRAFFIC CONTROL	
EA01 thru EA02 incl.	Traffic Control Details
STAGE I	
EB01 thru EB09 incl.	Traffic Control Plan
STAGE II	
EC01 thru EC09 incl.	Traffic Control Plan

EROSION CONTROL	
PHASE 1: DEMOLITION, CLEARING, GRADING, EXCAVATION	
FB01 thru FB03 incl.	Erosion and Sediment Control Plan
PHASE 2: STREET & UTILITIES	
FB04 thru FB06 incl.	Erosion and Sediment Control Plan
PHASE 3: FINAL STABILIZATION	
FB07 thru FB09 incl.	Erosion and Sediment Control Plan

GEOTECHNICAL	
GE01	Material Source Site Plan
GE02	Cross Sections

BRIDGE		
SHEET NO.	B.D.S. DWG. NO.	DESCRIPTION
STRUCTURE #09630, #09630A, #09631 & #09631A		
J01	114060	Location Map, Gen. Notes and Misc. Details
J02	114061	Bridge Rail Details
J03	114062	Sleeper Slab Details
J04	114063	Approach Slab Details
JA01	114064	BR09630 Plan, Notes and Details
JB01	114065	BR09630A Plan, Notes and Details
JC01	114066	BR09631 Plan, Notes and Details
JD01	114067	BR09631A Plan, Notes and Details

Standard Dwg. Nos.

- RD150 - Slope Rounding
- RD300 - Trench Backfill, Bedding, Pipe Zone And Multiple Installations
- RD319 - Miscellaneous Culvert Details
- RD320 - Paved End Slope For Culverts 60" Maximum Pipe Size
- RD388 - Fill Height Tables For PVC Pipe
- RD402 - Midwest Guardrail System Types
- RD403 - Midwest Guardrail System Wood Post And Block
- RD404 - Midwest Guardrail System Steel Post And Block
- RD407 - Midwest Guardrail System (W-Beam)
- RD410 - Thrie Beam Guardrail Transition
- RD416 - Midwest Guardrail System Standard Hardware (Nuts, Bolts, Washers And Misc.)
- RD419 - Midwest Guardrail System Grading For Terminals
- RD420 - Midwest Guardrail System Non-Flared Energy-Absorbing Terminal
- RD442A - Midwest Guardrail System Placement at Bridge Ends
- RD451 - Wood Breakaway Posts
- RD481 - Midwest Guardrail System Height Conversion
- RD482 - Midwest Guardrail System Type 3 (Nested W-Beam)
- RD500 - 32" Concrete Barrier Type "F" Precast
- RD501 - 32" Concrete Barrier Type "F" Precast Reinforcing
- RD503 - Precast Concrete Barrier Pin and Loop Assembly For Temporary Installation And Maintenance Purposes Only
- RD610 - Asphalt Concrete Pavement (ACP) Details
- RD615 - Surface Edge Details
- RD810 - Barbed And Woven Wire Fences
- RD1010 - Inlet Protection Type 2, 3, 6, 7, 10 And 11
- RD1030 - Sediment Barrier Type 2, 3 And 4
- BR157 - Asphaltic Plug Joint Seal
- BR165 - Bridge Approach Slab
- BR195 - Bridge ID Marker
- BR200 - Type "F" Concrete Rail
- BR203 - Transition Type "F" Concrete Rail to Guardrail
- BR241 - Protective Fencing Details-1
- BR290 - Type "F" Concrete Rail, 42 Inch
- BR291 - Transition Type "F" Concrete Rail, 42 Inch to Guardrail
- BR500 - Concrete Repair

Standard Dwg. Nos., Cont.

- TM200 - Sign Installation Details
- TM201 - Miscellaneous Sign Placement Details
- TM500 - Pavement Marking Standard Detail Blocks
- TM521 - Durable & High Performance Pavement Markings Surface & Groove Installed
- TM560 - Alignment Layout: General
- TM570 - Traffic Delineators
- TM571 - Traffic Delineators Steel Post Details
- TM577 - Traffic Delineator Installation for Special Applications
- TM675 - Extruded Aluminum Panels
- TM676 - Sign Attachments
- TM681 - Perforated Steel Square Tube (PSST) Sign Support Installation
- TM687 - Perforated Steel Square Tube (PSST) Anchor Foundation
- TM800 - Tables, Abrupt Edge and PCMS Details
- TM820 - Temporary Barricades
- TM821 - Temporary Sign Supports
- TM822 - Temporary Sign Supports
- TM833 - Temporary Impact Attenuators
- TM844 - Temporary Pedestrian Accessible Routes
- TM850 - 2-Lane, 2-Way Roadways
- TM855 - 2-Lane, 2-Way Roadways
- TM860 - Freeway Sections-Ramps



R/W Map No.: 8B-36-3

No.	DATE	REVISIONS	BY
①	05-28-26	Added TM844	L.M.M.



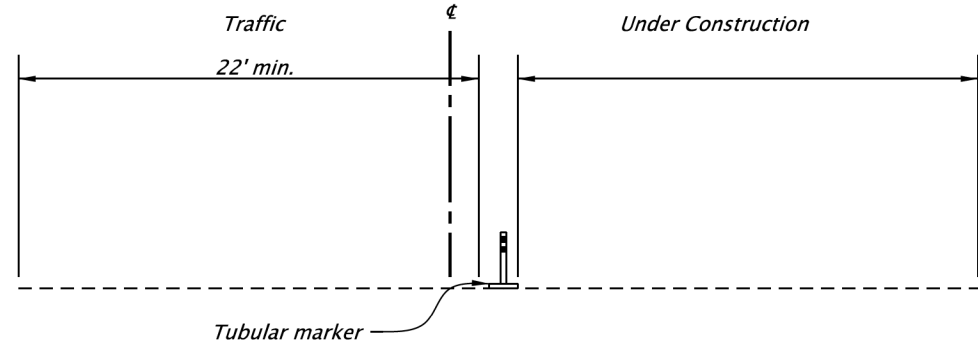
**I-84: BRIDGES OVER NORTH SPRUCE STREET
(LA GRANDE) PROJECT
OLD OREGON TRAIL HIGHWAY
UNION COUNTY**

FEDERAL HIGHWAY ADMINISTRATION	PROJECT NUMBER	SHEET NO.
OREGON DIVISION	SEE SHEET A01	A02

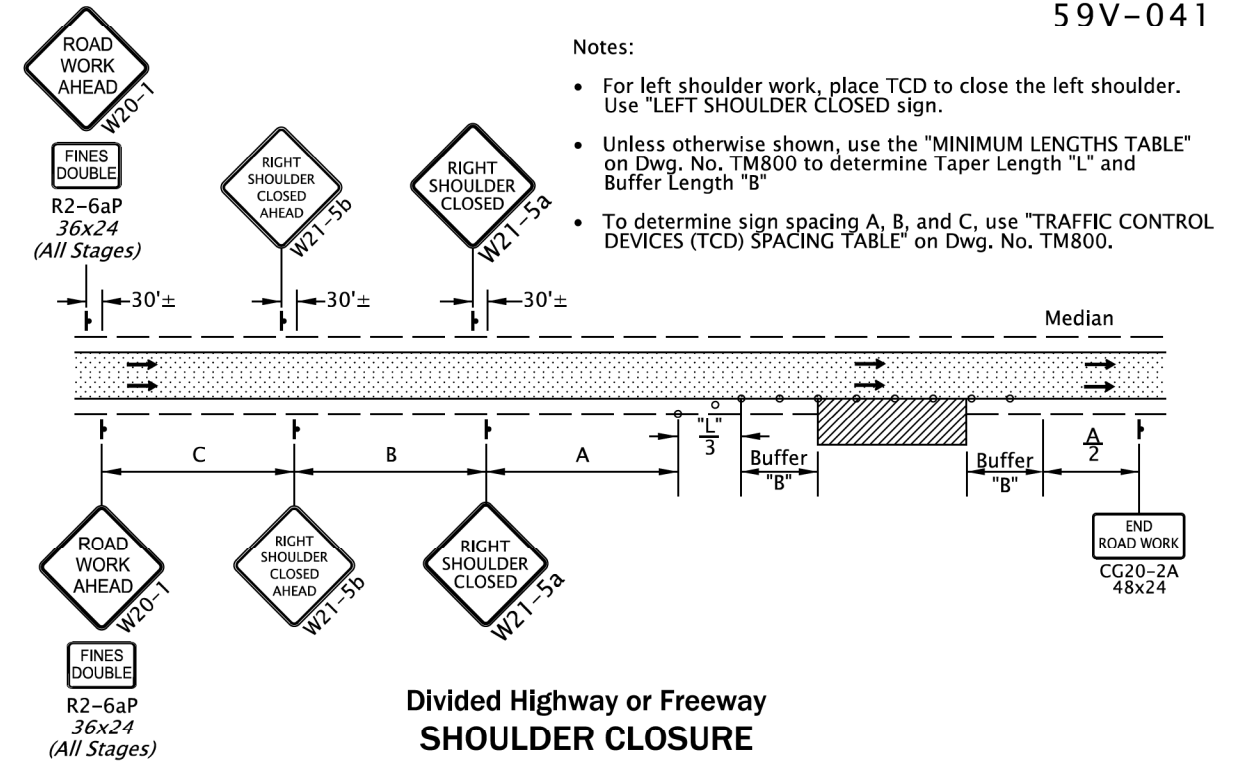
Standard Drawings located on the web at:
<http://www.oregon.gov/ODOT/Engineering/Pages/Standards.aspx>

FREEWAY SPEED REDUCTION

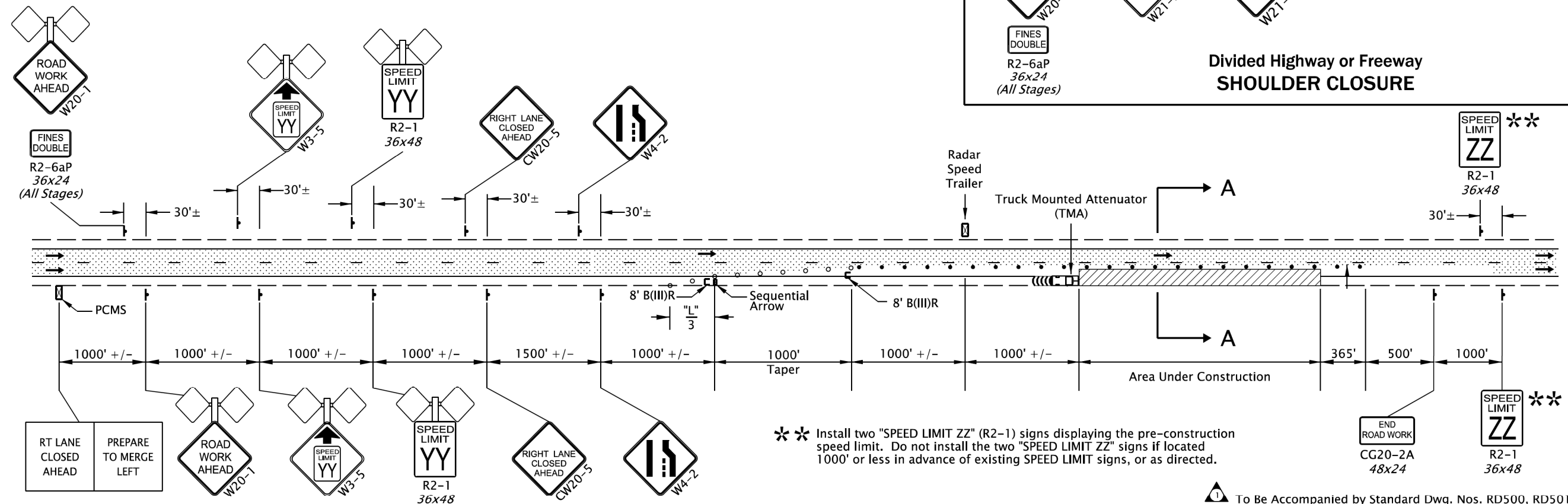
59V-041



SECTION A-A



- Notes:
- For left shoulder work, place TCD to close the left shoulder. Use "LEFT SHOULDER CLOSED" sign.
 - Unless otherwise shown, use the "MINIMUM LENGTHS TABLE" on Dwg. No. TM800 to determine Taper Length "L" and Buffer Length "B"
 - To determine sign spacing A, B, and C, use "TRAFFIC CONTROL DEVICES (TCD) SPACING TABLE" on Dwg. No. TM800.



** Install two "SPEED LIMIT ZZ" (R2-1) signs displaying the pre-construction speed limit. Do not install the two "SPEED LIMIT ZZ" signs if located 1000' or less in advance of existing SPEED LIMIT signs, or as directed.

To Be Accompanied by Standard Dwg. Nos. RD500, RD501, RD503, TM500, TM800, TM820 - TM822, TM833, TM844, TM850, TM855, TM860

- Notes:
- Speed Limit of "YY" shown on signs to be determined by an approved Speed Zone Order from the State Traffic Engineer.
 - Do not delineate Radar Speed Trailer. Locate Trailer as shown, or as directed.
 - Cover all permanent signs conflicting with temporary signing.
 - Excavate and construct concrete repair in the same work shift. Use aggregate wedge according to TM800 when abrupt edge is 2 inches or greater.
 - For work in the left lane, place TCD to close the left lane. Use "LEFT LANE CLOSED AHEAD" (CW20-5) signs and the appropriate "LEFT LANE ENDS" (W4-2) signs.
 - To determine Taper Length "L" use the "MINIMUM LENGTHS TABLE" on Dwg. No. TM800
 - Limit lane closure length to 2.5 miles, or as directed

No.	DATE	REVISIONS	BY
1	05-31-26	Added TM844	T.K.O.

- Temp. Plastic Drums @ 40 ft. max. spacing.
- 28" Tubular Markers @ 40 ft. max. spacing.

UNDER TRAFFIC
UNDER CONSTRUCTION

REGISTERED PROFESSIONAL ENGINEER
19,455
Digitally Signed 2026.06.01 05:05:39 -07'00'
MARK J. KIGHTLINGER
SEPT. 16, 1997
OREGON
RENEWS: 6-30-2027

OREGON DEPARTMENT OF TRANSPORTATION

I-84: BRIDGES OVER NORTH SPRUCE STREET (LA GRANDE) PROJECT
OLD OREGON TRAIL HIGHWAY
UNION COUNTY

Designer: Kyle O'Brien
CADD Tech: Kyle O'Brien

Reviewer: Mark J. Kightlinger
Checker: Mark J. Kightlinger

TRAFFIC CONTROL DETAILS

SHEET NO. EA01