

<b>AMENDMENT OF SOLICITATION/MODIFICATION OF CONTRACT</b>			1. CONTRACT ID CODE N/A	PAGE 1 of 3
2. AMENDMENT/MODIFICATION NO. <b>A003</b>	3. EFFECTIVE DATE <b>06/09/2026</b>	4. REQUISITION/PURCHASE NO. N/A		5. PROJECT NO. (If applicable) See Blk 14
6. ISSUED BY Department of Transportation Federal Highway Administration 610 East Fifth Street Vancouver WA 98661-3801		CODE N/A	7. ADMINISTERED BY (If other than Item 6) CODE N/A	
8. NAME AND ADDRESS OF CONTRACTOR (No., street, county, State and Zip Code)			X	9A. AMENDMENT OF SOLICITATION NO. 69056726B000001
CODE: N/A				FACILITY CODE: N/A
				10A. MODIFICATION OF CONTRACT/ORDER NO. N/A
				10B. DATED (SEE ITEM 13) N/A

**11. THIS ITEM ONLY APPLIES TO AMENDMENTS OF SOLICITATIONS**

The above numbered solicitation is amended as set forth in Item 14. The hour and date specified for receipt of Offers ( ) is extended, (  ) is not extended.  
Offers must acknowledge receipt of this amendment prior to the hour and date specified in the solicitation or as amended, by one of the following methods:  
(a) By completing Items 8 and 15, and returning 1 copies of the amendment; (b) By acknowledging receipt of this amendment on each copy of the offer submitted; or (c) By separate letter or telegram which includes a reference to the solicitation and amendment numbers. **FAILURE OF YOUR ACKNOWLEDGMENT TO BE RECEIVED AT THE PLACE DESIGNATED FOR THE RECEIPT OF OFFERS PRIOR TO THE HOUR AND DATE SPECIFIED MAY RESULT IN REJECTION OF YOUR OFFER.** If by virtue of this amendment you desire to change an offer already submitted, such change may be made by telegram or letter, provided each telegram or letter makes reference to the solicitation and this amendment, and is received prior to the opening hour and date specified.

12. ACCOUNTING AND APPROPRIATION DATA (If required)  
N/A

**13. THIS ITEM APPLIES ONLY TO MODIFICATIONS OF CONTRACTS/ORDERS, IT MODIFIES THE CONTRACT/ORDER NO. AS DESCRIBED IN ITEM 14.**

A	THIS CHANGE ORDER IS ISSUED PURSUANT TO (Specify authority) THE CHANGES SET FORTH IN ITEM 14 ARE MADE IN THE CONTRACT ORDER NO. IN ITEM 10A. N/A
B	THE ABOVE NUMBERED CONTRACT/ORDER IS MODIFIED TO REFLECT THE ADMINISTRATIVE CHANGES (Such as changes in paying office, appropriation date, etc.) SET FORTH IN ITEM 14, PURSUANT TO THE AUTHORITY OF FAR 43.103(b). N/A
C	THIS SUPPLEMENTAL AGREEMENT IS ENTERED INTO PURSUANT TO AUTHORITY OF: N/A
D	OTHER (Specify type of modification and authority) N/A

**E. IMPORTANT: Contractor n/a is not, n/a is required to sign this document and return n/a copies to the issuing office.**

14. DESCRIPTION OF AMENDMENT/MODIFICATION (Organized by UCF section headings, including solicitation/contract subject matter where feasible.)  
WA NP MORA 11(1), Fryingpan Creek Bridge  
  
See page 2

15a. NAME AND TITLE OF SIGNER (Type or print)		15a. NAME AND TITLE OF CONTRACTING OFFICER (Type or print)	
		N/A	
15B. CONTRACTOR/OFFEROR	15C. DATE SIGNED	16B. UNITED STATES OF AMERICA	16C. DATE SIGNED
BY _____ (Signature of person authorized to sign)		BY <u>N/A</u> _____ (Signature of Contracting Officer)	N/A

**REVISIONS ARE AS FOLLOWS:**

**BID SCHEDULE**

Page A-7 through A-18. Deleted and replaced entirely.

**SPECIAL CONTRACT REQUIREMENTS**

Page E-4, Subsection 102.02A (d) Design data. Updates attachment title.

Page F-5, Subsection 203.04 Removing Material. Revises language.

Page F-62, Subsections 615.03 General and 615.04 (c) Artwork Tiles. Adds language.

**PHYSICAL DATA (Added to Physical Data WA NP MORA 11(1) A003.zip and uploaded to SAM attachments)**

mora11-1\_Earthwork\_Main 01.pdf. Deleted and replaced entirely with A003 mora11-1\_Earthwork\_Main 01.pdf .

mora11-1\_XS\_MAIN 01.pdf. Deleted and replaced entirely with A003 mora11-1\_XS\_MAIN 01.pdf.

**PLANS**

Plan sheet #A.2. Adds additional information to Sheet Index.

Plan sheet #B.1 through B.6. Updates the Summary of Quantities.

Plan sheet #D.2. Updates Table.

Plan sheet #D.3. Updates Table.

Plan sheet #D.6. Adds additional information.

Plan sheet #E.6. Adds additional information.

Plan sheet #H.1. Adds additional information.

Plan sheet #H.1A. Adds page to plans set.

Plan sheet #S.21. through S.23 Adds additional information.

## ENCLOSURES

### Pages:

A-7 through A-18  
E-4  
F-5  
F-62

### Plan Sheets:

A.2  
B.1 through B.6  
D.2 through D.3  
D.6  
E.6  
H.1 through H.1A  
S.21 through S.23

## BID SCHEDULE

Bidder/Offeror please note: Before preparing the bid, carefully read the Solicitation Provisions. Insert a unit bid price, in figures, for each pay item for which a quantity appears in the bid schedule. Unit bid prices should be quoted no more precisely than the nearest cent (2 decimal places). Unit bid prices quoted more precisely will be rounded up to the nearest cent by the Government. Multiply the unit price by the quantity for each pay item and show the amount bid. Should any mathematical check made by the Government show a mistake in the amount bid, the corrected unit price extension shall govern. When the word "LPSM" (Lump Sum) appears as a unit bid price, insert an amount for each lump sum pay item. When a sum based on a fixed rate appears for any pay item in the amount bid column, include the Government inserted amount bid for the item in the total bid amount. Total all of the amounts bid for each pay item and show the total bid amount.

# BID SCHEDULE

**Project No :** WA NP MORA 11(1)  
**Project Name :** Fryingpan Creek Bridge

**Schedule :** A  
**Schedule Type :** Base

Contract Quantity Pay Items	
20801-0000	STRUCTURE EXCAVATION
55201-0200	STRUCTURAL CONCRETE, CLASS A (AE)
55201-0800	STRUCTURAL CONCRETE, CLASS D (AE)
55203-2000	STRUCTURAL CONCRETE, CLASS D (AE), FOR APPROACH SLABS, TYPE 2
55235-0000	EXPANSION JOINTS
55401-1000	REINFORCING STEEL
55401-2000	REINFORCING STEEL, EPOXY COATED
55502-0000	STRUCTURAL STEEL, FURNISHED, FABRICATED, AND ERECTED
55601-0900	BRIDGE RAILING, STEEL (YELLOWSTONE PICKET RAIL)
56401-1000	BEARING DEVICE, ELASTOMERIC
56501-0600	DRILLED SHAFT, 48-INCH DIAMETER
60901-2900	CURB, STONE, TYPE 1, 6-INCH DEPTH
62001-1000	CLASS B MASONRY, ROCK FACE FINISH

AMD#	Line Item Number	Pay Item Number	Description	Supplemental Description	Quantity	Unit	Unit Price	Amount
	A0100	15101-0000	MOBILIZATION		ALL	LPSM		
	A0120	15201-0000	CONSTRUCTION SURVEY AND STAKING		ALL	LPSM		
	A0140	15301-0000	CONTRACTOR QUALITY CONTROL		ALL	LPSM		
	A0160	15401-0000	CONTRACTOR TESTING		ALL	LPSM		
	A0180	15501-0000	CONSTRUCTION SCHEDULE		ALL	LPSM		
	A0200	15702-6000	SOIL EROSION CONTROL, TEMPORARY STREAM DIVERSION		ALL	LPSM		
	A0220	15703-2500	SOIL EROSION CONTROL, MULCHING, HYDRAULIC METHOD		0.500	ACRE		
	A0240	15705-0100	SOIL EROSION CONTROL, SILT FENCE		830.000	LNFT		
	A0260	15705-1400	SOIL EROSION CONTROL, FIBER ROLL		200.000	LNFT		
	A0280	15706-0200	SOIL EROSION CONTROL, CHECK DAM	(FIBER ROLL)	70.000	EACH		
	A0300	15706-1100	SOIL EROSION CONTROL, INLET PROTECTION TYPE A		4.000	EACH		
	A0320	15706-1600	SOIL EROSION CONTROL, STABILIZED CONSTRUCTION EXIT		3.000	EACH		
	A0340	15706-2300	SOIL EROSION CONTROL, ON-SITE CONCRETE WASHOUT STRUCTURE		3.000	EACH		

	A0360	15802-0000	WATERING FOR DUST CONTROL		ALL	LPSM		
	A0380	20101-0000	CLEARING AND GRUBBING		2.300	ACRE		
	A0400	20301-2400	REMOVAL OF SIGN		7.000	EACH		
	A0420	20303-3500	REMOVAL OF STONE MASONRY	(AND SALVAGE)	20.000	SQYD		
	A0440	20304-2000	REMOVAL OF BRIDGE		ALL	LPSM		
A003	A0460	20401-0000	ROADWAY EXCAVATION		18,000.000	CUYD		
	A0480	20465-0000	CONSERVE AND PLACE BOULDER	(EXCAVATED)	30.000	EACH		
	A0500	20465-0000	CONSERVE AND PLACE BOULDER	(SURFACE)	52.000	EACH		
	A0520	20701-0100	SEPARATION-STABILIZATION GEOTEXTILE, CLASS 1, TYPE A		200.000	SQYD		
	A0540	20701-0800	SEPARATION-STABILIZATION GEOTEXTILE, CLASS 2, TYPE C		900.000	SQYD		
	A0560	20801-0000	STRUCTURE EXCAVATION		670.000	CUYD		
	A0580	20810-0000	SHORING AND BRACING		ALL	LPSM		
A003	A0600	21101-1000	ROADWAY OBLITERATION, METHOD 1		300.000	SQYD		
	A0620	25101-0200	PLACED RIPRAP, METHOD A, CLASS 2		50.000	CUYD		
	A0640	25101-0500	PLACED RIPRAP, METHOD A, CLASS 5		900.000	CUYD		
A003	A0660	25501-0000	MECHANICALLY STABILIZED EARTH WALL		4,600.000	SQFT		
	A0680	25701-0200	CONTRACTOR FURNISHED MECHANICALLY STABILIZED EARTH WALL DESIGN		ALL	LPSM		
	A0700	30201-2000	ROADWAY AGGREGATE, METHOD 2		1,300.000	CUYD		
	A0720	30302-1000	DITCH RECONDITIONING		650.000	LNFT		
	A0740	40301-0100	ASPHALT CONCRETE PAVEMENT, TYPE 1		1,100.000	TON		
	A0760	40303-0100	ASPHALT CONCRETE PAVEMENT, TYPE 1, WEDGE AND LEVELING COURSE		100.000	TON		
	A0780	41201-0000	TACK COAT		2.000	TON		
	A0800	41301-0000	ASPHALT PAVEMENT MILLING	(VARIABLE UP TO 4-INCH DEPTH)	1,400.000	SQYD		
	A0820	55201-0200	STRUCTURAL CONCRETE, CLASS A (AE)		215.000	CUYD		
	A0840	55201-0800	STRUCTURAL CONCRETE, CLASS D (AE)		312.000	CUYD		
	A0860	55203-2000	STRUCTURAL CONCRETE, CLASS D (AE), FOR APPROACH SLABS, TYPE 2		39.000	CUYD		
	A0880	55235-0000	EXPANSION JOINTS		60.000	LNFT		
	A0900	55401-1000	REINFORCING STEEL		25,000.000	LB		

	A0920	55401-2000	REINFORCING STEEL, EPOXY COATED		84,500.000	LB		
	A0940	55502-0000	STRUCTURAL STEEL, FURNISHED, FABRICATED, AND ERECTED		591,000.000	LB		
	A0960	55601-0900	BRIDGE RAILING, STEEL (YELLOWSTONE PICKET RAIL)	(YELLOWSTONE PICKET RAIL)	413.000	LNFT		
	A0980	56401-1000	BEARING DEVICE, ELASTOMERIC		8.000	EACH		
	A1000	56501-0600	DRILLED SHAFT, 48- INCH DIAMETER		417.000	LNFT		
	A1020	57502-0000	TEMPORARY BRIDGE	(WORK BRIDGE)	ALL	LPSM		
	A1040	60201-0400	12-INCH PIPE CULVERT		25.000	LNFT		
	A1060	60201-0600	18-INCH PIPE CULVERT		30.000	LNFT		
	A1080	60201-0800	24-INCH PIPE CULVERT		270.000	LNFT		
	A1100	60210-0600	END SECTION FOR 18- INCH PIPE CULVERT	(CONCRETE)	1.000	EACH		
	A1120	60210-0800	END SECTION FOR 24- INCH PIPE CULVERT	(CONCRETE)	6.000	EACH		
	A1140	60212-0600	ELBOW, 18-INCH		1.000	EACH		
	A1160	60404-1000	CATCH BASIN, FLH TYPE 1	(METAL FRAME AND GRATE TYPE A)	2.000	EACH		
	A1180	60901-2900	CURB, STONE, TYPE 1, 6-INCH DEPTH		219.000	LNFT		
	A1200	60901-3500	CURB, STONE, TYPE 1, 12-INCH DEPTH		750.000	LNFT		
A003	A1220	61301-0000	SIMULATED STONE MASONRY SURFACE TREATMENT		240.000	SQYD		
	A1240	61302-0000	SIMULATED STONE MASONRY TEST WALL		1.000	EACH		
	A1260	61501-0100	SIDEWALK, CONCRETE		300.000	SQYD		
	A1280	61504-1000	ACCESSIBILITY RAMP, CONCRETE		20.000	SQYD		
	A1300	61509-0000	DETECTABLE WARNING PANELS		3.000	SQYD		
	A1320	62001-1000	CLASS B MASONRY, ROCK FACE FINISH		8.000	CUYD		
	A1340	62010-1000	STONE MASONRY GUARDWALL		190.000	LNFT		
	A1360	62010-1000	STONE MASONRY GUARDWALL	(CONCRETE CORE)	310.000	LNFT		
	A1380	62011-0500	STONE MASONRY HEADWALL FOR 24- INCH PIPE CULVERT		6.000	EACH		
	A1400	62201-0250	DUMP TRUCK, 10 CUBIC YARD MINIMUM CAPACITY		124.000	HOUR		
	A1420	62201-0600	BACKHOE LOADER, 8 CUBIC FOOT MINIMUM RATED CAPACITY BUCKET, 30-INCH WIDTH		100.000	HOUR		
	A1440	62201-0950	WHEEL LOADER, 3 CUBIC YARD MINIMUM RATED CAPACITY		24.000	HOUR		

A1460	62201-3150	HYDRAULIC EXCAVATOR, CRAWLER MOUNTED, 1.0 CUBIC YARD MINIMUM CAPACITY WITH THUMB ATTACHMENT		100.000	HOUR		
A1480	62301-0000	GENERAL LABOR		100.000	HOUR		
A1500	62302-1000	SPECIAL LABOR, HIRED TECHNICAL SERVICES	(FISH BIOLOGIST)	100.000	HOUR		
A1520	62405-0300	PLACING CONSERVED TOPSOIL, 4-INCH DEPTH		7,400.000	SQYD		
A1540	62502-0000	TURF ESTABLISHMENT		12,500.000	SQYD		
A1560	62901-1000	ROLLED EROSION CONTROL PRODUCT, TYPE 3.B		5,400.000	SQYD		
A1580	63302-0000	SIGN SYSTEM		40.000	SQFT		
A1600	63316-1000	REMOVE AND RESET SIGN		5.000	EACH		
A1620	63318-1000	SNOW POLE HOLDER		14.000	EACH		
A1640	63401-0300	PAVEMENT MARKINGS, TYPE B, SOLID	(WHITE)	9,700.000	LNFT		
A1660	63401-0300	PAVEMENT MARKINGS, TYPE B, SOLID	(YELLOW)	5,100.000	LNFT		
A1680	63401-0400	PAVEMENT MARKINGS, TYPE B, BROKEN		270.000	LNFT		
A1700	63403-0900	PAVEMENT MARKINGS, TYPE I		150.000	SQFT		
A1720	63405-0850	PAVEMENT MARKINGS, TYPE B, ACCESSIBILITY SYMBOL		2.000	EACH		
A1740	63502-0600	TEMPORARY TRAFFIC CONTROL, BARRICADE TYPE 3	(8 FEET WIDE)	10.000	EACH		
A1760	63502-0900	TEMPORARY TRAFFIC CONTROL, CONE, TYPE 28-INCH		60.000	EACH		
A1780	63502-1250	TEMPORARY TRAFFIC CONTROL, TUBULAR MARKER, TYPE 42-INCH		12.000	EACH		
A1800	63502-1300	TEMPORARY TRAFFIC CONTROL, DRUM		100.000	EACH		
A1820	63502-1500	TEMPORARY TRAFFIC CONTROL, WARNING LIGHT TYPE A		12.000	EACH		
A1840	63502-1600	TEMPORARY TRAFFIC CONTROL, WARNING LIGHT TYPE B		10.000	EACH		
A1860	63502-1700	TEMPORARY TRAFFIC CONTROL, WARNING LIGHT TYPE C		100.000	EACH		
A1880	63502-2000	TEMPORARY TRAFFIC CONTROL, PORTABLE CHANGEABLE MESSAGE SIGN		3.000	EACH		
A1900	63502-3100	TEMPORARY TRAFFIC CONTROL, TRAFFIC SIGNAL SYSTEM		1.000	EACH		

	A1920	63503-0700	TEMPORARY TRAFFIC CONTROL, PAVEMENT MARKINGS		60.000	LNFT		
	A1940	63503-1000	TEMPORARY TRAFFIC CONTROL, PLASTIC FENCE	(ORANGE, PERIMETER)	2,100.000	LNFT		
	A1960	63504-1000	TEMPORARY TRAFFIC CONTROL, CONSTRUCTION SIGN		710.000	SQFT		
	A1980	63506-0500	TEMPORARY TRAFFIC CONTROL, FLAGGER		2,500.000	HOUR		
	A2000	63507-0700	TEMPORARY TRAFFIC CONTROL, TRAFFIC CONTROL SUPERVISOR		550.000	DAY		
	A2020	63610-0000	CONDUIT	(8-INCH HDPE)	330.000	LNFT		
	A2040	63621-1000	UTILITY BOX, PULLBOX		4.000	EACH		
	A2060	63701-0000	FIELD OFFICE		37.000	EACH		
	A2080	64603-0500	FIXTURE, BICYCLE STORAGE RACK		3.000	EACH		
	A2100	64604-3000	FIXTURE, PEDESTRIAN RAILING	(STONE-TIMBER)	300.000	LNFT		
	A2120	64703-1000	MITIGATION, LANDSCAPING LOG		63.000	EACH		
	A2140	64703-8000	MITIGATION, BANK STABILIZATION	(DEFLECTOR LOG STRUCTURE)	1.000	EACH		
	A2160	64707-1000	MITIGATION, ARCHAEOLOGICAL SITE MONITORING		100.000	HOUR		

Submitted By:

Schedule Total:

# BID SCHEDULE

**Project No :** WA NP MORA 11(1)  
**Project Name :** Fryingpan Creek Bridge

**Schedule :** B  
**Schedule Type :** Base

Contract Quantity Pay Items	
20801-0000	STRUCTURE EXCAVATION
55201-0200	STRUCTURAL CONCRETE, CLASS A (AE)
55201-0800	STRUCTURAL CONCRETE, CLASS D (AE)
55203-2000	STRUCTURAL CONCRETE, CLASS D (AE), FOR APPROACH SLABS, TYPE 2
55235-0000	EXPANSION JOINTS
55401-1000	REINFORCING STEEL
55401-2000	REINFORCING STEEL, EPOXY COATED
55502-0000	STRUCTURAL STEEL, FURNISHED, FABRICATED, AND ERECTED
55601-0900	BRIDGE RAILING, STEEL (YELLOWSTONE PICKET RAIL)
56401-1000	BEARING DEVICE, ELASTOMERIC
56501-0600	DRILLED SHAFT, 48-INCH DIAMETER
60901-2900	CURB, STONE, TYPE 1, 6-INCH DEPTH (STONE CURB AT BRIDGE)
62001-1000	CLASS B MASONRY, ROCK FACE FINISH

AMD#	Line Item Number	Pay Item Number	Description	Supplemental Description	Quantity	Unit	Unit Price	Amount
	B0100	15101-0000	MOBILIZATION		ALL	LPSM		
	B0120	15201-0000	CONSTRUCTION SURVEY AND STAKING		ALL	LPSM		
	B0140	15301-0000	CONTRACTOR QUALITY CONTROL		ALL	LPSM		
	B0160	15401-0000	CONTRACTOR TESTING		ALL	LPSM		
	B0180	15501-0000	CONSTRUCTION SCHEDULE		ALL	LPSM		
	B0200	15702-6000	SOIL EROSION CONTROL, TEMPORARY STREAM DIVERSION		ALL	LPSM		
	B0220	15703-2500	SOIL EROSION CONTROL, MULCHING, HYDRAULIC METHOD		0.500	ACRE		
	B0240	15705-0100	SOIL EROSION CONTROL, SILT FENCE		830.000	LNFT		
	B0260	15705-1400	SOIL EROSION CONTROL, FIBER ROLL		200.000	LNFT		
	B0280	15706-0200	SOIL EROSION CONTROL, CHECK DAM	(FIBER ROLL)	70.000	EACH		
	B0300	15706-1100	SOIL EROSION CONTROL, INLET PROTECTION TYPE A		4.000	EACH		
	B0320	15706-1600	SOIL EROSION CONTROL, STABILIZED CONSTRUCTION EXIT		3.000	EACH		
	B0340	15706-2300	SOIL EROSION CONTROL, ON-SITE CONCRETE WASHOUT STRUCTURE		3.000	EACH		

	B0360	15802-0000	WATERING FOR DUST CONTROL		ALL	LPSM		
	B0380	20101-0000	CLEARING AND GRUBBING		2.300	ACRE		
	B0400	20301-2400	REMOVAL OF SIGN		7.000	EACH		
	B0420	20303-3500	REMOVAL OF STONE MASONRY	(AND SALVAGE)	20.000	SQYD		
	B0440	20304-2000	REMOVAL OF BRIDGE		ALL	LPSM		
A003	B0460	20401-0000	ROADWAY EXCAVATION		18,000.000	CUYD		
	B0480	20465-0000	CONSERVE AND PLACE BOULDER	(EXCAVATED)	30.000	EACH		
	B0500	20465-0000	CONSERVE AND PLACE BOULDER	(SURFACE)	52.000	EACH		
	B0520	20701-0100	SEPARATION-STABILIZATION GEOTEXTILE, CLASS 1, TYPE A		200.000	SQYD		
	B0540	20701-0800	SEPARATION-STABILIZATION GEOTEXTILE, CLASS 2, TYPE C		900.000	SQYD		
	B0560	20801-0000	STRUCTURE EXCAVATION		720.000	CUYD		
	B0580	20810-0000	SHORING AND BRACING		ALL	LPSM		
A003	B0600	21101-1000	ROADWAY OBLITERATION, METHOD 1		300.000	SQYD		
	B0620	25101-0200	PLACED RIPRAP, METHOD A, CLASS 2		50.000	CUYD		
	B0640	25101-0500	PLACED RIPRAP, METHOD A, CLASS 5		900.000	CUYD		
A003	B0660	25501-0000	MECHANICALLY STABILIZED EARTH WALL		4,600.000	SQFT		
	B0680	25701-0200	CONTRACTOR FURNISHED MECHANICALLY STABILIZED EARTH WALL DESIGN		ALL	LPSM		
	B0700	30201-2000	ROADWAY AGGREGATE, METHOD 2		1,300.000	CUYD		
	B0720	30302-1000	DITCH RECONDITIONING		650.000	LNFT		
	B0740	40301-0100	ASPHALT CONCRETE PAVEMENT, TYPE 1		1,100.000	TON		
	B0760	40303-0100	ASPHALT CONCRETE PAVEMENT, TYPE 1, WEDGE AND LEVELING COURSE		100.000	TON		
	B0780	41201-0000	TACK COAT		2.000	TON		
	B0800	41301-0000	ASPHALT PAVEMENT MILLING	(VARIABLE UP TO 4-INCH DEPTH)	1,400.000	SQYD		
	B0820	55201-0200	STRUCTURAL CONCRETE, CLASS A (AE)		216.000	CUYD		
	B0840	55201-0800	STRUCTURAL CONCRETE, CLASS D (AE)		312.000	CUYD		
	B0860	55203-2000	STRUCTURAL CONCRETE, CLASS D (AE), FOR APPROACH SLABS, TYPE 2		39.000	CUYD		
	B0880	55235-0000	EXPANSION JOINTS		60.000	LNFT		
	B0900	55401-1000	REINFORCING STEEL		27,000.000	LB		

	B0920	55401-2000	REINFORCING STEEL, EPOXY COATED		84,500.000	LB		
	B0940	55502-0000	STRUCTURAL STEEL, FURNISHED, FABRICATED, AND ERECTED		591,000.000	LB		
	B0960	55601-0900	BRIDGE RAILING, STEEL (YELLOWSTONE PICKET RAIL)	(YELLOWSTONE PICKET RAIL)	413.000	LNFT		
	B0980	56401-1000	BEARING DEVICE, ELASTOMERIC		8.000	EACH		
	B1000	56501-0600	DRILLED SHAFT, 48-INCH DIAMETER		417.000	LNFT		
	B1020	57502-0000	TEMPORARY BRIDGE	(WORK BRIDGE)	ALL	LPSM		
	B1040	60201-0400	12-INCH PIPE CULVERT		25.000	LNFT		
	B1060	60201-0600	18-INCH PIPE CULVERT		30.000	LNFT		
	B1080	60201-0800	24-INCH PIPE CULVERT		270.000	LNFT		
	B1100	60210-0600	END SECTION FOR 18-INCH PIPE CULVERT	(CONCRETE)	1.000	EACH		
	B1120	60210-0800	END SECTION FOR 24-INCH PIPE CULVERT	(CONCRETE)	6.000	EACH		
	B1140	60212-0600	ELBOW, 18-INCH		1.000	EACH		
	B1160	60404-1000	CATCH BASIN, FLH TYPE 1	(METAL FRAME AND GRATE TYPE A)	2.000	EACH		
	B1180	60901-2900	CURB, STONE, TYPE 1, 6-INCH DEPTH (STONE CURB AT BRIDGE)	(STONE CURB AT BRIDGE)	219.000	LNFT		
	B1200	60901-3500	CURB, STONE, TYPE 1, 12-INCH DEPTH		750.000	LNFT		
	B1220	61501-0100	SIDEWALK, CONCRETE		300.000	SQYD		
	B1240	61504-1000	ACCESSIBILITY RAMP, CONCRETE		20.000	SQYD		
	B1260	61509-0000	DETECTABLE WARNING PANELS		3.000	SQYD		
	B1280	62001-1000	CLASS B MASONRY, ROCK FACE FINISH		52.000	CUYD		
A003	B1300	62001-1000	CLASS B MASONRY, ROCK FACE FINISH	(MSE WALL)	40.000	CUYD		
	B1320	62010-1000	STONE MASONRY GUARDWALL		190.000	LNFT		
	B1340	62010-1000	STONE MASONRY GUARDWALL	(CONCRETE CORE)	310.000	LNFT		
	B1360	62011-0500	STONE MASONRY HEADWALL FOR 24-INCH PIPE CULVERT		6.000	EACH		
	B1380	62201-0250	DUMP TRUCK, 10 CUBIC YARD MINIMUM CAPACITY		124.000	HOUR		
	B1400	62201-0600	BACKHOE LOADER, 8 CUBIC FOOT MINIMUM RATED CAPACITY BUCKET, 30-INCH WIDTH		100.000	HOUR		
	B1420	62201-0950	WHEEL LOADER, 3 CUBIC YARD MINIMUM RATED CAPACITY		24.000	HOUR		
	B1440	62201-3150	HYDRAULIC EXCAVATOR, CRAWLER MOUNTED, 1.0 CUBIC YARD MINIMUM CAPACITY WITH THUMB ATTACHMENT		100.000	HOUR		

	B1460	62301-0000	GENERAL LABOR		100.000	HOUR		
	B1480	62302-1000	SPECIAL LABOR, HIRED TECHNICAL SERVICES	(FISH BIOLOGIST)	100.000	HOUR		
	B1500	62405-0300	PLACING CONSERVED TOPSOIL, 4-INCH DEPTH		7,400.000	SQYD		
	B1520	62502-0000	TURF ESTABLISHMENT		12,500.000	SQYD		
	B1540	62901-1000	ROLLED EROSION CONTROL PRODUCT, TYPE 3.B		5,400.000	SQYD		
	B1560	63302-0000	SIGN SYSTEM		40.000	SQFT		
	B1580	63316-1000	REMOVE AND RESET SIGN		5.000	EACH		
	B1600	63318-1000	SNOW POLE HOLDER		14.000	EACH		
	B1620	63401-0300	PAVEMENT MARKINGS, TYPE B, SOLID	(WHITE)	9,700.000	LNFT		
	B1640	63401-0300	PAVEMENT MARKINGS, TYPE B, SOLID	(YELLOW)	5,100.000	LNFT		
	B1660	63401-0400	PAVEMENT MARKINGS, TYPE B, BROKEN		270.000	LNFT		
	B1680	63403-0900	PAVEMENT MARKINGS, TYPE I		150.000	SQFT		
	B1700	63405-0850	PAVEMENT MARKINGS, TYPE B, ACCESSIBILITY SYMBOL		2.000	EACH		
	B1720	63502-0600	TEMPORARY TRAFFIC CONTROL, BARRICADE TYPE 3	(8 FEET WIDE)	10.000	EACH		
	B1740	63502-0900	TEMPORARY TRAFFIC CONTROL, CONE, TYPE 28-INCH		60.000	EACH		
	B1760	63502-1250	TEMPORARY TRAFFIC CONTROL, TUBULAR MARKER, TYPE 42- INCH		12.000	EACH		
	B1780	63502-1300	TEMPORARY TRAFFIC CONTROL, DRUM		100.000	EACH		
	B1800	63502-1500	TEMPORARY TRAFFIC CONTROL, WARNING LIGHT TYPE A		12.000	EACH		
	B1820	63502-1600	TEMPORARY TRAFFIC CONTROL, WARNING LIGHT TYPE B		10.000	EACH		
	B1840	63502-1700	TEMPORARY TRAFFIC CONTROL, WARNING LIGHT TYPE C		100.000	EACH		
	B1860	63502-2000	TEMPORARY TRAFFIC CONTROL, PORTABLE CHANGEABLE MESSAGE SIGN		3.000	EACH		
	B1880	63502-3100	TEMPORARY TRAFFIC CONTROL, TRAFFIC SIGNAL SYSTEM		1.000	EACH		
	B1900	63503-0700	TEMPORARY TRAFFIC CONTROL, PAVEMENT MARKINGS		60.000	LNFT		
	B1920	63503-1000	TEMPORARY TRAFFIC CONTROL, PLASTIC FENCE	(ORANGE, PERIMETER)	2,100.000	LNFT		
	B1940	63504-1000	TEMPORARY TRAFFIC CONTROL, CONSTRUCTION SIGN		710.000	SQFT		

	B1960	63506-0500	TEMPORARY TRAFFIC CONTROL, FLAGGER		2,500.000	HOUR		
	B1980	63507-0700	TEMPORARY TRAFFIC CONTROL, TRAFFIC CONTROL SUPERVISOR		550.000	DAY		
	B2000	63610-0000	CONDUIT	(8-INCH HDPE)	330.000	LNFT		
	B2020	63621-1000	UTILITY BOX, PULLBOX		4.000	EACH		
	B2040	63701-0000	FIELD OFFICE		37.000	EACH		
	B2060	64603-0500	FIXTURE, BICYCLE STORAGE RACK		3.000	EACH		
	B2080	64604-3000	FIXTURE, PEDESTRIAN RAILING	(STONE-TIMBER)	300.000	LNFT		
	B2100	64703-1000	MITIGATION, LANDSCAPING LOG		63.000	EACH		
	B2120	64703-8000	MITIGATION, BANK STABILIZATION	(DEFLECTOR LOG STRUCTURE)	1.000	EACH		
	B2140	64707-1000	MITIGATION, ARCHAEOLOGICAL SITE MONITORING		100.000	HOUR		

Submitted By:

Schedule Total:

# BID SCHEDULE SUMMARY

Schedule	Bid Total
Schedule A - Base	\$0.00

Schedule	Bid Total
Schedule B - Base	\$0.00

Total-Schedule(s) and Option(s)	Bid Total
Schedule A, Schedule B	\$0.00

(a) mora11-1\_BRIDGE Existing Fryingpan Creek Bridge As-built.pdf

(3) FLH Bridge Oversized/Overweight Permit Load Request Form in Portable Document Format (.pdf) format;

(a) mora11-1\_BRIDGE\_FLH OSOW vehicle permit request form.pdf

**(c) Geotechnical data.**

(1) Geotechnical report in Portable Document Format (.pdf) format;

(a) mora11-1\_GEO\_GR0525.pdf

**(d) Design data.**

(1) Proposed horizontal alignment(s) and profile grade(s) in Portable Document Format (.pdf) and LandXML (.xml) formats;

(a) mora11-1\_proposed-alignment\_MAIN 01.pdf; and

(b) mora11-1\_proposed-alignment\_MAIN 01.xml

(2) Cross Sections in Portable Document Format (.pdf);

(a) [A003 mora11-1\\_XS\\_MAIN 01.pdf](#); and

(b) mora11-1\_XS\_culverts\_MAIN.pdf

(3) Earthwork volume report in Portable Document Format (.pdf);

(a) [A003 mora11-1\\_Earthwork\\_MAIN 01.pdf](#); and

(b) mora11-1\_Earthwork\_West Parking Lot.pdf

(4) Clearing limits (based on theoretical catch points) in Portable Document Format (.pdf) and Microsoft Excel (.xlsx) format;

(a) mora11-1\_clearing-limit\_MAIN 01.pdf; and

(b) mora11-1\_clearing-limit\_MAIN 01.xlsx

(5) Construction staking notes containing points at centerline, shoulders, and theoretical slope stake catch in Portable Document Format (.pdf) and Microsoft Excel (.xlsx) format;

(a) mora11-1\_construction-staking-notes\_MAIN 01.pdf; and

(b) mora11-1\_construction-staking-notes\_MAIN 01.xlsx

(6) X, Y, Z coordinates of subgrade, intermediate and final layer(s) points at centerline and shoulders, in Portable Document Format (.pdf) and Microsoft Excel (.xlsx) format;

(a) mora11-1\_XYZ\_base\_MAIN 01.pdf;

salvaged. Prevent chipping and breaking of stone during removal, transporting and stockpiling. Remove and clean all dirt and mortar from each salvaged stone.

Use hand tools to disassemble stone masonry unless otherwise approved. Salvage all sound and undamaged stones from stone masonry structures.

**(d) Stockpiling.** Stockpile conserved stone masonry adjacent to the removal site. When not feasible, organize and stack removed stones on pallets and stockpile in locations as directed. Do not mix removed stones from different sections on the same pallet. Label each pallet by station.

Stones removed from a site that are to be reset at the same site may be stockpiled in a suitable location at the site area, but are to remain separated from other stone material. Number stones that are to be reset in the same location on the bottom with a weatherproof marker. Correlate the stones' numbers with photographs.

**(e) Excess material.** Haul excess salvaged stone material not incorporated into the new work to the designated site according to Subsection 105.04(b)(2).

**203.04 Removing Material.** Add the following to Subsection (a):

**(4)** Drawings and calculations that fully illustrate all anticipated phases of the proposed method of removal. Show the removal sequence, crane and barge locations, crane capacities, lifting point locations, and bridge member masses. Provide sufficient detail to allow a structural and safety review of the proposed removal methods. Provide catalog or equivalent data indicating a manufactured device's recommended safe load capacity.

Add the following to Subsection (b):

~~All work to remove the existing Fryingpan Creek Bridge is to be completed from above the ordinary high water mark. Only hand powered tools and work crews are allowed below the ordinary high water mark to assist in removal of the existing substructure and temporary works. Where removal of the existing Fryingpan Creek Bridge requires work below ordinary high water, perform work during the in-water work period according to Subsection 107.10 and within the area isolated by temporary diversion according to Subsection 157.10.~~

Completely remove all concrete and steel for existing bridge superstructures. Remove existing bridge substructures to the full depth or a maximum of 5 feet below existing ground as shown on the plans. Backfill with streambed material according to Section 647 to finish grade. Prevent construction debris from entering Fryingpan Creek.

The existing Fryingpan Creek Bridge may contain lead-based paint. Handle material with lead paint contamination according to Subsection 563.05 and remove material according to Subsection 203.05(d).

Extract temporary piles and bridge piles by pulling from above using a vibratory hammer or other approved methods to dislodge. Keep all equipment (such as buckets, steel cables,

## Section 615. — SIDEWALKS, PADS, AND PAVED MEDIANS

### Description

#### 615.01 Add the following:

This work also includes installation of government-provided artwork tiles as part of the parking lot sidewalk.

### Material

#### 615.02 Add the following:

Detectable warning panel	725.19
Flexible cellular joint filler	712.01(a)(5)
Joint sealant, hot-applied	712.01(a)(1)
Joint sealant, silicone	712.01(d)

### Construction Requirements

#### 615.03 **General.** Add the following:

Construct ramp transitions between sidewalks, curbs, and roads, and transitions between artwork tiles and sidewalks that are flush and free of abrupt vertical changes not to exceed 0.25 inch.

#### 615.04 **Concrete Sidewalks, Pads, and Medians.** Delete Subsection (b)(1) and substitute the following:

**(1) Sidewalk and ramp finish.** See Subsection 552.14(c)(2).

#### Add the following:

**(c) Artwork tiles.** Furnish 12-inch by 12-inch by 3.5-inch concrete blocks according to Subsection 725.09(c) and mount artwork tiles to the concrete blocks according to the government-provided tile manufacturer's recommendation. Lay artwork tiles to grade on a prepared surface and install them to coincide with sidewalk joint lines and at locations as shown on the plans.

Chock the joints flush with a dry mixture of 4 parts sand and 1 part cement by mass and carefully water the surface to saturate the joint filler.

#### 615.07 **Acceptance.** Add the following:

Installation of artwork tiles will be evaluated under Subsection 106.02.

PROJECT	SHEET NUMBER
WA NP MORA 11(1)	A.2

**SHEET INDEX**

**A. GENERAL INFORMATION**

- A.1 TITLE SHEET
- A.2 SHEET INDEX
- A.3 PLAN SYMBOLS AND ABBREVIATIONS
- A.4-5 VICINITY MAP
- A.6 STAGING SITE - FRYINGPAN CREEK BRIDGE
- A.7 STAGING AND STOCKPILING SITE - GRAVEL PULLOUT
- A.8 STOCKPILING SITE - OHANAPECOSH YARD
- A.9 STAGING AND STOCKPILING SITE - MCCULLOUGH SEED ORCHARD
- A.10 STAGING AND STOCKPILING SITE - CAYUSE PASS PULLOUT

**B. SUMMARY OF QUANTITIES**

- B.1-6 SUMMARY OF QUANTITIES

**C. TYPICAL SECTIONS**

- C.1-3 TYPICAL SECTIONS

**D. PLAN-PROFILE**

- D.1 SURVEY CONTROL
- D.2-3 TABULATION OF QUANTITIES
- D.4-7 PLAN-PROFILE
- D.8 SPECIAL DITCH GRADING
- D.9 STONE CURB AND ACCESSIBILITY RAMP
- D.10 SLOPE TREATMENT DETAILS

**E. PARKING**

- E.1 TABULATION OF QUANTITIES
- E.2 WEST PARKING LOT - LAYOUT
- E.3-4 WEST PARKING LOT - GRADING DETAILS
- E.5 EAST PARKING
- E.6 SIDEWALK ARTWORK TILE
- E.7 BICYCLE STORAGE RACK LAYOUT

**F. SOIL EROSION AND SEDIMENT CONTROL**

- F.1 TABULATION OF QUANTITIES
- F.2-5 SOIL EROSION AND SEDIMENT CONTROL
- F.6 SWPPP SIGN DETAIL
- F.7 ON-SITE CONCRETE WASHOUT STRUCTURE
- F.8-15 STANDARD AND DETAIL

**G. DRAINAGE**

- G.1 TABULATION OF DRAINAGE QUANTITIES
- G.2 BRIDGE WATERWAY PLAN
- G.3 BRIDGE WATERWAY DETAILS
- G.4 STONE MASONRY HEADWALL FOR PIPE CULVERT
- G.5-11 STANDARD AND DETAIL

**H. WALLS**

- H.1 MSE WALL PROFILE WEST ABUTMENT
- H.1A MSE WALL PROFILE EAST ABUTMENT
- H.2 MSE WALL TYPICAL SECTION SCHEDULE A
- H.3 MSE WALL TYPICAL SECTION SCHEDULE B
- H.4 MSE WALL MAT AND LIFT DETAILS SCHEDULE A
- H.5 MSE WALL MAT AND LIFT DETAILS SCHEDULE B
- H.6 CIP ANCHOR DETAILS SCHEDULE A

**SHEET INDEX (continued)**

**I. TEMPORARY TRAFFIC CONTROL**

- I.1 TABULATION OF QUANTITIES
- I.2 TEMPORARY TRAFFIC CONTROL SIGN LOCATION MAP
- I.3 TEMPORARY TRAFFIC CONTROL TRAIL CLOSURE
- I.4 TEMPORARY TRAFFIC CONTROL ADVANCE SIGNING
- I.5 TEMPORARY TRAFFIC CONTROL SINGLE LANE CLOSURE LAYOUT (WITH FLAGGERS)
- I.6 TEMPORARY TRAFFIC CONTROL SINGLE LANE CLOSURE LAYOUT (WITH SIGNALS)
- I.7 TEMPORARY TRAFFIC CONTROL ROAD CLOSURE LAYOUT
- I.8-9 STANDARD AND DETAIL

**J. PERMANENT TRAFFIC CONTROL**

- J.1 TABULATION OF QUANTITIES
- J.2-4 PERMANENT TRAFFIC CONTROL
- J.5 PERMANENT TRAFFIC CONTROL WEST PARKING LOT
- J.6 SNOW POLE HOLDER DETAIL
- J.7 PAVEMENT MARKINGS MISCELLANEOUS SYMBOLS
- J.8 SIGN STRUCTURES
- J.9 BREAKAWAY SIGN SUPPORT CORROSION RESISTANT STEEL
- J.10 SIGN BRACING
- J.11 STANDARD AND DETAIL

**K. STONE MASONRY**

- K.1 STONE MASONRY GUARDWALL (CONCRETE CORE)
- K.2 STONE MASONRY GUARDWALL
- K.3 PEDESTRIAN RAILING - STONE TIMBER
- K.4 STONE MASONRY PATTERN

**SHEET INDEX (continued)**

**S. BRIDGE**

- S.1 PLAN AND ELEVATION (SCHEDULE A)
- S.2 PLAN AND ELEVATION (SCHEDULE B)
- S.3 GENERAL NOTES
- S.4 FOUNDATION LAYOUT (SCHEDULE A)
- S.5 FOUNDATION LAYOUT (SCHEDULE B)
- S.6 DRILLED SHAFT DETAILS
- S.7 ABUTMENT BACKFILL
- S.8 ABUTMENT LAYOUT (SCHEDULE A)
- S.9 ABUTMENT LAYOUT (SCHEDULE B)
- S.10 ABUTMENT 1 DETAILS (SCHEDULE A)
- S.11 ABUTMENT 1 DETAILS (SCHEDULE B)
- S.12 ABUTMENT 2 DETAILS (SCHEDULE A)
- S.13 ABUTMENT 2 DETAILS (SCHEDULE B)
- S.14 ABUTMENT END WALLS
- S.15 WINGWALLS ABUTMENT - 1 (SCHEDULE A)
- S.16 WINGWALLS ABUTMENT - 1 (SCHEDULE B)
- S.17 WINGWALLS ABUTMENT - 2 (SCHEDULE A)
- S.18 WINGWALLS ABUTMENT - 2 (SCHEDULE B)
- S.19 BEARING DETAILS
- S.20 GIRDER LAYOUT
- S.21 STEEL GIRDER ELEVATION
- S.22-23 GIRDER DETAILS
- S.24-25 GIRDER FIELD SPLICES
- S.26 ABUTMENT CROSS FRAMES
- S.27 INTERMEDIATE CROSS FRAMES
- S.28 TYPICAL SECTION
- S.29 DECK PLAN
- S.30 APPROACH SLAB
- S.31 EXPANSION JOINT DETAILS
- S.32 RAILING LAYOUT
- S.33 RAILING DETAILS
- S.34 STONE MASONRY DETAILS - 1 (SCHEDULE A)
- S.35 STONE MASONRY DETAILS - 1 (SCHEDULE B)
- S.36 STONE MASONRY DETAILS - 2 (SCHEDULE A)
- S.37 STONE MASONRY DETAILS - 2 (SCHEDULE B)
- S.38-39 REINFORCING BAR LIST (SCHEDULE A)
- S.40 EPOXY COATED REINFORCING STEEL BAR LIST (SCHEDULE A)
- S.41-42 REINFORCING BAR LIST (SCHEDULE B)
- S.43 EPOXY COATED REINFORCING STEEL BAR LIST (SCHEDULE B)
- S.44-45 TYPICAL BAR BEND
- S.46 FRYINGPAN CREEK BRIDGE REMOVAL

△ Revised by Amendment A003

**SHEET INDEX**

# SUMMARY OF QUANTITIES - Schedule A

PROJECT	SHEET NUMBER
WA NP MORA 11(1)	B.1

A M E N D	LINE ITEM NO.	PAY ITEM NUMBER	PAY ITEM DESCRIPTION	UNIT	Sheet and Description						ALLOW- ANCE	Estimated Quantities	Remarks and/or Determination of Estimated Quantity	
					SECTION D	SECTION E	SECTION F	SECTION G	SECTION I	SECTION J		SECTION S		BID SCHEDULE
					PLAN- PROFILE	PARKING	SOIL EROSION AND SEDIMENT CONTROL	DRAINAGE	TEMPORARY TRAFFIC CONTROL	PERMANENT TRAFFIC CONTROL		BRIDGE		
	A0100	15101-0000	MOBILIZATION	LPSM								ALL		
	A0120	15201-0000	CONSTRUCTION SURVEY AND STAKING	LPSM								ALL		
	A0140	15301-0000	CONTRACTOR QUALITY CONTROL	LPSM								ALL		
	A0160	15401-0000	CONTRACTOR TESTING	LPSM								ALL		
	A0180	15501-0000	CONSTRUCTION SCHEDULE	LPSM								ALL		
	A0200	15702-6000	SOIL EROSION CONTROL, TEMPORARY STREAM DIVERSION	LPSM			ALL					ALL		
	A0220	15703-2500	SOIL EROSION CONTROL, MULCHING, HYDRAULIC METHOD	ACRE			0.5					0.5		
	A0240	15705-0100	SOIL EROSION CONTROL, SILT FENCE	LNFT			750			80		830		
	A0260	15705-1400	SOIL EROSION CONTROL, FIBER ROLL	LNFT			180			20		200		
	A0280	15706-0200	SOIL EROSION CONTROL, CHECK DAM,(FIBER ROLL)	EACH			66			4		70		
	A0300	15706-1100	SOIL EROSION CONTROL, INLET PROTECTION TYPE A	EACH			2			2		4		
	A0320	15706-1600	SOIL EROSION CONTROL, STABILIZED CONSTRUCTION EXIT	EACH			3					3		
	A0340	15706-2300	SOIL EROSION CONTROL, ON-SITE CONCRETE WASHOUT STRUCTURE	EACH			3					3		
	A0360	15802-0000	WATERING FOR DUST CONTROL	LPSM								ALL		
	A0380	20101-0000	CLEARING AND GRUBBING	ACRE	1.5	0.7				0.1		2.3		
	A0400	20301-2400	REMOVAL OF SIGN	EACH						7		7		
	A0420	20303-3500	REMOVAL OF STONE MASONRY,(AND SALVAGE)	SQYD				15			5	20		
	A0440	20304-2000	REMOVAL OF BRIDGE	LPSM						ALL		ALL		
A003	A0460	20401-0000	ROADWAY EXCAVATION	CUYD	10572	5569					1859	18000		
	A0480	20465-0000	CONSERVE AND PLACE BOULDER,(EXCAVATED)	EACH	30							30		
	A0500	20465-0000	CONSERVE AND PLACE BOULDER,(SURFACE)	EACH	52							52		
	A0520	20701-0100	SEPARATION-STABILIZATION GEOTEXTILE, CLASS 1, TYPE A	SQYD				148			52	200		
	A0540	20701-0800	SEPARATION-STABILIZATION GEOTEXTILE, CLASS 2, TYPE C	SQYD				800			100	900		
	A0560	20801-0000	STRUCTURE EXCAVATION	CUYD						670		670	Contract Quantity,	
	A0580	20810-0000	SHORING AND BRACING	LPSM						ALL		ALL		
A003	A0600	21101-1000	ROADWAY OBLITERATION, METHOD 1	SQYD	266						34	300		
	A0620	25101-0200	PLACED RIPRAP, METHOD A, CLASS 2	CUYD				46			4	50		
	A0640	25101-0500	PLACED RIPRAP, METHOD A, CLASS 5	CUYD				795			105	900		
A003	A0660	25501-0000	MECHANICALLY STABILIZED EARTH WALL	SQFT	4429						171	4600		
	A0680	25701-0200	CONTRACTOR FURNISHED MECHANICALLY STABILIZED EARTH WALL DESIGN	LPSM	ALL							ALL		
	A0700	30201-2000	ROADWAY AGGREGATE, METHOD 2	CUYD	676	525					99	1300		
	A0720	30302-1000	DITCH RECONDITIONING	LNFT				618			32	650		
	A0740	40301-0100	ASPHALT CONCRETE PAVEMENT, TYPE 1	TON	737	335					28	1100		
	A0760	40303-0100	ASPHALT CONCRETE PAVEMENT, TYPE 1, WEDGE AND LEVELING COURSE	TON	56						44	100		
	A0780	41201-0000	TACK COAT	TON	1.4	0.6						2		
	A0800	41301-0000	ASPHALT PAVEMENT MILLING,(VARIABLE UP TO 4-INCH DEPTH)	SQYD	1294						106	1400		
	A0820	55201-0200	STRUCTURAL CONCRETE, CLASS A (AE)	CUYD							215	215	Contract Quantity,	
	A0840	55201-0800	STRUCTURAL CONCRETE, CLASS D (AE)	CUYD							312	312	Contract Quantity,	
	A0860	55203-2000	STRUCTURAL CONCRETE, CLASS D (AE), FOR APPROACH SLABS, TYPE 2	CUYD							39	39	Contract Quantity,	
	A0880	55235-0000	EXPANSION JOINTS	LNFT							60	60	Contract Quantity,	

A003 Revised by Amendment A003  
Report Date: 06/08/26

C:\Users\ythaotruong\Desktop\Projects\WA\_NPS\_MORA 11(1)\1.00 pct\mws-summary-quantities202509 A.xlsx\Sheet

8-Jun-2026 3:37 PM

# SUMMARY OF QUANTITIES - Schedule A

PROJECT	SHEET NUMBER
WA NP MORA 11(1)	B.2

A M E N D	LINE ITEM NO.	PAY ITEM NUMBER	PAY ITEM DESCRIPTION	UNIT	Sheet and Description							ALLOW- ANCE	Estimated Quantities	Remarks and/or Determination of Estimated Quantity
					SECTION D	SECTION E	SECTION F	SECTION G	SECTION I	SECTION J	SECTION S		BID SCHEDULE	
					PLAN- PROFILE	PARKING	SOIL EROSION AND SEDIMENT CONTROL	DRAINAGE	TEMPORARY TRAFFIC CONTROL	PERMANENT TRAFFIC CONTROL	BRIDGE			
	A0900	55401-1000	REINFORCING STEEL	LB								25000	25000	Contract Quantity,
	A0920	55401-2000	REINFORCING STEEL, EPOXY COATED	LB								84500	84500	Contract Quantity,
	A0940	55502-0000	STRUCTURAL STEEL, FURNISHED, FABRICATED, AND ERECTED	LB								591000	591000	Contract Quantity,
	A0960	55601-0900	BRIDGE RAILING, STEEL,(YELLOWSTONE PICKET RAIL)	LNFT								413	413	Contract Quantity,
	A0980	56401-1000	BEARING DEVICE, ELASTOMERIC	EACH								8	8	Contract Quantity,
	A1000	56501-0600	DRILLED SHAFT, 48-INCH DIAMETER	LNFT								417	417	Contract Quantity,
	A1020	57502-0000	TEMPORARY BRIDGE,(WORK BRIDGE)	LPSM								ALL	ALL	
	A1040	60201-0400	12-INCH PIPE CULVERT	LNFT				21				4	25	
	A1060	60201-0600	18-INCH PIPE CULVERT	LNFT				29				1	30	
	A1080	60201-0800	24-INCH PIPE CULVERT	LNFT				255				15	270	
	A1100	60210-0600	END SECTION FOR 18-INCH PIPE CULVERT,(CONCRETE)	EACH				1					1	
	A1120	60210-0800	END SECTION FOR 24-INCH PIPE CULVERT,(CONCRETE)	EACH				6					6	
	A1140	60212-0600	ELBOW, 18-INCH	EACH				1					1	
	A1160	60404-1000	CATCH BASIN, FLH TYPE 1,(METAL FRAME AND GRATE TYPE A)	EACH				2					2	
	A1180	60901-2900	CURB, STONE, TYPE 1, 6-INCH DEPTH	LNFT								219	219	Contract Quantity,
	A1200	60901-3500	CURB, STONE, TYPE 1, 12-INCH DEPTH	LNFT	46	654						50	750	
A003	A1220	61301-0000	SIMULATED STONE MASONRY SURFACE TREATMENT	SQYD	222							18	240	
	A1240	61302-0000	SIMULATED STONE MASONRY TEST WALL	EACH	1								1	
	A1260	61501-0100	SIDEWALK, CONCRETE	SQYD	22	261						17	300	
	A1280	61504-1000	ACCESSIBILITY RAMP, CONCRETE	SQYD	7	10						3	20	
	A1300	61509-0000	DETECTABLE WARNING PANELS	SQYD	1.1	1.3						0.6	3	
	A1320	62001-1000	CLASS B MASONRY, ROCK FACE FINISH	CUYD								8	8	Contract Quantity,
	A1340	62010-1000	STONE MASONRY GUARDWALL	LNFT		187						3	190	
	A1360	62010-1000	STONE MASONRY GUARDWALL,(CONCRETE CORE)	LNFT	310								310	
	A1380	62011-0500	STONE MASONRY HEADWALL FOR 24-INCH PIPE CULVERT	EACH				6					6	
	A1400	62201-0250	DUMP TRUCK, 10 CUBIC YARD MINIMUM CAPACITY	HOURL									124	
	A1420	62201-0600	BACKHOE LOADER, 8 CUBIC FOOT MINIMUM RATED CAPACITY BUCKET, 30-INCH WIDTH	HOURL									100	
	A1440	62201-0950	WHEEL LOADER, 3 CUBIC YARD MINIMUM RATED CAPACITY	HOURL									24	
	A1460	62201-3150	HYDRAULIC EXCAVATOR, CRAWLER MOUNTED, 1.0 CUBIC YARD MINIMUM CAPACITY WITH THUMB ATTACHMENT	HOURL									100	
	A1480	62301-0000	GENERAL LABOR	HOURL									100	
	A1500	62302-1000	SPECIAL LABOR, HIRED TECHNICAL SERVICES,(FISH BIOLOGIST)	HOURL									100	
	A1520	62405-0300	PLACING CONSERVED TOPSOIL, 4-INCH DEPTH	SQYD	5032	1968						400	7400	
	A1540	62502-0000	TURF ESTABLISHMENT	SQYD	9360	2560						580	12500	
	A1560	62901-1000	ROLLED EROSION CONTROL PRODUCT, TYPE 3.B	SQYD				5117				283	5400	
	A1580	63302-0000	SIGN SYSTEM	SQFT							32.25	7.75	40	
	A1600	63316-1000	REMOVE AND RESET SIGN	EACH							5		5	
	A1620	63318-1000	SNOW POLE HOLDER	EACH							14		14	
	A1640	63401-0300	PAVEMENT MARKINGS, TYPE B, SOLID,(WHITE)	LNFT							9572	128	9700	

A003 Revised by Amendment A003  
Report Date: 06/08/26

C:\Users\ythao.truong\Desktop\Projects\WA\_NPS\_MORA\_11(1)\1.00 pct\mws-summary-quantities202509 A.xlsx\Sheet (2)

# SUMMARY OF QUANTITIES - Schedule A

PROJECT	SHEET NUMBER
WA NP MORA 11(1)	B.3

A M E N D	LINE ITEM NO.	PAY ITEM NUMBER	PAY ITEM DESCRIPTION	UNIT	Sheet and Description							ALLOW- ANCE	Estimated Quantities	Remarks and/or Determination of Estimated Quantity
					SECTION D	SECTION E	SECTION F	SECTION G	SECTION I	SECTION J	SECTION S		BID SCHEDULE	
					PLAN- PROFILE	PARKING	SOIL EROSION AND SEDIMENT CONTROL	DRAINAGE	TEMPORARY TRAFFIC CONTROL	PERMANENT TRAFFIC CONTROL	BRIDGE			
	A1660	63401-0300	PAVEMENT MARKINGS, TYPE B, SOLID,(YELLOW)	LNFT						5026		74	5100	
	A1680	63401-0400	PAVEMENT MARKINGS, TYPE B, BROKEN	LNFT						258		12	270	
	A1700	63403-0900	PAVEMENT MARKINGS, TYPE I	SQFT						146		4	150	
	A1720	63405-0850	PAVEMENT MARKINGS, TYPE B, ACCESSIBILITY SYMBOL	EACH						2			2	
	A1740	63502-0600	TEMPORARY TRAFFIC CONTROL, BARRICADE TYPE 3,(8 FEET WIDE)	EACH					6			4	10	
	A1760	63502-0900	TEMPORARY TRAFFIC CONTROL, CONE, TYPE 28-INCH	EACH					60				60	
	A1780	63502-1250	TEMPORARY TRAFFIC CONTROL, TUBULAR MARKER, TYPE 42-INCH	EACH					12				12	
	A1800	63502-1300	TEMPORARY TRAFFIC CONTROL, DRUM	EACH					100				100	
	A1820	63502-1500	TEMPORARY TRAFFIC CONTROL, WARNING LIGHT TYPE A	EACH					12				12	
	A1840	63502-1600	TEMPORARY TRAFFIC CONTROL, WARNING LIGHT TYPE B	EACH					10				10	
	A1860	63502-1700	TEMPORARY TRAFFIC CONTROL, WARNING LIGHT TYPE C	EACH					100				100	
	A1880	63502-2000	TEMPORARY TRAFFIC CONTROL, PORTABLE CHANGEABLE MESSAGE SIGN	EACH					3				3	
	A1900	63502-3100	TEMPORARY TRAFFIC CONTROL, TRAFFIC SIGNAL SYSTEM	EACH					1				1	
	A1920	63503-0700	TEMPORARY TRAFFIC CONTROL, PAVEMENT MARKINGS	LNFT					60				60	
	A1940	63503-1000	TEMPORARY TRAFFIC CONTROL, PLASTIC FENCE,(ORANGE, PERIMETER)	LNFT			1830					270	2100	
	A1960	63504-1000	TEMPORARY TRAFFIC CONTROL, CONSTRUCTION SIGN	SQFT			10.5		630.5			69	710	
	A1980	63506-0500	TEMPORARY TRAFFIC CONTROL, FLAGGER	HOURL					2500				2500	
	A2000	63507-0700	TEMPORARY TRAFFIC CONTROL, TRAFFIC CONTROL SUPERVISOR	DAY					550				550	
	A2020	63610-0000	CONDUIT,(8-INCH HDPE)	LNFT	300							30	330	
	A2040	63621-1000	UTILITY BOX, PULLBOX	EACH	4								4	
	A2060	63701-0000	FIELD OFFICE	EACH									37	Each unit equals a month
	A2080	64603-0500	FIXTURE, BICYCLE STORAGE RACK	EACH		3							3	
	A2100	64604-3000	FIXTURE, PEDESTRIAN RAILING,(STONE-TIMBER)	LNFT		285						15	300	
	A2120	64703-1000	MITIGATION, LANDSCAPING LOG	EACH	63								63	
	A2140	64703-8000	MITIGATION, BANK STABILIZATION,(DEFLECTOR LOG STRUCTURE)	EACH				1					1	
	A2160	64707-1000	MITIGATION, ARCHAEOLOGICAL SITE MONITORING	HOURL									100	

C:\Users\ythao.truong\Desktop\Projects\WA\_NPS\_MORA\_11(1)\1.00 pvt\mw-summary-quantities202509\_A.xlsm]Sheet (3)

# SUMMARY OF QUANTITIES - Schedule B

PROJECT	SHEET NUMBER
WA NP MORA 11(1)	B.4

A M E N D	LINE ITEM NO.	PAY ITEM NUMBER	PAY ITEM DESCRIPTION	UNIT	Sheet and Description							ALLOW- ANCE	Estimated Quantities	Remarks and/or Determination of Estimated Quantity
					SECTION D	SECTION E	SECTION F	SECTION G	SECTION I	SECTION J	SECTION S		BID SCHEDULE	
					PLAN- PROFILE	PARKING	SOIL EROSION AND SEDIMENT CONTROL	DRAINAGE	TEMPORARY TRAFFIC CONTROL	PERMANENT TRAFFIC CONTROL	BRIDGE			
	B0100	15101-0000	MOBILIZATION	LPSM									ALL	
	B0120	15201-0000	CONSTRUCTION SURVEY AND STAKING	LPSM									ALL	
	B0140	15301-0000	CONTRACTOR QUALITY CONTROL	LPSM									ALL	
	B0160	15401-0000	CONTRACTOR TESTING	LPSM									ALL	
	B0180	15501-0000	CONSTRUCTION SCHEDULE	LPSM									ALL	
	B0200	15702-6000	SOIL EROSION CONTROL, TEMPORARY STREAM DIVERSION	LPSM			ALL						ALL	
	B0220	15703-2500	SOIL EROSION CONTROL, MULCHING, HYDRAULIC METHOD	ACRE			0.5						0.5	
	B0240	15705-0100	SOIL EROSION CONTROL, SILT FENCE	LNFT			750				80		830	
	B0260	15705-1400	SOIL EROSION CONTROL, FIBER ROLL	LNFT			180				20		200	
	B0280	15706-0200	SOIL EROSION CONTROL, CHECK DAM,(FIBER ROLL)	EACH			66				4		70	
	B0300	15706-1100	SOIL EROSION CONTROL, INLET PROTECTION TYPE A	EACH			2				2		4	
	B0320	15706-1600	SOIL EROSION CONTROL, STABILIZED CONSTRUCTION EXIT	EACH			3						3	
	B0340	15706-2300	SOIL EROSION CONTROL, ON-SITE CONCRETE WASHOUT STRUCTURE	EACH			3						3	
	B0360	15802-0000	WATERING FOR DUST CONTROL	LPSM									ALL	
	B0380	20101-0000	CLEARING AND GRUBBING	ACRE	1.5	0.7					0.1		2.3	
	B0400	20301-2400	REMOVAL OF SIGN	EACH						7			7	
	B0420	20303-3500	REMOVAL OF STONE MASONRY,(AND SALVAGE)	SQYD				15				5	20	
	B0440	20304-2000	REMOVAL OF BRIDGE	LPSM							ALL		ALL	
A003	B0460	20401-0000	ROADWAY EXCAVATION	CUYD	10572	5569						1859	18000	
	B0480	20465-0000	CONSERVE AND PLACE BOULDER,(EXCAVATED)	EACH	30								30	
	B0500	20465-0000	CONSERVE AND PLACE BOULDER,(SURFACE)	EACH	52								52	
	B0520	20701-0100	SEPARATION-STABILIZATION GEOTEXTILE, CLASS 1, TYPE A	SQYD				148				52	200	
	B0540	20701-0800	SEPARATION-STABILIZATION GEOTEXTILE, CLASS 2, TYPE C	SQYD				800				100	900	
	B0560	20801-0000	STRUCTURE EXCAVATION	CUYD							720		720	Contract Quantity,
	B0580	20810-0000	SHORING AND BRACING	LPSM							ALL		ALL	
A003	B0600	21101-1000	ROADWAY OBLITERATION, METHOD 1	SQYD	266							34	300	
	B0620	25101-0200	PLACED RIPRAP, METHOD A, CLASS 2	CUYD				46				4	50	
	B0640	25101-0500	PLACED RIPRAP, METHOD A, CLASS 5	CUYD				795				105	900	
A003	B0660	25501-0000	MECHANICALLY STABILIZED EARTH WALL	SQFT	4429							171	4600	
	B0680	25701-0200	CONTRACTOR FURNISHED MECHANICALLY STABILIZED EARTH WALL DESIGN	LPSM	ALL								ALL	
	B0700	30201-2000	ROADWAY AGGREGATE, METHOD 2	CUYD	676	525						99	1300	
	B0720	30302-1000	DITCH RECONDITIONING	LNFT				618				32	650	
	B0740	40301-0100	ASPHALT CONCRETE PAVEMENT, TYPE 1	TON	733	335						32	1100	
	B0760	40303-0100	ASPHALT CONCRETE PAVEMENT, TYPE 1, WEDGE AND LEVELING COURSE	TON	56							44	100	
	B0780	41201-0000	TACK COAT	TON	1.4	0.6							2	
	B0800	41301-0000	ASPHALT PAVEMENT MILLING,(VARIABLE UP TO 4-INCH DEPTH)	SQYD	1294							106	1400	
	B0820	55201-0200	STRUCTURAL CONCRETE, CLASS A (AE)	CUYD							216		216	Contract Quantity,
	B0840	55201-0800	STRUCTURAL CONCRETE, CLASS D (AE)	CUYD							312		312	Contract Quantity,
	B0860	55203-2000	STRUCTURAL CONCRETE, CLASS D (AE), FOR APPROACH SLABS, TYPE 2	CUYD							39		39	Contract Quantity,
	B0880	55235-0000	EXPANSION JOINTS	LNFT							60		60	Contract Quantity,

A003 Revised by Amendment A003  
Report Date: 06/08/26

C:\Users\ythaotruong\Desktop\Projects\WA\_NPS\_MORA\_11(1)\1.00 pvt\mws-summary-quantities202509 B.xlsx\Sheet

8-Jun-2026 3:42 PM

# SUMMARY OF QUANTITIES - Schedule B

PROJECT	SHEET NUMBER
WA NP MORA 11(1)	B.5

A M E N D	LINE ITEM NO.	PAY ITEM NUMBER	PAY ITEM DESCRIPTION	UNIT	Sheet and Description							ALLOW- ANCE	Estimated Quantities	Remarks and/or Determination of Estimated Quantity
					SECTION D	SECTION E	SECTION F	SECTION G	SECTION I	SECTION J	SECTION S		BID SCHEDULE	
					PLAN- PROFILE	PARKING	SOIL EROSION AND SEDIMENT CONTROL	DRAINAGE	TEMPORARY TRAFFIC CONTROL	PERMANENT TRAFFIC CONTROL	BRIDGE			
	B0900	55401-1000	REINFORCING STEEL	LB								27000	27000	Contract Quantity,
	B0920	55401-2000	REINFORCING STEEL, EPOXY COATED	LB								84500	84500	Contract Quantity,
	B0940	55502-0000	STRUCTURAL STEEL, FURNISHED, FABRICATED, AND ERECTED	LB								591000	591000	Contract Quantity,
	B0960	55601-0900	BRIDGE RAILING, STEEL,(YELLOWSTONE PICKET RAIL)	LNFT								413	413	Contract Quantity,
	B0980	56401-1000	BEARING DEVICE, ELASTOMERIC	EACH								8	8	Contract Quantity,
	B1000	56501-0600	DRILLED SHAFT, 48-INCH DIAMETER	LNFT								417	417	Contract Quantity,
	B1020	57502-0000	TEMPORARY BRIDGE,(WORK BRIDGE)	LPSM								ALL	ALL	
	B1040	60201-0400	12-INCH PIPE CULVERT	LNFT				21			4		25	
	B1060	60201-0600	18-INCH PIPE CULVERT	LNFT				29			1		30	
	B1080	60201-0800	24-INCH PIPE CULVERT	LNFT				255			15		270	
	B1100	60210-0600	END SECTION FOR 18-INCH PIPE CULVERT,(CONCRETE)	EACH				1					1	
	B1120	60210-0800	END SECTION FOR 24-INCH PIPE CULVERT,(CONCRETE)	EACH				6					6	
	B1140	60212-0600	ELBOW, 18-INCH	EACH				1					1	
	B1160	60404-1000	CATCH BASIN, FLH TYPE 1,(METAL FRAME AND GRATE TYPE A)	EACH				2					2	
	B1180	60901-2900	CURB, STONE, TYPE 1, 6-INCH DEPTH,(STONE CURB AT BRIDGE)	LNFT								219	219	Contract Quantity,
	B1200	60901-3500	CURB, STONE, TYPE 1, 12-INCH DEPTH	LNFT	46	654					50		750	
	B1220	61501-0100	SIDEWALK, CONCRETE	SQYD	22	261					17		300	
	B1240	61504-1000	ACCESSIBILITY RAMP, CONCRETE	SQYD	7	10					3		20	
	B1260	61509-0000	DETECTABLE WARNING PANELS	SQYD	1.1	1.3					0.6		3	
	B1280	62001-1000	CLASS B MASONRY, ROCK FACE FINISH	CUYD								52	52	Contract Quantity,
A003	B1300	62001-1000	CLASS B MASONRY, ROCK FACE FINISH,(MSE WALL)	CUYD	37							3	40	
	B1320	62010-1000	STONE MASONRY GUARDWALL	LNFT		187						3	190	
	B1340	62010-1000	STONE MASONRY GUARDWALL,(CONCRETE CORE)	LNFT	310								310	
	B1360	62011-0500	STONE MASONRY HEADWALL FOR 24-INCH PIPE CULVERT	EACH				6					6	
	B1380	62201-0250	DUMP TRUCK, 10 CUBIC YARD MINIMUM CAPACITY	HOURL									124	
	B1400	62201-0600	BACKHOE LOADER, 8 CUBIC FOOT MINIMUM RATED CAPACITY BUCKET, 30-INCH WIDTH	HOURL									100	
	B1420	62201-0950	WHEEL LOADER, 3 CUBIC YARD MINIMUM RATED CAPACITY	HOURL									24	
	B1440	62201-3150	HYDRAULIC EXCAVATOR, CRAWLER MOUNTED, 1.0 CUBIC YARD MINIMUM CAPACITY WITH THUMB ATTACHMENT	HOURL									100	
	B1460	62301-0000	GENERAL LABOR	HOURL									100	
	B1480	62302-1000	SPECIAL LABOR, HIRED TECHNICAL SERVICES,(FISH BIOLOGIST)	HOURL									100	
	B1500	62405-0300	PLACING CONSERVED TOPSOIL, 4-INCH DEPTH	SQYD	5032	1968					400		7400	
	B1520	62502-0000	TURF ESTABLISHMENT	SQYD	9360	2560					580		12500	
	B1540	62901-1000	ROLLED EROSION CONTROL PRODUCT, TYPE 3.B	SQYD			5117				283		5400	
	B1560	63302-0000	SIGN SYSTEM	SQFT						32.25	7.75		40	
	B1580	63316-1000	REMOVE AND RESET SIGN	EACH						5			5	
	B1600	63318-1000	SNOW POLE HOLDER	EACH						14			14	
	B1620	63401-0300	PAVEMENT MARKINGS, TYPE B, SOLID,(WHITE)	LNFT						9572	128		9700	
	B1640	63401-0300	PAVEMENT MARKINGS, TYPE B, SOLID,(YELLOW)	LNFT						5026	74		5100	

A003 Revised by Amendment A003  
Report Date: 06/08/26

C:\Users\ythaotruong\Desktop\Projects\WA\_NPS\_MORA\_11(1)\1.00 pct\summary-quantities202509 B.xlsx\Sheet (2) 8-Jun-2026 3:42 PM

# SUMMARY OF QUANTITIES - Schedule B

PROJECT	SHEET NUMBER
WA NP MORA 11(1)	B.6

A M E N D	LINE ITEM NO.	PAY ITEM NUMBER	PAY ITEM DESCRIPTION	UNIT	Sheet and Description							ALLOW- ANCE	Estimated Quantities	Remarks and/or Determination of Estimated Quantity
					SECTION D	SECTION E	SECTION F	SECTION G	SECTION I	SECTION J	SECTION S		BID SCHEDULE	
					PLAN- PROFILE	PARKING	SOIL EROSION AND SEDIMENT CONTROL	DRAINAGE	TEMPORARY TRAFFIC CONTROL	PERMANENT TRAFFIC CONTROL	BRIDGE			
	B1660	63401-0400	PAVEMENT MARKINGS, TYPE B, BROKEN	LNFT						258		12	270	
	B1680	63403-0900	PAVEMENT MARKINGS, TYPE I	SQFT						146		4	150	
	B1700	63405-0850	PAVEMENT MARKINGS, TYPE B, ACCESSIBILITY SYMBOL	EACH						2			2	
	B1720	63502-0600	TEMPORARY TRAFFIC CONTROL, BARRICADE TYPE 3,(8 FEET WIDE)	EACH					6			4	10	
	B1740	63502-0900	TEMPORARY TRAFFIC CONTROL, CONE, TYPE 28-INCH	EACH					60				60	
	B1760	63502-1250	TEMPORARY TRAFFIC CONTROL, TUBULAR MARKER, TYPE 42-INCH	EACH					12				12	
	B1780	63502-1300	TEMPORARY TRAFFIC CONTROL, DRUM	EACH					100				100	
	B1800	63502-1500	TEMPORARY TRAFFIC CONTROL, WARNING LIGHT TYPE A	EACH					12				12	
	B1820	63502-1600	TEMPORARY TRAFFIC CONTROL, WARNING LIGHT TYPE B	EACH					10				10	
	B1840	63502-1700	TEMPORARY TRAFFIC CONTROL, WARNING LIGHT TYPE C	EACH					100				100	
	B1860	63502-2000	TEMPORARY TRAFFIC CONTROL, PORTABLE CHANGEABLE MESSAGE SIGN	EACH					3				3	
	B1880	63502-3100	TEMPORARY TRAFFIC CONTROL, TRAFFIC SIGNAL SYSTEM	EACH					1				1	
	B1900	63503-0700	TEMPORARY TRAFFIC CONTROL, PAVEMENT MARKINGS	LNFT					60				60	
	B1920	63503-1000	TEMPORARY TRAFFIC CONTROL, PLASTIC FENCE,(ORANGE, PERIMETER)	LNFT			1830					270	2100	
	B1940	63504-1000	TEMPORARY TRAFFIC CONTROL, CONSTRUCTION SIGN	SQFT			10.5		630.5			69	710	
	B1960	63506-0500	TEMPORARY TRAFFIC CONTROL, FLAGGER	HOUR					2500				2500	
	B1980	63507-0700	TEMPORARY TRAFFIC CONTROL, TRAFFIC CONTROL SUPERVISOR	DAY					550				550	
	B2000	63610-0000	CONDUIT,(8-INCH HDPE)	LNFT	300							30	330	
	B2020	63621-1000	UTILITY BOX, PULLBOX	EACH	4								4	
	B2040	63701-0000	FIELD OFFICE	EACH									37	Each unit equals a month
	B2060	64603-0500	FIXTURE, BICYCLE STORAGE RACK	EACH		3							3	
	B2080	64604-3000	FIXTURE, PEDESTRIAN RAILING,(STONE-TIMBER)	LNFT		285						15	300	
	B2100	64703-1000	MITIGATION, LANDSCAPING LOG	EACH	63								63	
	B2120	64703-8000	MITIGATION, BANK STABILIZATION,(DEFLECTOR LOG STRUCTURE)	EACH				1					1	
	B2140	64707-1000	MITIGATION, ARCHAEOLOGICAL SITE MONITORING	HOUR									100	

C:\Users\ythao.truong\Desktop\Projects\WA\_NPS\_MORA\_11(1)\1.00 pct\mw-summary-quantities202509 B.xlsx Sheet (3)

**EARTHWORK SUMMARY TABLE**

PROJECT  
WA NP MORA 11(1)  
SHEET NUMBER  
D.2

LOCATION	SCHEDULE	Shrink/Swell Factor	CUT						FILL						TOTALS	
			Item 20401-0000 ROADWAY EXCAVATION	(+) Additional Excavation (See Note 2) for info only	(-) Topsoil Stripped from Existing for info only	(-) Conserved boulders from excavation for info only	Total Unadjusted Excavation Available for Fill for info only	Total Adjusted Available for Fill (adjusted based on shrink/swell factor) for info only	Embankment for info only	(+) Additional Backfill Needed (See Note 3) for info only	(+) Topsoil placed on embankment for info only	(+) Boulders placed on embankment for info only	Total Fill Needed for info only	Total Adjusted Available For Fill less Total Fill Needed for info only	Waste (50% swell for topsoil; 5% swell for all other excavated material) for info only	
UNITS		%	CUYD	CUYD	CUYD	CUYD	CUYD	CUYD	CUYD	CUYD	CUYD	CUYD	CUYD	CUYD	CUYD	
"MAIN 01" 11+30 to 13+32	A&B	-3%	85				85	82	11		-		11	71		
"MAIN 01" 13+32 to 15+60	A&B	-3%	2,137				2,137	2,073	11		-		11	2,062		
"MAIN 01" 15+60 to 18+49	A&B	-3%	197 1,089				197 1,089	191 1,056	146 152		-		146 152	45 905		
"MAIN 01" 20+62 to 22+20	A&B	-3%	3,018 3,808				3,018 3,808	2,928 3,694	8 0		-		8 0	2,920 3,694		
"MAIN 01" 22+20 to 23+14	A&B	-3%	458				458	444	0		-		0	444		
"MAIN 01" 23+14 to 25+50	A&B	-3%	84				84	81	6		-		6	75		
West Parking Lot	A&B	-3%	5,569				5,569	5,402	784		-		784	4,618		
Riprap (for info only)	A&B	-3%	-	795			795	771	-		-		-	771		
Pipe culverts (for info only)	A&B	-3%		616			600	582		588			588	-6		
Fryingpan Creek Bridge regrading at abutments	A&B	-3%	5,058 2,911				5,058 2,911	4,906 2,824	410 150		-		410 150	4,496 2,674		
Fryingpan Creek Bridge (See S Sheets)	A	-3%	-	670			670	650	-		-		-	650		
Fryingpan Creek Bridge (See S Sheets)	B	-3%	-	720			720	698	-		-		-	698		
MSE Wall (for info only)	A&B	-3%	-	983 1,313			983 1,313	953 1,274	-	762 914			762 914	159 359		
Conserved boulders (excavated) (for info only)	A&B	-5%				-53	-53	-50				50		0		
Topsoil (for info only)	A&B	-10%				-941	-941	-847			822			25		
<b>SCHEDULE A TOTALS</b>			<b>16,606 16,141</b>	<b>3,064 3,394</b>	<b>-941</b>	<b>-53</b>	<b>18,660 18,525</b>	<b>18,167 18,036</b>	<b>1,378 1,115</b>	<b>1,350 1,502</b>	<b>822</b>	<b>50</b>	<b>2,728 2,617</b>	<b>16,362 16,341</b>	<b>17,723 17,701</b>	
<b>SCHEDULE B TOTALS</b>			<b>16,606 16,141</b>	<b>3,114 3,444</b>	<b>-941</b>	<b>-53</b>	<b>18,710 18,575</b>	<b>18,216 18,085</b>	<b>1,378 1,115</b>	<b>1,350 1,502</b>	<b>822</b>	<b>50</b>	<b>2,728 2,617</b>	<b>16,410 16,389</b>	<b>17,776 17,754</b>	

- NOTE:**
- All volumes are in-place cubic yards (i.e. in situ or compacted in place).
  - Additional excavation suitable for use in embankment construction (Section 208 Structure Excavation for Fryingpan Creek Bridge and Section 209 Structure Excavation for riprap, culverts and MSE wall).
  - Backfill material needed for MSE wall in addition to select borrow

Revised by Amendment A003

**TABULATION OF QUANTITIES**

(SHEET 1 OF 2)

8 June 2026 9:06 AM c:\pwworking\wf\0433907\mora.11-1\_in\_D-2-8.dgn [TABULATION OF QUANTITIES]

PROJECT	SHEET NUMBER
WA NP MORA 11(1)	D.3

**SUNRISE ROAD PLAN AND PROFILE QUANTITIES**

SCHEDULE	ITEM	DESCRIPTION	UNIT	QUANTITY	NOTES
A&B	20101-0000	CLEARING AND GRUBBING	ACRE	1.5	
A&B	20401-0000	ROADWAY EXCAVATION	CUYD	11037 10572	△
A&B	20465-0000	CONSERVE AND PLACE BOULDER (SURFACE)	EACH	52	Existing roadside barrier rocks
A&B	20465-0000	CONSERVE AND PLACE BOULDER (EXCAVATED)	EACH	30	Oversized boulders encountered in roadway or structure excavation
A&B	21101-1000	ROADWAY OBLITERATION, METHOD 1	SQYD	669 266	△
A&B	30202-2000	ROADWAY AGGREGATE, METHOD 2	CUYD	676	
A&B	40301-0100	ASPHALT CONCRETE PAVEMENT, TYPE 1	TON	737	1.97 TON/CUYD
A&B	40303-0100	ASPHALT CONCRETE PAVEMENT, TYPE 1, WEDGE AND LEVELING	TON	56	1.97 TON/CUYD
A&B	41201-0000	TACK COAT	TON	1.4	0.1 GAL/SQYD, 240 GAL/TON
A&B	41301-0000	ASPHALT PAVEMENT MILLING (UP TO 4-INCH DEPTH)	SQYD	1294	
A&B	60901-3500	CURB, STONE, TYPE 1, 12-INCH DEPTH	LNFT	46	Use salvaged stone masonry from existing structures
A&B	61501-0100	SIDEWALK, CONCRETE	SQYD	22	4-INCH DEPTH; Does not include sidewalk on bridge deck
A&B	61504-1000	ACCESSIBILITY RAMP, CONCRETE	SQYD	7	
A&B	61509-0000	DETECTABLE WARNING PANELS	SQYD	1.1	
A&B	62010-1000	STONE MASONRY GUARDWALL (CONCRETE CORE)	LNFT	310	Use salvaged stone masonry from existing structures
A&B	62405-0300	PLACING CONSERVED TOPSOIL, 4-INCH DEPTH	SQYD	5032	
A&B	62502-0000	TURF ESTABLISHMENT	SQYD	9360	Seeds to be government-provided
A&B	63601-0000	CONDUIT (8-INCH HDPE)	LNFT	300	Empty conduit for future utility
A&B	63621-1000	UTILITY BOX, PULLBOX	EACH	4	
A&B	64703-1000	MITIGATION, LANDSCAPING LOG	EACH	63	Harvest landscaping logs from trees salvaged during clearing operations; Place logs as directed by CO, see Sheet D.10

**MECHANICALLY STABILIZED EARTH WALL QUANTITIES**

SCHEDULE	ITEM	DESCRIPTION	UNIT	QUANTITY	NOTES
A&B	25501-0000	MECHANICALLY STABILIZED EARTH WALL	SQFT	2455	Includes abutment backfill limits; See Sheet S.07 for details
A&B	25701-0200	CONTRACTOR FURNISHED MECHANICALLY STABILIZED EARTH WALL DESIGN	LPSM	ALL	
A	61301-0000	SIMULATED STONE MASONRY SURFACE TREATMENT	SQYD	163	Does not include wingwall and abutment surfaces
A	61302-0000	SIMULATED STONE MASONRY TEST WALL	EACH	1	
B	62001-1000	CLASS B MASONRY, ROCK FACE FINISH (MSE WALL)	CUYD	27	Does not include wingwall and abutment surfaces

**MECHANICALLY STABILIZED EARTH WALL QUANTITIES**

SCHEDULE	ITEM	DESCRIPTION	UNIT	QUANTITY	TOTAL	NOTES
A&B	25501-0000	MECHANICALLY STABILIZED EARTH WALL (WEST ABUTMENT)	SQFT	2946	4429	Includes abutment backfill limits; See Sheet S.07 for details
		MECHANICALLY STABILIZED EARTH WALL (EAST ABUTMENT)	SQFT	1483		
A&B	25701-0200	CONTRACTOR FURNISHED MECHANICALLY STABILIZED EARTH WALL DESIGN	LPSM	ALL	ALL	
A	61301-0000	SIMULATED STONE MASONRY SURFACE TREATMENT (WEST ABUTMENT)	SQYD	182	222	Does not include wingwall and abutment surfaces
		SIMULATED STONE MASONRY SURFACE TREATMENT (EAST ABUTMENT)	SQYD	40		
A	61302-0000	SIMULATED STONE MASONRY TEST WALL	EACH	1	1	
B	62001-1000	CLASS B MASONRY, ROCK FACE FINISH (MSE WALL) (WEST ABUTMENT)	CUYD	30	37	Does not include wingwall and abutment surfaces
		CLASS B MASONRY, ROCK FACE FINISH (MSE WALL) (EAST ABUTMENT)	CUYD	7		

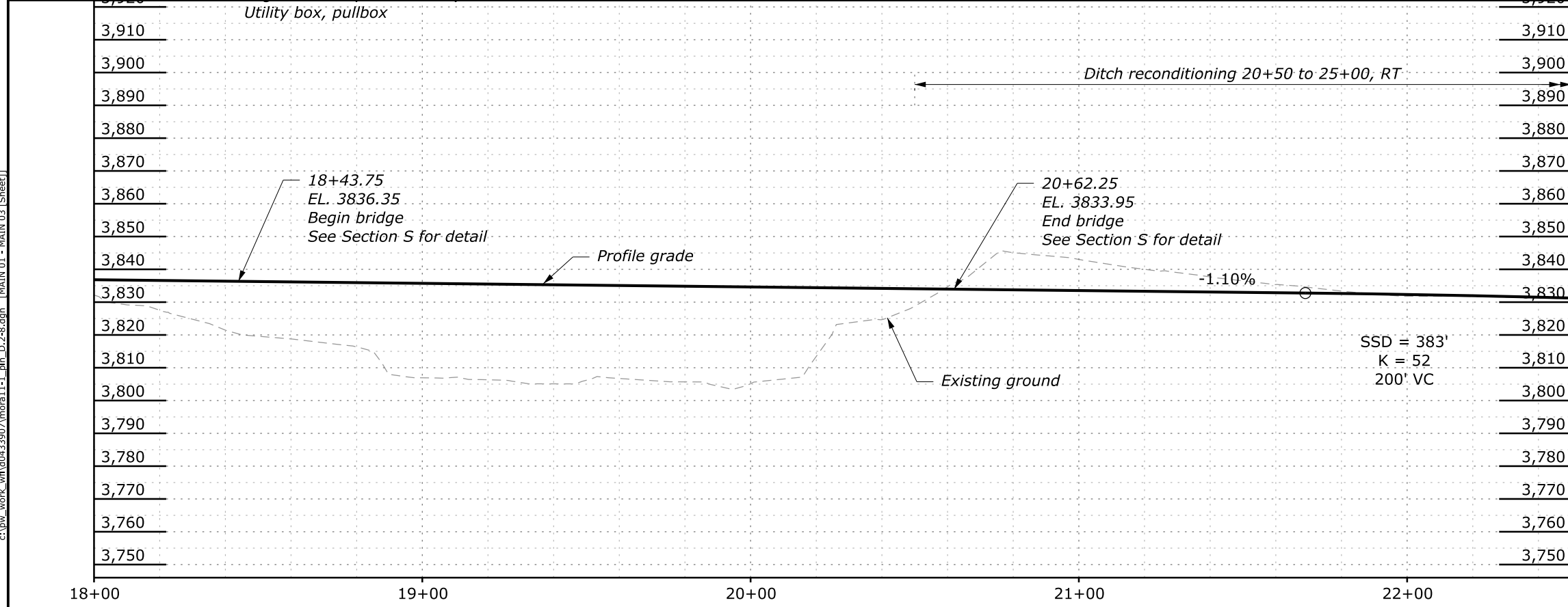
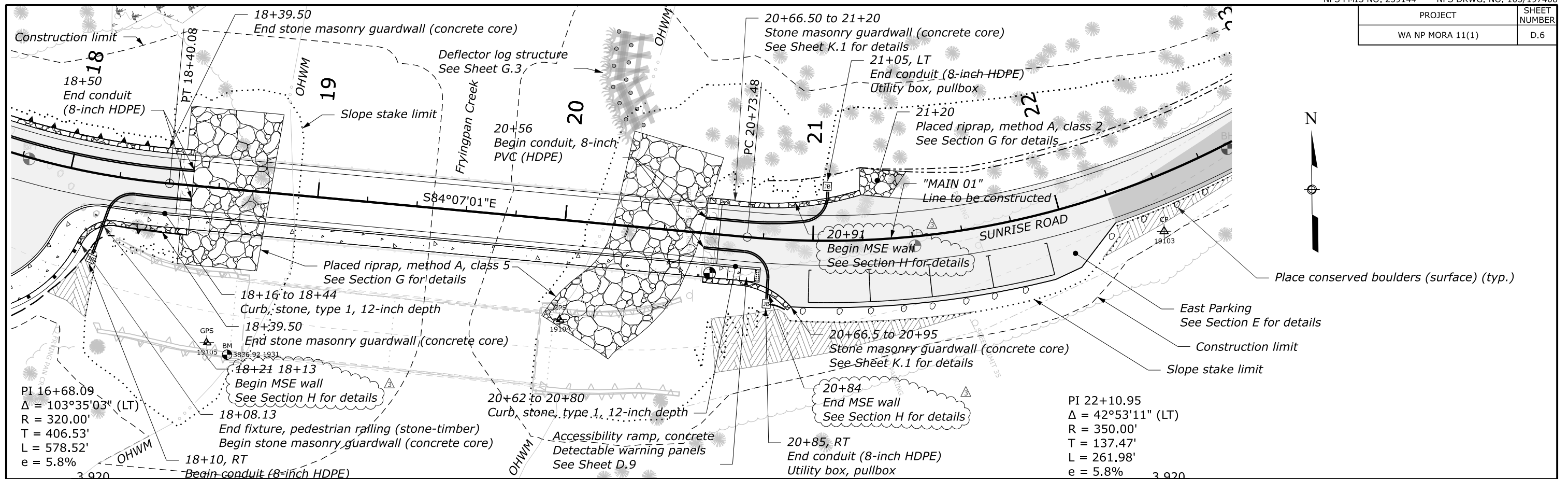
△ Revised by Amendment A003

**TABULATION OF QUANTITIES**

(SHEET 2 OF 2)

8 June 2026 3:10 PM c:\pw\_work\wfd\0433907\mofa11-1\_1n\_D-2-8.dgn [TABULATION OF QUANTITIES (SHEET 02 OF 02)]

PROJECT	SHEET NUMBER
WA NP MORA 11(1)	D.6



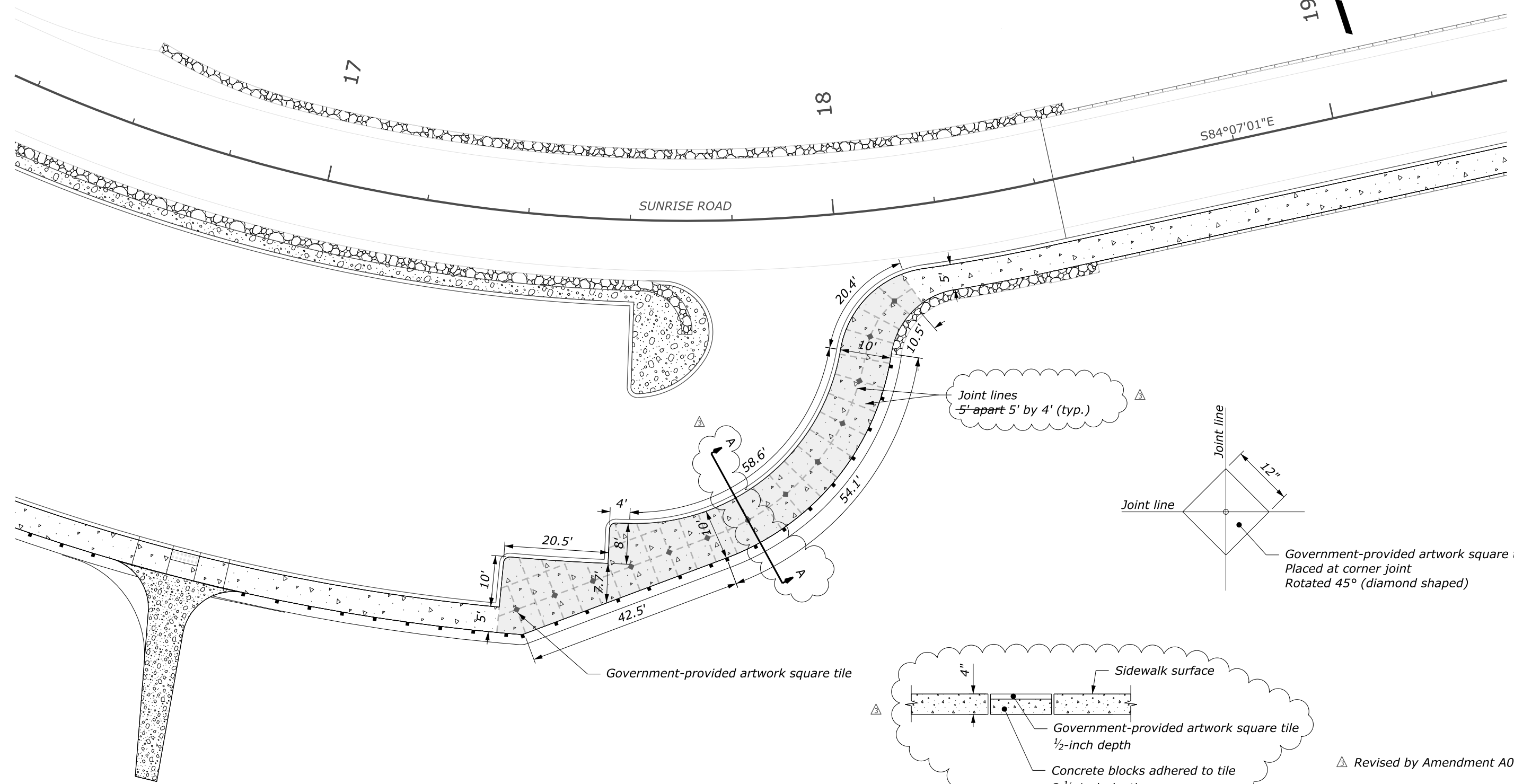
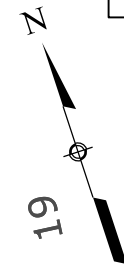
**LEGEND:**

	Milling & overlay		Sidewalk, concrete
	Full depth construction		
	Roadway obliteration, method 1		

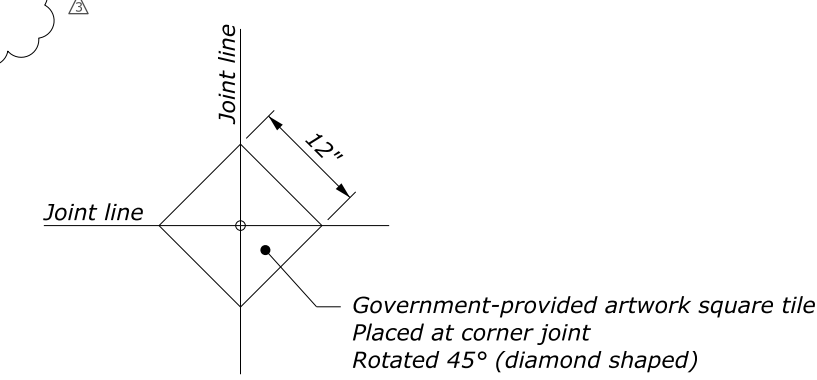
Revised by Amendment A003

c:\pwwork\w\10433907\mora11-1\_pln\_d-2-8.dgn [MAIN 01 - MAIN 03 (Sheet)] 8 June 2026 10:21 AM

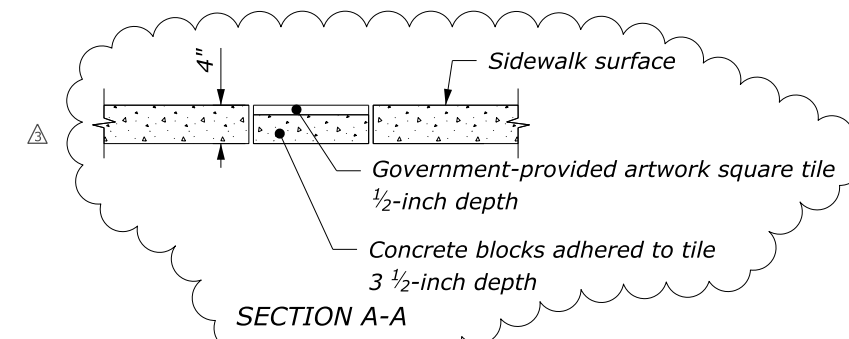
PROJECT	SHEET NUMBER
WA NP MORA 11(1)	E.6



Joint lines  
5' apart 5' by 4' (typ.)



Government-provided artwork square tile



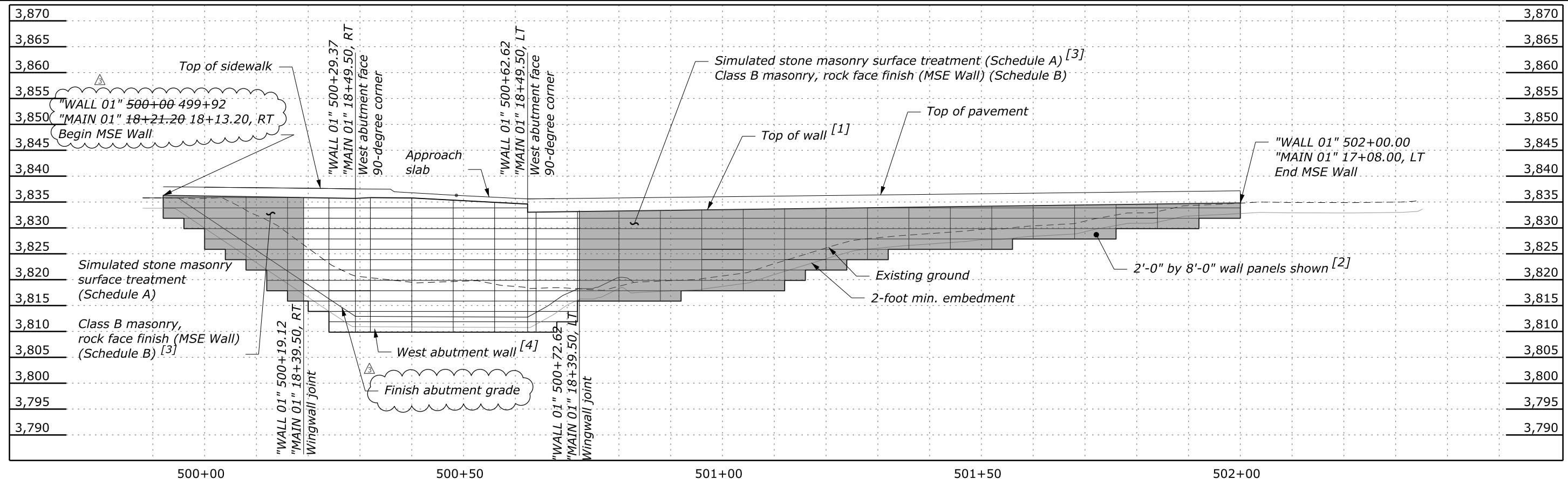
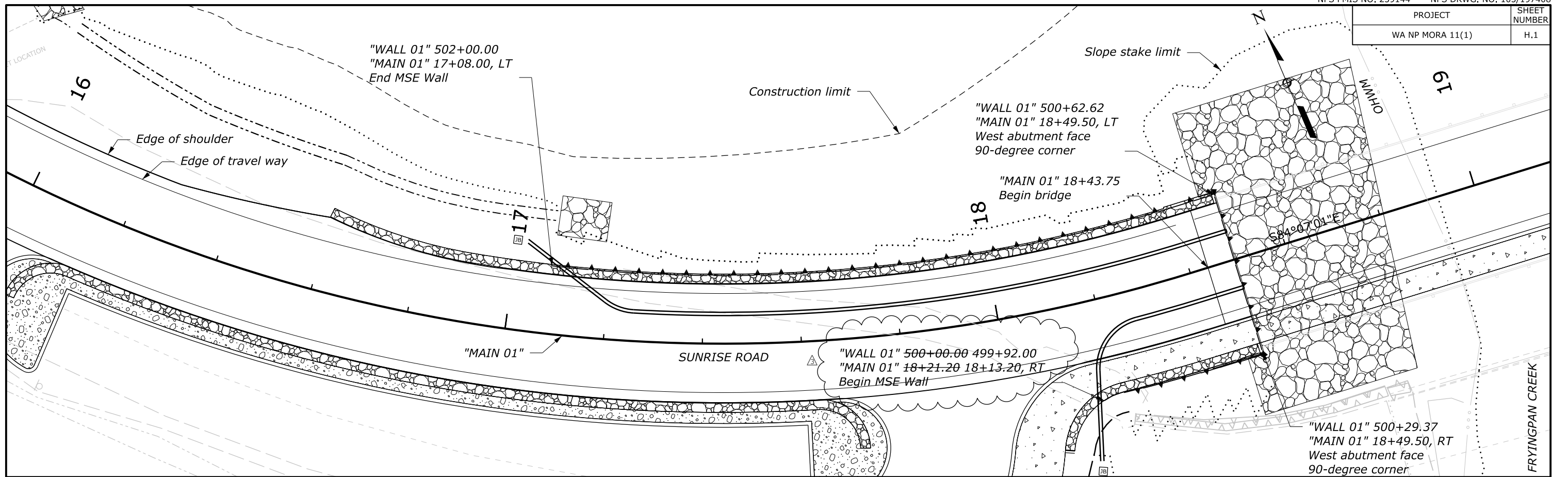
Revised by Amendment A003

**NOTE:**  
 1. Joint lines are conceptual. Space joint lines to accommodate 13 square tiles.  
 2. Install artwork tiles according to Section 615.

**SIDEWALK ARTWORK TILE**

c:\pw\_work\wfh\d0497798\mora11\_1\_dgn\_e-2-6.dgn [Sidewalk Artwork Tile] 8 June 2026 11:41 AM

PROJECT	SHEET NUMBER
WA NP MORA 11(1)	H.1



**FOOTNOTE:**

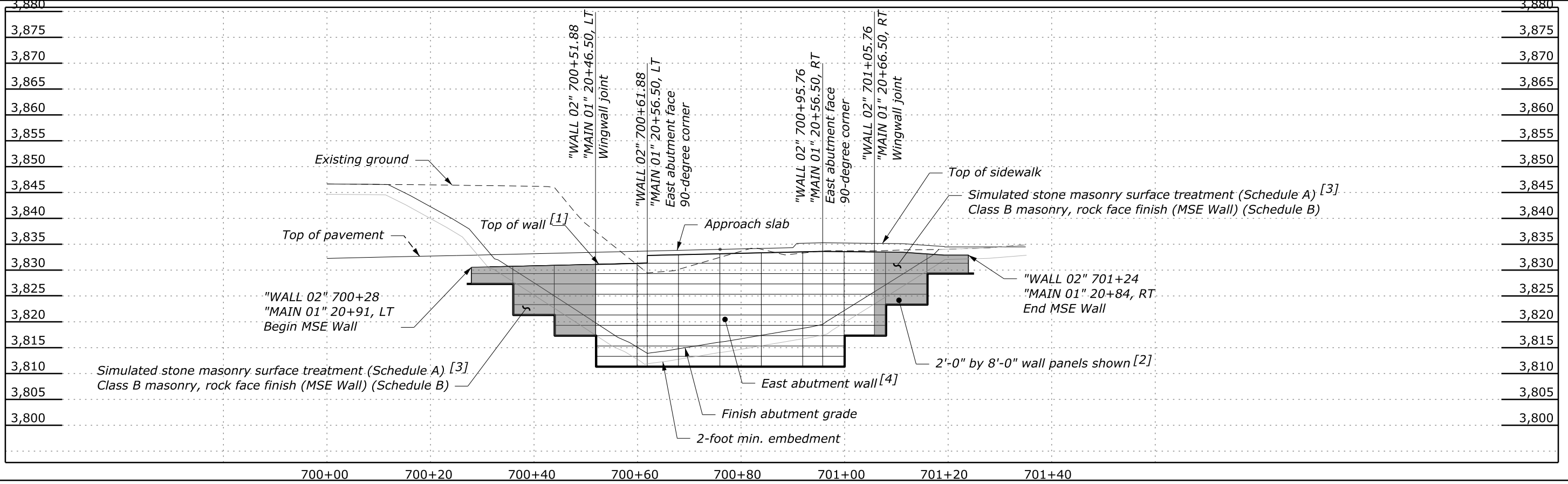
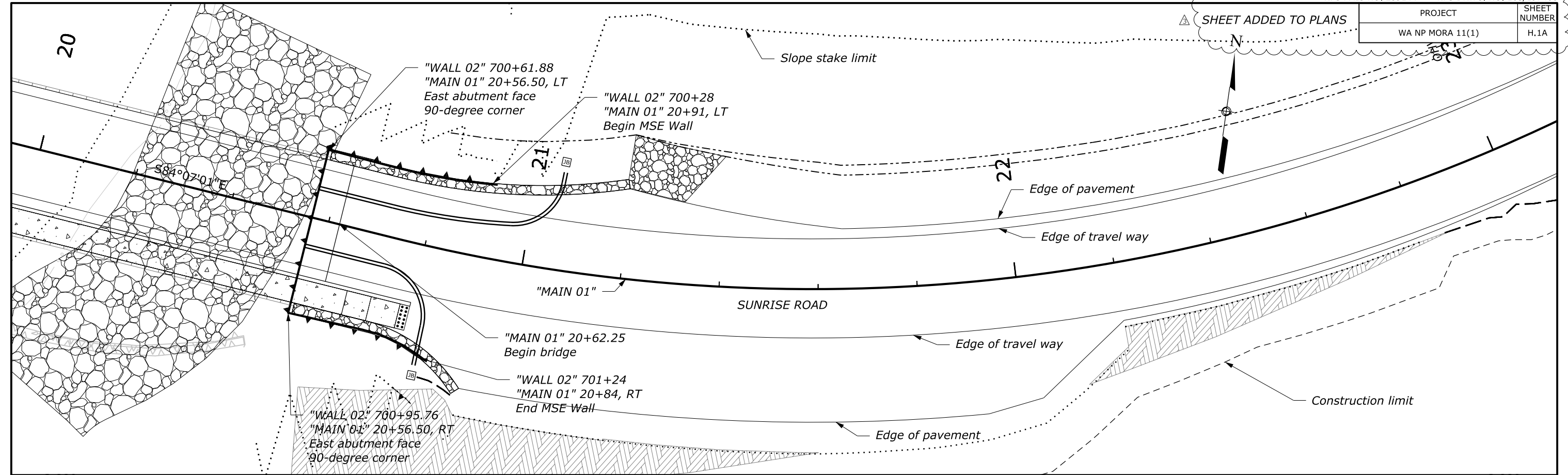
- [1] Contractor design to determine top trim or nesting in design to match the roadway grade.
- [2] Wall panel layout and steps are conceptual. Select and design the final wall system according to Sections 255 and 257.
- [3] Simulated stone masonry surface treatment or Class B masonry, rock face finish for the MSE wall is measured up the wingwall joint lines.
- [4] See S Sheets for Simulated stone masonry surface treatment or Class B masonry, rock face finish quantities associated with the abutment wall.

△ Revised by Amendment A003

**MSE WALL PROFILE  
WEST ABUTMENT**

△ SHEET ADDED TO PLANS

PROJECT	SHEET NUMBER
WA NP MORA 11(1)	H.1A



c:\pwwork\w\10521509\mora11-1\_pln\_h.1.dgn [MSE Wall Profile Abutment 2 (Sheet)] 8 June 2026 1:28 PM

FRYINGPAN CREEK

**FOOTNOTE:**

- [1] Contractor design to determine top trim or nesting in design to match the roadway grade.
- [2] Wall panel layout and steps are conceptual. Select and design the final wall system according to Sections 255 and 257.
- [3] Simulated stone masonry surface treatment or Class B masonry, rock face finish for the MSE wall is measured up the wingwall joint lines.
- [4] See S Sheets for Simulated stone masonry surface treatment or Class B masonry, rock face finish quantities associated with the abutment wall.

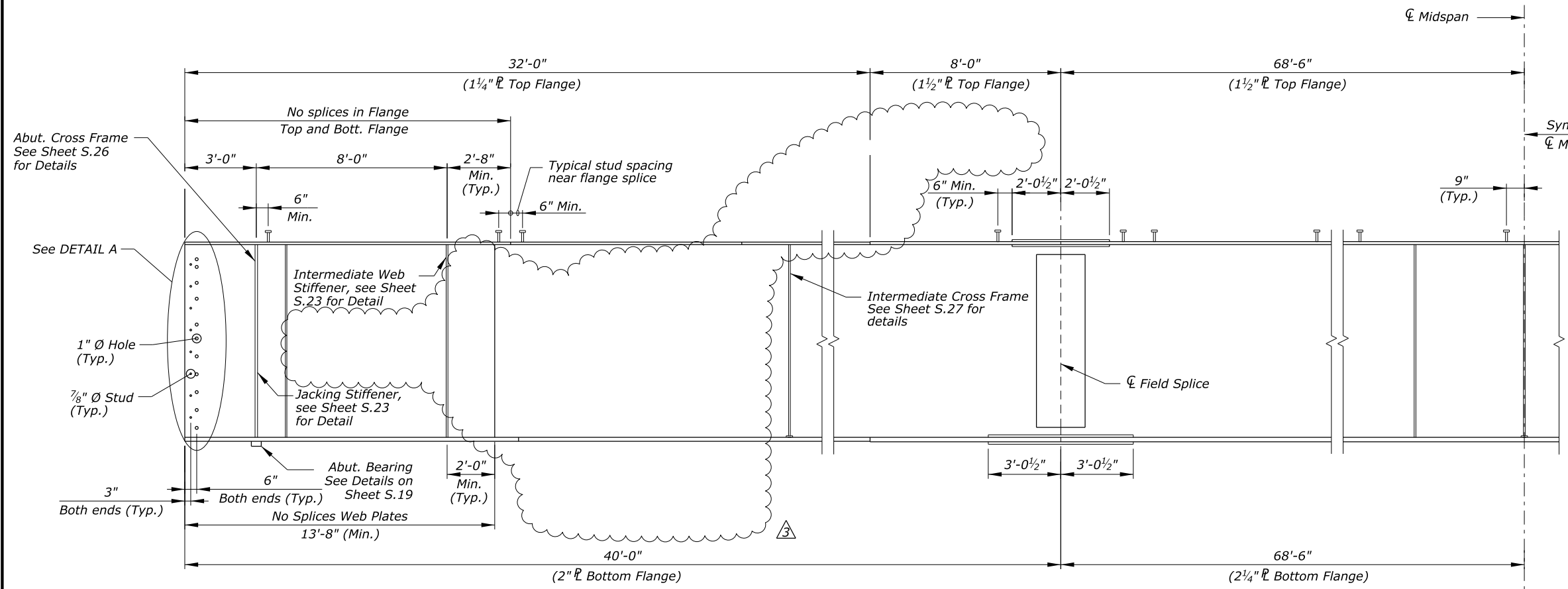
△ Revised by Amendment A003

**MSE WALL PROFILE  
EAST ABUTMENT**



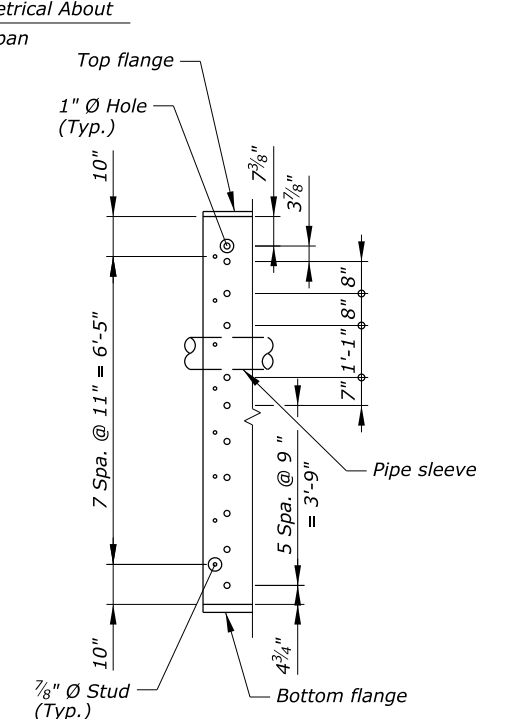
STATE	PROJECT	SHEET NUMBER
WA	NP MORA 11(1)	S.22

ACTUAL FILE:S.22\_MORA 11(1)\_GIRDER DET-1.DGN

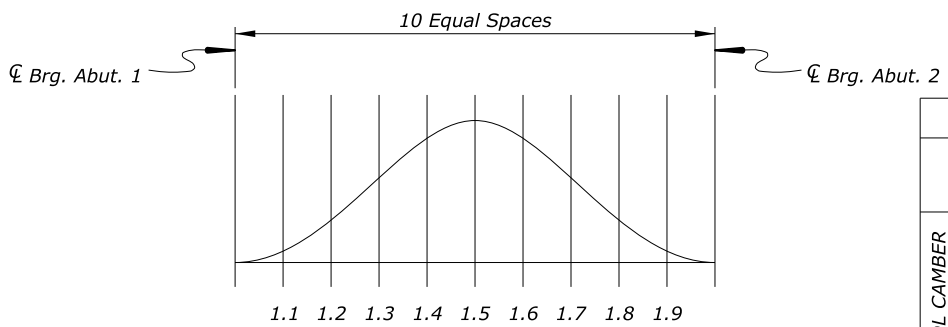


**TYPICAL STEEL GIRDER ELEVATION**  
(Half Showing)

- Note:
- See sheet S.20 and S.21 for field splice, web stiffener, and diaphragm locations.
  - Adjust shear studs to avoid conflict with the 8" pipe sleeve.



**DETAIL A**

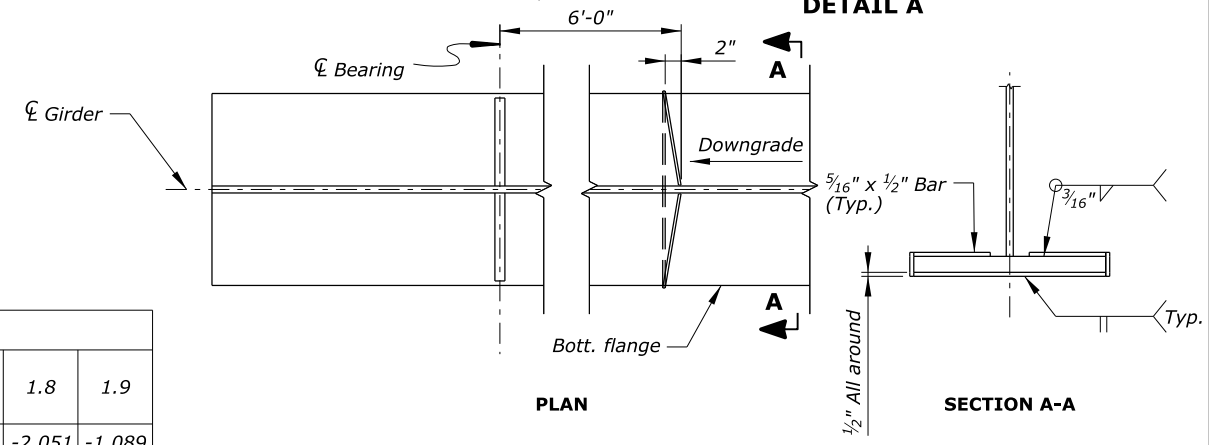


**CAMBER DIAGRAM**  
No Scale

		CAMBER TABLE								
		ORDINATES (inches)								
		1.1	1.2	1.3	1.4	1.5	1.6	1.7	1.8	1.9
DL CAMBER ALL GIRDERS	STL. DEFL.	-1.089	-2.051	-2.802	-3.278	-3.442	-3.278	-2.802	-2.051	-1.089
	CONC. DEFL.	-2.326	-4.301	-5.804	-6.743	-7.063	-6.743	-5.804	-4.301	-2.326
	SUPER DL DEFL.	-0.488	-0.918	-1.252	-1.464	-1.537	-1.464	-1.252	-0.918	-0.488
	TOTAL CAMBER	-3.903	-7.271	-9.858	-11.486	-12.041	-11.486	-9.858	-7.271	-3.903

- Camber Table Legends:**
- STL. DEFL. = Camber due to structural steel deflection.
  - CONC. DEFL. = Camber due to concrete slab deflection and estimated shrinkage.
  - SUPER DL DEFL. = Camber due to superimposed dead load deflections (bridge rails, wearing & future wearing surface, future utilities, and sidewalk).
  - TOTAL CAMBER = STL. DEFL. + CONC. DEFL. + SUPER DL DEFL.

- Camber Note:**
- Camber due to fabrication tolerance is not included in the camber table.
  - Follow AASHTO/AWS D1.5M/D1.5 when calculating camber tolerance during fabrication.



**DRIP PLATE DETAILS EXTERIOR GIRDERS**  
No Scale

U.S. DEPARTMENT OF TRANSPORTATION  
FEDERAL HIGHWAY ADMINISTRATION  
WESTERN FEDERAL LANDS HIGHWAY DIVISION  
MOUNT RAINIER NATIONAL PARK  
FRYINGPAN CREEK BRIDGE  
GIRDER DETAILS - 1

NO.	DATE	BY	REVISIONS	NO.	DATE	BY	REVISIONS	DESIGNED BY	DRAWN BY	CHECKED BY	SCALE	PROJECT TEAM LEADER	BRIDGE DRAWING	DATE	DRAWING NO.
003	04/07/26	SKL	Welding updates					Y.QI	T. Pham	P. Clark	No Scale	B. Oltmann	22 of 46	April 2026	RG3283-V

\$\$\$\$\$DATE\$\$\$\$\$

