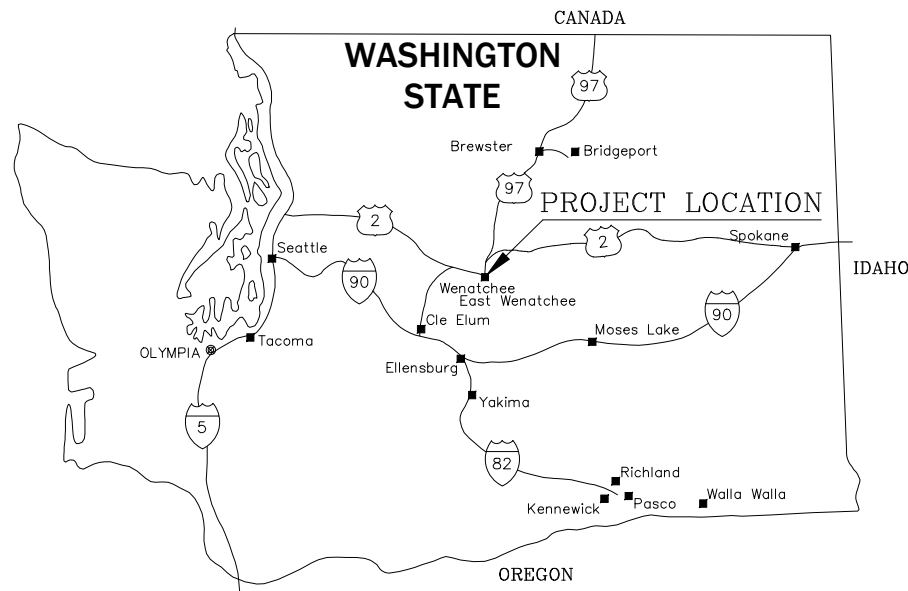


PROJECT PLANS

City of Wenatchee Project 2606 4 MG TEMPORARY REPAIRS



HORIZONTAL: NAD 83 WASHINGTON STATE PLANE NORTH ZONE
VERTICAL: NAVD 88 (GEOID 12B)



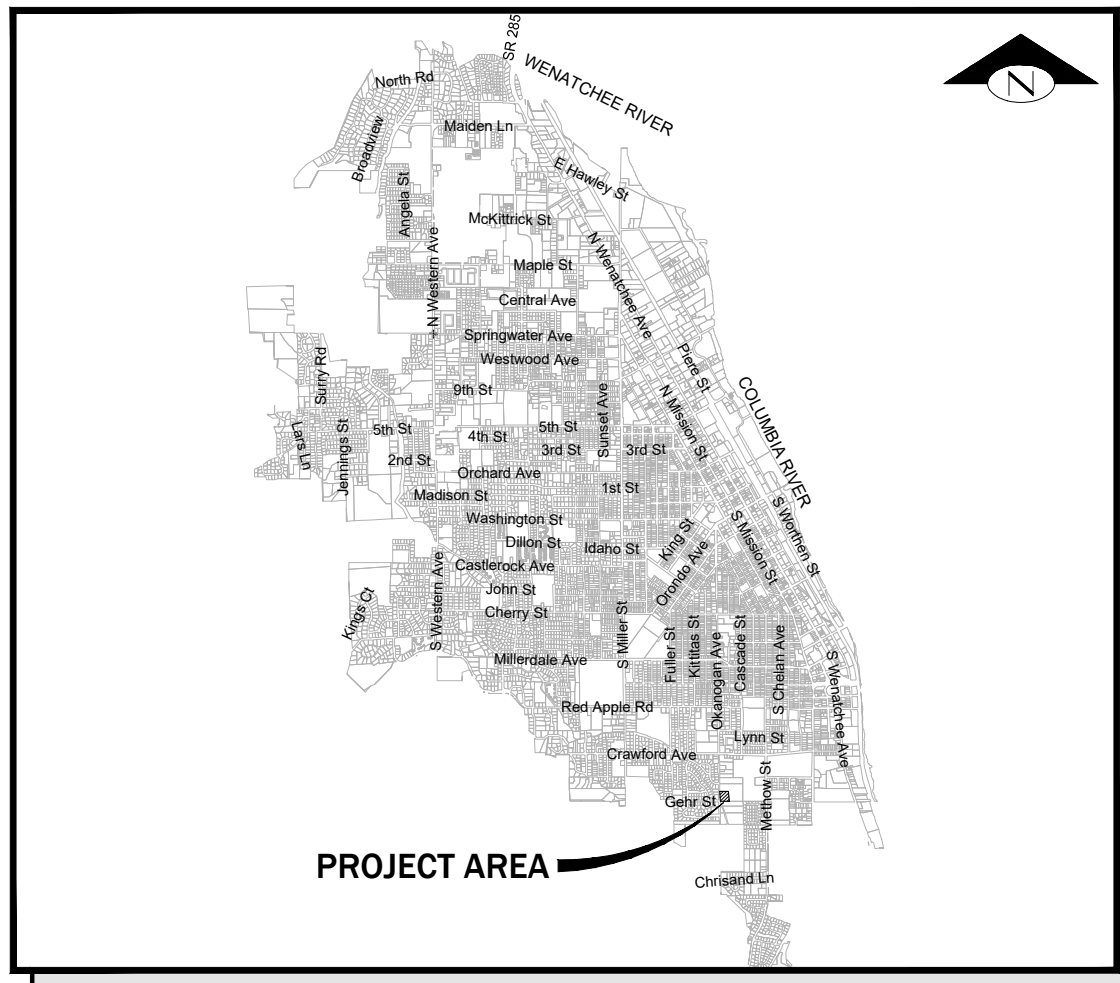
UTILITIES CONTACT LIST – UPDATED 4/23/26			
AGENCY	CONTACT	PHONE	EMAIL
ZIPLY	SHAWN MCGRAIL	(509) 761-0682-5352	SHAWN.MCGRAIL@ZIPLY.COM
	ENGINEER- JAN DAVIS	(509) 670-0497	JAN.DAVIES1@ZIPLY.COM
CHARTER/SPECTRUM	MICAH TEETERS	(509) 692-0835	MICAH.TEETERS@CHARTER.COM
	CONSTRUCTION MGR.: JEFF BOREN		JEFFREY.BOREN@CHARTER.COM
	CONSTRUCTION COORDINATOR: TIM EDINGTON	(315) 345- 5517	TIM.EDINGTON@CHARTER.COM
CASCADE NATURAL GAS	(MAIN) JAMES HOBBS	(360) 982-1313	JAMES.HOBBS@CNGC.COM
	(LOCAL) WYATT ZOLLINGER	(509) 607-6133	WYATT.ZOLLINGER@CNGC.COM
	FIELD OPERATIONS SUPERVISOR SAM GRANT	(509) 750-4269	SAM.GRANT@CNGC.COM
CHELAN COUNTY PUD (WATER)	ADAM NEALY	(509) 661-4494	ADAM.NEALY@CHELANPUD.ORG
CHELAN COUNTY PUD (POWER)	PRESTON SILLITO	(509) 661-4267	PRESTON.SILLITO@CHELANPU.ORG
WENATCHEE RECLAMATION DISTRICT	ALICE MAYER	(509) 663-0002	AMEYER@WRDH2O.COM
	WAYLON MARSHALL	(509) 421-1707	WMARSHALL@WRDH2O.COM
CITY SIGN & LIGHTING	JOSH WINN		
CITY – UTILITIES MANAGER	TERRY O'KEEFE	(509) 888 –3230	TOKEEFE@WENATCHEEWA.GOV
CITY WATER	WILL WEEMS	(509) 888-3222	WWEEMS@WENATCHEEWA.GOV
CITY SEWER/STORMWATER	JOSHUA ELIAS	(509) 888-3291	JELIAS@WENATCHEEWA.GOV

SHEET INDEX		
COVER SHEET	C-0	1
EXISTING SITE	C-1	2
ASBUILTS - ROOF PLAN	CA-1	3
ASBUILTS - FLOOR PLAN	CA-2	4
ASBUILTS - FOOTINGS & UNDERDRAIN	CA-3	5
ASBUILTS - CROSS-SECTIONS	CA-4	6
ASBUILTS - WALL & COLUMN DETAILS	CA-5	7
ASBUILTS - WALL DETAILS	CA-6	8
ASBUILTS - DRAINAGE DETAILS	CA-7	9
ASBUILTS - INLET/OUTLET DETAILS	CA-8	10
REPAIR DETAILS - ROOF & CEILING	CD-1	11
REPAIR DETAILS - BEAM & COLUMN	CD-2	12
REPAIR DETAILS - WALL & FLOOR	CD-3	13
REPAIR DETAILS - JOINTS	CD-4	14

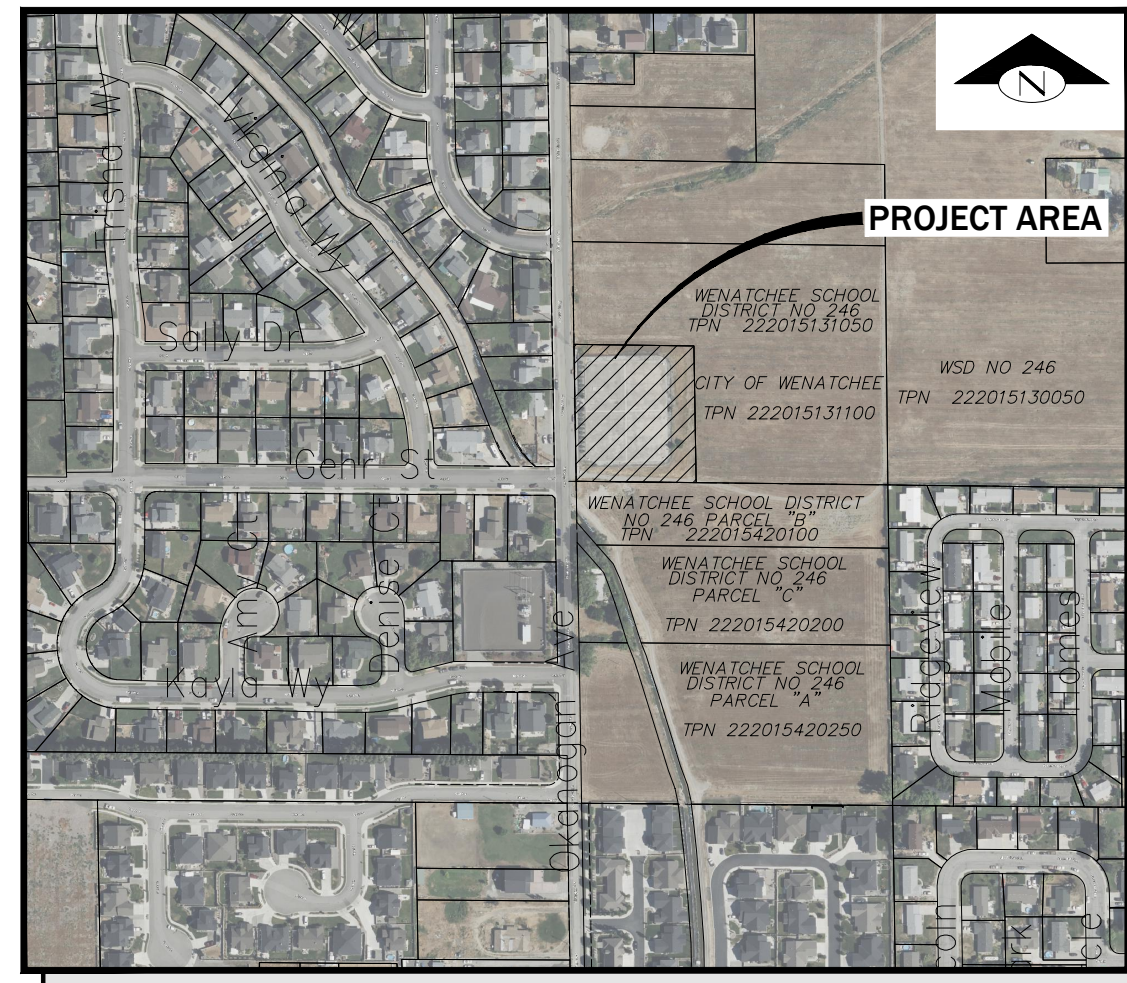
**CPN 2606 -
4MG TEMPORARY REPAIRS
COVER SHEET**



SCALE:	DESIGNED	DRAWN	REVISIONS
	JJ	NP	
DATE DRAWN	CHECKED	DATE APPROVED	
04.27.2026	MP	05.08.2026	
APPROVED BY	DRAWING NAME		
SS	C-0.dwg		
PROJECT NO. 2002006515			
C-0			
SHEET	OF		
1	14		

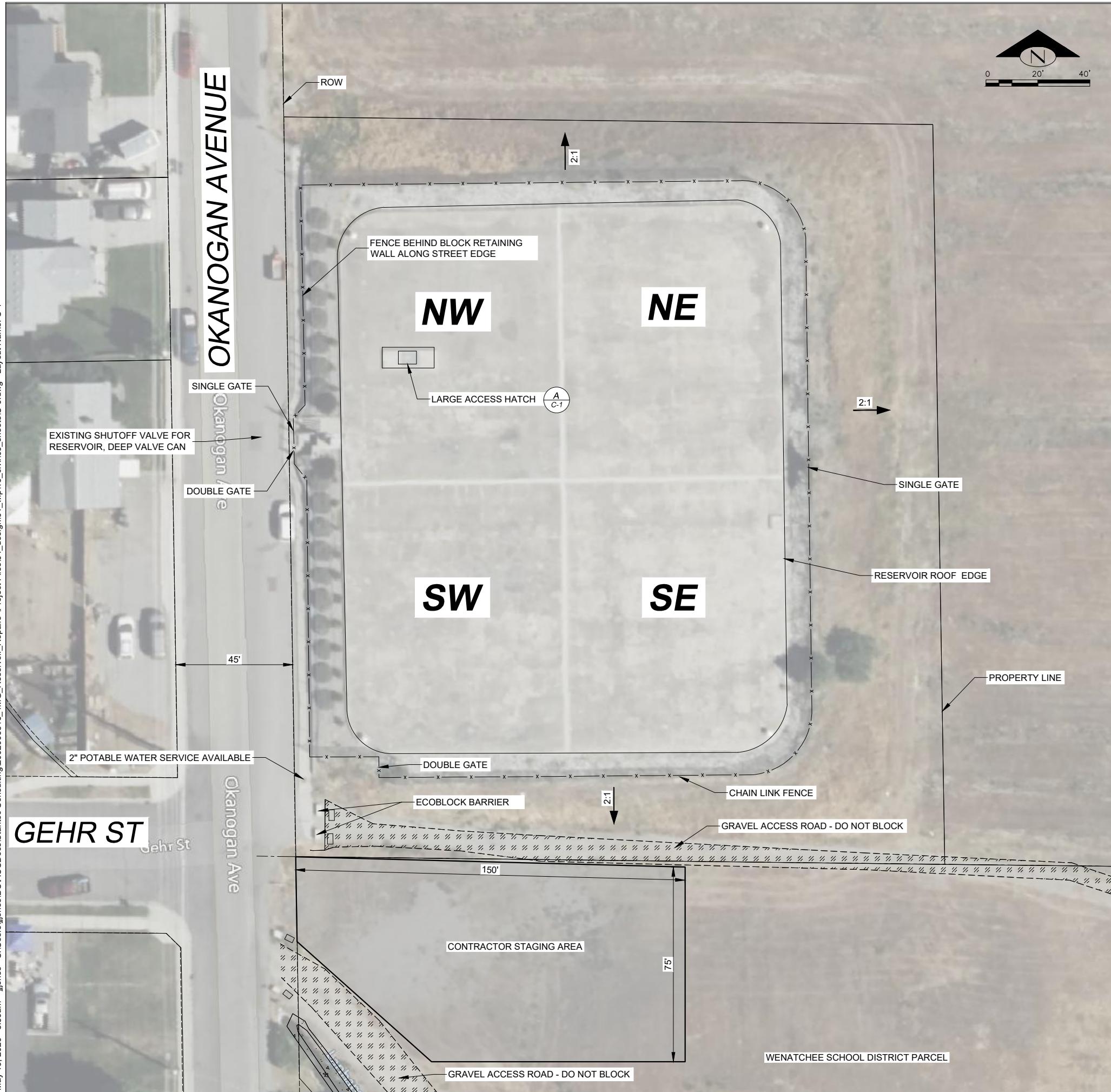


VICINITY MAP



SITE PLAN

May 19, 2026 - 8:59am jones C:\Users\jjones\Documents\Stantec Consulting\2002006516_4MG_Reservoir_Repairs\Project Files\04_design\01_wip\16_civil\06_sheets\C-0.dwg Layout Name: C-1

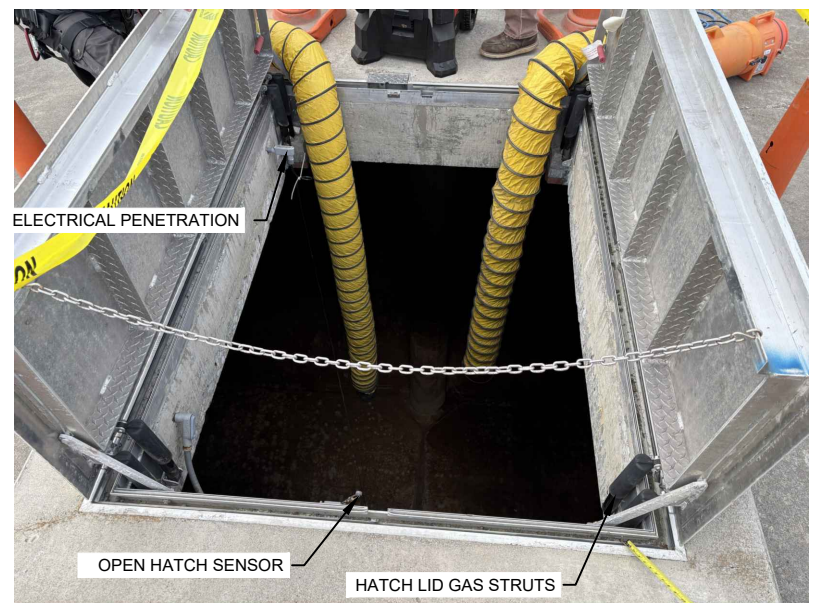


GENERAL NOTES:

1. CONTRACTOR TO RESTORE DISTURBED AREAS (FENCING, LANDSCAPING, ETC) TO PRE-EXISTING CONDITION OR BETTER.
2. ALL UNCLEAR AND/OR MISSING DETAILS SHALL BE BROUGHT TO THE ENGINEER'S ATTENTION BEFORE PROCEEDING WITH CONSTRUCTION.
3. EXISTING STRUCTURE'S CONDITIONS (DIMENSIONS, DETAIL LOCATIONS, ELEVATIONS, ETC.) ARE TO BE FIELD VERIFIED PRIOR TO CONSTRUCTION. THE ENGINEER MUST BE NOTIFIED IMMEDIATELY IF ANY CONFLICTS OCCUR BETWEEN EXISTING CONDITIONS AND NEW CONSTRUCTION.
4. CONTRACTOR SHALL PREPARE TRAFFIC CONTROL PLAN AND PERMITTING TO WORK WITHIN ROW FOR USE OF CRANE. ROAD OR LANE CLOSURES LIMITED TO A SINGLE DAY DURATION.
5. CONTRACTOR MAY NEED TO COORDINATE ACCESS TO SITE WITH ROUNDABOUT CONSTRUCTION AT OKANAGON AND CRAWFORD.
6. CONTRACTOR MAY REMOVE SECTIONS OF EXISTING FENCING. CONTRACTOR SHALL MAINTAIN TEMPORARY CONSTRUCTION CHAIN LINK FENCING FOR ANY SECTIONS OF MISSING PERIMETER FENCING WHILE SITE IS NOT BEING ACTIVELY WORKED.
7. CITY OBTAINED A TEMPORARY CONSTRUCTION EASEMENT WITH WENATCHEE SCHOOL DISTRICT NO. 246, SIGNED MAY 1, 2026, FOR CONTRACTOR STAGING AREA AS SHOWN.

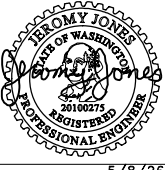
ABBREVIATIONS:

- E EXISTING
- LF LINEAR FEET
- ROW RIGHT-OF-WAY
- SPEC SPECIFICATION
- SF SQUARE FOOT
- TYP TYPICAL



NOTE: LARGE ACCESS HATCH ROUGH OPENING IS 60"X84". OPENING CORNERS OBSTRUCTED BY EXISTING FEATURES, SEE GENERAL NOTE 3.

(A) LARGE ACCESS HATCH
C-1



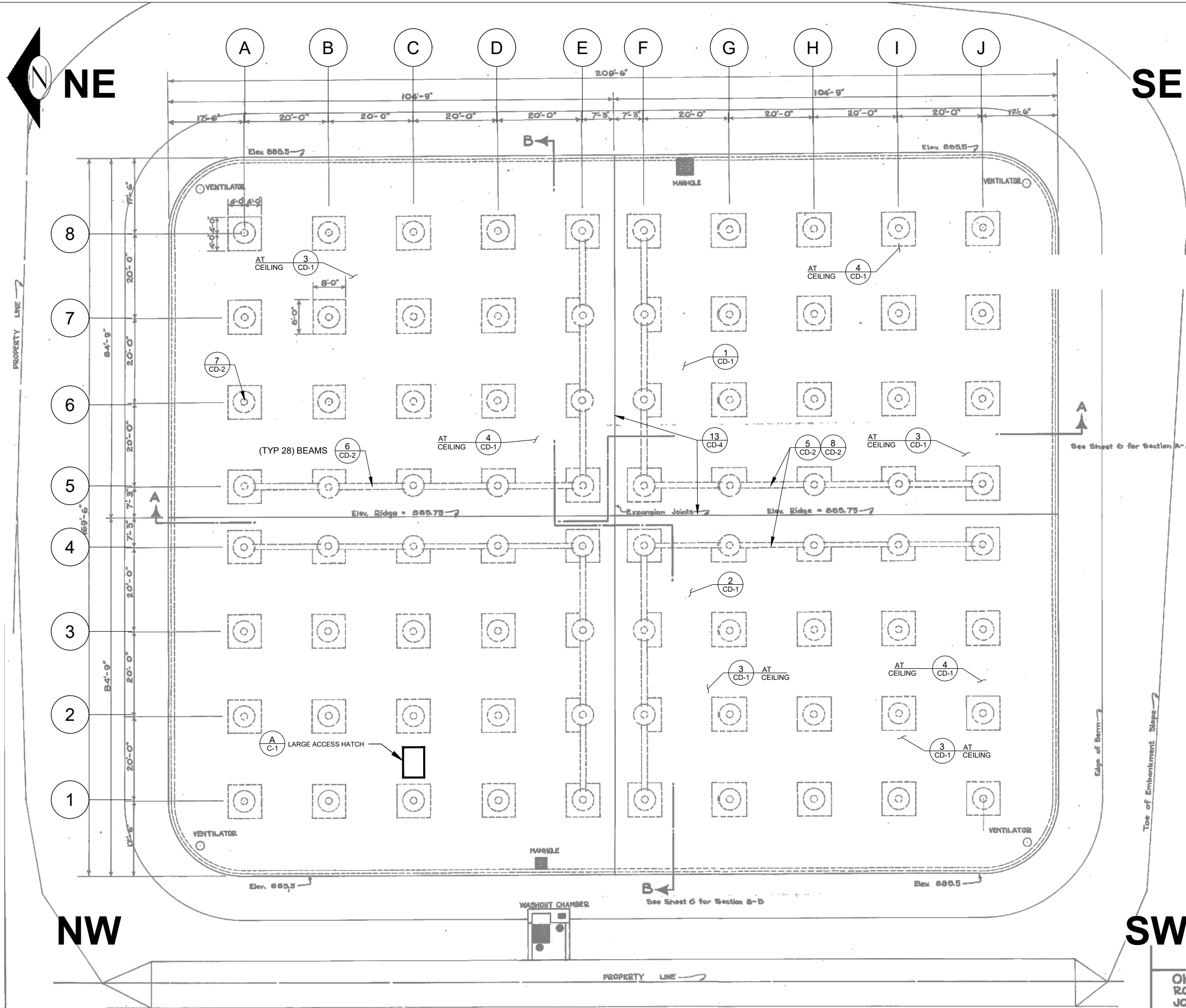
5/8/26

CPN 2606 - 4MG TEMPORARY REPAIRS EXISTING SITE PLAN



DATE DRAWN	04.27.2026	REVISIONS	GENERAL NOTE 7
CHECKED	MP	DESIGNED	JJ
DATE APPROVED	05.08.2026	APPROVED BY	SS
DRAWN	NP	DRAWING NAME	C-0.dwg
PROJECT NO.	2002006515		
SHEET	2	OF	14

May 08, 2026 - 11:13am ijones C:\Users\ijones\AppData\Local\Temp\AcPublish_33980\CA-1.dwg Layout Name: CA-1



SHEET NOTES:

- 1. ASBUILTS WERE PREPARED BY OTHERS AND ASSUMED RELIABLE. STANTEC CANNOT AND DOES NOT WARRANT THEIR ACCURACY.



5/8/26

**CPN 2606 -
4MG TEMPORARY REPAIRS
ASBUILTS - ROOF PLAN**

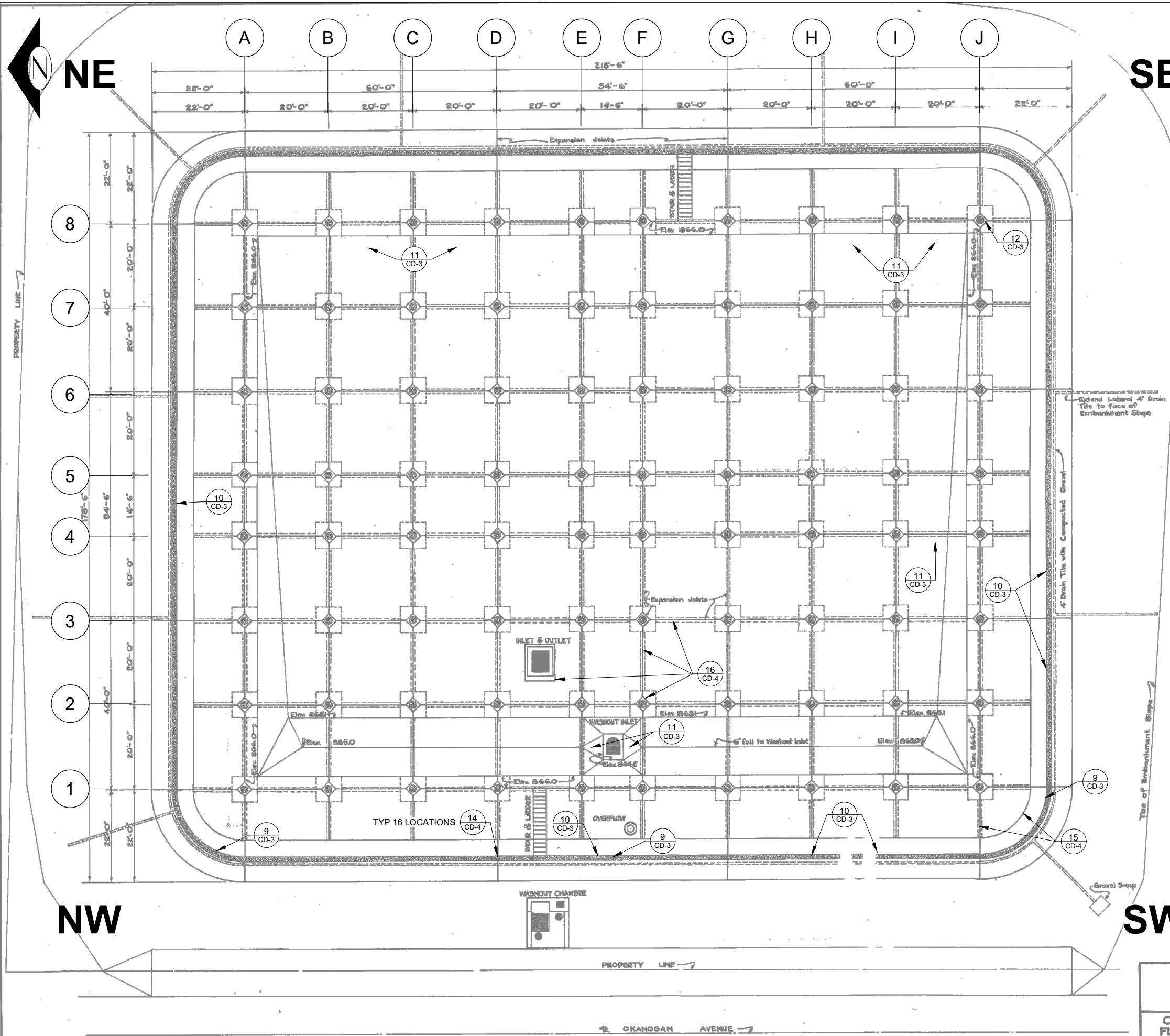


SCALE:	DESIGNED	DRAWN	APPROVED BY	DRAWING NAME
	JJ	NP	SS	CA-1.dwg
DATE DRAWN	CHECKED	DATE APPROVED	REVISIONS	
04.27.2026	MP	05.08.2026		
PROJECT NO. 2002006515				
CA-1				
SHEET 3 OF 14				

**CITY OF WENATCHEE
ENGINEERING DEPARTMENT**

**OKANOGAN AVENUE RESERVOIR
ROOF PLAN SHOWING EXPANSION
JOINTS AND PITCH**

May 08, 2026 - 11:13am ijones C:\Users\ijones\AppData\Local\Temp\AcPublish_33980\CA-1.dwg Layout Name: CA-2



SHEET NOTES:

- ASBUITS WERE PREPARED BY OTHERS AND ASSUMED RELIABLE. STANTEC CANNOT AND DOES NOT WARRANT THEIR ACCURACY.



5/8/26

**CPN 2606 -
4MG TEMPORARY REPAIRS
ASBUITS - FLOOR PLAN**



SCALE:	DESIGNED	DRAWN	APPROVED BY	DRAWING NAME
	JJ	NP	SS	CA-1.dwg

DATE DRAWN	REVISIONS
04.27.2026	
CHECKED	
MP	
DATE APPROVED	
05.08.2026	

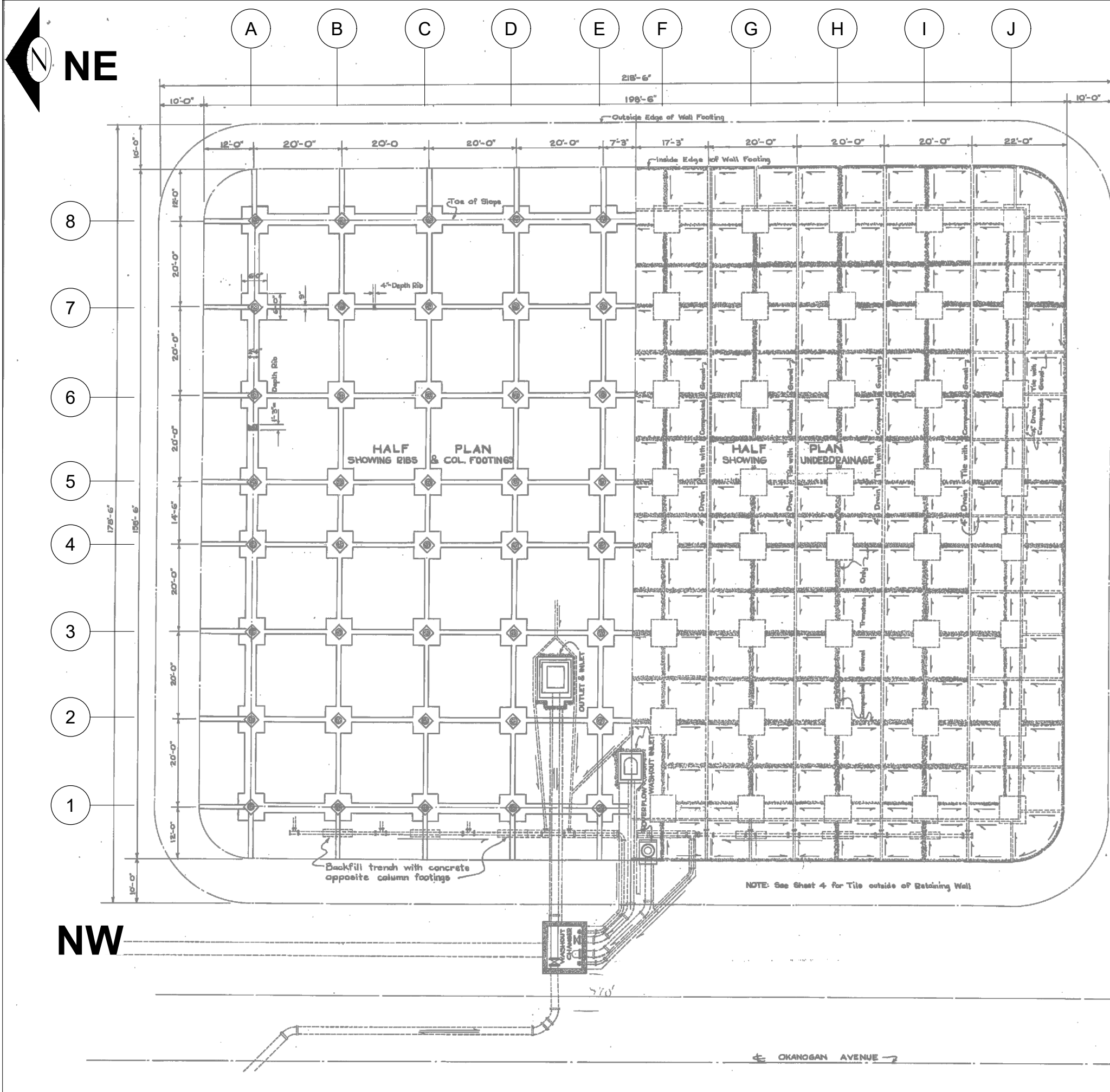
**CITY OF WENATCHEE
ENGINEERING DEPARTMENT**

**OKANOGAN AVENUE RESERVOIR
FLOOR PLAN SHOWING EXPANSION
JOINTS & SIZES OF FLOOR**

PROJECT NO.
2002006515

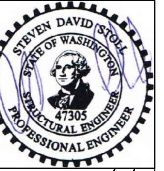
CA-2

SHEET 4 OF 14



SHEET NOTES:

1. ASBULTS WERE PREPARED BY OTHERS AND ASSUMED RELIABLE. STANTEC CANNOT AND DOES NOT WARRANT THEIR ACCURACY.
2. NO REPAIRS SHALL BE DONE THAT COULD DAMAGE OR CLOG THE UNDERDRAIN PIPING SYSTEM.



5/8/26

CPN 2606 -
4MG TEMPORARY REPAIRS
 ASBULTS - FOOTING & UNDERDRAIN



DATE DRAWN	DESIGNED	DRAWN	CHECKED	REVISIONS
04.27.2026	JJ	NP	MP	
				DATE APPROVED
				05.08.2026
				DATE APPROVED
				05.08.2026
				DATE APPROVED
				05.08.2026

SCALE:	PROJECT NO.
DESIGNED JJ	2002006515
DRAWN NP	CA-3
CHECKED MP	SHEET 5
APPROVED BY SS	OF 14
DRAWING NAME CA-1.dwg	

SE

SW

NE

NW

CITY OF WENATCHEE
 ENGINEERING DEPARTMENT
OKANOGAN AVENUE RESERVOIR
 PLAN SHOWING FOOTINGS, PIPE LAYOUT

← OKANOGAN AVENUE →

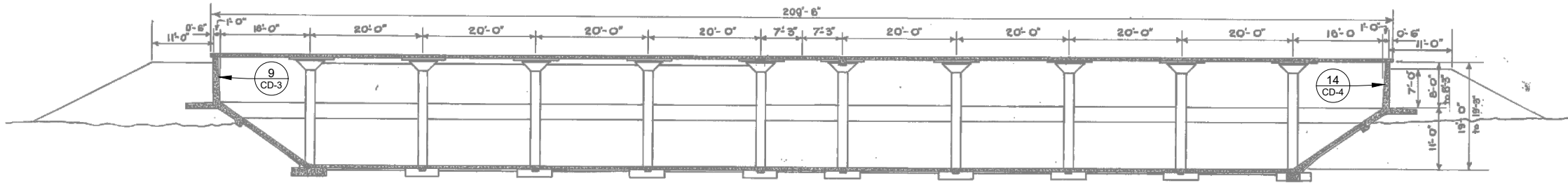
SHEET NOTES:

- ASBULTS WERE PREPARED BY OTHERS AND ASSUMED RELIABLE. STANTEC CANNOT AND DOES NOT WARRANT THEIR ACCURACY.

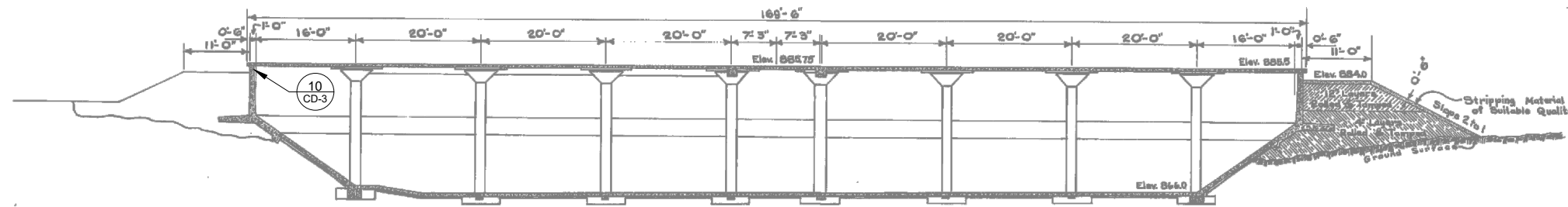


5/8/26

CPN 2606 -
4MG TEMPORARY REPAIRS
ASBULTS - CROSS-SECTIONS



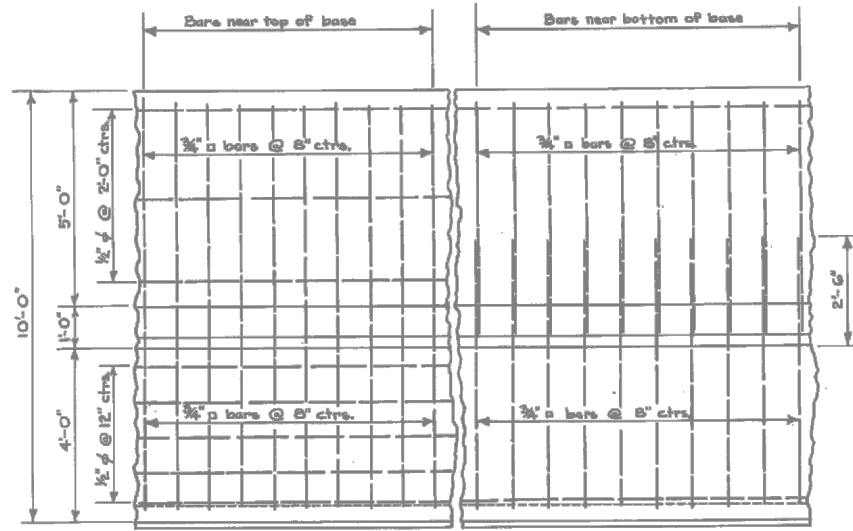
LONGITUDINAL SECTION A-A
See Sheet No. 5 for Section



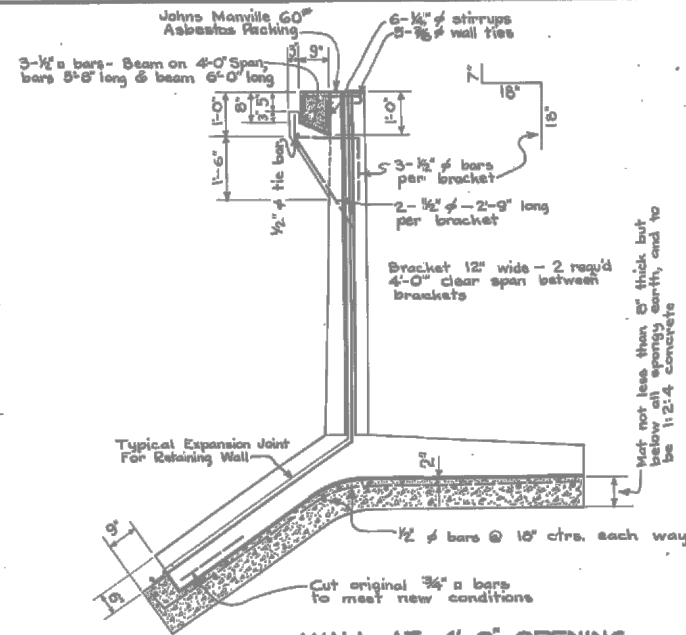
CROSS SECTION B-B
See Sheet No. 5 for Section

CITY OF WENATCHEE
ENGINEERING DEPARTMENT
OKANOGAN AVENUE RESERVOIR
LONGITUDINAL & CROSS-SECTION

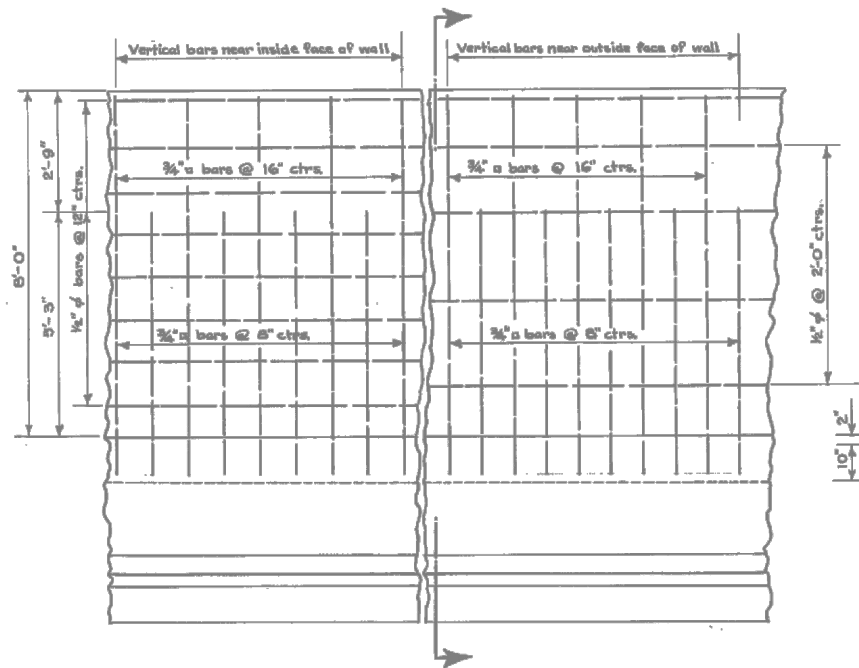
SCALE:	DESIGNED	DRAWN	CHECKED	DATE DRAWN	REVISIONS
JJ	NP	MP	04.27.2026		
SS			05.08.2026		
DRAWING NAME: CA-1.dwg					
PROJECT NO.: 2002006515					
CA-4					
SHEET 6 OF 14					



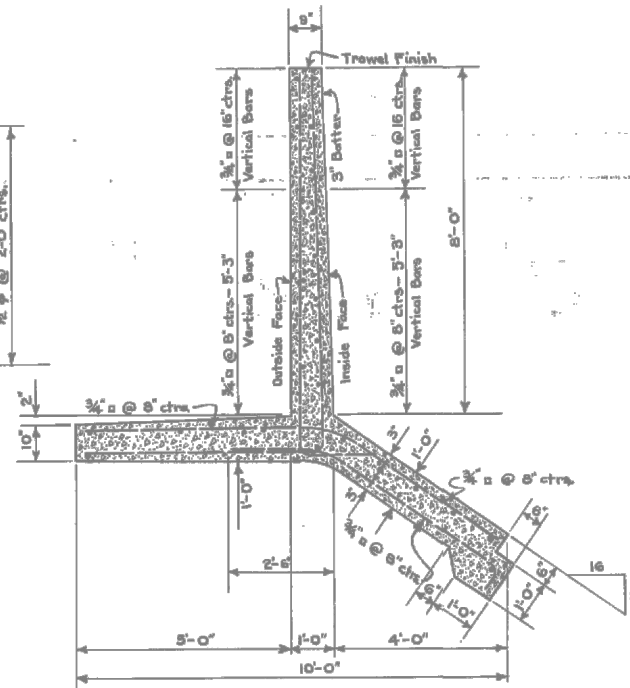
PLAN
Scale 1/2" = 1'-0"



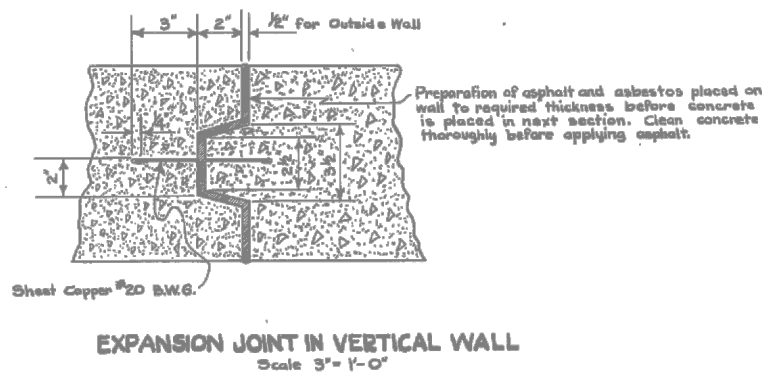
WALL AT 4'-0" OPENING
Scale 1/2" = 1'-0"



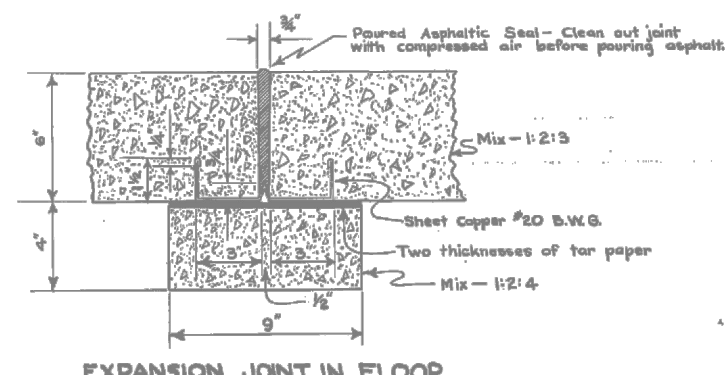
ELEV.-OUTSIDE WALL
Scale 1/2" = 1'-0"



SECTION A-A
Scale 1/2" = 1'-0"



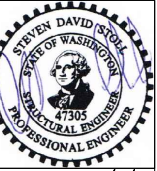
EXPANSION JOINT IN VERTICAL WALL
Scale 3" = 1'-0"



EXPANSION JOINT IN FLOOR

SHEET NOTES:

- ASBULTS WERE PREPARED BY OTHERS AND ASSUMED RELIABLE. STANTEC CANNOT AND DOES NOT WARRANT THEIR ACCURACY.



5/8/26

CPN 2606 -
4MG TEMPORARY REPAIRS
ASBULTS - WALL & JOINT DETAILS

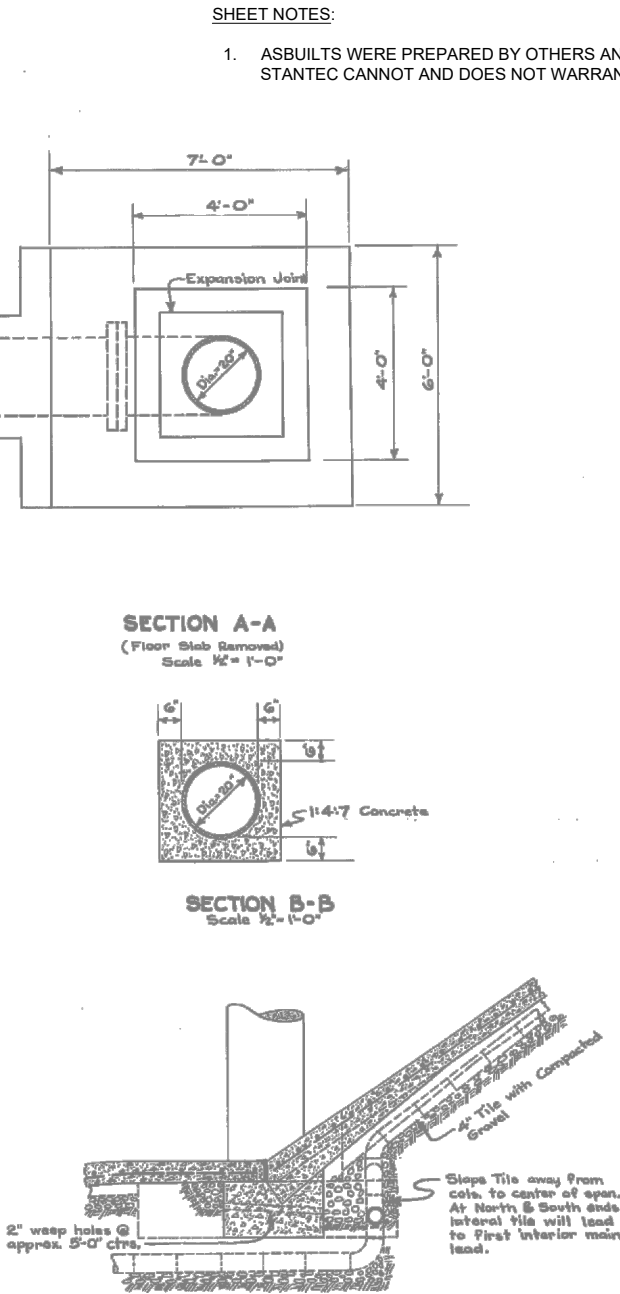
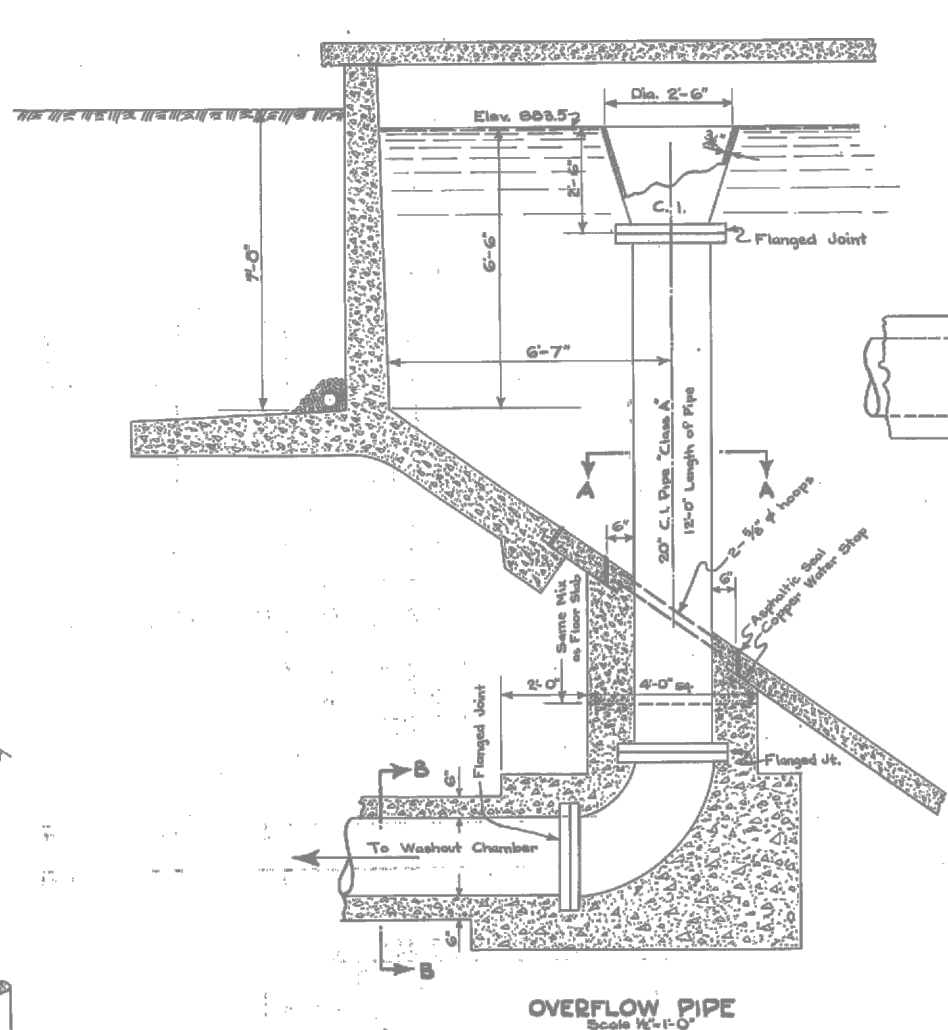
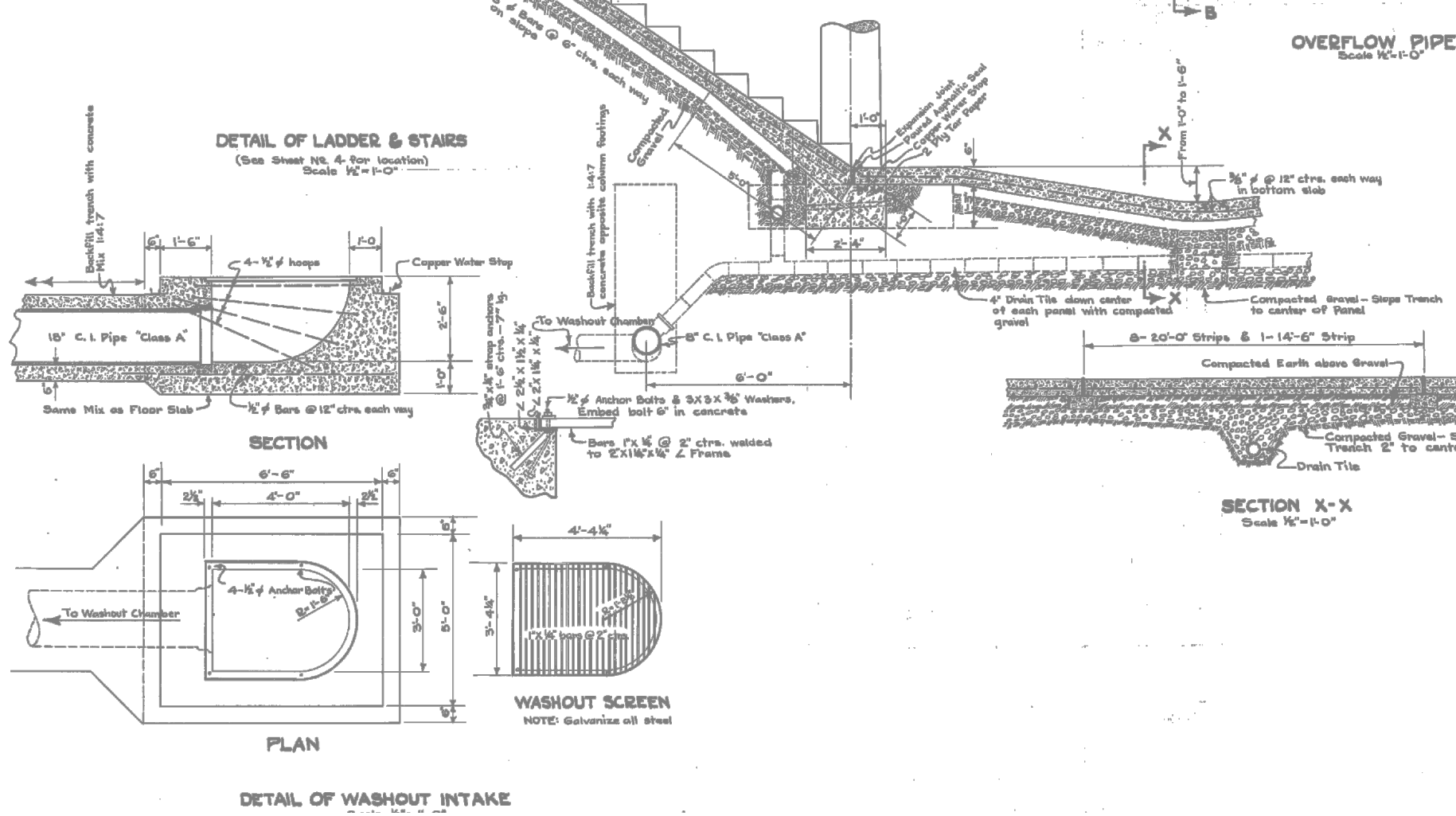
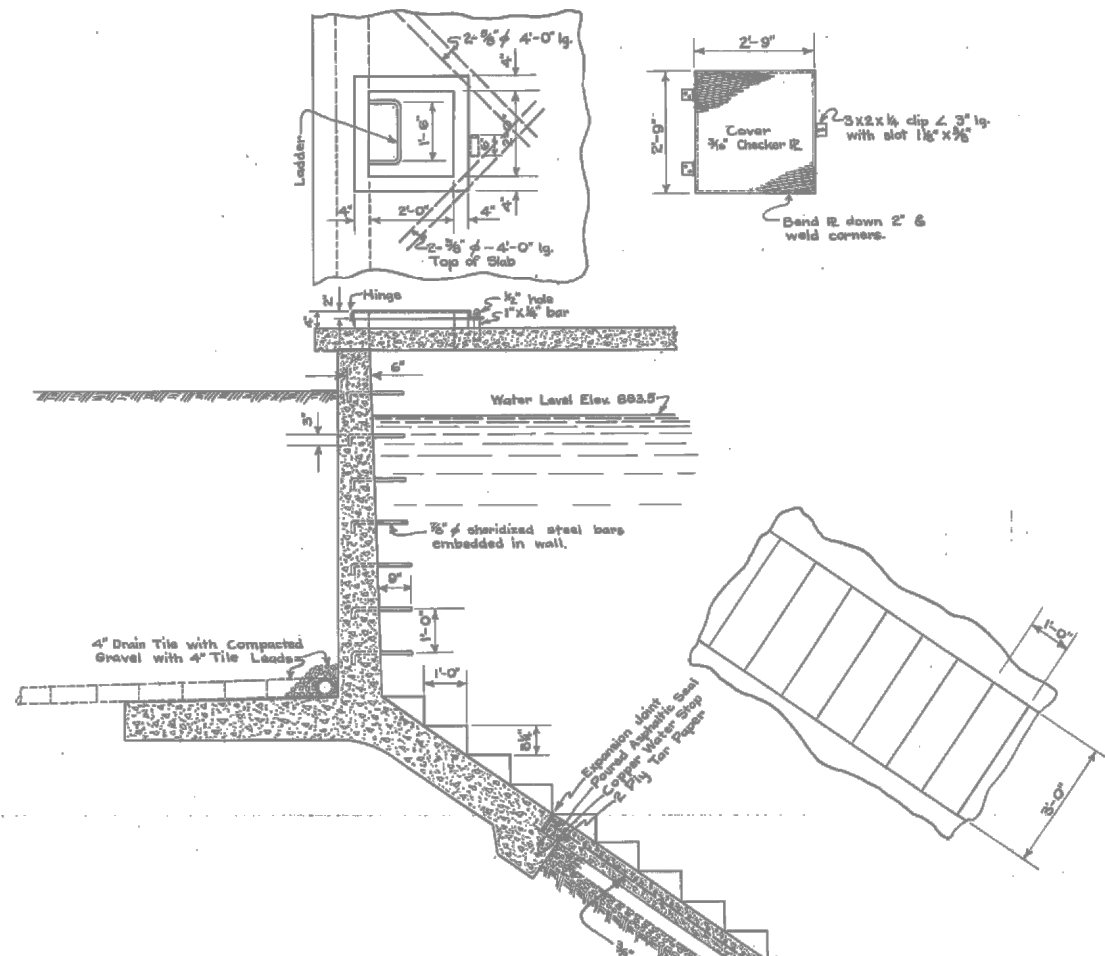


DATE DRAWN	CHECKED	DESIGNED	DRAWN	APPROVED BY	DRAWING NAME
04.27.2026	MP	JJ	NP	SS	CA-1.dwg
DATE APPROVED	APPROVED BY				
05.08.2026	MP				

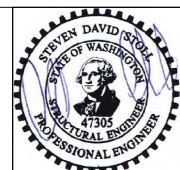
PROJECT NO.	2002006515
CA-6	
SHEET	8
OF	14

CITY OF WENATCHEE
ENGINEERING DEPARTMENT
OKANOGAN AVENUE RESERVOIR
WALL DETAILS

May 08, 2026 - 11:17am jljones C:\Users\jljones\Documents\Stantec\Projects\Reservoir_Repairs\Project Files\04_design\01_wip\16_civil\06_sheets\CA-1.dwg Layout Name: CA-7



SHEET NOTES:
1. ASBUILTS WERE PREPARED BY OTHERS AND ASSUMED RELIABLE. STANTEC CANNOT AND DOES NOT WARRANT THEIR ACCURACY.

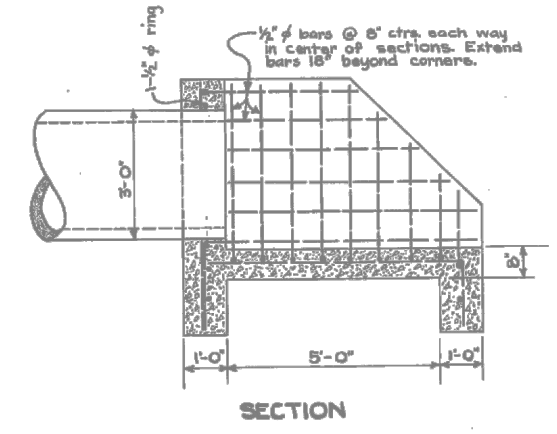
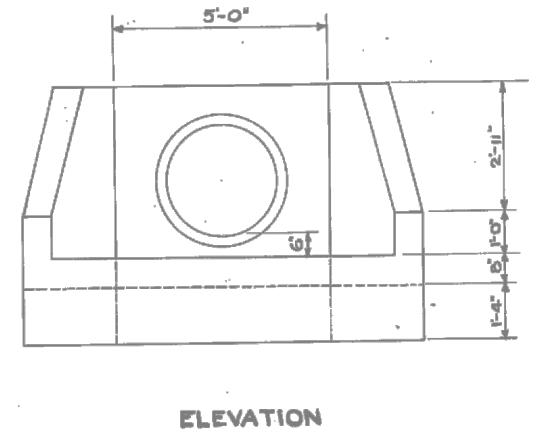
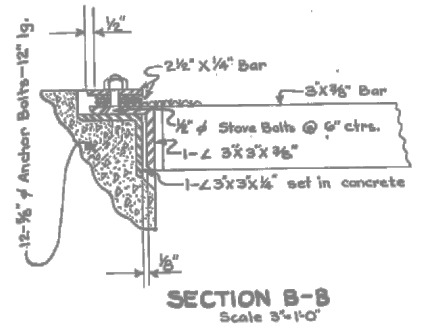
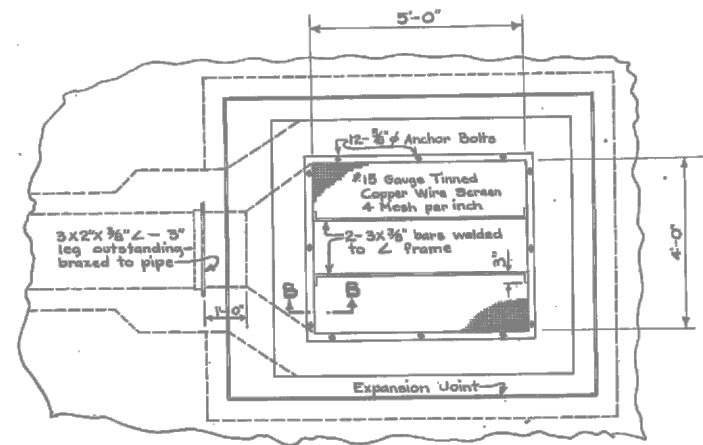


CPN 2606 -
4MG TEMPORARY REPAIRS
ASBUILTS - SECTION & DRAINAGE



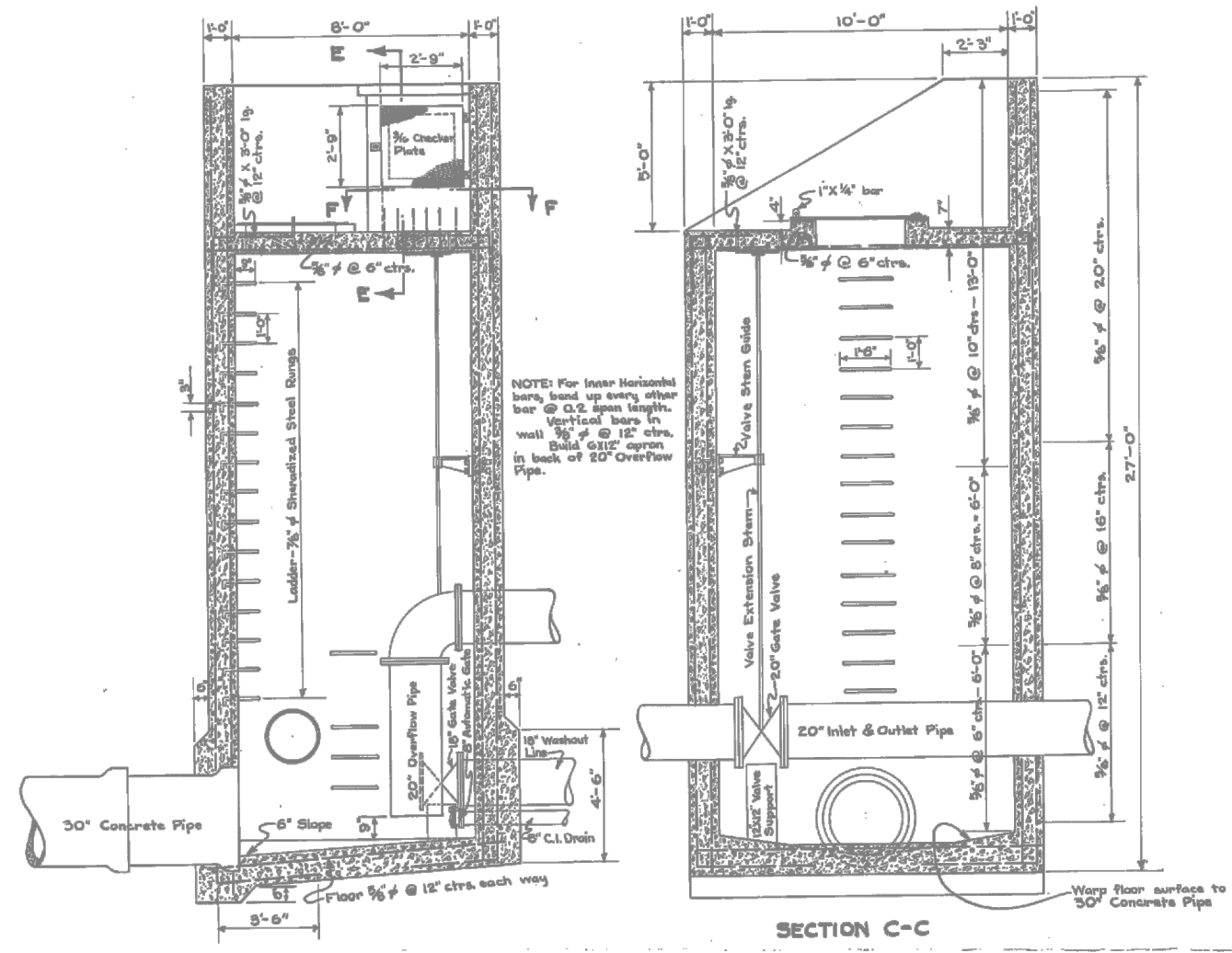
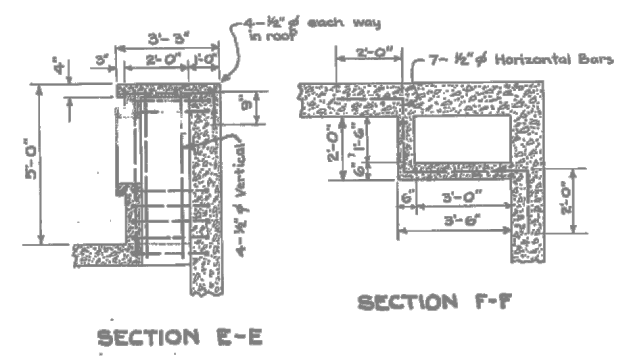
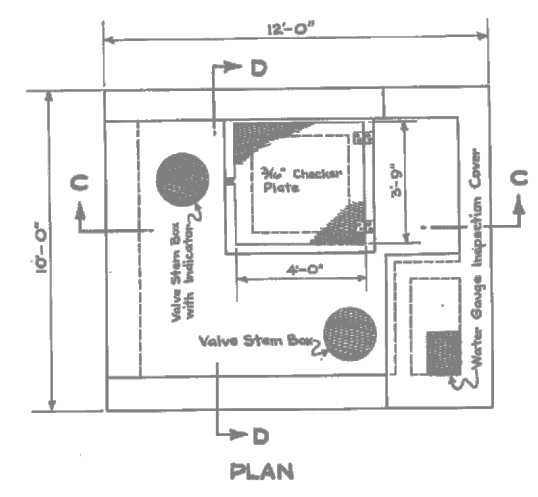
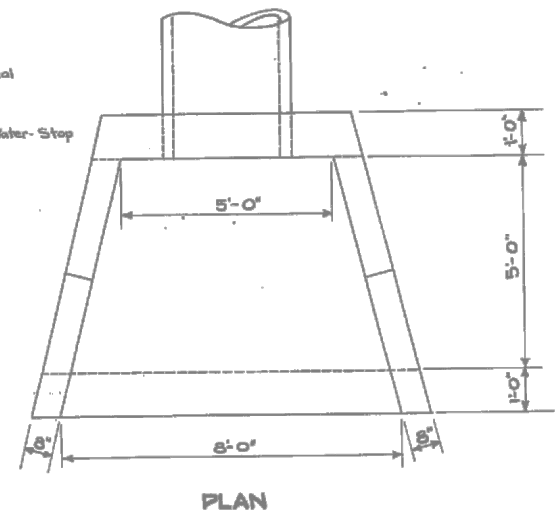
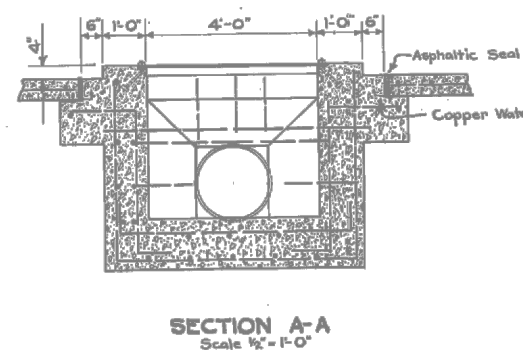
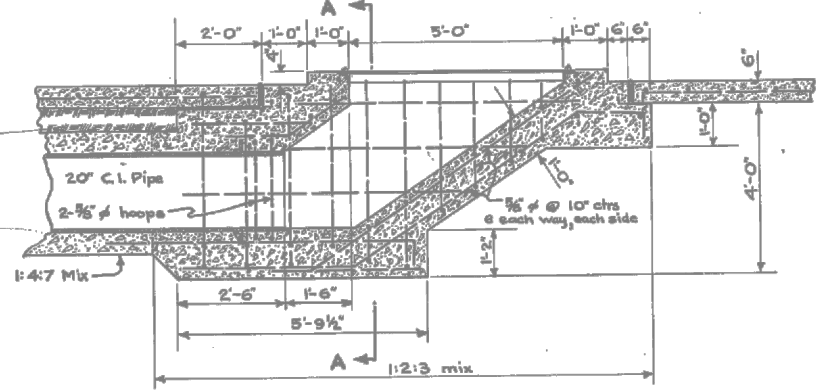
SCALE:	DESIGNED	DRAWN	APPROVED BY	DRAWING NAME
04.27.2026	JJ	NP	SS	CA-1.dwg
CHECKED	MP	DATE APPROVED	05.08.2026	
REVISIONS				
PROJECT NO.	2002006515			
CA-7				
SHEET	9	OF	14	

CITY OF WENATCHEE
ENGINEERING DEPARTMENT
OKANOGAN AVENUE RESERVOIR
DRAINAGE DETAILS



DETAIL OF ENDWALL FOR 30" CONCRETE PIPE
Scale 1/2" = 1'-0"

SHEET NOTES:
1. ASBUILTS WERE PREPARED BY OTHERS AND ASSUMED RELIABLE. STANTEC CANNOT AND DOES NOT WARRANT THEIR ACCURACY.

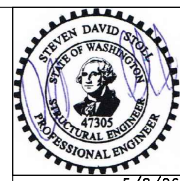


CITY OF WENATCHEE
ENGINEERING DEPARTMENT

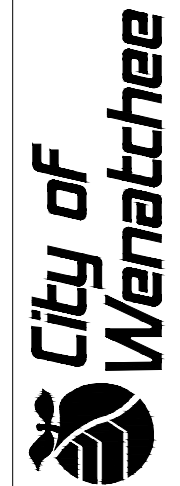
OKANOGAN AVENUE RESERVOIR
WASHOUT CHAMBER OUTLET & INLET
& ENDWALL DETAILS

DATE 8-18-21

SCALE As Shown



CPN 2606 -
4MG TEMPORARY REPAIRS
ASBUILTS - INLET/OUTLET DETAILS



SCALE:	DESIGNED	DRAWN	CHECKED	DATE DRAWN	REVISIONS
	JJ	NP	MP	04.27.2026	
	APPROVED BY			DATE APPROVED	
	SS			05.08.2026	
	DRAWING NAME				
	CA-1.dwg				

PROJECT NO. 2002006515

CA-8

SHEET 10 OF 14

NOTE: THE REINFORCED CONCRETE ROOF IS 6 INCHES THICK WITH AN APPROXIMATE SURFACE AREA OF 36,000 SF

REPAIR TYPE: EXPANDING POLYURETHANE CHEMICAL GROUT, SEE SPECIFICATION 07 14 00 FLUID APPLIED WATERPROOFING

REPAIR MATERIAL: SEALBOSS 1510, SIKAFIX HH PLUS, OR EQUAL

QUADRANT	CRACKING (LF)
NW	280
NE	883
SW	538
SE	805
TOTAL	2,506



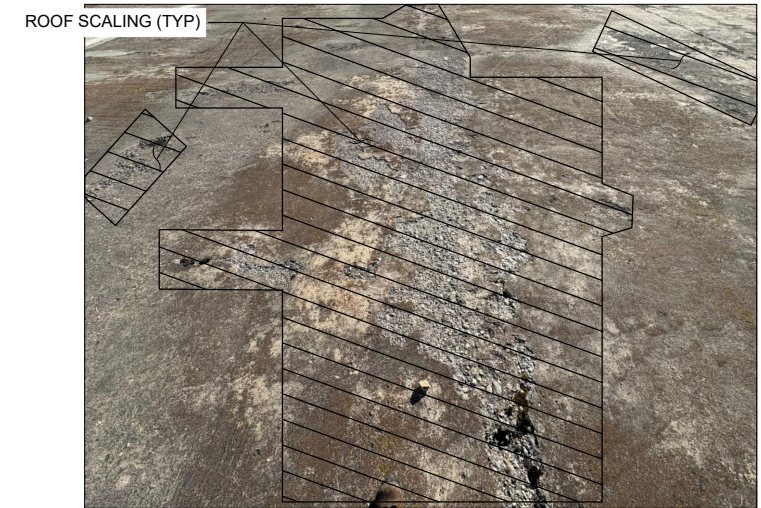
1 ROOF - CRACKING
CA-1

NOTE: ASSUME AVERAGE DEPTH OF 3/4-INCH. THE TOTAL SCALED AREA REPRESENTS APPROXIMATELY 18% OF THE OVERALL ROOF SURFACE.

REPAIR TYPE: CONCRETE TOPPING, SEE SPECIFICATION 03 01 00 MAINTENANCE OF CONCRETE

REPAIR MATERIAL: SIKATOP 111 PLUS OR EQUAL

QUADRANT	SCALING (SF)
NW	633
NE	358
SW	538
SE	4,875
TOTAL	6,404



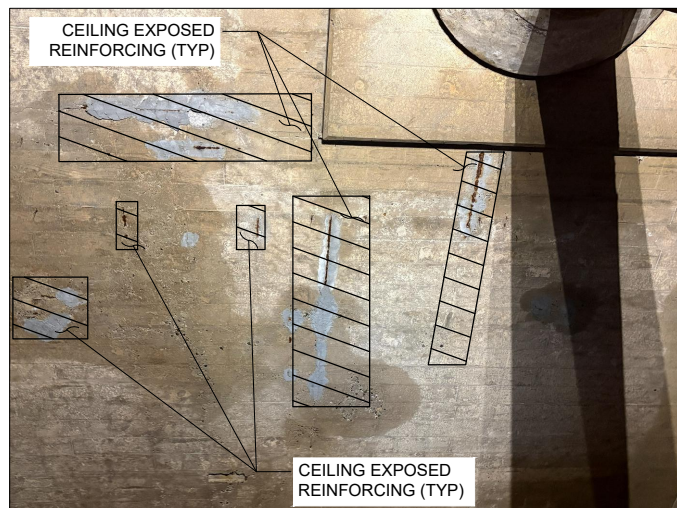
2 ROOF - SCALING
CA-1

NOTE: AREAS OF SPALLING AND EXPOSED REINFORCING, ASSUMING 4 INCHES OF REPAIR DEPTH AND WIDTHS OF APPROXIMATELY 8 INCHES.

REPAIR TYPE: SPALLED AND DELAMINATED CONCRETE REPAIR, SEE SPECIFICATION 03 01 00 MAINTENANCE OF CONCRETE

REPAIR MATERIAL: REPAIR MORTAR - SIKA TOP 111 PLUS OR EQUAL
BONDING AGENT AND ANTI-CORROSION COATING - SIKA ARMATEC-110, EPOCEM, OR EQUAL

QUADRANT	SPALLING (LF)
NW	NONE
NE	7
SW	3
SE	139
TOTAL	149



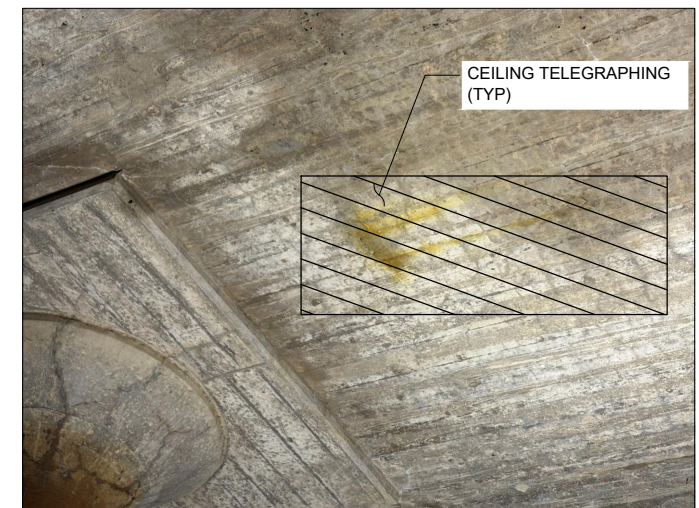
3 CEILING - SPALLING & EXPOSED REINFORCING
CA-1

NOTE: AREAS OF TELEGRAPHING, BASED ON 1 FOOT OF WIDTH.

REPAIR TYPE: SURFACE APPLIED CORROSION INHIBITOR, SEE SPECIFICATION 03 91 13 SURFACE APPLIED CORROSION INHIBITOR

REPAIR MATERIAL: SIKA FERROGARD-903 OR EQUAL

QUADRANT	TELEGRAPHING (SF)
NW	NONE
NE	4
SW	95
SE	2
TOTAL	101



4 CEILING - TELEGRAPHING
CA-1

May 08, 2026 - 11:14am ijones C:\Users\ijones\AppData\Local\Temp\AcPublish_33980\CD-1.dwg Layout Name: CD-1



5/8/26

**CPN 2606 -
4MG TEMPORARY REPAIRS
REPAIR DETAILS - ROOF & CEILING**



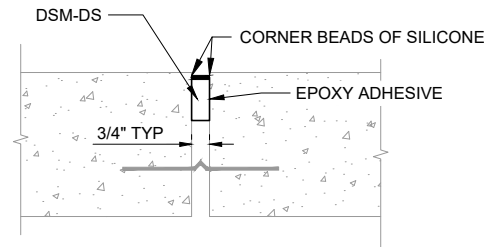
SCALE:	DESIGNED	DRAWN	DATE DRAWN	CHECKED	REVISIONS
	JJ	NP	04.27.2026	MP	
	SS	SS	05.08.2026		
PROJECT NO.				2002006515	
SHEET				OF	
11				14	
DRAWING NAME				CD-1.dwg	

NOTE: REMOVE AND REPLACE EXISTING EXPANSION JOINT COVER AND SEALANT.

REPAIR TYPE: DUAL-FACED SILICONE BELLOWS, SEE SPECIFICATION 07 71 29 MANUFACTURED ROOF EXPANSION JOINT

REPAIR MATERIAL: DSM-DS BY SIKA EMSEAL OR EQUAL

QUANTITY: ROOF EXPANSION JOINT = 380 LF



ROOF JOINT REPAIR

NOTES:

1. REMOVE EXISTING SURFACE SEAL
2. CLEAN SURFACES OF FOREIGN OR LOOSE MATERIAL
3. APPLY EPOXY TO JOINT WALLS
4. INSTALL FOAM LENGTH INTO JOINT
5. INJECT SILICONE SEALANT BAND

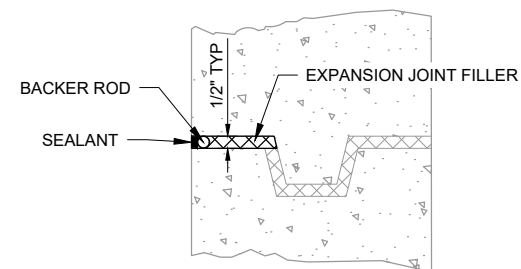


NOTE: VERTICAL WALLS VARY IN THICKNESS FROM 9" THICK AT THE TOP OF THE WALL AND 12" THICK AT THE BOTTOM OF THE WALL. ASSUME AVERAGE REPLACEMENT DEPTH OF 4-INCHES.

REPAIR TYPE: JOINT REPAIR, SEE SPECIFICATION 07 92 13 ELASTOMERIC JOINT SEALANTS

REPAIR MATERIAL: SIKA 2C NS EZ OR EQUAL

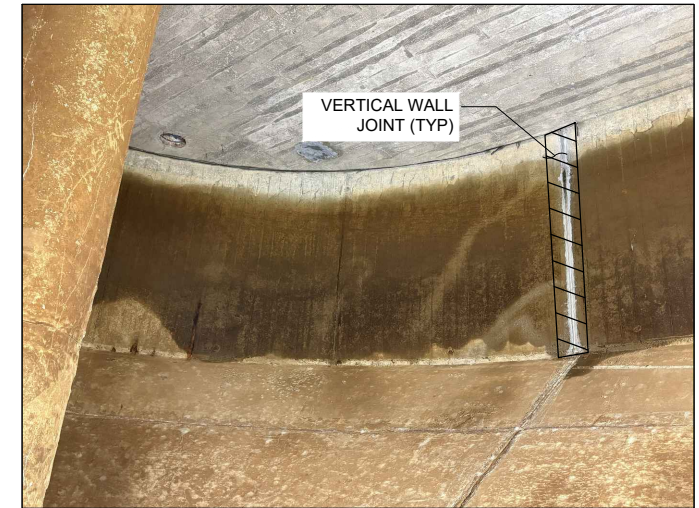
QUANTITY: VERTICAL WALL CONSTRUCTION JOINT = 130 LF



WALL JOINT REPAIR

NOTES:

1. REMOVE EXISTING SEALANT
2. CLEAN SURFACES OF FOREIGN OR LOOSE MATERIAL
3. PRIME SURFACES IF RECOMMENDED
4. INSTALL EXPANSION JOINT FILLER AS NEEDED
5. INSTALL BACKER ROD
6. FILL JOINT WITH SEALANT



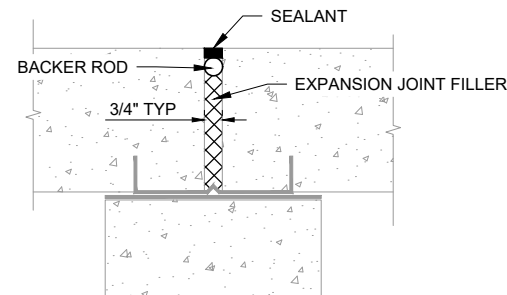
13 EXPANSION JOINT - ROOF
CA-1

NOTE: THE REINFORCED CONCRETE FLOOR SLAB VARIES IN THICKNESS FROM 6" THICK TO 12" THICK DEPENDING ON THE LOCATION ON THE SLAB, WITH THE FOLLOWING REPAIRS IN LINEAL FEET (LF) IN EACH QUADRANT:

REPAIR TYPE: JOINT REPAIR, SEE SPECIFICATION 07 92 13 ELASTOMERIC JOINT SEALANTS

REPAIR MATERIAL: SIKA 2C NS EZ OR EQUAL

QUANTITY TYPE: ELASTOMERIC JOINT SEALANT AT SIDE SLOPE CONSTRUCTION JOINT = 1,500 LF



SIDE SLOPE JOINT REPAIR

NOTES:

1. REMOVE EXISTING SEALANT
2. CLEAN SURFACES OF FOREIGN OR LOOSE MATERIAL
3. PRIME SURFACES IF RECOMMENDED
4. INSTALL EXPANSION JOINT FILLER AS NEEDED
5. INSTALL BACKER ROD
6. FILL JOINT WITH SEALANT



15 EXPANSION JOINT - SIDE SLOPES
CA-2

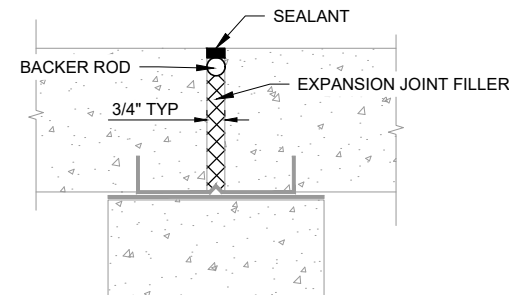
14 EXPANSION JOINT - VERTICAL WALL
CA-4

NOTE: ALL JOINTS IN THE FLOOR HAD THE ORIGINAL SEALANT REMOVED AND REPLACED. REMOVE EXISTING SEALANT AND REPLACE WITH ELASTOMERIC JOINT SEALANT.

REPAIR TYPE: JOINT REPAIR, SEE SPECIFICATION 07 92 13 ELASTOMERIC JOINT SEALANTS

REPAIR MATERIAL: SIKA 2C NS EZ OR EQUAL

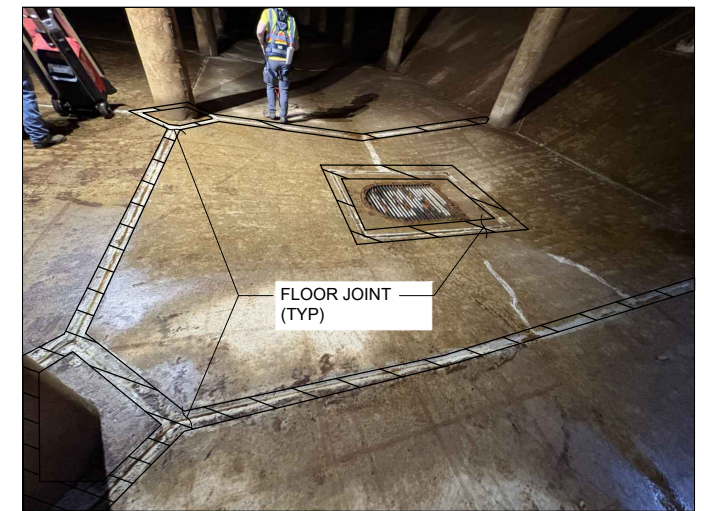
QUANTITY: ELASTOMERIC JOINT SEALANT AT FLOOR SLAB CONSTRUCTION JOINT = 3,800 LF



FLOOR SLAB JOINT REPAIR

NOTES:

1. REMOVE EXISTING SEALANT
2. CLEAN SURFACES OF FOREIGN OR LOOSE MATERIAL
3. PRIME SURFACES IF RECOMMENDED
4. INSTALL EXPANSION JOINT FILLER AS NEEDED
5. INSTALL BACKER ROD
6. FILL JOINT WITH SEALANT



16 EXPANSION JOINT - FLOOR SLAB
CA-2



5/8/26

CPN 2606 -
4MG TEMPORARY REPAIRS
REPAIR DETAILS - JOINTS



SCALE:	DESIGNED	DRAWN	CHECKED	DATE DRAWN	REVISIONS
JJ	NP	MP	MP	04.27.2026	
SS	SS	SS	SS	05.08.2026	
					DRAWING NAME CD-1.dwg

PROJECT NO.	2002006515
CD-4	
SHEET	14
OF	14