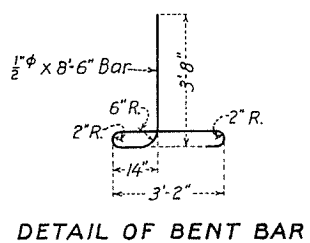
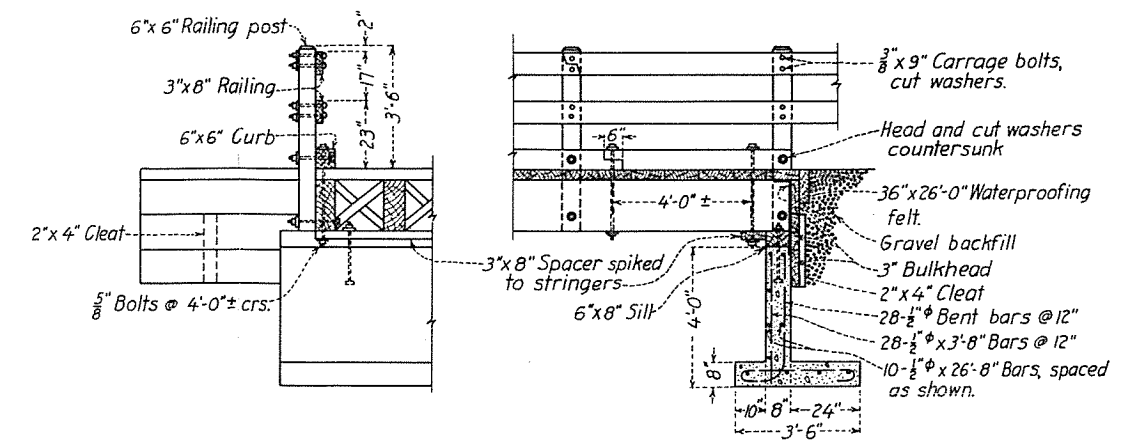


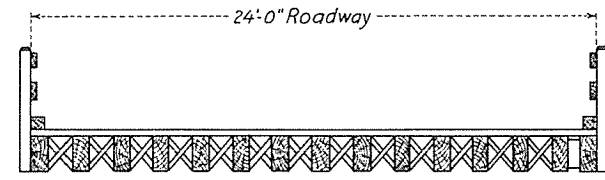
PLAN



DETAIL OF BENT BAR



RAILING - BULKHEAD - ABUTMENT



SECTION THRU DECK

REINFORCEMENT REQUIRED

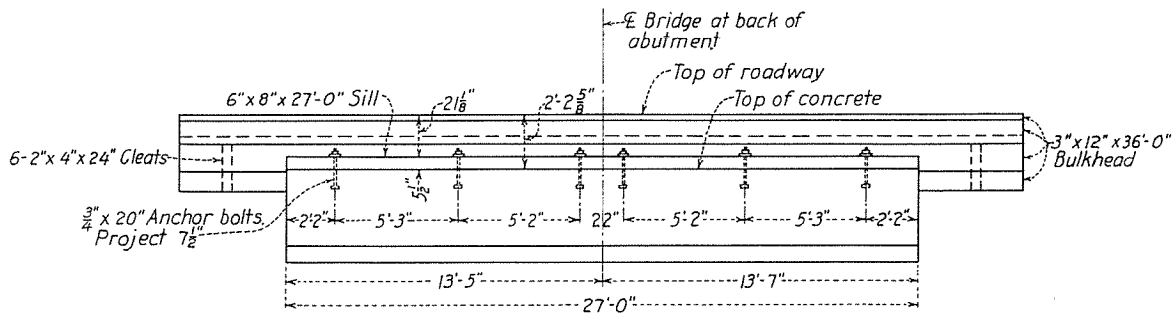
24 Bars	1/2" x 26'-8"
56 Bent bars	1/2" x 8'-6"
56 Bars	1/2" x 3'-8"
14 Bars	1/2" x 3'-2"

ESTIMATED QUANTITIES

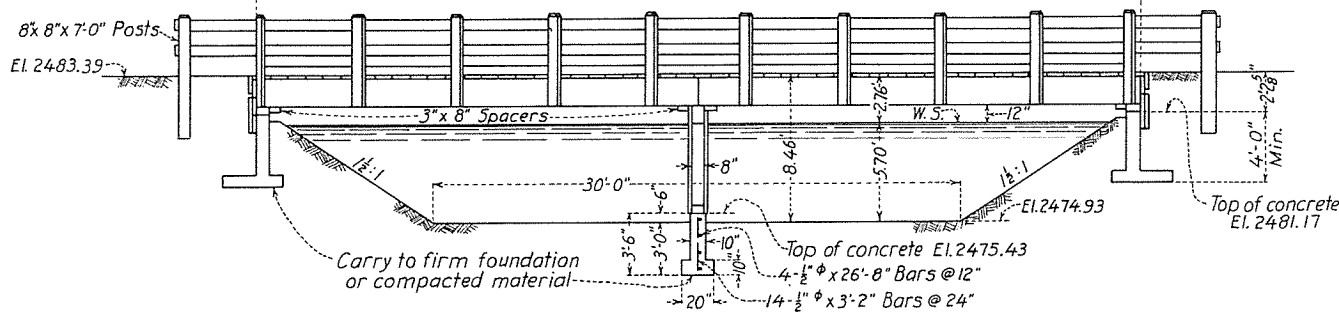
Lumber	18,700	F. B. M.
Concrete	13	Cu. Yds.
Reinforcement steel	1,000	Lbs.

NOTES

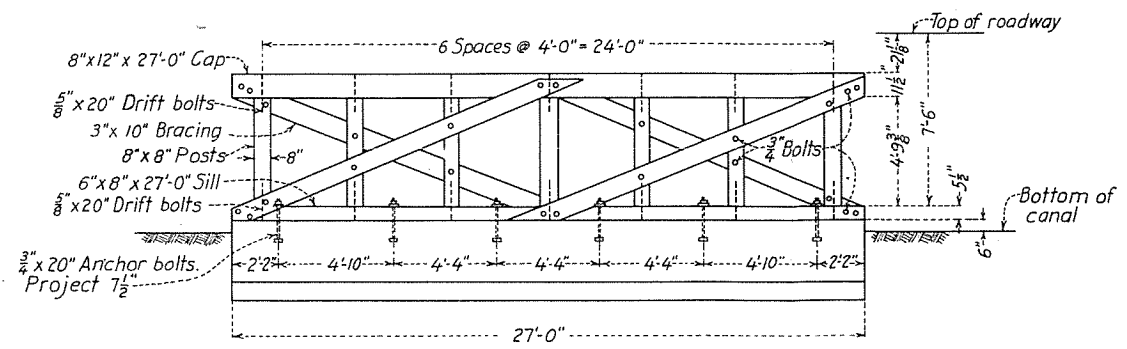
Bridge designed for two lanes of H-15 loading. All reinforcement shall be placed so that the centers of bars in the outer layer will be 2" from face of concrete unless otherwise shown. All dimensions to reinforcement are to center lines of bars or P. I. of bends. All bolts 5/8" unless otherwise shown. Malleable iron washers to be used unless otherwise shown. Stringers, floor planks and cap to be Select Structural Douglas Fir. All contact surfaces and ends of fir lumber shall be coated with wood preservative. Railing timbers to be surfaced four sides and painted white. Bulkheads, cleats, and sills to be treated. Embedded ends of posts to be coated with creosote.



ELEVATION OF ABUTMENTS



ELEVATION



ELEVATION OF BENT

UNITED STATES DEPARTMENT OF THE INTERIOR
BUREAU OF RECLAMATION
DESCHUTES PROJECT - OREGON
NORTH UNIT MAIN CANAL - STA. 2935 + 39
TIMBER HIGHWAY BRIDGE

DRAWN *J.W.F.* SUBMITTED *D. Spier*
TRACED *C.H.C.* RECOMMENDED *W.M. Denny*
CHECKED *W.A.* APPROVED *W.A. Melder*
DENVER, COLORADO, MARCH 28, 1946 112-D-1608