

CITYWIDE PREVENTATIVE BRIDGE MAINTENANCE

WALLA WALLA, WA
 FEDERAL AID PROJECT # BHM-9936(007)
 FEDERAL AID AGREEMENT #LA10554
 BR-2501

SHEET NO.	SHEET ABBR.	SHEET TITLE
1	IN1	COVER SHEET
2	IN2	LEGEND AND ABBREVIATIONS
3	IN3	GENERAL NOTES AND SUMMARY OF QUANTITIES
4	B01	MYRA ROAD LAYOUT
5	B02	MYRA ROAD DETAILS
6	B03	WILBUR STREET LAYOUT
7	B04	WILBUR STREET DETAILS
8	B05	THREE MILE ROAD LAYOUT
9	B06	THREE MILE ROAD DETAILS
10	B07	MAIN STREET LAYOUT
11	B08	MAIN STREET DETAILS
12	B09	COLVILLE STREET LAYOUT
13	B10	MERRIAM STREET LAYOUT
14	B11	MERRIAM STREET DETAILS 1 OF 2
15	B12	MERRIAM STREET DETAILS 2 OF 2
16	B13	OTIS STREET LAYOUT
17	B14	OTIS STREET DETAILS 1 OF 2
18	B15	OTIS STREET DETAILS 2 OF 2
19	B16	S CLINTON STREET LAYOUT
20	B17	S CLINTON STREET DETAILS
21	B18	2ND AVENUE LAYOUT
22	B19	2ND AVENUE DETAILS
23	B20	CONCRETE REPAIR DETAILS
24	TC1	TRAFFIC CONTROL - VICINITY MAP
25	TC2	TRAFFIC CONTROL - MYRA DETOUR
26	TC3	TRAFFIC CONTROL - WILBUR STREET
27	TC4	TRAFFIC CONTROL - WILBUR STREET
28	TC5	TRAFFIC CONTROL - THREE MILE ROAD
29	TC6	TRAFFIC CONTROL - THREE MILE ROAD
30	TC7	TRAFFIC CONTROL - COLVILLE STREET
31	TC8	TRAFFIC CONTROL - MERRIAM DETOUR
32	TC9	TRAFFIC CONTROL - OTIS DETOUR
33	TC10	TRAFFIC CONTROL - CLINTON STREET
34	TC11	TEMPORARY PEDESTRIAN RAMP DETAILS

CA Agency Approval

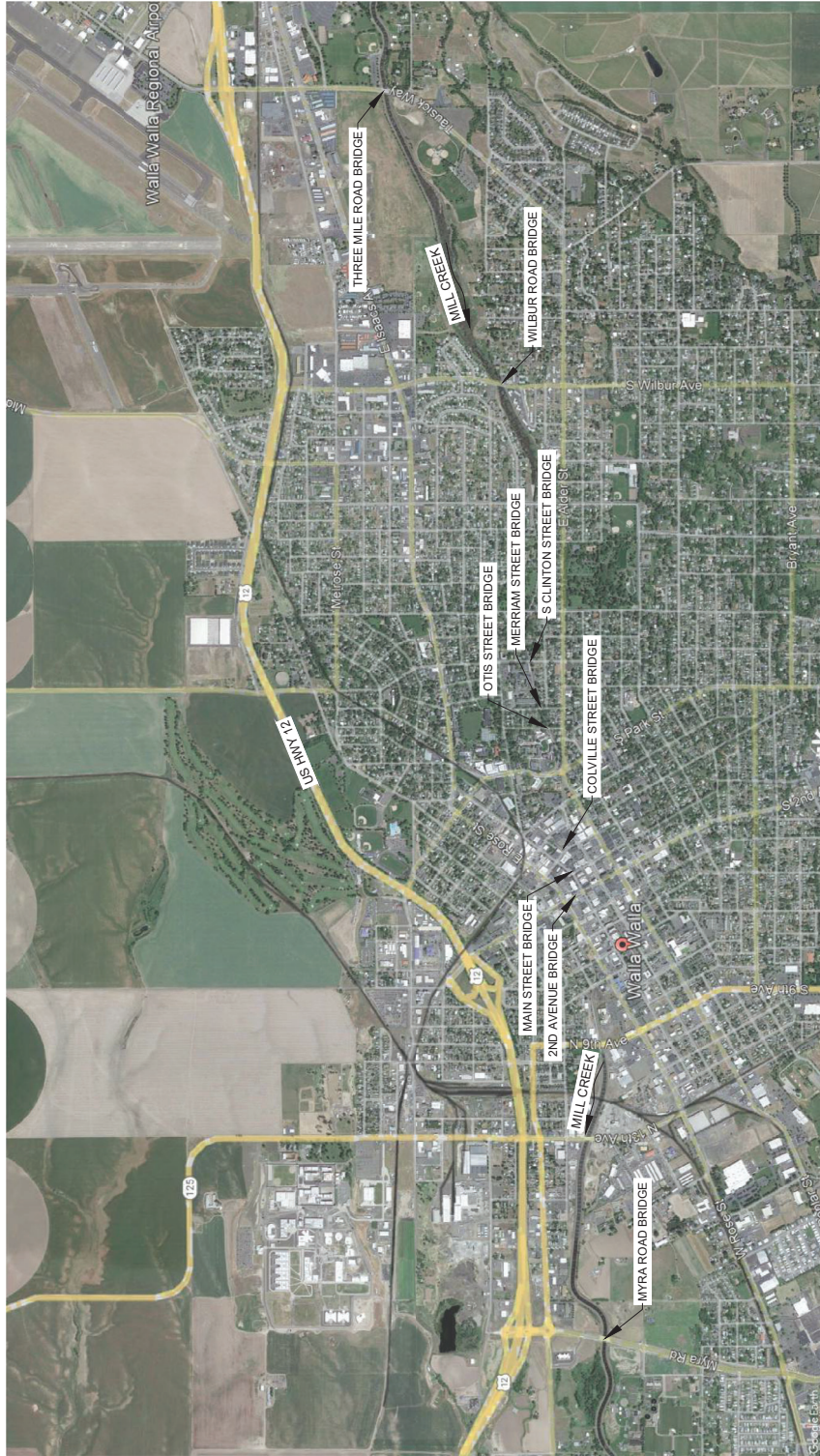
John R. Lemaster
 Assistant City Engineer

CITY COUNCIL
 GUSTAVO RETANA MAYOR
 STEVE MOSS
 JEFFREY OTULAN
 RICK ENKEL
 MONTEA WILLIS
 JENNIFER WILSON
 EMILY BROWN

CITY OFFICIALS
 JOHN R. LEMASTER - CITY MANAGER
 NI BEALEY P.E. - PUBLIC WORKS DIRECTOR
 NEAL CHAMBERLAIN P.E. - CITY ENGINEER
 KEANE DANSON - PROJECT COORDINATOR



VICINITY MAP
 NOT TO SCALE



DESIGNED BY: J. LEMASTER
 DETAILLED BY: B. HERRON
 CHECKED BY: J. WARREN

REVISIONS
 NO. DATE REVISION
 BY CR

DAVID EVANS
 AND ASSOCIATES, INC.
 808 N Howard St. Ste 400
 Spokane, WA 99201
 Phone: 509.327.6677

City of Walla Walla
 U.S. Department of Transportation
 Federal Highway Administration
 A WONDERFUL PLACE TO LIVE
 WORK PLAY

CITYWIDE PREVENTATIVE BRIDGE MAINTENANCE
 FEDERAL-AID NO. BHM-9936(007)

COVER SHEET

CITY OF WALLA WALLA
 WASHINGTON

PROJECT NO. BR-2501
 SHEET NO. 01 OF 34
 IN1

LEGEND

PROPOSED	EXISTING	PROPOSED	EXISTING
▲	▲	RIGHT OF WAY	— RW —
●	●	PROPERTY LINE	— PL —
○	○	PERMANENT EASEMENT	— PE —
+	+	TEMPORARY EASEMENT	— TE —
✕	✕	CURB & GUTTER	— CG —
*	*	STRAIGHT CURB	— SC —
⊛	⊛	FENCE LINE (TYPE AS NOTED)	— FL —
⊙	⊙	RETAINING WALL	— RW —
⊚	⊚	EDGE OF PAVEMENT	— EP —
⊛	⊛	WATER LINE	— W —
⊚	⊚	GAS UNDERGROUND LINE	— G —
⊛	⊛	GAS UNDERGROUND LINE - ABANDONED	— GA —
⊚	⊚	FIBER OVERHEAD LINE	— FO —
⊛	⊛	FIBER UNDERGROUND LINE	— FU —
⊚	⊚	POWER OVERHEAD LINE	— PO —
⊛	⊛	POWER UNDERGROUND LINE	— PU —
⊚	⊚	TELEPHONE OVERHEAD LINE	— TO —
⊛	⊛	TELEPHONE UNDERGROUND LINE	— TU —
⊚	⊚	STORM DRAIN LINE	— SD —
⊛	⊛	SANITARY SEWER LINE	— SS —
⊚	⊚	CONTOUR - 1.0' INTERVAL	— C1 —
⊛	⊛	CONTOUR - 5.0' INTERVAL	— C5 —
⊚	⊚	POLYESTER CONCRETE OVERLAY	— PC —
⊛	⊛	SIDEWALK REPLACEMENT	— SW —
⊚	⊚	SILANE SEALER	— SS —
⊛	⊛	HMA PAVING	— HMA —
⊚	⊚	LIMITS OF ASPHALT APPROACH GRINDING	— LA —
⊛	⊛	APPROXIMATE AREA OF REPAIR	— AR —
⊚	⊚	LIMITS OF REINFORCED SIDEWALK REPLACEMENT	— LR —
⊛	⊛	CONTROL POINT (AS NOTED)	— CP —
⊚	⊚	BRASS CAP/SURFACE MON (AS NOTED)	— CB —
⊛	⊛	IRON PIPE (AS NOTED)	— IP —
⊚	⊚	REBAR (AS NOTED)	— RB —
⊛	⊛	NAIL PKING	— NP —
⊚	⊚	LIGHT	— L —
⊛	⊛	LANDSCAPE LIGHT	— LL —
⊚	⊚	SIGN	— S —
⊛	⊛	BOLLARD	— B —
⊚	⊚	GUY ANCHOR	— GA —
⊛	⊛	POWER POLE	— PP —
⊚	⊚	ELECTRIC CABINET	— EC —
⊛	⊛	ELECTRIC RISER	— ER —
⊚	⊚	ELECTRIC METER	— EM —
⊛	⊛	ELECTRIC VALVE	— EV —
⊚	⊚	TELEPHONE POLE	— TP —
⊛	⊛	TELEPHONE RISER	— TR —
⊚	⊚	TELEPHONE CABINET	— TC —
⊛	⊛	TELEPHONE MANHOLE	— TM —
⊚	⊚	STORM CATCH BASIN	— SCB —
⊛	⊛	STORM DRAIN MANHOLE	— SDM —
⊚	⊚	STORM FIELD INLET	— SFI —
⊛	⊛	SEWER MANHOLE	— SM —
⊚	⊚	WATER VALVE	— WV —
⊛	⊛	WATER METER	— WM —
⊚	⊚	GAS VALVE	— GV —
⊛	⊛	FIRE HYDRANT	— FH —
⊚	⊚	IRRIGATION CONTROL VALVE	— ICV —
⊛	⊛	DECIDUOUS TREE	— DT —
⊚	⊚	BUSH	— B —
⊛	⊛	MAILBOX	— M —
⊚	⊚	FLOW ARROW	— FA —
⊛	⊛	BIKE RACK	— BR —

ABBREVIATIONS

ABBREVIATION	DESCRIPTION
AASHTO	AMERICAN ASSOCIATION OF STATE HIGHWAY AND TRANSPORTATION OFFICIALS
ABUT	ABUTMENT
A.P.	ANGLE POINT
AVE	AVENUE
BK	BACK
B/O	BLACK AND ORANGE
BVCE	BEGIN VERTICAL CURVE ELEVATION
BVGS	BEGIN VERTICAL CURVE STATION
CFS	CUBIC FEET PER SECOND
C.I.P.	CAST-IN-PLACE
CONC.	CONCRETE
D.I.	DUCTILE IRON
E	EAST
EL. ELEV	ELEVATION
EVCE	END VERTICAL CURVE ELEVATION
EVGS	END VERTICAL CURVE STATION
EX	EXISTING
I.E.	INVERT ELEVATION
L.F.	LINEAR FEET
LT	LEFT
LRFD	LOAD AND RESISTANCE FACTOR DESIGN
MAX.	MAXIMUM
MIN.	MINIMUM
N	NORTH
NO	NUMBER
PC	POINT OF CURVATURE
POMS	PORTABLE CHANGEABLE MESSAGE SIGN
PSI	POUNDS PER SQUARE INCH
PT	POINT OF TANGENCY
PVC	POLYVINYL CHLORIDE
PVI	POINT OF VERTICAL INTERSECTION
RT	RIGHT
S	SOUTH
SEC	SECOND
SD	STORM DRAIN
SDCB	STORM DRAIN CATCH BASIN
ST	STREET
STA	STATION
TYP	TYPICAL
UG	UNDERGROUND
W	WEST



DESIGNED BY: J. LEMASTER
 DETAILED BY: B. HERRON
 CHECKED BY: J. WARREN
 REVISION LOG
 NO DATE REVISION
 BY: CK

DAVID EVANS
 ARCHITECTS INC.
 808 N. HOWARD ST. SUITE 500
 SPOKANE, WA 99201
 PHONE: 509.327.0887



U.S. Department of Transportation
Federal Highway Administration
 Washington State
 Department of Transportation

CITYWIDE PREVENTATIVE BRIDGE MAINTENANCE
 FEDERAL-AID NO. BHIM-9836(007)

LEGEND AND ABBREVIATIONS

CITY OF WALLA WALLA WASHINGTON

PROJECT NO. BR-2501
 SHEET NO. 02 OF 34

IN2

GENERAL NOTES

- THE CONTRACTOR SHALL KEEP THE SITE IN A NEAT AND ORDERLY CONDITION. ALL TRASH GENERATED BY THE CONTRACTOR'S OPERATIONS SHALL BE PICKED UP AT THE END OF THE DAY. EQUIPMENT, VEHICLES, AND MATERIALS SHALL BE STAGED OFF-SITE.
- ALL MATERIALS AND WORKMANSHIP SHALL BE IN ACCORDANCE WITH THE REQUIREMENTS OF THE LATEST VERSION OF THE WASHINGTON STATE DEPARTMENT OF TRANSPORTATION STANDARD SPECIFICATIONS FOR ROAD, BRIDGE, AND MUNICIPAL CONSTRUCTION AND AMENDMENTS.
- ALL CAST-IN-PLACE CONCRETE SHALL BE CLASS 4000 FOR CONCRETE DECKS AND CLASS 4000 FOR ALL OTHER CONCRETE.
- EXISTING OTHERWISE SHOWN IN THE PLANS, CONCRETE COVER MEASURED FROM THE FACE OF CONCRETE TO THE FACE OF ANY REINFORCING STEEL SHALL BE 2".
- ALL DIMENSIONS AND DIMENSIONS ARE BASED ON INSPECTION REPORTS AND AS-BUILT PLANS. ALL DIMENSIONS NOTED WITH AN ASTERISK (*) SHALL BE FIELD MEASURED BY THE CONTRACTOR PRIOR TO ORDERING MATERIALS AND PROCEEDING WITH CONSTRUCTION.
- ALL LONGITUDINAL AND TRANSVERSE DIMENSIONS ARE MEASURED HORIZONTALLY AND INCLUDE NO CORRECTION FOR GRADE, UNLESS OTHERWISE NOTED.
- THE CONTRACTOR SHALL PROTECT THE MILL CREEK CHANNEL FROM ANY FALLING DEBRIS AND/OR CONSTRUCTION MATERIALS DURING THE CONSTRUCTION WORK. ALL DEBRIS AND/OR CONSTRUCTION MATERIAL WHICH FALLS IN THE CHANNEL SHALL BE REMOVED. SEE SPECIAL PROVISIONS FOR ADDITIONAL INFORMATION.
- CONTRACTOR TO COMPLY WITH PERMIT CONDITIONS SET FORTH IN THE HYDRAULIC PROJECT APPROVAL (HPA). HPA APPROVAL IS EXPECTED PRIOR TO BEGINNING CONSTRUCTION.
- CONTRACTOR TO MAINTAIN STABILITY OF EXISTING BRIDGES AND ADJACENT STRUCTURES DURING CONSTRUCTION.
- ALL EXPOSED CONCRETE CORNERS SHALL BE CHAMFERED 3/4" UNLESS NOTED OTHERWISE.
- REINFORCING BARS SHALL CONFORM TO ASTM A706 GRADE 60 UNLESS OTHERWISE NOTED. THE MINIMUM LAP SPICE FOR BLACK REINFORCING BARS SHALL BE AS SHOWN IN THE TABLE BELOW.

BAR SIZES:					
SPICE LENGTH (TOP BARS):	#4	#5	#6	#7	#8
SPICE LENGTH (OTHERS):	2'-0"	2'-7"	3'-1"	3'-7"	4'-1"
SPICE LENGTH (EPOXY COATED):	1'-3"	2'-0"	2'-4"	2'-9"	3'-2"
THE ABOVE SPICE LENGTHS ARE FOR CLASS B SPLICES WHERE $w_c \geq 0.4$.	5'-2"	6'-5"	7'-8"	8'-11"	10'-3"

OF CONCRETE IS NOT TO BE REINFORCED WITH MORE THAN 12" OF CONCRETE IN ANY ONE PLACE.

- THESE DETAILS REFLECT THE SCOPE AND THE NATURE OF THE WORK. THEY ARE NOT INTENDED TO REPRESENT THE ACTUAL STRUCTURE.
- THE APPLICABLE CLASSES OF REMOVAL SHALL BE AS DESIGNATED BY THE SUMMARY OF QUANTITIES IN THE PLANS.
- PLAN QUANTITIES ARE ESTIMATES. ACTUAL CONCRETE REMOVAL AND REPLACEMENT WILL BE AS NEEDED TO REACH SOUND CONCRETE OR AS DIRECTED BY THE ENGINEER.
- REMOVAL OPERATIONS SHALL BE COORDINATED WITH THE ENGINEER AND PERFORMED IN A MANNER AS REQUIRED TO ENSURE THE STRUCTURAL INTEGRITY OF THE BRIDGE.
- IF FALSING IS REQUIRED, THE FALSING LOAD CAPACITY REQUIRED TO SUPPORT THE BRIDGES SHALL BE DETERMINED BY THE CONTRACTOR AND APPROVED BY THE ENGINEER UNLESS SPECIFIED OTHERWISE ON THE PLANS.
- CARE SHALL BE TAKEN IN REMOVING CONCRETE FROM AROUND STRUCTURAL STEEL ELEMENTS AND REINFORCING STEEL TO PREVENT DAMAGE TO THE STEEL.
- ALL DAMAGED OR CORRODED NON-EPOXY COATED REINFORCING STEEL REQUIRES NEW NON-EPOXY COATED REINFORCING STEEL TO BE ADDED. ALL EXPOSED NON-EPOXY COATED REINFORCING STEEL SHALL BE CLEANED WITH HAND TOOLS, STRAIGHTENED AND SANDBLASTED PRIOR TO PLACING CONCRETE.
- PATCH DECK MAY BE OPENED TO TRAFFIC AS SOON AS NEW CONCRETE HAS ATTAINED REQUIRED STRENGTH.
- HMA AND WATERPROOFING MEMBRANE SHALL NOT BE PLACED UNTIL THE NEW CONCRETE HAS CURED FOR FIVE FULL DAYS, OR HAS A MOISTURE METER READING OF 5 PERCENT OR LESS BASED ON A MOISTURE METER APPROVED BY THE ENGINEER.
- INTENTIONALLY ROUGHEN ALL CONCRETE SURFACES RECEIVING REPAIR TO AN AMPLITUDE OF 1/4".
- CONCRETE REPAIR SCREWS SHALL BE TAPCON, OR APPROVED EQUAL. SCREWS SHALL BE EMBEDDED INTO SOUND CONCRETE A MINIMUM OF 2". INSTALL PER MANUFACTURER'S RECOMMENDATIONS. SCREWS ARE REQUIRED WHERE SHOWN IN THE DETAILS AND WHERE CLEAR BEHIND REINFORCING IS NOT ACHIEVABLE. SCREWS WILL NOT BE MEASURED AND PAID FOR SEPARATELY BUT SHALL BE INCLUDED IN CONCRETE REPAIR BID ITEM.
- WEAVE 16 GAGE REINFORCING THE WIRE ASTM A1064 BETWEEN SCREWS TO FORM SPIDERWEB BETWEEN SCREWS. WIRE WILL NOT BE MEASURED AND PAID FOR SEPARATELY, BUT SHALL BE INCIDENTAL TO CONCRETE REPAIR BID ITEM.
- REMOVE RUST AND DEBRIS FROM ALL EXPOSED REINFORCEMENT. CONTRACTOR MAY SPICE AND REPLACE REINFORCEMENT AS NEEDED.
- PROTECT EXISTING REINFORCING IN PLACE. CONTRACTOR SHALL NOTIFY THE ENGINEER IF REINFORCING IS DAMAGED.
- PROVIDE A MINIMUM OF 1" CLEAR BETWEEN REINFORCING AND PREPARED SURFACE.
- ALL SURFACES SHALL RECEIVE AN EPOXY CONCRETE BINDER PRIOR TO PLACING CONCRETE. EPOXY BINDER SHALL BE SIKA ARMA TECK - 100 EPOCEM OR APPROVE EQUAL. BINDER IS INCIDENTAL TO CONCRETE REPAIR BID ITEM.
- REMOVE AND REPLACE FENCING AS REQUIRED TO COMPLETE SIDEWALK REPLACEMENTS (INCIDENTAL TO WORK).
- SUBGRADE FOR ALL SIDEWALK REPLACEMENTS SHALL BE COMPACTED TO A FIRM UNYIELDING SURFACE WITH A MINIMUM OF 4 PASSES USING A VIBRATORY COMPACTOR PRIOR TO PLACING NEW SIDEWALK (INCIDENTAL TO WORK).
- REPLACEMENT SIDEWALK THICKNESS SHALL BE 4 INCHES MINIMUM OR MATCH EXISTING, WHICHEVER IS GREATER.
- ALL LANDSCAPING AND IRRIGATION DISTURBED, OR DAMAGED DURING CONSTRUCTION SHALL BE RESTORED TO PRECONSTRUCTION CONDITION OR BETTER. REPAIR/RESTORATION WORK SHALL BE INCIDENTAL TO "CEMENT CONC. SIDEWALK", "CEMENT CONC. SIDEWALK", "CEMENT CONC. SIDEWALK", "CEMENT CONC. TRAFFIC CURB AND GUTTER", "PEDESTRIAN CURB", "CEMENT CONC. CURB RAMP TYPE - PARALLEL", OR "HMA CL. 36 IN. PG495-28" AS APPROPRIATE.
- NON-REINFORCED SIDEWALKS ADJACENT THE BRIDGE STRUCTURE SHALL BE REPLACED PER CITY STANDARD PLAN 2-7.
- TROLLEY TRACKS MAY EXIST ON CLINTON AND IF ENCOUNTERED, FOLLOW THE INADVERTENT DISCOVERY PLAN (IDP).
- INLET PROTECTION WILL INCLUDE PROTECTING ALL INLETS WITHIN EACH PROJECT LOCATION FOOTPRINT AND WILL ALSO EXTEND ONE CITY BLOCK IN EACH DIRECTION OF THE PROJECT FOOTPRINTS. (QUANTITY = 25 INLETS)

SUMMARY OF QUANTITIES

STD. ITEM NUMBER	SECTION NUMBER	ITEM DESCRIPTION	UNIT	Myra Road	Wilbur Street	Three Mile	Main Street	Cobville Street	Meridian Street	Oils Street	S Clinton Street	2nd Avenue	TOTAL QTY
0001	1-08	MOBILIZATION	LS										
0008	1-07	ARCHAEOLOGICAL AND HISTORICAL SALVAGE	EST										
SPECIAL	6-02	REMOVING REINFORCED CEMENT CONC. SIDEWALK	S.Y.	155	36	10	2		59				269
0110	2-02	REMOVING CEMENT CONC. SIDEWALK	S.Y.	6	41	60			52				169
0180	8-22	REMOVING PLASTIC CONC. CURB	LF	732		558							1290
		Section: 5 Storm Sewer											
3051	6-02	CATCH BASIN TYPE 1	EACH	1	2								3
		Section: 8 Structure											
4338	6-02	EXPANSION JOINT SYSTEM COMPRESSION SEAL - SUPERSTR.	LF	109		123							232
4477	6-02	EPOXY RESIN	GAL				3						3
4449	6-02	EPOXY CRACK SEALING	LF				41	27					68
4485	6-09	FURTHER DECK PREPARATION FOR TYPE 1 DECK REPAIR	S.F.	355		265		100	100	15			805
4467	6-09	FURTHER DECK PREPARATION FOR TYPE 2 DECK REPAIR	S.F.			225		150	40				415
4516	6-02	PLACING BITUMINOUS PAVEMENT	S.Y.			213			22				235
5111	6-09	REMOVE CONCRETE AND COAT REINFORCING STEEL	S.F.	333			30						363
SPECIAL	6-09	POLYESTER CONCRETE OVERLAY	S.Y.	1059		557		111	281	261	144	140	1956
SPECIAL	6-09	SILANE SEALER	S.Y.										
SPECIAL	6-09	REPAIR BRIDGE RAIL AND SIDEWALKS	C.F.										
SPECIAL	6-09	REPAIR BRIDGE SUBSTRUCTURE	C.F.										
SPECIAL	6-09	REPAIR BRIDGE GRIDDERS	C.F.										
SPECIAL	6-09	STRUCTURAL CONCRETE COATING	S.F.			2275		4	12				2291
SPECIAL	6-09	REMOVE AND REPLACE REINFORCING STEEL	EST.										
SPECIAL	6-09	FORCE ACCOUNT REINFORCING STEEL	EST.										
		Section: 14 Hot Mix Asphalt											
5768	5-04	HMA CL 38 IN PG 645-28	TON	28		17							45
5830	5-06	JOB MIX COMPLIANCE PRICE ADJUSTMENT	CALC										
5835	5-06	COMPACTION PRICE ADJUSTMENT	CALC										
		Section: 17 Erosion Control and Roadside Planning											
6403	8-01	ESC LEAD	DAY	2	2	2	2	2	2	2	2	2	18
6471	8-01	EROSION CONTROL	EACH	1	3	6	1	5	2	3	3	1	25
6488	8-01	WATER POLLUTION PREVENTION	LS										
7795	1-07	SPCC PLAN	LS										
		Section: 18 Traffic											
6877	8-22	PLASTIC LINE	LF	1012		337							1349
6818	8-22	PLASTIC WIDE LINE	LF			169							169
6815	8-22	PLASTIC WIDE LINE	LF			105							105
6857	8-22	PLASTIC CROSSWALK LINE	S.F.			140							140
6857	8-22	PLASTIC BICYCLE LANE SYMBOL	EACH										
6871	1-10	PROJECT TEMPORARY TRAFFIC CONTROL	LS	1	1	1	1	1	1	1	1	1	8
		Section: 19 Other Items											
SPECIAL	6-12	WATER VALVE BOX	EACH	3		2							5
SPECIAL	7-05	MANHOLE CASTING AND LID	EACH	1		1							2
7055	6-09	CEMENT CONC. SIDEWALK	S.Y.	155	36	10	2		52	14			274
SPECIAL	6-09	REINFORCED CONC. SIDEWALK	S.Y.										
6700	6-09	CEMENT CONC. TRAFFIC CURB AND GUTTER	LF		41	60			59				160
6707	6-09	CEMENT CONC. PEDESTRIAN CURB	LF										
SPECIAL	6-09	GRIND SIDEWALK	LF	6		39		50					103
SPECIAL	1-05	RECORD DRAWINGS	LS										
SPECIAL	1-05	CONCRETE BARRIERS	S.F.			280							280
SPECIAL	8-15	CEMENT CONC. CURB RAMP TYPE - PARALLEL	S.F.										
4738	1-04	MINOR CHANGE	CALC										

LEGEND

- IDENTIFIES SECTION OR VIEW LETTER
- SHEET NUMBER WHERE SECTION OR VIEW IS SHOWN
- EPOXY COATED BARS
- DASH INDICATES SECTION, VIEW, OR DETAIL IS TAKEN AND SHOWN ON THE SAME SHEET



DESIGNED BY: J. LEIMASTER
 DETAILED BY: B. HERRON
 CHECKED BY: J. WARREN
 NO DATE REVISION

DAVID EVANS
 AND ASSOCIATES, INC.
 808 1/2 HOWARD ST. SUITE 500
 SPOKANE, WA 99201
 PHONE: 509.327.8877

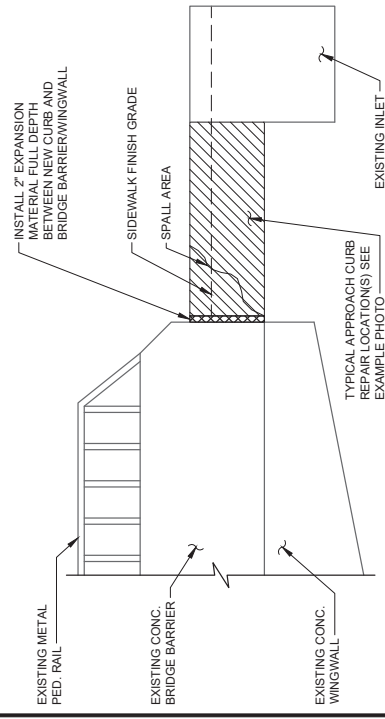
City of Walla Walla
 U.S. Department of Transportation
 Federal Highway Administration
 A WONDERSHILL PLACE TO LIVE
 WORK PLAY

CITYWIDE PREVENTATIVE BRIDGE MAINTENANCE
 FEDERAL-AID NO. BHM-9836(007)
 GENERAL NOTES AND
 SUMMARY OF QUANTITIES
 CITY OF WALLA WALLA

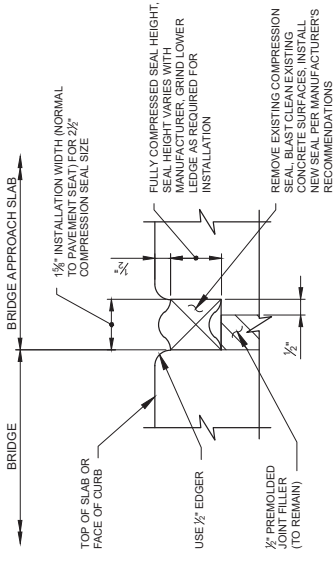
PROJECT NO.
 BR-2501
 SHEET NO. 03 OF 34
 IN3



**TYPICAL DAMAGED APPROACH CURB
NE CORNER SHOWN**

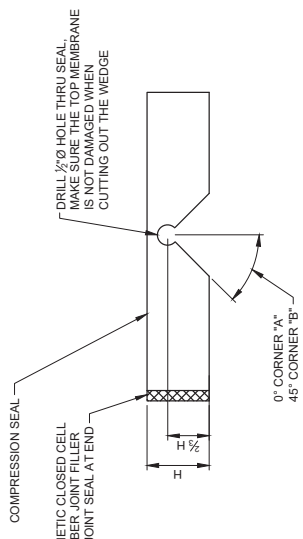


CURB REPAIR DETAIL



COMPRESSION SEAL DETAIL

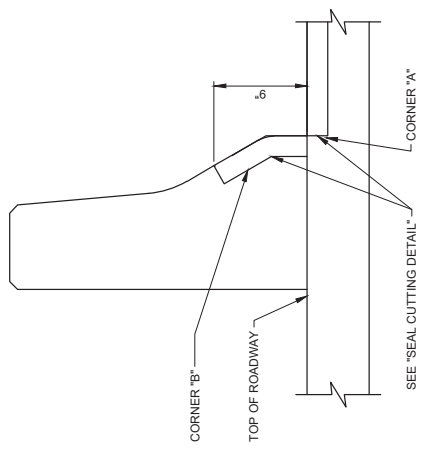
COMPRESSION SEAL TABLE	
D.S. BROWN	WATSON
BOWMAN ACME	
SEAL W (in.)	SEAL W (in.)
CV-2502	2 1/2"
	WA-250
	2 1/2"



SEAL CUTTING DETAIL



SOUTHEAST APPROACH SIDEWALK SHOWN



COMPRESSION SEAL INSTALLATION AT BARRIER DETAIL

LEGEND



APPROXIMATE AREA OF REPAIR

CITYWIDE PREVENTATIVE BRIDGE MAINTENANCE
FEDERAL-AID NO. BHIM-9836(007)

MYRA ROAD DETAILS

CITY OF WALLA WALLA WASHINGTON

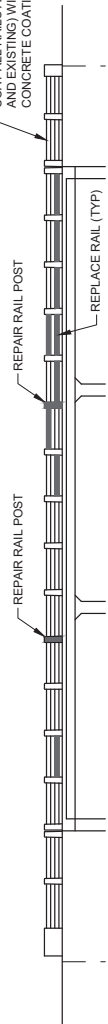
City of Walla Walla
A WONDERFUL PLACE TO LIVE WORK PLAY
U.S. Department of Transportation
Federal Highway Administration
Washington State Department of Transportation

DAVID EVANS AND ASSOCIATES Inc.
808 N Howard St. Ste 400
Spokane, WA 99201
Phone 509.327.6677

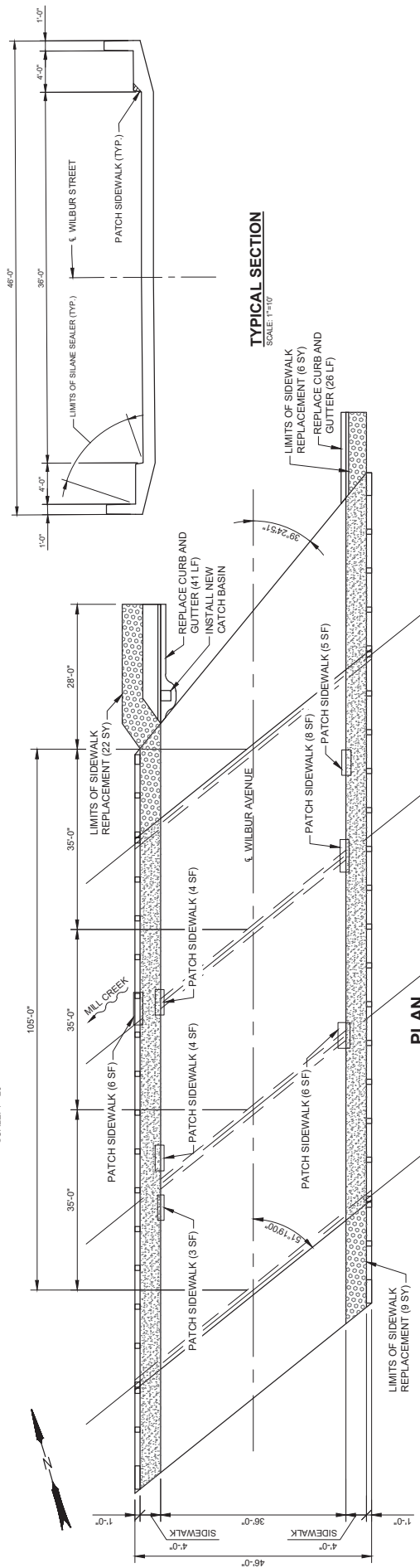
DESIGNED BY: J. LEMASTER
DETAILED BY: B. HERRON
CHECKED BY: J. WARREN
NO DATE REVISION
BY: CK



COAT ALL RAILS AND POSTS (NEW AND EXISTING) WITH A STRUCTURAL CONCRETE COATING.



WEST RAIL REPAIRS
(LOOKING UPSTREAM (EAST))
SCALE: 1"=20'



TYPICAL SECTION
SCALE: 1"=10'



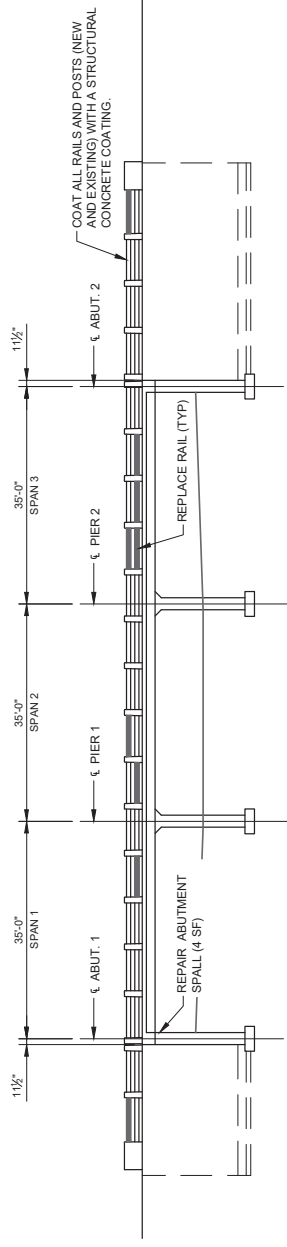
PLAN
SCALE: 1"=20'

WORK DESCRIPTION

1. REPLACE BRIDGE RAILS AND REPAIR POSTS
2. PATCH AND REPAIR SIDEWALK
3. INSTALL SILANE SEALER
4. REPLACE SIDEWALK APPROACHES
5. REPAIR ABUTMENT
6. STRUCTURAL CONCRETE COATING
7. REMOVE AND REPLACE CURB AND GUTTER
8. STORM CATCH BASIN, FRAME, AND GRATE

LEGEND

- [Pattern] LIMITS OF SILANE SEALER
- [Pattern] LIMITS OF SIDEWALK REPLACEMENT
- [Pattern] BRIDGE RAIL AND POSTS TO BE REPLACED OR REPAIRED



EAST RAIL REPAIRS
(LOOKING DOWNSTREAM (WEST))
SCALE: 1"=20'

DESIGNED BY: J. LEIMASTER
CHECKED BY: B. HERRON
REVISIONS:
NO DATE REVISION

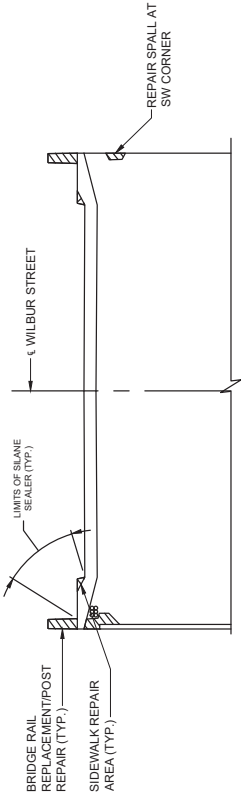
DAVID EVANS
AND ASSOCIATES, Inc.
608 N Howard St. Ste 400
Spokane, WA 99201
Phone: 509.327.8877

City of Walla Walla
U.S. Department of Transportation
Federal Highway Administration
Washington State
Department of Transportation
A WONDERFUL PLACE TO LIVE WORK PLAY

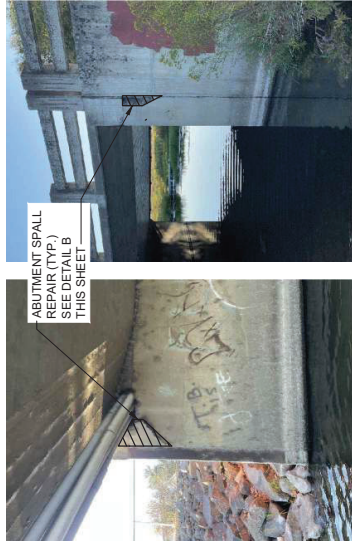
CITYWIDE PREVENTATIVE BRIDGE MAINTENANCE
FEDERAL-AID NO. BHM-9836(007)
WILBUR STREET LAYOUT
CITY OF WALLA WALLA

PROJECT NO. BR-2501
SHEET NO. 06 OF 34
B03





TYPICAL SECTION SOUTH ABUTMENT LOOKING SOUTH



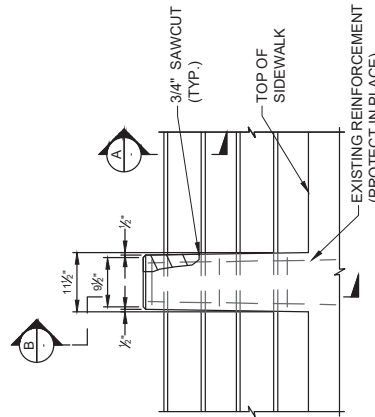
TYPICAL ABUTMENT SPALL REPAIRS
N.T.S.



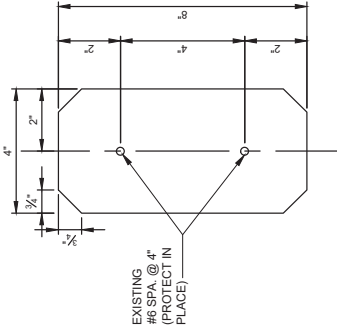
TYPICAL BARRIER POST SPALL REPAIR
N.T.S.



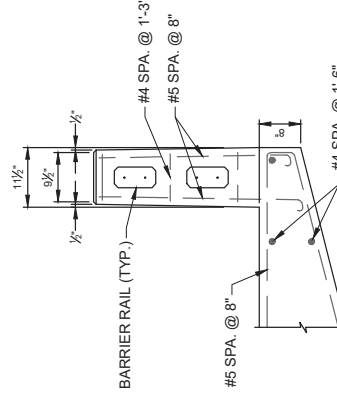
TYPICAL SIDEWALK AND RAIL REPAIRS
N.T.S.



BARRIER RAIL AND POST ELEVATION



SECTION A



SECTION B

LEGEND

APPROXIMATE AREA OF REPAIR

DESIGNED BY: J. LEMASTER
 DETAILED BY: B. HERRON
 CHECKED BY: J. WARREN
 REVISIONS:
 NO. DATE REVISION
 BY: CK

DAVID EVANS & ASSOCIATES, Inc.
 603 N. Howard St., Ste. 400
 Spokane, WA 99201
 Phone: 509.325.8787

City of Walla Walla
 U.S. Department of Transportation
 Federal Highway Administration
 Washington State
 Department of Transportation

LIVE WORK PLAY
 A WONDERFUL PLACE TO

CITYWIDE PREVENTATIVE BRIDGE MAINTENANCE
 FEDERAL-AID NO. BHM-9836(007)

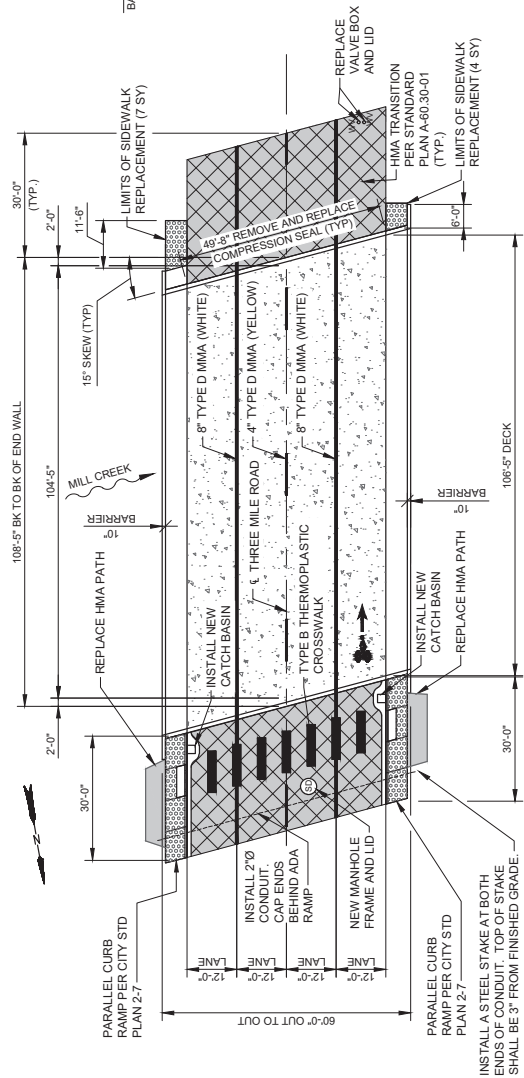
WILBUR STREET DETAILS

CITY OF WALLA WALLA

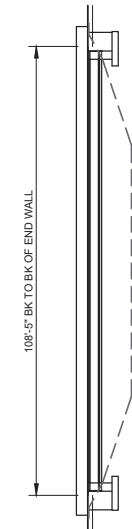
WASHINGTON

PROJECT NO. BR-2501
 SHEET NO. 07 OF 34
B04

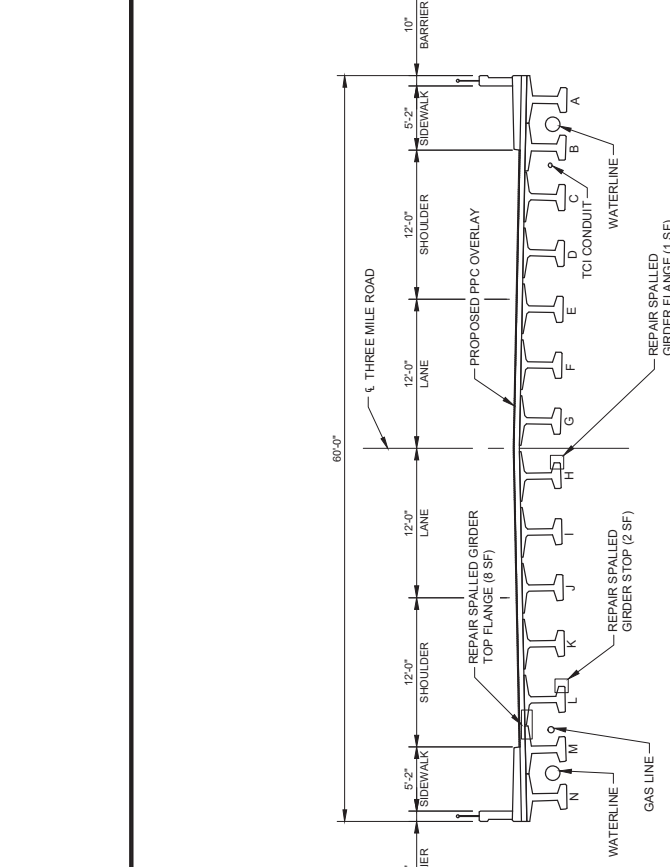




PLAN
SCALE: 1"=30'



SECTION
SCALE: 1"=30'



TYPICAL SECTION
SCALE: 1"=10'

WORK DESCRIPTION

1. PARTIAL DEPTH BRIDGE DECK REPAIR
2. REPAIR DAMAGED GIRDER STOP AND FLANGES
3. APPLY PPC OVERLAY
4. REPLACE COMPRESSIVE SEAL
5. REPLACE DAMAGED SIDEWALK PANEL
6. PARTIAL DEPTH RAMP CITY STD PLAN 2-7
7. 4" PPC CONDUIT
8. STORM CATCH BASIN, GRATE AND FRAME
9. SD MANHOLE GRATE AND FRAME
10. PAVEMENT MARKINGS
11. CURB AND GUTTER

LEGEND

- [Symbol] LIMITS OF DECK SOUNDING AND DECK REPAIR AND POLYESTER POLYMER CONCRETE OVERLAY
- [Symbol] LIMITS OF SIDEWALK REPLACEMENT
- [Symbol] LIMITS OF HMA
- [Symbol] LIMITS OF ASPHALT APPROACH GRINDING



DESIGNED BY: J. LEMASTER
 DETAILLED BY: B. HERRON
 CHECKED BY: J. WARREN
 REVISIONS:
 NO DATE REVISION
 BY: CK

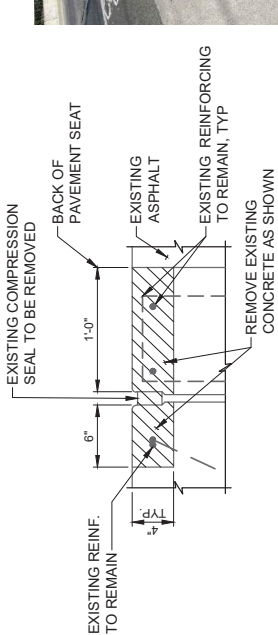
DAVID EVANS
 AND ASSOCIATES, Inc.
 608 N. Howard St., Ste. 400
 Spokane, WA 99201
 Phone: 509.327.0687



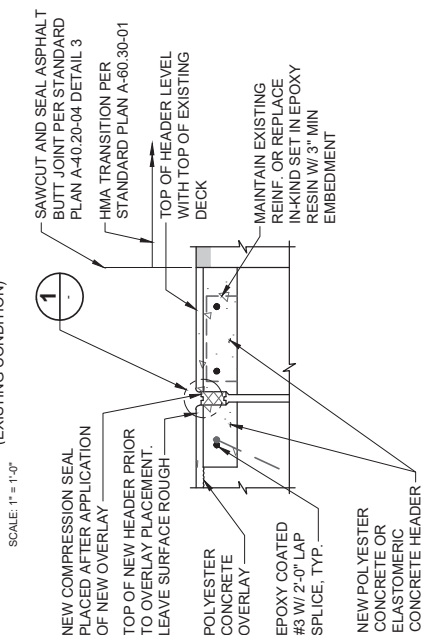
CITY OF WALLA WALLA
 U.S. Department of Transportation
 Federal Highway Administration
 Washington State
 Department of Transportation

CITYWIDE PREVENTATIVE BRIDGE MAINTENANCE
 FEDERAL-AID NO. BHM-9836(007)
THREE MILE ROAD LAYOUT
(TAUSICK WAY)
 CITY OF WALLA WALLA

PROJECT NO. **BR-2501**
 SHEET NO. **08 OF 34**
B05



EXPANSION JOINT AT ABUTMENTS
(EXISTING CONDITION)



EXPANSION JOINT AT ABUTMENTS
(MODIFIED CONDITION)

SCALE: 1" = 1'-0"

COMPRESSION SEAL TABLE	
D. S. BROWN	WATSON BOWMAN ACME
SEAL	W (in.)
CV-2502	2"
	W (in.)
	WA-250
	Z'



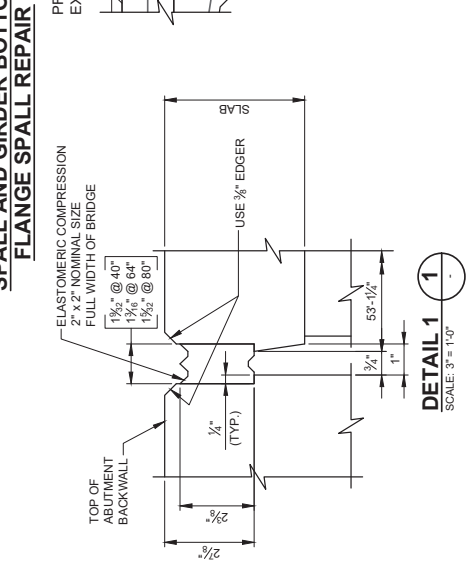
APPROACH SIDEWALK REPAIR

REMOVE NW APPROACH SIDEWALK PANEL AND REPLACE



TYPICAL GIRDER STOP SPALL AND GIRDER BOTTOM FLANGE SPALL REPAIR

REPAIR DAMAGED GIRDER STOPS (TYP.)

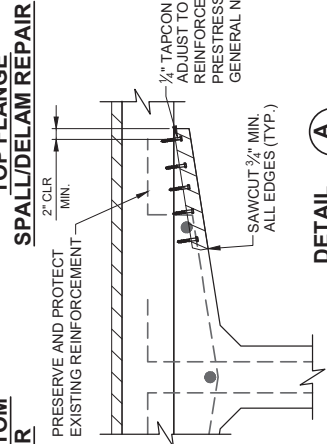


DETAIL 1
SCALE: 3" = 1'-0"



GIRDER FLANGE SPALL/DELAMINATION REPAIR. SEE DETAIL A FOR MORE INFORMATION (TYP.)

TYPICAL GIRDER TOP FLANGE SPALL/DELAM REPAIR



DETAIL A
SCALE: 1" = 1'-0"



DESIGNED BY: J. LEMASTER
 DETAILED BY: B. HERRON
 CHECKED BY: J. WARREN
 REVISIONS:
 NO DATE REVISION

DAVID EVANS
 AND ASSOCIATES, Inc.
 608 N. Howard St., Ste. 400
 Spokane, WA 99201
 Phone: 509.325.8787

City of Walla Walla
 U.S. Department of Transportation
 Federal Highway Administration
 A WONDERFUL PLACE TO LIVE
 WORK PLAY

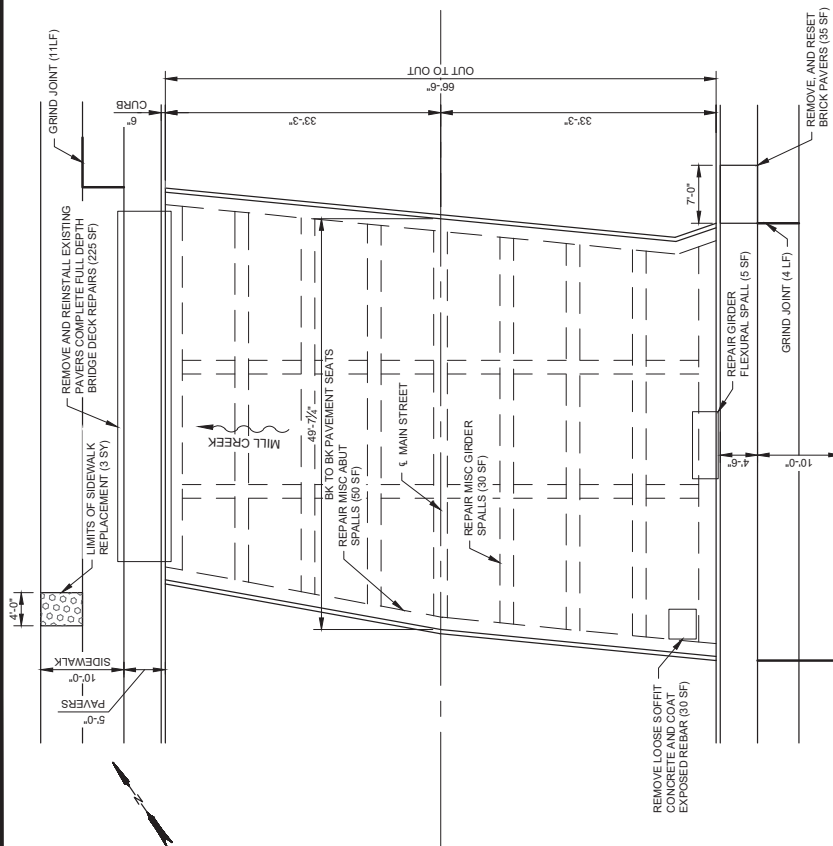
CITYWIDE PREVENTATIVE BRIDGE MAINTENANCE
 FEDERAL-AID NO. BHM-9836(007)
THREE MILE ROAD DETAILS
 (TAUSICK WAY)

CITY OF WALLA WALLA

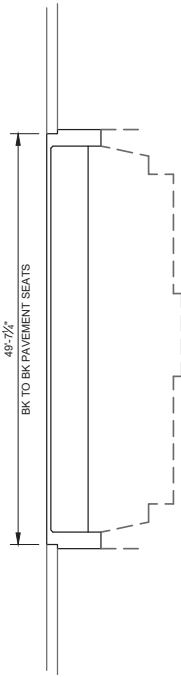
WASHINGTON

PROJECT NO. BR-2501
 SHEET NO. 09 OF 34
B06

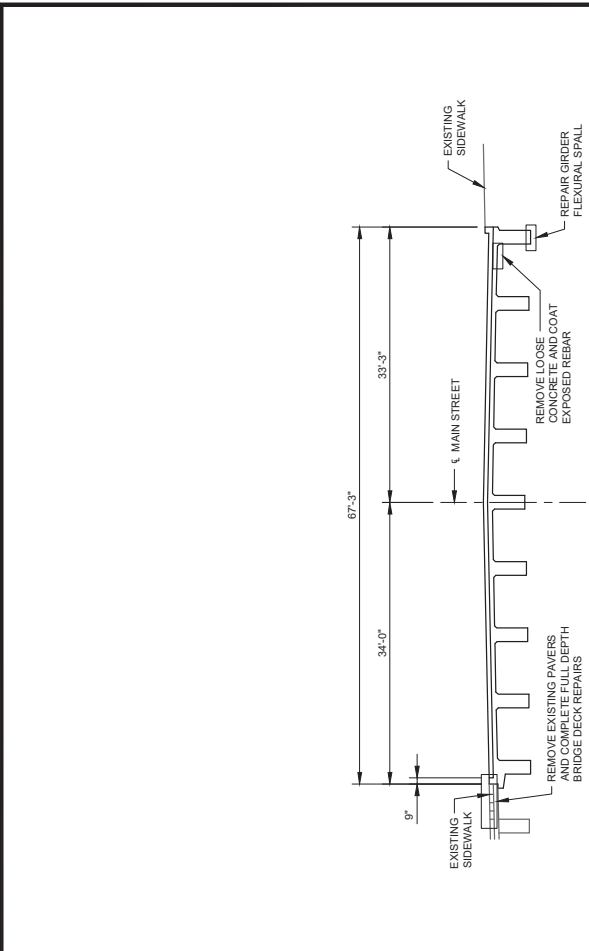
LEGEND
 APPROXIMATE AREA OF REPAIR



PLAN
SCALE: 1"=15'
49'-7 1/2"



SECTION
SCALE: 1"=15'



TYPICAL SECTION
SCALE: 1"=15'

WORK DESCRIPTION

1. FULL DEPTH BRIDGE DECK REPAIR (7% OF DECK AREA 225 SF)
2. EXPOSED REINFORCING
3. REPAIR GIRDER SPALLS
4. REPAIR ABUTMENT/WINGWALLS
5. REQUIRES CHANNEL PROTECTION
6. CONCRETE PAVERS
7. REMOVE AND REPLACE SIDEWALK
8. GRIND SIDEWALK JOINT

LEGEND

LIMITS OF SIDEWALK REPLACEMENT



DESIGNED BY: J. LEMASTER
 DETAILED BY: B. HERRON
 CHECKED BY: J. WARREN
 REVISION LOG
 NO DATE REVISION

DAVID EVANS ARCHITECTS Inc.
 603 N Howard St. Ste 400
 Spokane, WA 99201
 Phone: 509.327.8877

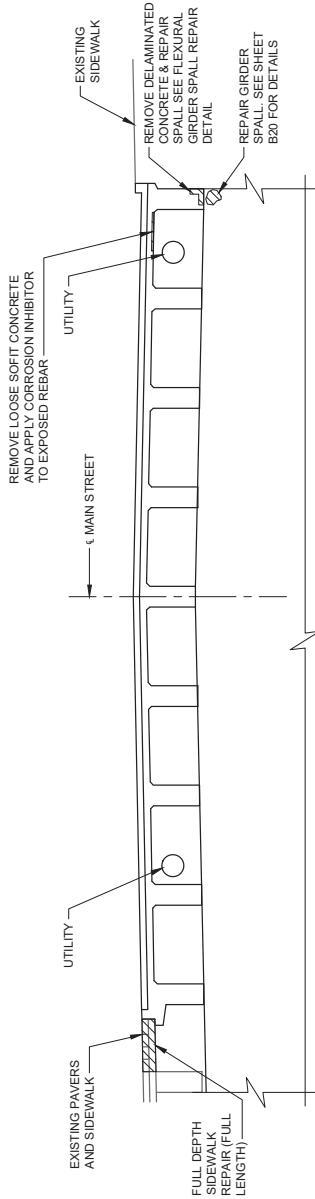
City of Walla Walla
 U.S. Department of Transportation
 Federal Highway Administration
 A WONDERFUL PLACE TO LIVE
WORK PLAY
 Washington State
 Department of Transportation

CITYWIDE PREVENTATIVE BRIDGE MAINTENANCE
 FEDERAL-AID NO. BHM-9836(007)

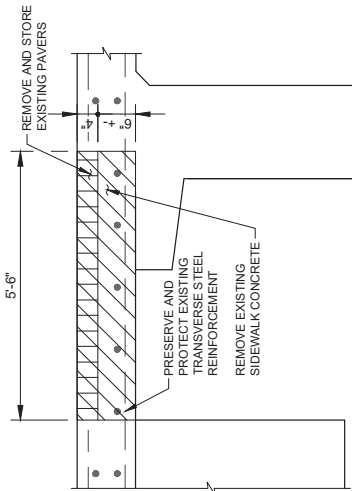
MAIN STREET LAYOUT

CITY OF WALLA WALLA

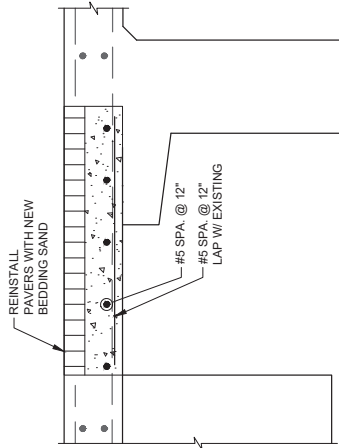
WASHINGTON



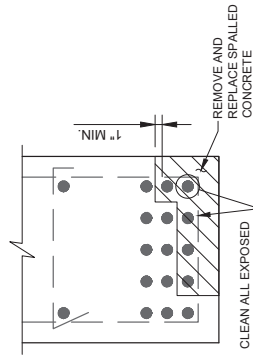
TYPICAL SECTION
SCALE: 1"=10"



FULL DEPTH DECK REMOVAL
SCALE: 1/2"=1'-0"



FULL DEPTH DECK REPAIR
SCALE: 1/2"=1'-0"



FLEXURAL GIRDER SPALL DETAIL
SCALE: 1"=1'-0"

LEGEND

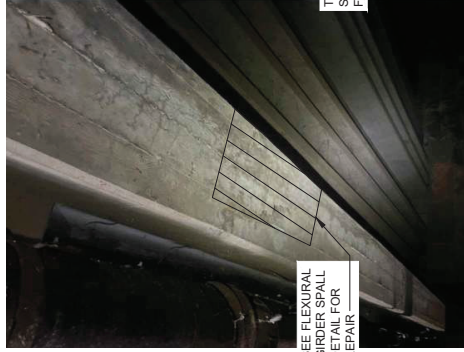
- APPROXIMATE AREA OF REMOVALS
- APPROXIMATE AREA OF NEW CONCRETE



FULL DEPTH DECK REPAIR. SEE BELOW FOR REPAIR DETAIL

REMOVE LOOSE CONCRETE, CLEAN AND COAT EXISTING REINFORCEMENT, AND SEE SHEET B20 FOR REPAIR DETAILS

FULL DEPTH DECK REPAIR



SEE FLEXURAL GIRDER SPALL DETAIL FOR REPAIR

FLEXURAL GIRDER SPALL REPAIR



TYPICAL ABUTMENT SPALL. SEE SHEET B20 FOR REPAIR DETAILS

TYPICAL ABUTMENT SPALL REPAIR



DESIGNED BY: J. LEMASTER
 DETAILED BY: B. HERRON
 CHECKED BY: J. WARREN
 REVISIONS:
 NO DATE REVISION

BY:

DAVID EVANS
 ARCHITECTS
 808 N. Howard St., Ste. 400
 Spokane, WA 99201
 Phone: 509.325.7877

City of Walla Walla
 U.S. Department of Transportation
 Federal Highway Administration
 A WONDERFUL PLACE TO LIVE
 WORK & PLAY

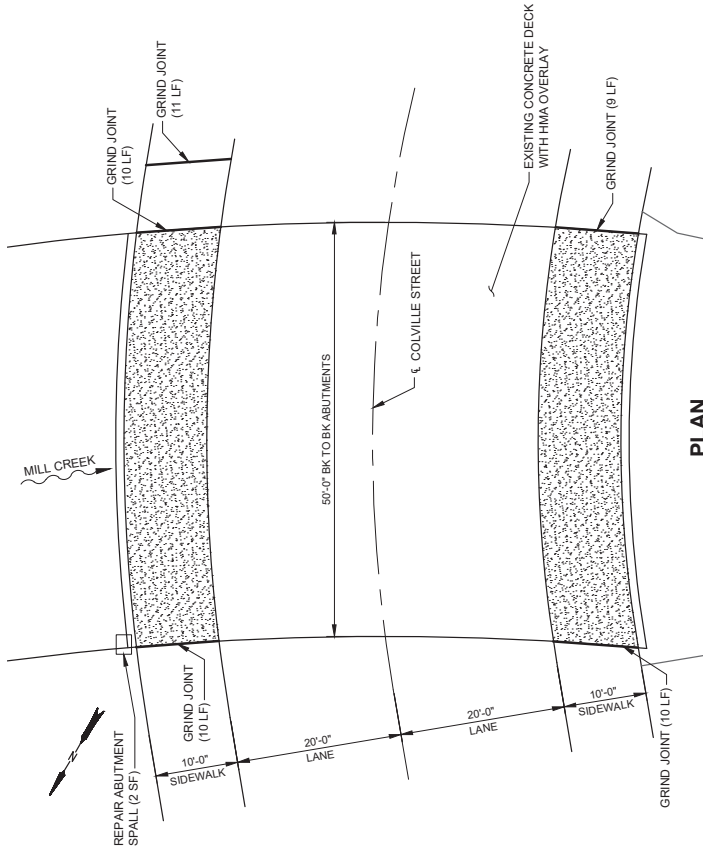
CITYWIDE PREVENTATIVE BRIDGE MAINTENANCE
 FEDERAL-AID NO. BHIM-9836(007)

MAIN STREET DETAILS

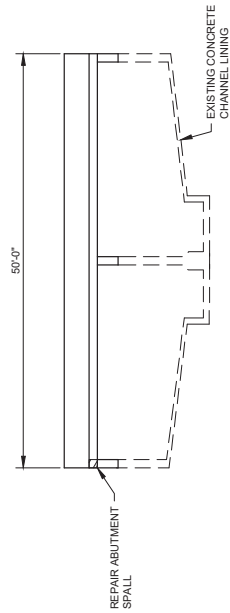
CITY OF WALLA WALLA

WASHINGTON

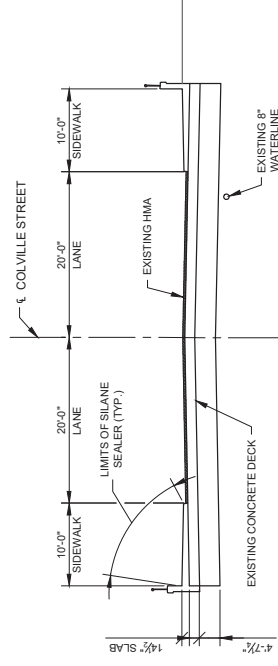
PROJECT NO. BR-2501
 SHEET NO. 11 OF 34
B08



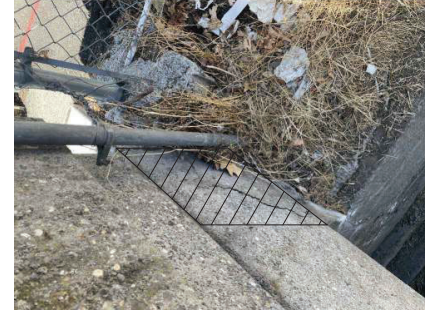
PLAN
SCALE: 1"=15'



SECTION
SCALE: 1"=15'



TYPICAL SECTION
SCALE: 1"=15'



ABUTMENT SPALL REPAIR

WORK DESCRIPTION

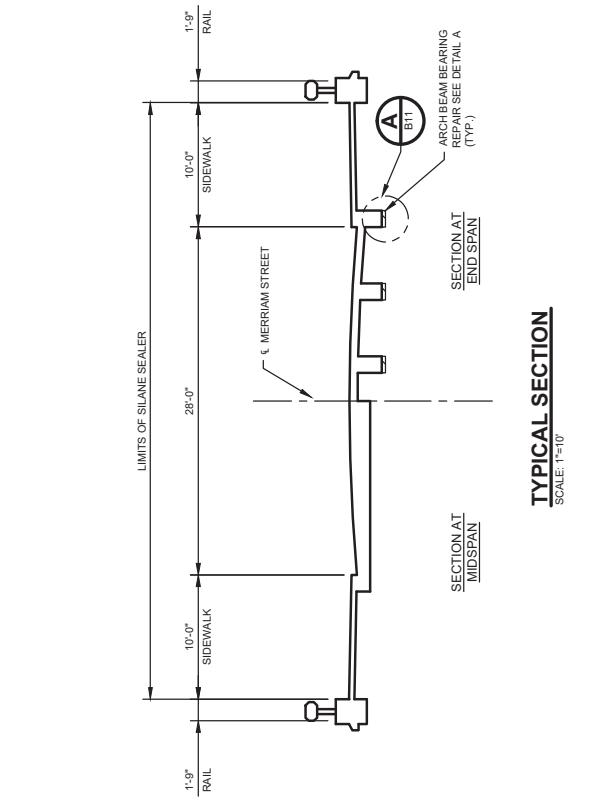
1. REPAIR ABUTMENT SPALL
2. APPLY SILANE CONCRETE SEALER TO SIDEWALKS
3. GRIND SIDEWALK JOINT

LEGEND

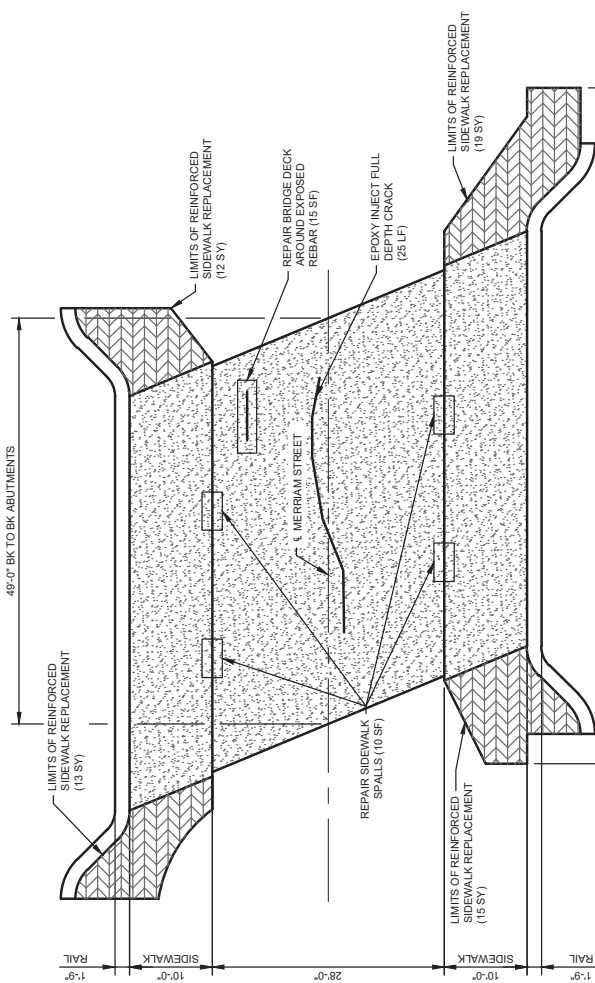
- LIMITS OF SILANE SEALER
- APPROXIMATE AREA OF REPAIR
- LIMITS OF SIDEWALK REPLACEMENT

 City of Walla Walla A WONDERFUL PLACE TO LIVE WORK PLAY	 U.S. Department of Transportation Federal Highway Administration WASHINGTON STATE Department of Transportation	CITYWIDE PREVENTATIVE BRIDGE MAINTENANCE FEDERAL-AID NO. BHIM-9836(007)
 DAVID EVANS and ASSOCIATES, Inc. 808 N. Howard St., Ste. 400 Spokane, WA 99201 Phone: 509.325.7887	COLVILLE STREET LAYOUT CITY OF WALLA WALLA	WASHINGTON B09 SHEET NO. 12 OF 34 PROJECT NO. BR-2501
DESIGNED BY: J. LEMASTER DETAILED BY: B. HERRON CHECKED BY: J. WARREN REVISIONS: NO. DATE REVISION BY:		

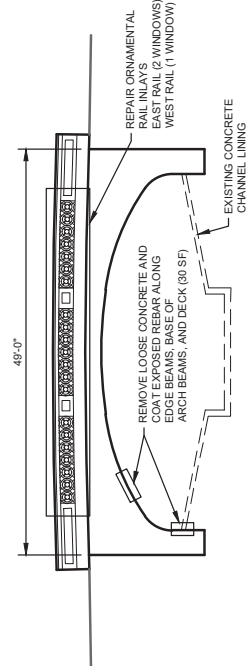




PLAN
SCALE: 1"=15'



TYPICAL SECTION
SCALE: 1"=10'



SECTION
SCALE: 1"=15'

WORK DESCRIPTION

1. PARTIAL DEPTH BRIDGE DECK REPAIR
2. REPAIR AREA 100 SF OF CONCRETE AND COAT EXPOSED REBAR
3. EPOXY REPAIR CRACKS
4. REPAIR BRIDGE RAILS
5. REPAIR ABUTMENT/WINGWALLS
6. REPAIR SIDEWALKS
7. APPLY SILANE CONCRETE SEALER
8. REMOVE AND REPLACE REINFORCED SIDEWALK

LEGEND

- LIMITS OF DECK SOUNDING, BRIDGE DECK REPAIRS AND SILANE SEALER
- LIMITS OF REINFORCED SIDEWALK REPLACEMENT



DESIGNED BY: J. LEWISTER
 DETAILED BY: B. HERRON
 CHECKED BY: J. WARREN
 REVISION LOG
 NO DATE REVISION

DAVID EVANS
 ARCHITECTS
 800 N. Howard St., Ste. 400
 Spokane, WA 99201
 Phone: 509.327.8877

City of Walla Walla
 U.S. Department of Transportation
 Federal Highway Administration
 A WONDERFUL PLACE TO LIVE
 WORK PLAY

CITYWIDE PREVENTATIVE BRIDGE MAINTENANCE
 FEDERAL-AID NO. BHIM-9836(007)
MERRIAM STREET LAYOUT
 CITY OF WALLA WALLA WASHINGTON

PROJECT NO. BR-2501
 SHEET NO. 13 OF 34
B10



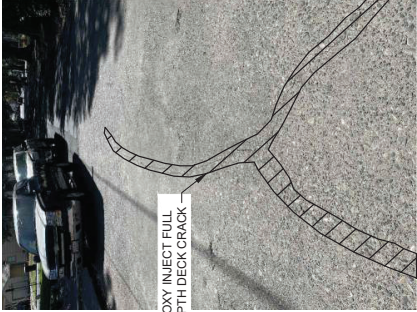
REMOVE ALL LOOSE CONCRETE AROUND ARCH BEAMS AND BEAM BEARING LOCATIONS. CLEAN AND EPOXY COAT ALL EXPOSED REINFORCEMENT. PATCH WITH CONCRETE ALL LOCATIONS WHERE CONCRETE IS REMOVED BEYOND EXISTING REINFORCEMENT. (TYP.) SEE DETAIL A AND B

REMOVE ALL LOOSE CONCRETE. CLEAN AND COAT EXPOSED REINFORCING STEEL

TYPICAL BEAM BEARING REPAIR

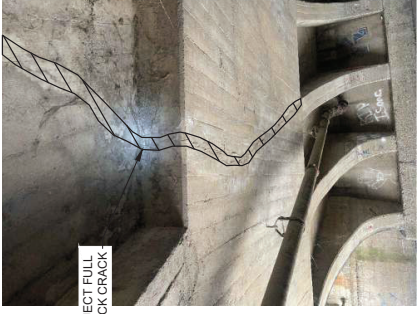


TYPICAL BEAM SPALL/DELAMINATION REPAIR



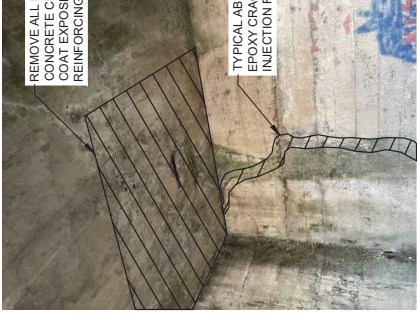
EPOXY INJECT FULL DEPTH DECK CRACK

FULL DEPTH DECK EPOXY CRACK INJECTION REPAIR



EPOXY INJECT FULL DEPTH DECK CRACK

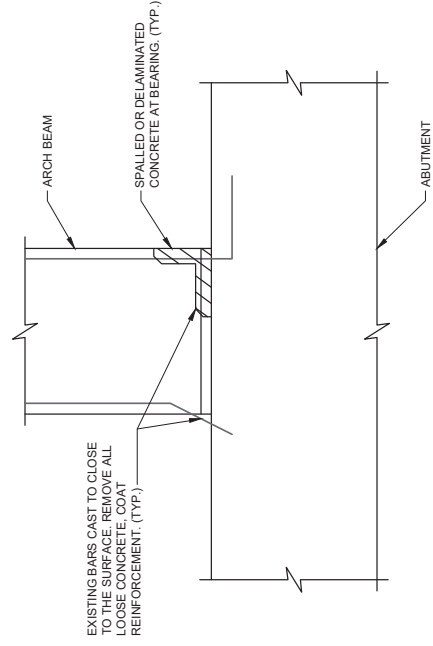
FULL DEPTH DECK EPOXY CRACK INJECTION REPAIR



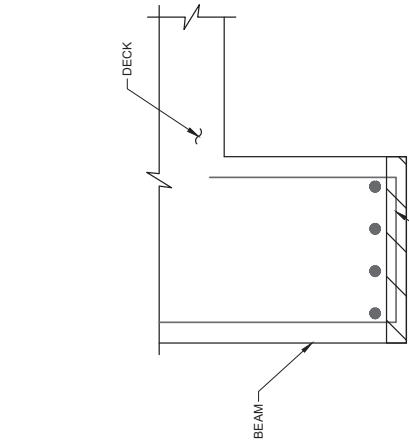
REMOVE ALL LOOSE CONCRETE CLEAN AND COAT EXPOSED REINFORCING STEEL

TYPICAL ABUTMENT EPOXY CRACK INJECTION REPAIR

TYPICAL PARTIAL DEPTH DECK REPAIR/ABUTMENT EPOXY CRACK INJECTION REPAIR



EXISTING BARS CAST TO CLOSE TO THE SURFACE. REMOVE ALL LOOSE CONCRETE. COAT REINFORCEMENT. (TYP.)



REMOVE ALL LOOSE CONCRETE. CLEAN AND COAT ALL EXPOSED REINFORCEMENT

DETAIL A B11

DETAIL B B11

LEGEND

APPROXIMATE AREA OF REPAIR



DESIGNED BY: J. LEMASTER
 CHECKED BY: B. HERRON
 J. WARREN
 REVISIONS:
 NO DATE REVISION BY CK

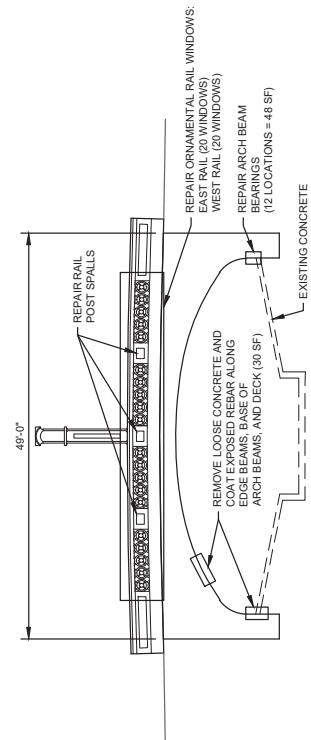
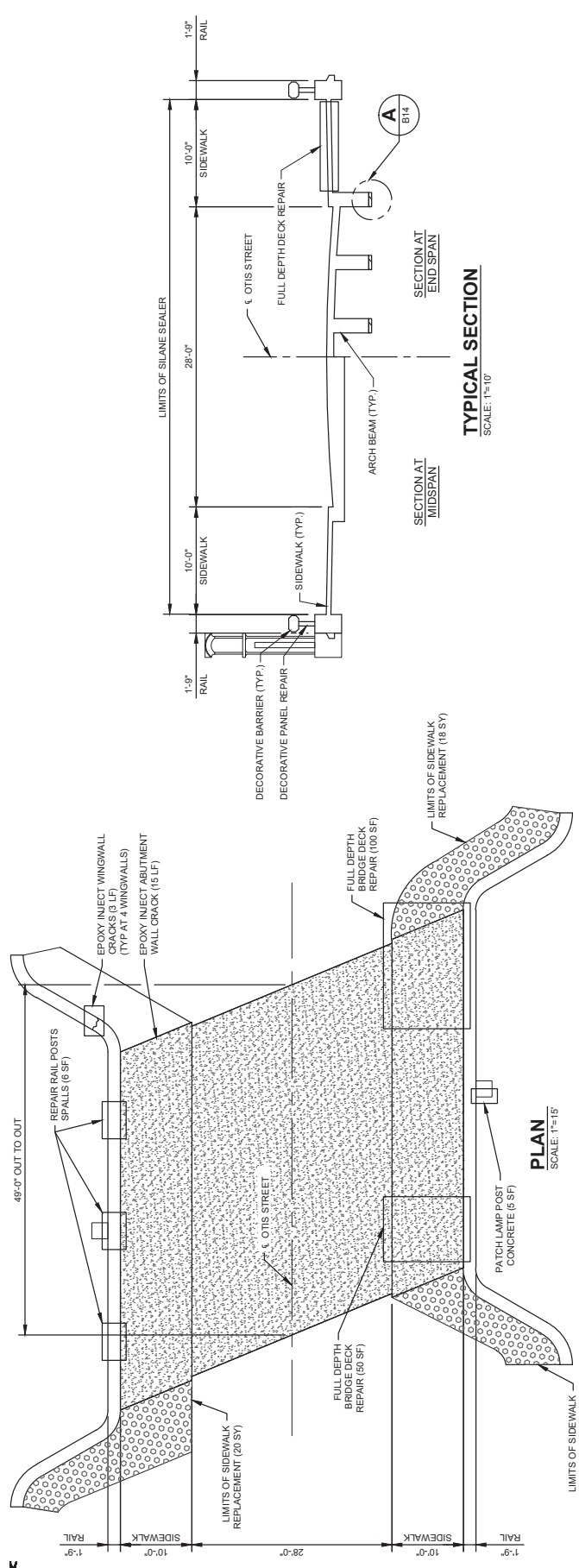
DAVID EVANS AND ASSOCIATES, Inc.
 608 N. Howard St., Ste. 400
 Spokane, WA 99201
 Phone: 509.327.6677

City of Walla Walla
 U.S. Department of Transportation
 Federal Highway Administration
 Washington State Department of Transportation
 A WONDERFUL PLACE TO LIVE WORK & PLAY

CITYWIDE PREVENTATIVE BRIDGE MAINTENANCE
 FEDERAL-AID NO. BHIM-9836(007)
MERRIAM STREET DETAILS
1 OF 2
 CITY OF WALLA WALLA WASHINGTON

PROJECT NO. BR-2501
 SHEET NO. 14 OF 34

B11



- WORK DESCRIPTION**
- PARTIAL DEPTH BRIDGE DECK REPAIR (4% DECK AREA, 100 SF)
 - FULL DEPTH BRIDGE DECK REPAIR (150 SF)
 - REMOVE LOOSE CONCRETE AND COAT EXPOSED REBAR
 - REPAIR GIRDER SPALLS
 - EPOXY REPAIR CRACKS
 - REPAIR BRIDGE RAILS
 - REPAIR ABUTMENT/WINGWALLS
 - REPAIR ARCH BEAMS
 - APPLY SILANE CONCRETE SEALER
 - REMOVE AND REPLACED SIDEWALK
- LEGEND**
- [Pattern] LIMITS OF DECK SOUNDING, DECK REPAIRS, AND SILANE SEALER
 - [Pattern] LIMITS OF SIDEWALK REPLACEMENT

SECTION
SCALE: 1"=15'

TYPICAL SECTION
SCALE: 1"=10'

PLAN
SCALE: 1"=15'



DESIGNED BY: J. LEWARTER
 DETAILLED BY: B. HERRON
 CHECKED BY: J. WARREN
 NO DATE REVISION

DAVID EVANS
 ARCHITECTS, INC.
 808 N. Howard St., Ste. 400
 Spokane, WA 99201
 Phone: 509.327.7877

City of Walla Walla
 U.S. Department of Transportation
 Federal Highway Administration
 A WONDERFUL PLACE TO LIVE
WORK PLAY

CITYWIDE PREVENTATIVE BRIDGE MAINTENANCE
 FEDERAL-AID NO. BHIM-9836(007)

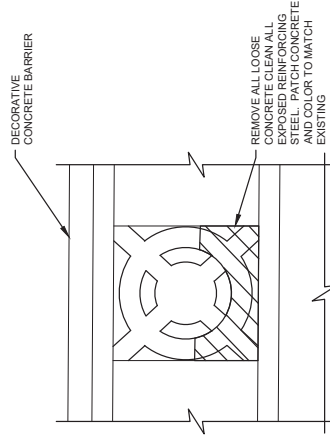
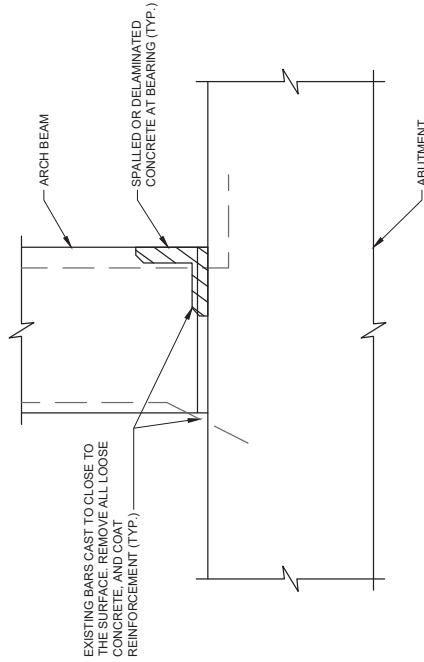
OTIS STREET LAYOUT

CITY OF WALLA WALLA WASHINGTON



TYPICAL FULL DEPTH DECK REPLACEMENT

TYPICAL ARCH BEAM BEARING REPAIR



DETAIL A

DETAIL B

DETAIL C

LEGEND

APPROXIMATE AREA OF REPAIR



DESIGNED BY: J. LEMASTER
 DETAILED BY: B. HERRON
 CHECKED BY: J. WARREN
 REVISION LOG
 NO DATE REVISION BY CK

DAVID EVANS & ASSOCIATES, Inc.
 808 N Howard St. Ste 400
 Spokane, WA 99201
 Phone: 509.327.8687

City of Walla Walla
 A WONDERFUL PLACE TO LIVE
 WORK PLAY

U.S. Department of Transportation
Federal Highway Administration
 Washington State
 Department of Transportation

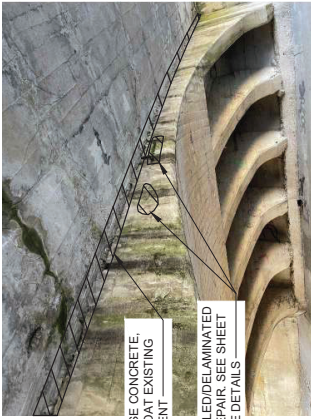
CITYWIDE PREVENTATIVE BRIDGE MAINTENANCE
 FEDERAL-AID NO. BHIM-9836(007)

OTIS STREET DETAILS 1 OF 2

PROJECT NO. BR-2501
 SHEET NO. 17 OF 34
B14

WASHINGTON

CITY OF WALLA WALLA



REMOVE LOOSE CONCRETE, CLEAN AND COAT EXISTING REINFORCEMENT

TYPICAL SPALLED/DELAMINATED CONCRETE REPAIR, SEE SHEET B20 FOR MORE DETAILS

TYPICAL BEAM HAUNCH SPALL



FULL DEPTH DECK REPLACEMENT, SEE SHEET B20 FOR REPAIR DETAILS

TYPICAL FULL DEPTH DECK REPLACEMENT



REINFORCEMENT CAST TO CLOSE TO SURFACE. REMOVE ALL LOOSE CONCRETE, CLEAN EXISTING REINFORCEMENT AND EPOXY COAT ALL EXPOSED STEEL

PRESSURE EPOXY INJECT CRACK

TYPICAL ABUTMENT CRACK AND STEEL CAST TO CLOSE TO SURFACE



CLEAN EXPOSED STEEL REINFORCEMENT AND PATCH CONCRETE, SEE SHEET B20

PRESSURE EPOXY INJECT CRACK (ALL 4 CORNERS) (TYP.)

TYPICAL DECORATIVE RAILING CRACK



REMOVE ALL LOOSE CONCRETE TO SOUND CONDITION, CLEAN ALL EXPOSED STEEL BEFORE PATCHING CONCRETE, SEE SHEET B20

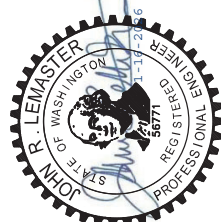
TYPICAL DECORATIVE BARRIER PANEL SPALL REPAIR

REMOVE ALL LOOSE CONCRETE TO SOUND CONDITION, CLEAN ALL EXPOSED STEEL BEFORE PATCHING CONCRETE, SEE SHEET B20

TYPICAL LAMP POST SPALL REPAIR

LEGEND

APPROXIMATE AREA OF REPAIR



DESIGNED BY: J. LEMASTER
 DETAILED BY: B. HERRON
 CHECKED BY: J. WARREN
 REVISION LOG
 NO DATE REVISION BY CK

DATE: 11/20/25 3:13 PM
 BY: Brennan Herron
 FILE: P:\WALLA\A00000120400C\DCSH\ETS\CS\Sheet\WALL12_STL_Otis Details 2.dwg

PC
DAVID EVANS
ASSOCIATES
 INC.
 608 N. HERRON ST. SUITE 400
 BOSTON, WA 98901
 PHONE: 509.737.8877

City of Walla Walla
 A WONDERFUL PLACE TO LIVE WORK PLAY
 U.S. Department of Transportation
 Federal Highway Administration
 Washington State
 Department of Transportation

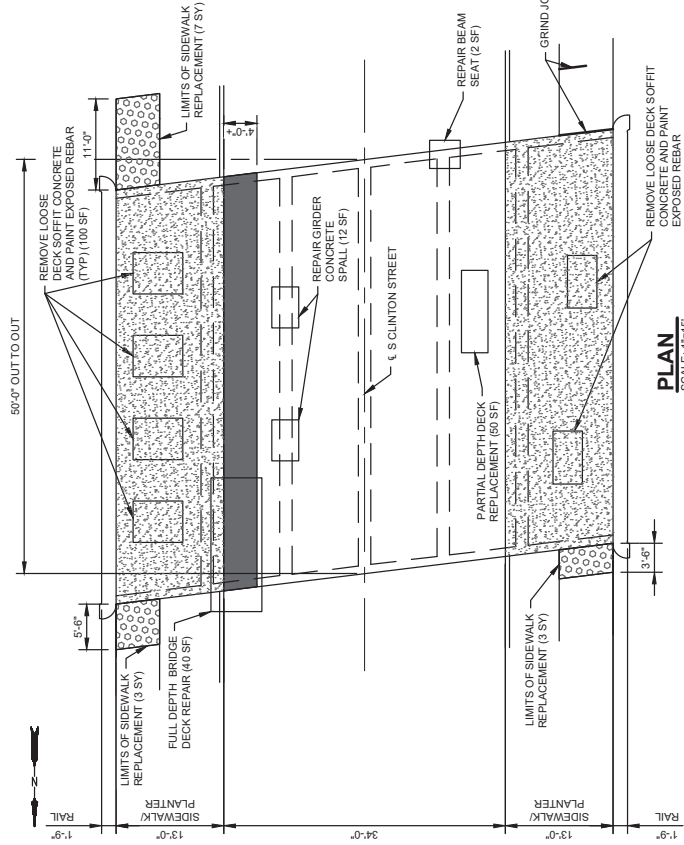
CITYWIDE PREVENTATIVE BRIDGE MAINTENANCE
 FEDERAL-AID NO. BHIM-9836(007)

OTIS STREET DETAILS 2 OF 2

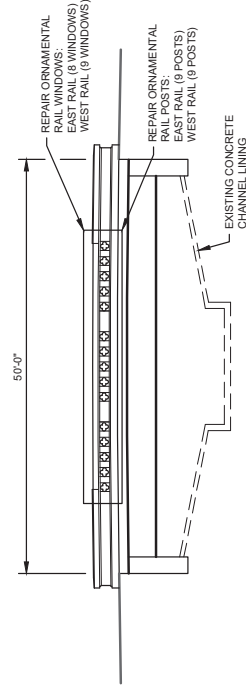
CITY OF WALLA WALLA

WASHINGTON

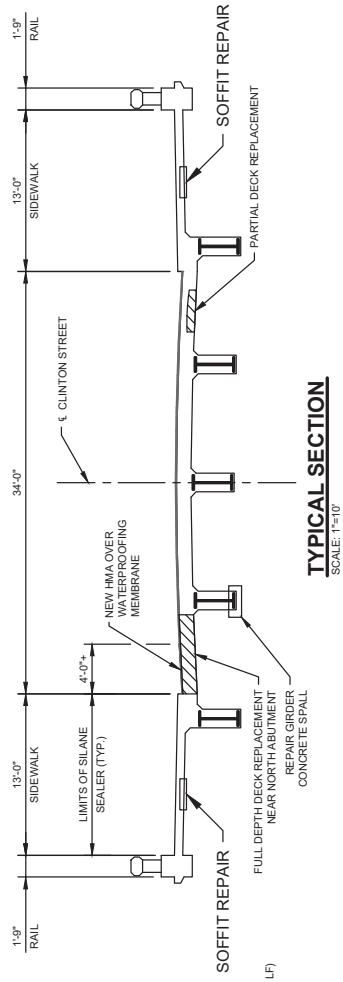
PROJECT NO. BR-2501
 SHEET NO. 18 OF 34
B15



PLAN
SCALE: 1"=15'



SECTION
SCALE: 1"=18'



TYPICAL SECTION
SCALE: 1"=10'

WORK DESCRIPTION

1. PARTIAL DEPTH BRIDGE DECK REPAIR (1% OF DECK AREA)
2. FULL DEPTH BRIDGE DECK REPAIR (40 SF)
3. REMOVE LOOSE CONCRETE AND PAINT STEEL EXPOSED REBAR FOR GIRDERS
4. REPAIR BRIDGE RAILS
5. REPAIR ORNAMENTAL SIDEWALK
6. APPLY SILANE CONCRETE SEALER
7. REMOVE AND REPLACE SIDEWALK
8. GRIND SIDEWALK JOINT

LEGEND

- LIMITS OF WATERPROOFING MEMBRANE AND ASPHALT OVERLAY
- ▨ LIMITS OF SILANE SEALER
- ▧ LIMITS OF SIDEWALK REPLACEMENT

CITY OF WALLA WALLA
A WONDERFUL PLACE TO LIVE
WORK PLAY

City of Walla Walla
U.S. Department of Transportation
Federal Highway Administration
Washington State
Department of Transportation

DAVID EVANS AND ASSOCIATES Inc.
608 N Howard St. Ste 400
Spokane, WA 99201
Phone 509.325.8877

DESIGNED BY: J. LEWISTER
DETAILED BY: B. HERRON
CHECKED BY: J. WARREN

REVISIONS
NO DATE REVISION BY/CK

PROJECT NO. BR-2501
SHEET NO. 19 OF 34
B16

CITYWIDE PREVENTATIVE BRIDGE MAINTENANCE
FEDERAL-AID NO. BHIM-9836(007)

S CLINTON STREET LAYOUT

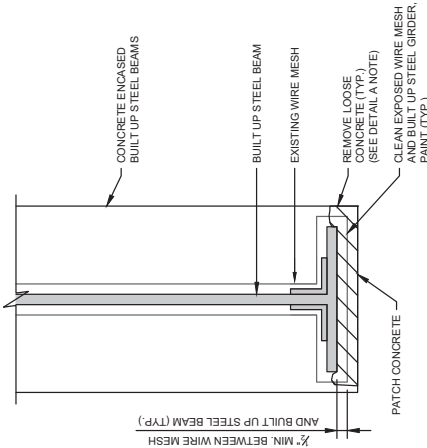
WASHINGTON
CITY OF WALLA WALLA





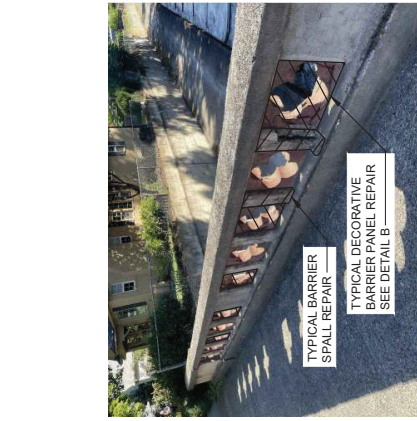
TYPICAL GIRDER SPALL REPAIR
SEE DETAIL A

TYPICAL GIRDER SPALL REPAIR



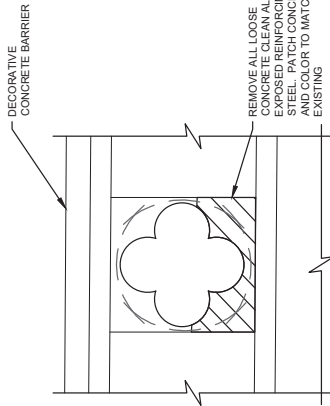
DETAIL A

NOTE: AS DIRECTED BY THE ENGINEER, ONLY REMOVE LOOSE AND CRUMBLING CONCRETE FROM BOTTOM OF STEEL BEAMS.



TYPICAL BARRIER RAIL SPALL REPAIR
TYPICAL DECORATIVE BARRIER PANEL REPAIR
SEE DETAIL B

TYPICAL BARRIER RAIL REPAIR



DETAIL B



GRIND AND REMOVE EXISTING HMA 4 FEET WIDE
PLACE WATER PROOF MEMBRANE AND PATCH HMA

FULL DEPTH DECK REPAIR SEE SHEET B20 FOR REPAIR DETAILS

FULL DEPTH DECK REPAIR



FULL DEPTH DECK REPAIR SEE SHEET B20 FOR REPAIR DETAILS

FULL DEPTH DECK REPAIR



TYPICAL GIRDER SPALL AT BEARING SEAT SEE DETAIL A FOR REPAIR DETAILS

CLEAN BEARING SEAT

TYPICAL GIRDER SPALL AT BEARING



REMOVE AND REPAIR ALL LOOSE CONCRETE. CLEAN EXPOSED REINFORCEMENT. SEE SHEET B20

TYPICAL ABUTMENT SPALL REPAIR

LEGEND

APPROXIMATE AREA OF REPAIR



DESIGNED BY: J. LEMASTER
 DETAILED BY: B. HERRON
 CHECKED BY: J. WARREN
 REVISION LOG
 NO DATE REVISION BY

PC
DAVID EVANS AND ASSOCIATES, Inc.
 808 N. Howard St., Ste 200
 Spokane, WA 99201
 Phone: 509.327.8877

City of Walla Walla
 U.S. Department of Transportation
 Federal Highway Administration
 A WONDERFUL PLACE TO LIVE WORK PLAY
 Washington State Department of Transportation

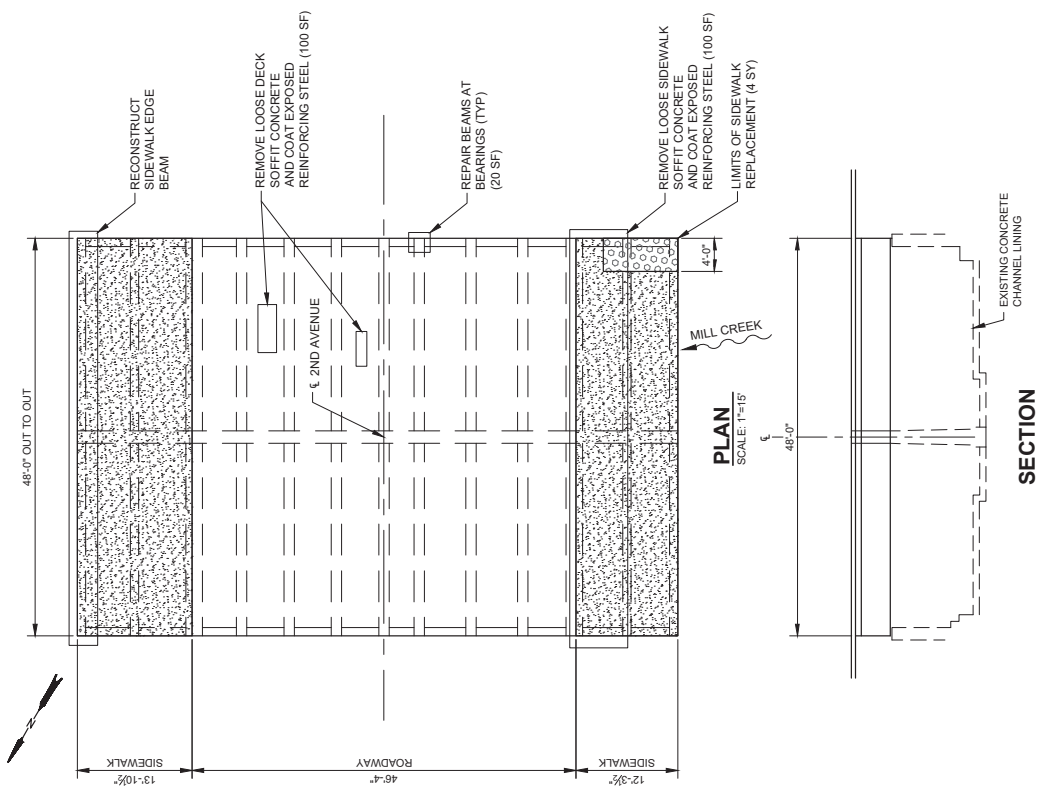
CITYWIDE PREVENTATIVE BRIDGE MAINTENANCE
 FEDERAL-AID NO. BHM-9886(007)

S CLINTON STREET DETAILS

CITY OF WALLA WALLA

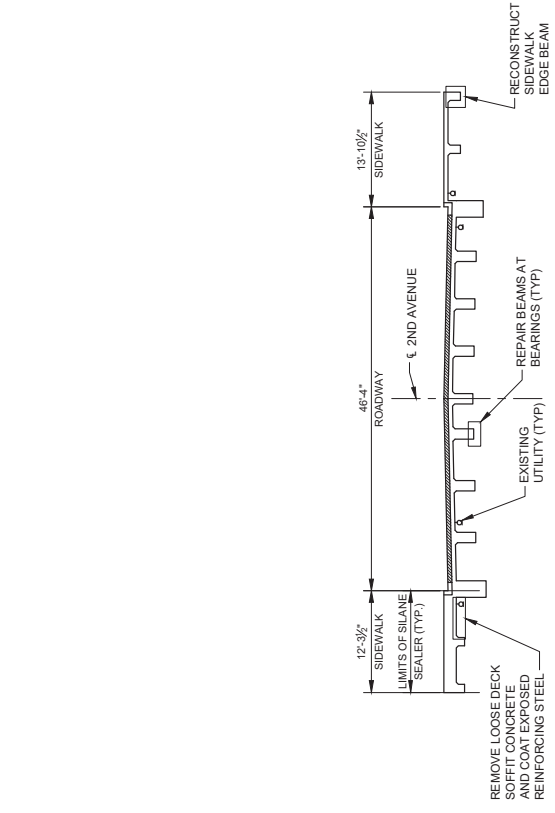
WASHINGTON

PROJECT NO. BR-2501
 SHEET NO. 20 OF 34
B17



PLAN
SCALE: 1"=15'

SECTION
SCALE: 1"=15'



TYPICAL SECTION
SCALE: 1"=15'

WORK DESCRIPTION

1. RECONSTRUCT SIDEWALK EDGE BEAM
2. REMOVE LOOSE DECK UNDERSIDE CONCRETE AND COAT EXPOSED REINFORCING STEEL
3. REPAIR BEAMS AT BEARINGS
4. APPLY SILANE SEALER TO SIDEWALKS
5. REMOVE AND REPLACE SIDEWALK

LEGEND

- LIMITS OF SILANE SEALER
- LIMITS OF SIDEWALK REPLACEMENT



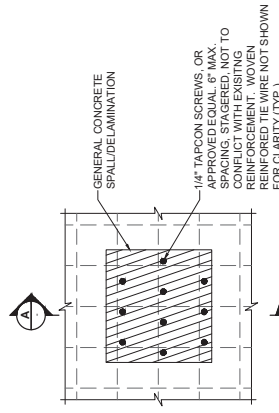
DESIGNED BY: J. LEMASTER
 DETAILED BY: B. HERRON
 CHECKED BY: J. WARREN
 REVISIONS:
 NO. DATE REVISION
 BY: CK

DAVID EVANS AND ASSOCIATES, Inc.
 608 N. Howard St., Ste. 200
 Spokane, WA 99201
 Phone: 509.327.8877

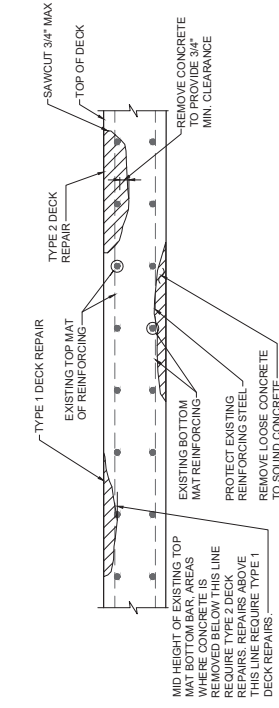
City of Walla Walla
 U.S. Department of Transportation
 Federal Highway Administration
 A WONDERFUL PLACE TO LIVE WORK PLAY
 Washington State Department of Transportation

CITYWIDE PREVENTATIVE BRIDGE MAINTENANCE
 FEDERAL-AID NO. BHIM-9836(007)
2ND AVENUE LAYOUT
 CITY OF WALLA WALLA WASHINGTON

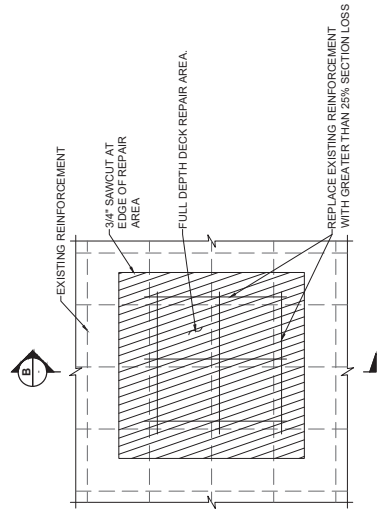
PROJECT NO. BR-2501
 SHEET NO. 21 OF 34
B18



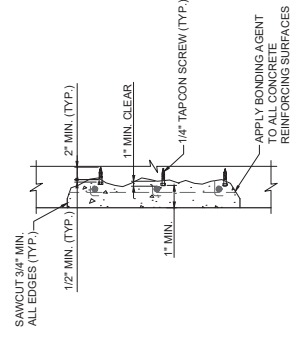
GENERAL SPALL/DELAMINATION ELEVATION



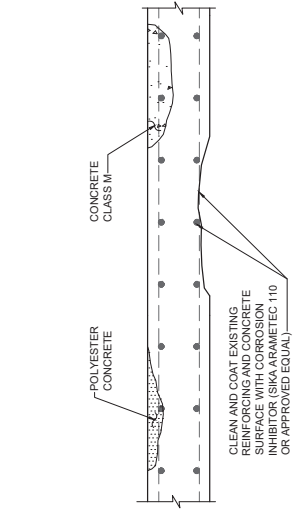
PARTIAL DECK REMOVAL DETAIL
(OVERLAY NOT SHOWN FOR CLARITY)



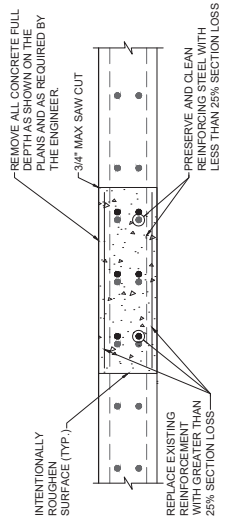
FULL DEPTH DECK REPAIR DETAIL



SECTION A



PARTIAL DECK REPAIR DETAIL
(OVERLAY NOT SHOWN FOR CLARITY)



SECTION B



DESIGNED BY: J. LEMASTER
 CHECKED BY: B. HERRON
 J. WARREN
 REVISIONS:
 NO DATE REVISION
 BY: CK

DAVID EVANS
 AND ASSOCIATES, Inc.
 A WONDERFUL PLACE TO
 LIVE WORK PLAY
 808 Howard St. Ste. 500
 Spokane, WA 99201
 Phone: 509.327.8877

City of Walla Walla
 U.S. Department of Transportation
 Federal Highway Administration
 Washington State
 Department of Transportation

CITYWIDE PREVENTATIVE BRIDGE MAINTENANCE
 FEDERAL-AID NO. BHIM-9836(007)

CONCRETE REPAIR DETAILS

CITY OF WALLA WALLA

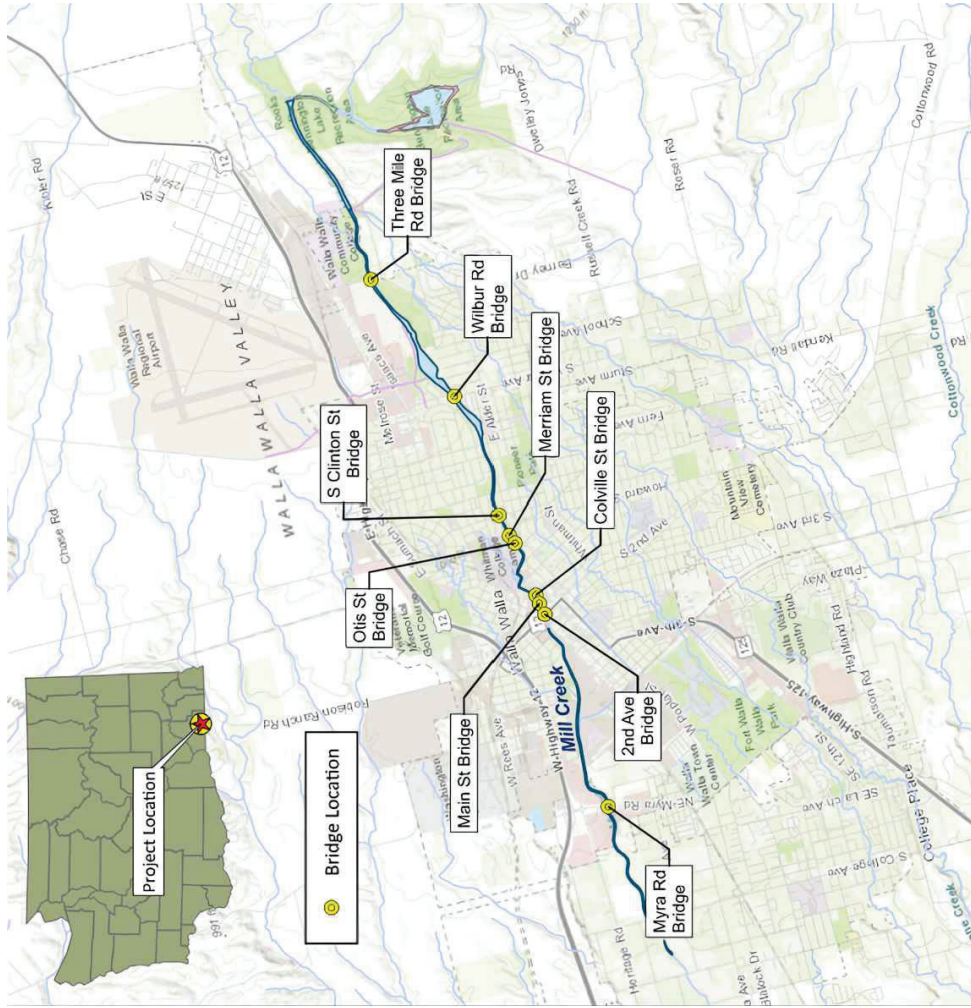
WASHINGTON

PROJECT NO. BR-2501
 SHEET NO. 23 OF 34

B20

NOTES

1. ALL SIGNS TO BE BLACK AND WHITE UNLESS DESIGNATED AS BLACK ON ORANGE (B/O).
2. PROVIDE AUDIBLE WARNING DEVICES WITH ALL PEDESTRIAN DETOUR AND SIDE WALK CLOSURE SIGNS.
3. THE TRAFFIC CONTROL PLAN SHOWN IN THESE CONTRACT DOCUMENTS IS THE MINIMUM REQUIRED AND SHALL BE SUPPLEMENTED WITH ADDITIONAL TRAFFIC CONTROL MEASURES AS REQUIRED DURING THE COURSE OF WORK.
4. ALL TRAFFIC CONTROL DEVICES SHALL BE IN ACCORDANCE WITH THE LATEST EDITION OF THE MUTCD.
5. TWO FLASHING WARNING LIGHTS SHALL BE USED TO MARK EACH BARRICADE AT NIGHT.
6. ADVANCED WARNING SIGNS SHALL BE SPACED 100 FEET MINIMUM.



CITYWIDE PREVENTATIVE BRIDGE MAINTENANCE
 FEDERAL-AID NO. BHIM-9836(007)

TRAFFIC CONTROL - VICINITY MAP

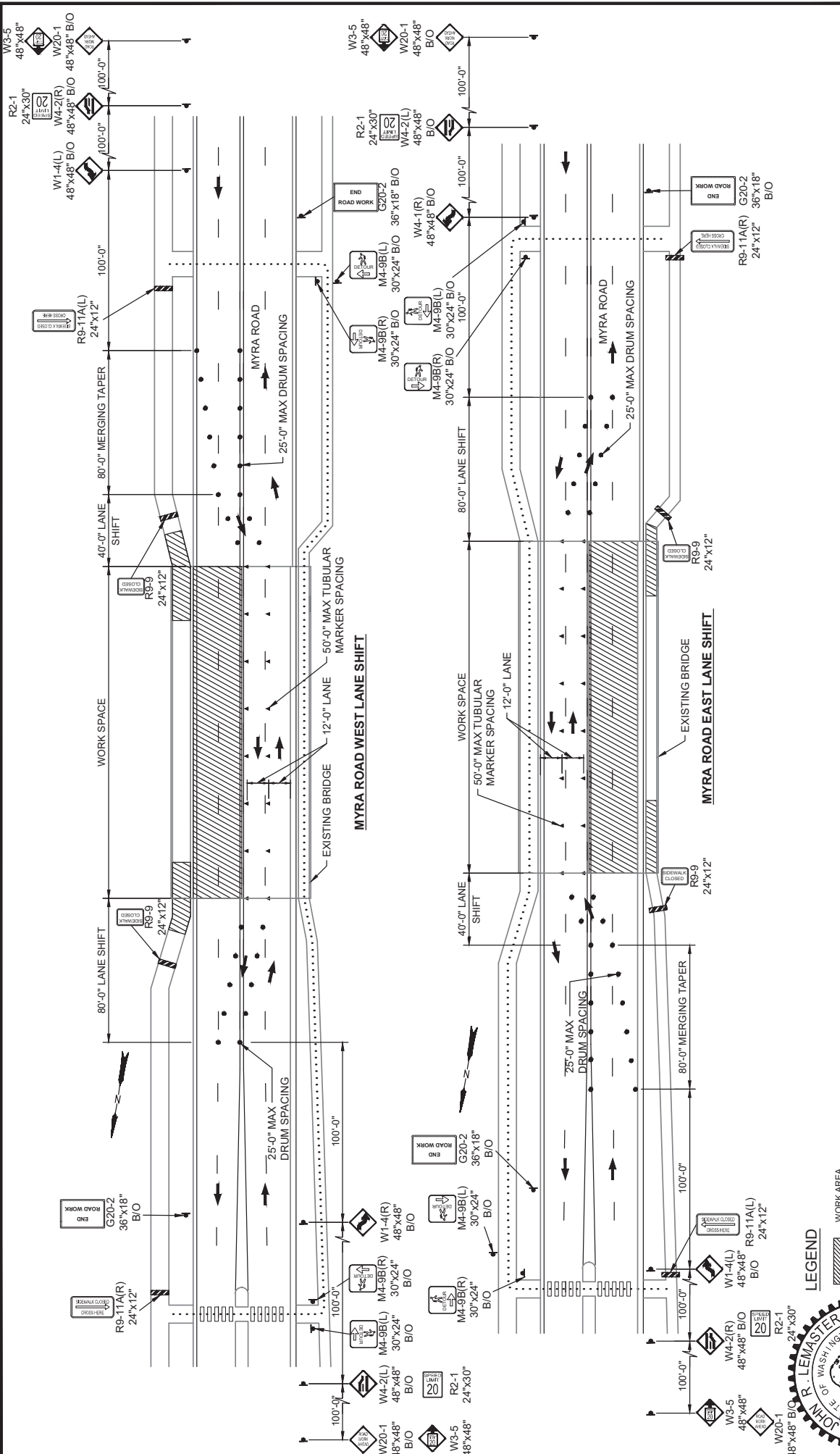
CITY OF WALLA WALLA WASHINGTON

City of Walla Walla U.S. Department of Transportation
 Federal Highway Administration
 A WONDERFUL PLACE TO LIVE WORK PLAY
 Department of Transportation

DAVID EVANS AND ASSOCIATES, Inc.
 604 N Howard St. Ste 200
 Spokane, WA 99201
 Phone 509.327.9877

DESIGNED BY: J. LEMASTER	BY: []
DETAILED BY: B. HERRON	BY: []
CHECKED BY: A. WELN	BY: []
REVISIONS	BY: []
NO DATE REVISION	BY: []





DESIGNED BY: J. LEWISTER
 DETAILED BY: B. HERRON
 CHECKED BY: A. WILLEN
 REVISION LOG
 NO DATE REVISION

PROJECT NO. BR-2501
 SHEET NO. 25 OF 34
TC2

CITY OF WALLA WALLA
 A WONDERFUL PLACE TO LIVE
 LIVE WORK PLAY

U.S. Department of Transportation
 Federal Highway Administration
 Washington State
 Department of Transportation

CITYWIDE PREVENTATIVE BRIDGE MAINTENANCE
 FEDERAL-AID NO. BHM-9836(007)

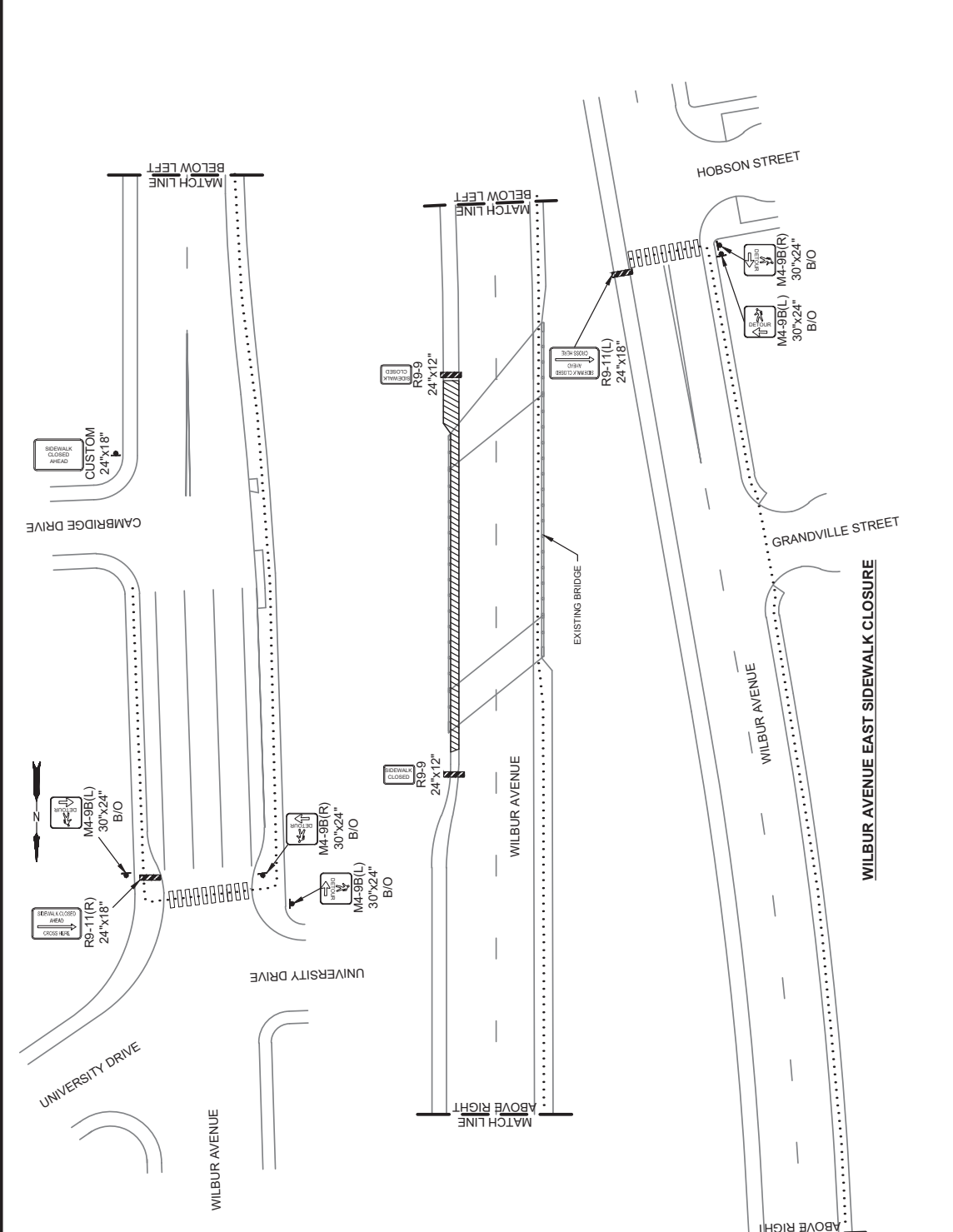
TRAFFIC CONTROL - MYRA ROAD

CITY OF WALLA WALLA

LEGEND

- WORK AREA
- DRUM
- SIGN LOCATION & ORIENTATION
- DETOUR PEDESTRIAN ROUTE
- TYPE 3 BARRICADE
- TUBULAR MARKERS

JOHN R. LEWISTER
 STATE OF WASHINGTON
 REGISTERED PROFESSIONAL ENGINEER
 56771



WILBUR AVENUE EAST SIDEWALK CLOSURE
 FEDERAL-AID NO. BHM-9836(007)
TRAFFIC CONTROL - WILBUR AVENUE
 CITY OF WALLA WALLA WASHINGTON

CITYWIDE PREVENTATIVE BRIDGE MAINTENANCE
 FEDERAL-AID NO. BHM-9836(007)

City of Walla Walla
 U.S. Department of Transportation
 Federal Highway Administration
 LIVE WORK PLAY
 A WONDERFUL PLACE TO LIVE
 WASHINGTON STATE
 Department of Transportation

DAVID EVANS
 AND ASSOCIATES, Inc.
 608 N Howard St. Ste 200
 Spokane, WA 99201
 Phone 509.327.8877

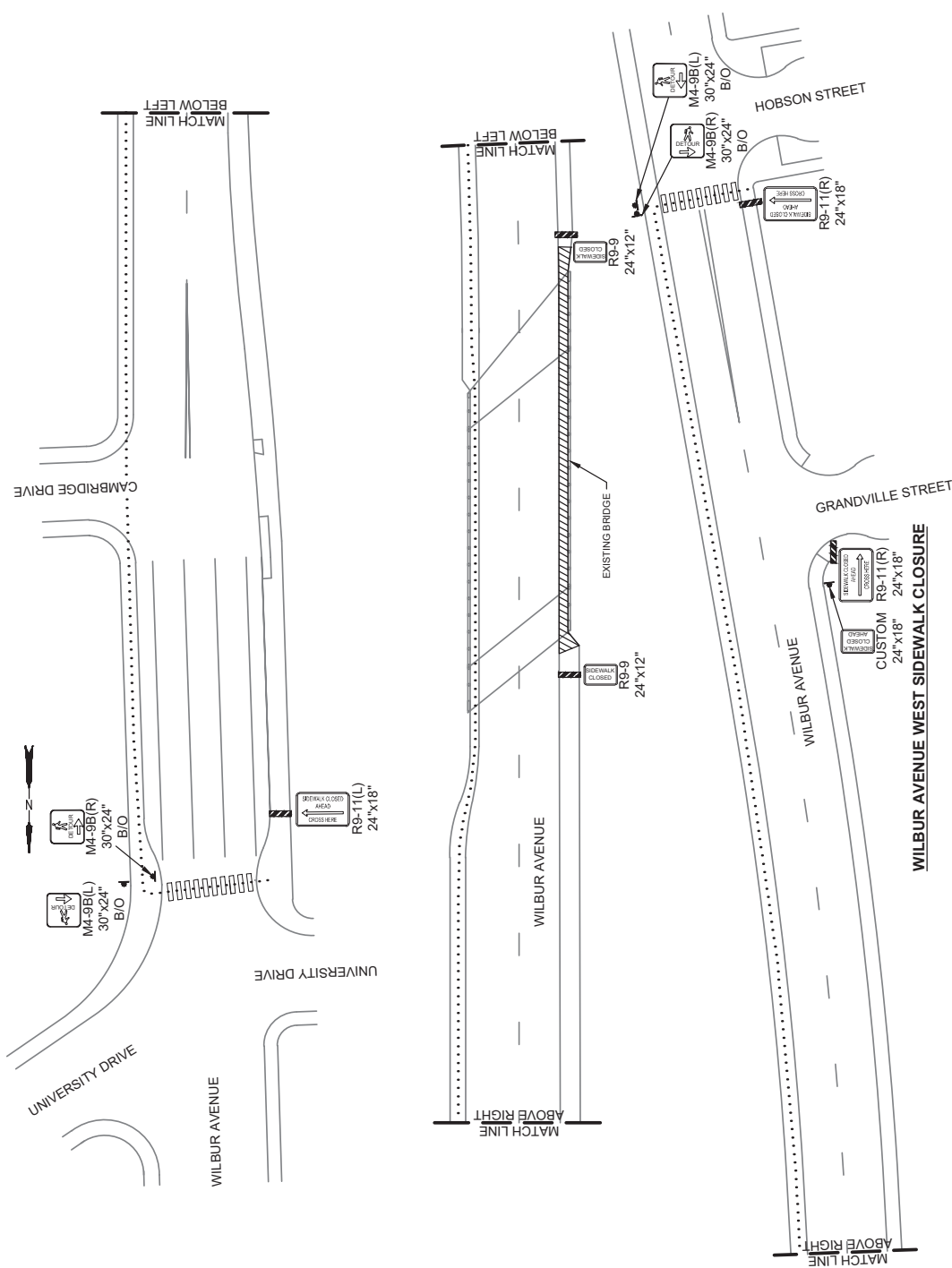
DESIGNED BY: J. LEMASTER
 DETAILED BY: B. HERRON
 CHECKED BY: A. WILSON
 REVISIONS:
 NO DATE REVISION BY

WORK AREA
 SIGN LOCATION & ORIENTATION
 DETOUR PEDESTRIAN ROUTE
 TYPE 3 BARRICADE



PROJECT DATE: 1/15/2016 4:20 PM
 BY: Brennan Herron
 FILE: P:\WALLA\A0000012\4000\CAD\SHETS\TMC\BR-11-TC3_WALLA\A0000012.dwg

PROJECT NO. BR-2501
 SHEET NO. 26 OF 34
TC3



LEGEND

- WORK AREA
- SIGN LOCATION & ORIENTATION
- DETOUR PEDESTRIAN ROUTE
- TYPE 3 BARRICADE



DESIGNED BY: J. LEMASTER
 DETAILED BY: B. HERRON
 CHECKED BY: A. WILSON
 REVISION LOG
 NO DATE REVISION
 BY: CK

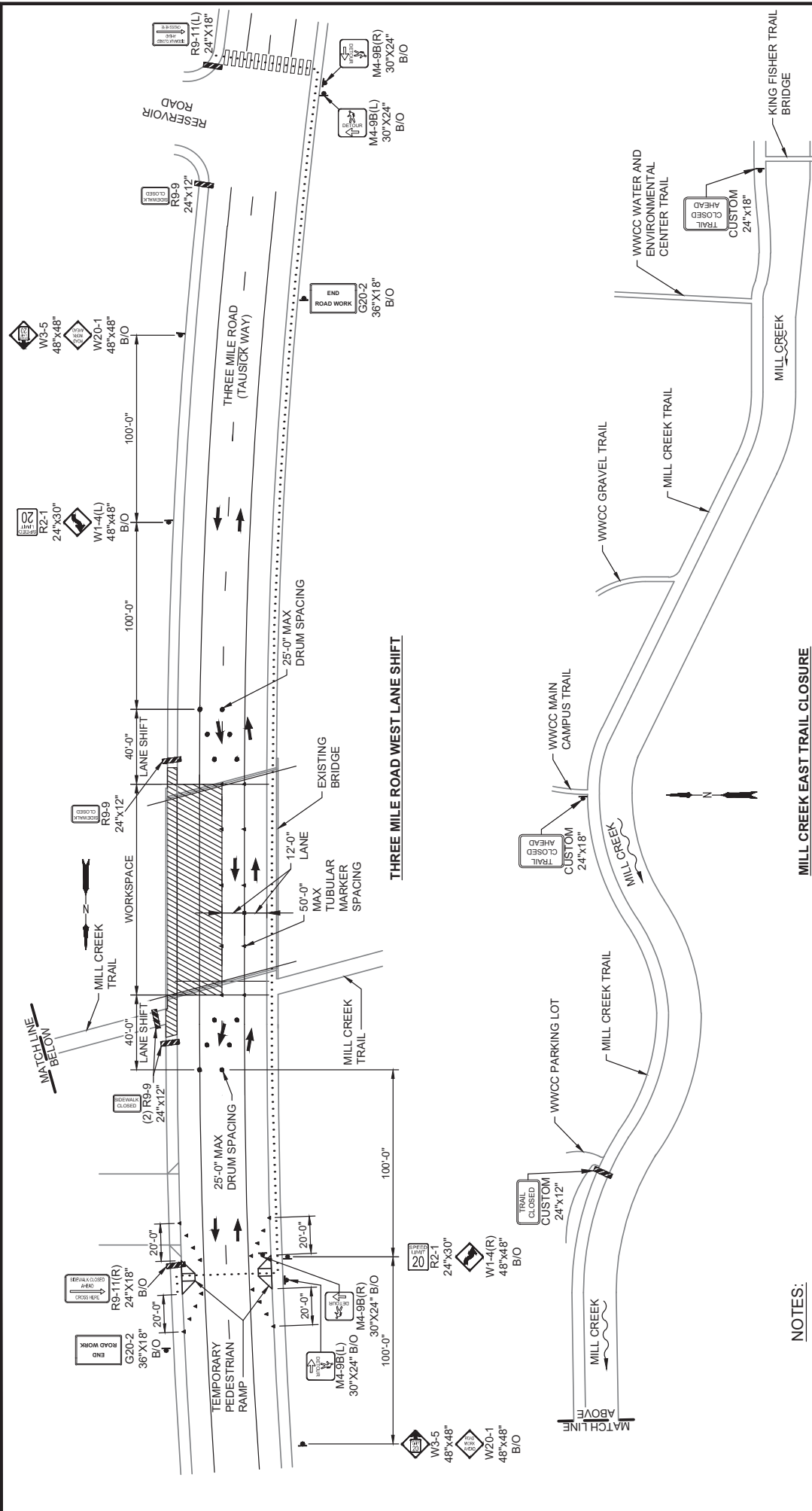
DAVID EVANS
 AND ASSOCIATES, Inc.
 808 N. Howard St. Ste. 200
 Spokane, WA 99201
 Phone: 509.325.7877

City of Walla Walla
 U.S. Department of Transportation
 Federal Highway Administration
 A WONDERFUL PLACE TO LIVE
 WORK PLAY

Washington State
 Department of Transportation

CITYWIDE PREVENTATIVE BRIDGE MAINTENANCE
 FEDERAL-AID NO. BHIM-9836(007)
TRAFFIC CONTROL - WILBUR AVENUE
 CITY OF WALLA WALLA WASHINGTON

PROJECT NO. BR-2501
 SHEET NO. 27 OF 34
TC4



NOTES:

- 1. TEMPORARY SIDEWALK RAMPS DETAILS ON SHEET TC11

LEGEND

- WORK AREA
- DRUM
- SIGN LOCATION & ORIENTATION
- DETOUR PEDESTRIAN ROUTE
- TYPE 3 BARRICADE
- TUBULAR MARKERS



THREE MILE ROAD WEST LANE SHIFT

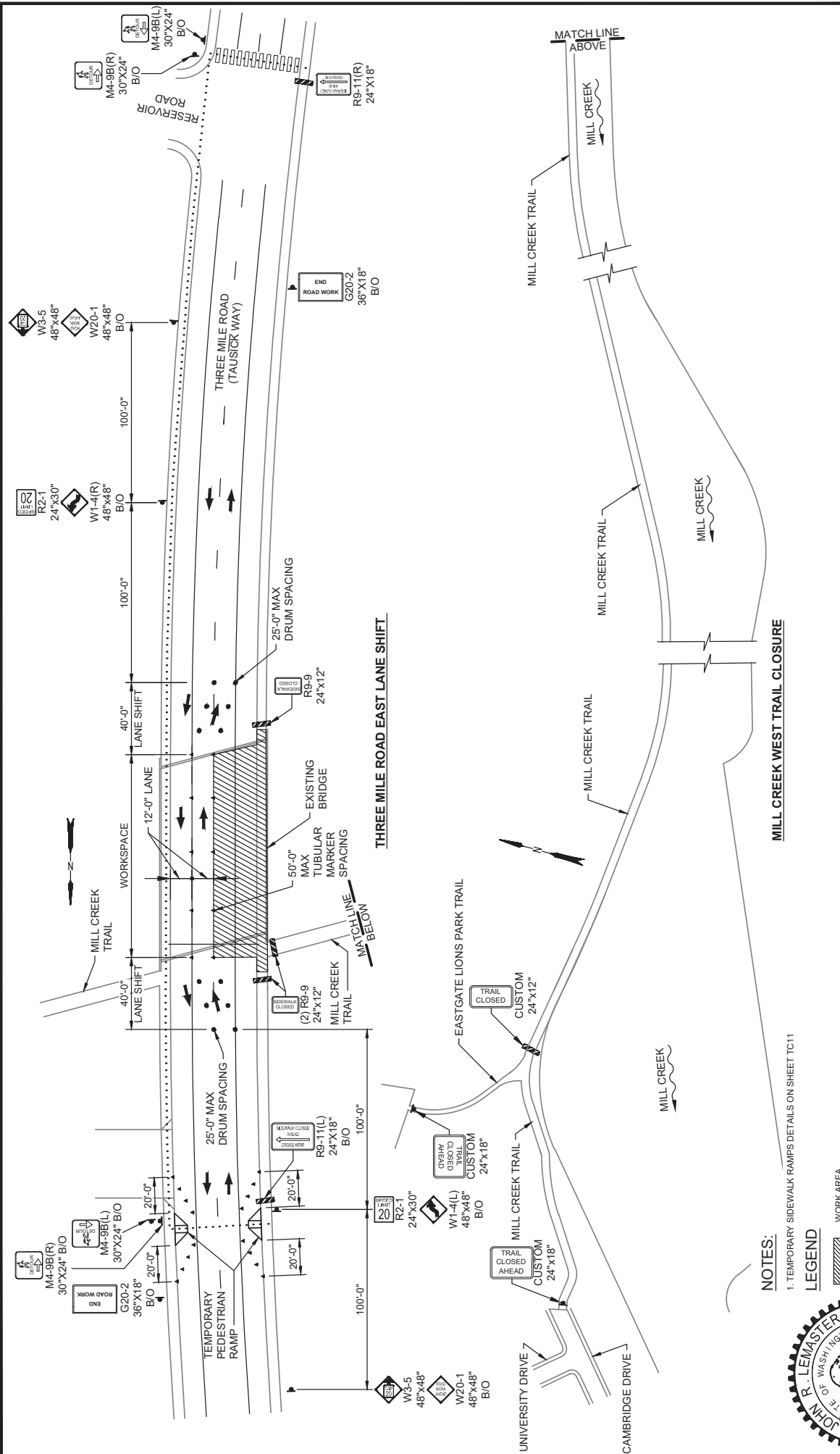
MILL CREEK EAST TRAIL CLOSURE

PROJECT NO. BR-2501
 SHEET NO. 28 OF 34
TC5
 WASHINGTON

CITY OF WALLA WALLA
 U.S. Department of Transportation
 Federal Highway Administration
 A WONDERFUL PLACE TO LIVE WORK PLAY
DAVID EVANS AND ASSOCIATES Inc.
 808 N. Howard St., Ste. 200
 Spokane, WA 99201
 Phone: 509.325.8787

DESIGNED BY: J. LEMASTER
 DETAILED BY: B. HERRON
 CHECKED BY: A. WILEN
 REVISIONS:
 NO DATE REVISION BY/CK

CITYWIDE PREVENTATIVE BRIDGE MAINTENANCE
 FEDERAL-AID NO. BHM-9836(007)
TRAFFIC CONTROL - THREE MILE ROAD
 CITY OF WALLA WALLA



DESIGNED BY: J. LEWARTER
DETAILED BY: B. HERRON
CHECKED BY: A. WELN
REVISIONS:
 NO DATE REVISION BY/CK

PROJECT NO.: BR-2501
SHEET NO.: 29 OF 34
TC6

CITYWIDE PREVENTATIVE BRIDGE MAINTENANCE
 FEDERAL-AID NO. BHIM-9836(007)

TRAFFIC CONTROL - THREE MILE ROAD

CITY OF WALLA WALLA WASHINGTON

City of Walla Walla
 U.S. Department of Transportation
 Federal Highway Administration

DAVID EVANS AND ASSOCIATES Inc.
 808 N Howard St. Ste 200
 Spokane, WA 99201
 Phone: 509.325.8787

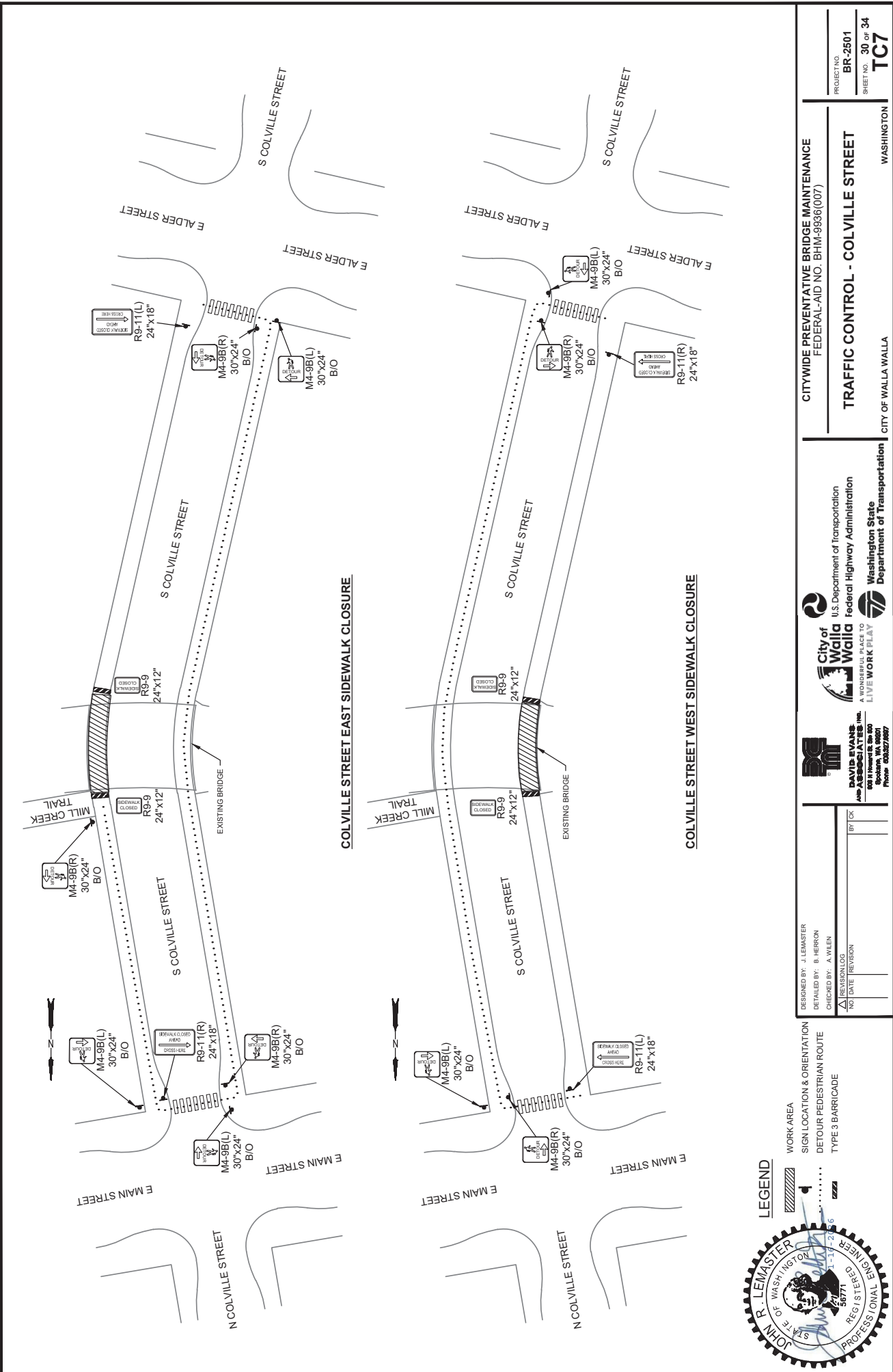
WASHINGTON STATE
 Department of Transportation

NOTES:

- TEMPORARY SIDEWALK RAMPS DETAILS ON SHEET TC11

LEGEND

- WORK AREA
- DRUM
- SIGN LOCATION & ORIENTATION
- DETOUR PEDESTRIAN ROUTE
- TYPE 3 BARRICADE
- TUBULAR MARKERS



PROJECT NO. BR-2501
 SHEET NO. 30 OF 34
TC7
 CITY OF WALLA WALLA
 WASHINGTON
TRAFFIC CONTROL - COLVILLE STREET
 FEDERAL-AID NO. BHIM-9836(007)
 CITYWIDE PREVENTATIVE BRIDGE MAINTENANCE

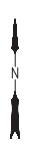
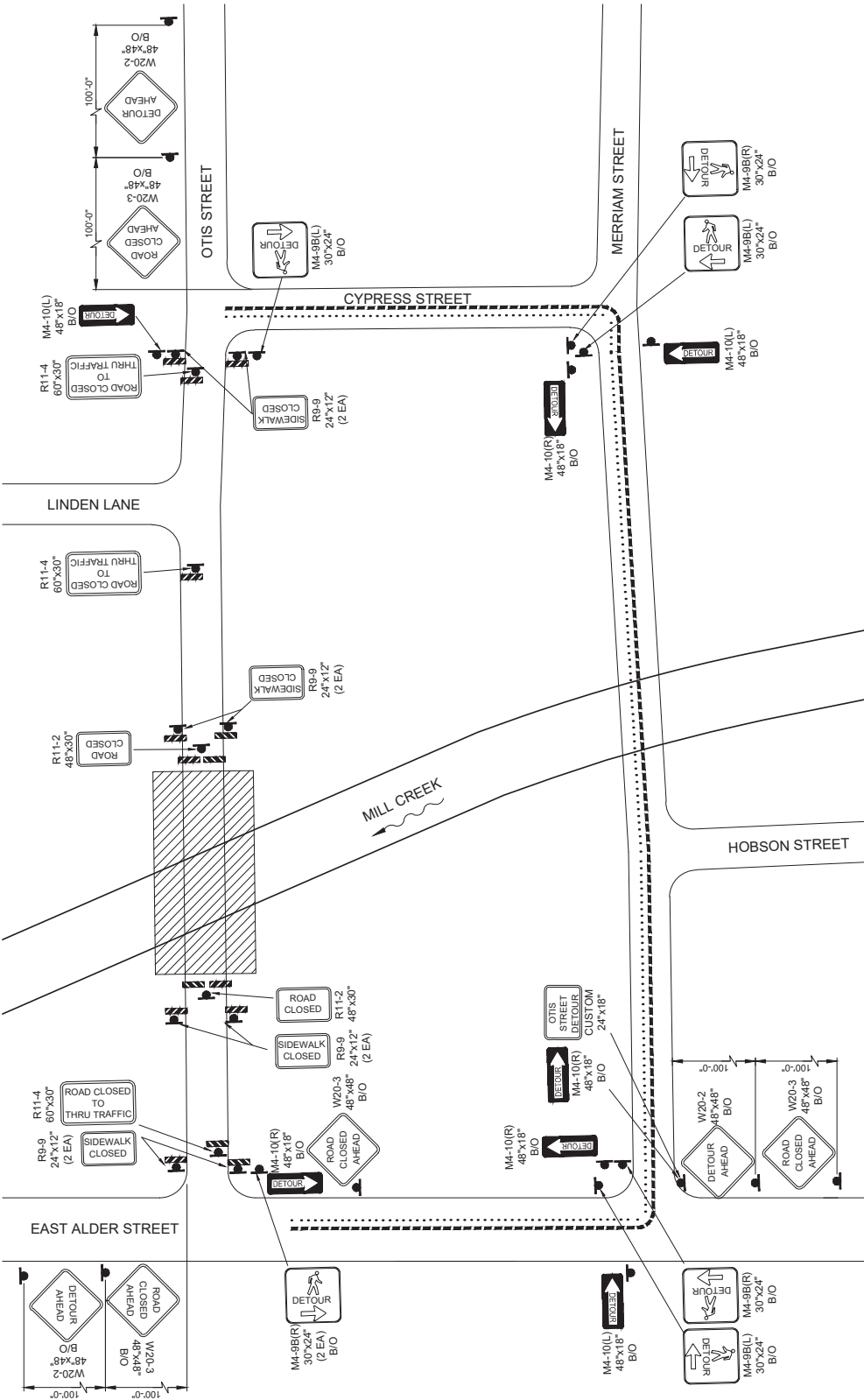
U.S. Department of Transportation
 Federal Highway Administration
 Washington State
 Department of Transportation
 LIVE WORK PLAY
 A WONDERFUL PLACE TO
 LIVE WORK PLAY
 City of Walla Walla
 A WONDERFUL PLACE TO
 LIVE WORK PLAY
 City of Walla Walla
 U.S. Department of Transportation
 Federal Highway Administration
 Washington State
 Department of Transportation

DESIGNED BY: J. LEMASTER
 DETAILED BY: B. HERRON
 CHECKED BY: A. WILEN
 REVISION LOG
 NO DATE REVISION
 BY: CK

WORK AREA
 SIGN LOCATION & ORIENTATION
 DETOUR PEDESTRIAN ROUTE
 TYPE 3 BARRICADE
LEGEND
 JOHN R. LEMASTER
 STATE OF WASHINGTON
 PROFESSIONAL ENGINEER
 REG. NO. 56771
 11/12/2025 4:22 PM
 By: Brennan Heron
 File: P:\W\W\A\A\0000012400C\DC\SHETS\T\T8\BRH1-TC7_M\A\A0000012.dwg

LEGEND

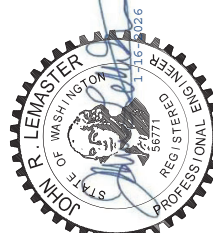
-  WORK AREA
-  DETOUR ROUTE
-  PEDESTRIAN DETOUR ROUTE
-  SIGN LOCATION AND ORIENTATION
-  TYPE 3 BARRICADE

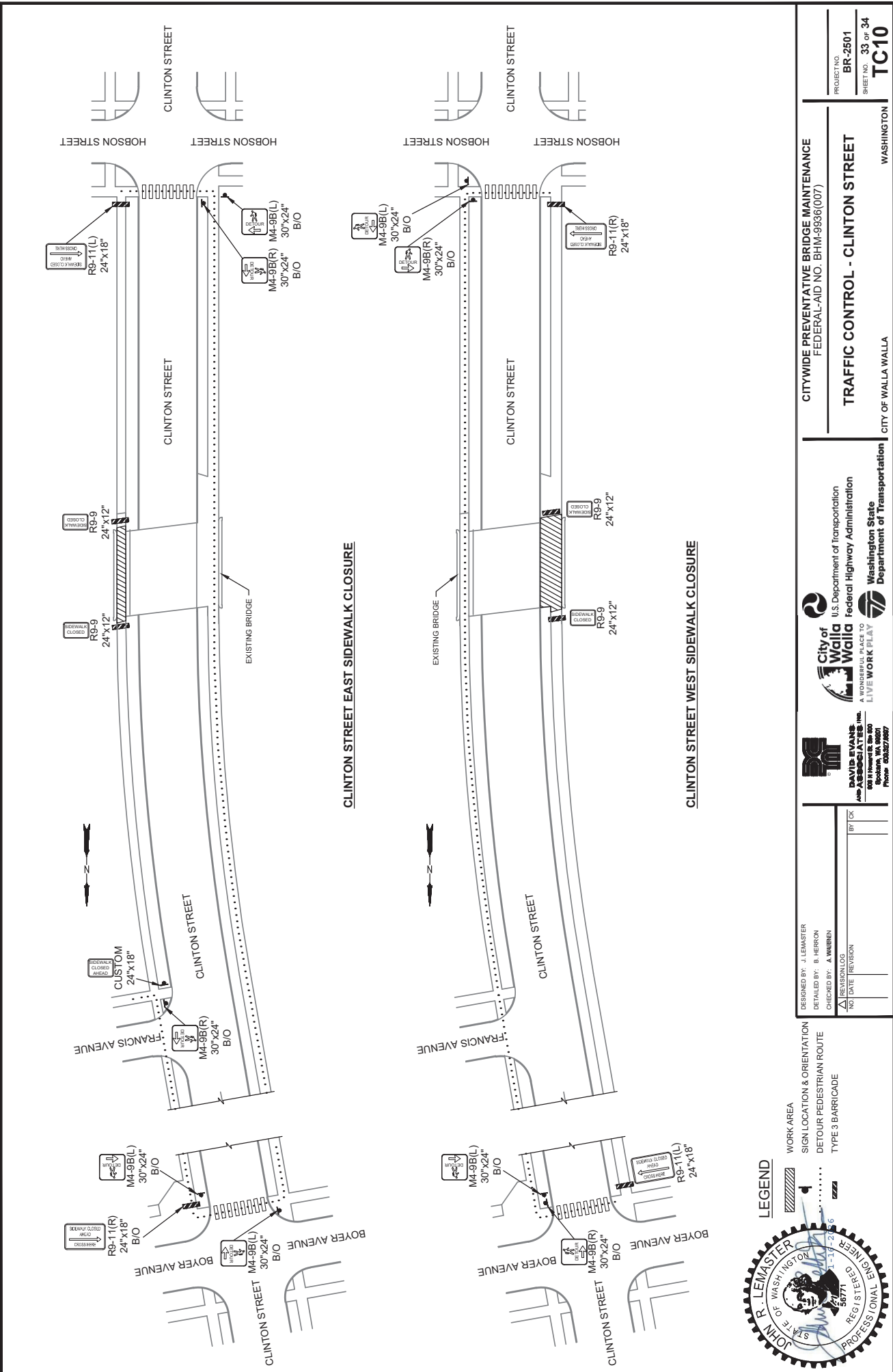


CITYWIDE PREVENTATIVE BRIDGE MAINTENANCE
 FEDERAL-AID NO. BHM-9836(007)
TRAFFIC CONTROL - OTIS STREET
 WASHINGTON

CITY OF WALLA WALLA
 U.S. Department of Transportation
 Federal Highway Administration
 A WONDERFUL PLACE TO LIVE WORK PLAY
 WASHINGTON STATE
 Department of Transportation

DESIGNED: J. LEMASTER, ER
 DETAILED: B. B. HERRON, ON
 CHECKED: B. A. WILEN
 REVIEWED: []
 NO. DATE (PERSON)
 BY: []





City of Walla Walla
 U.S. Department of Transportation
 Federal Highway Administration
 LIVE WORK PLAY
 A WONDERFUL PLACE TO
 WASHINGTON STATE
 Department of Transportation
DAVID EVANS AND ASSOCIATES Inc.
 608 N. Howard St. Ste. 400
 Spokane, WA 99201
 Phone: 509.325.8877

DESIGNED BY: J. LEMASTER	BY: []
DETAILED BY: B. HERRON	DATE: []
CHECKED BY: A. WAREEN	REVISIONS:
NO DATE REVISION	

LEGEND
 WORK AREA
 SIGN LOCATION & ORIENTATION
 DETOUR PEDESTRIAN ROUTE
 TYPE 3 BARRICADE

