



**FIRST ADDENDUM TO INVITATION TO BID
FOR THE DURHAM WRRF ODOR CONTROL PHASE 3 HEADWORKS
PROJECT NO. 7202**

CLEAN WATER SERVICES

ISSUED: APRIL 1, 2026

Clean Water Services' Invitation to Bid for the Durham WRRF Odor Control Phase 3 Headworks Project No. 7202 dated March 9, 2026 (ITB) is hereby amended as follows:

1. Drawings

- a. Delete Keynote 4 on Drawing 005-CD-101 and replace it with the following:
"4. POTHOLE (QTY 2 POTHOLES) TO VERIFY THE DEPTH OF FORCE MAINS BELOW THE BIOFILTER STRUCTURE."
- b. Add Drawings 200-ED-250, 200-E-250, 900-ED-660, and 900-E-660 included in Exhibit A of this Addendum.

2. Specifications

- a. Delete the following section and replace it with the section included in Exhibit B of this Addendum:
 1. Section 01330 Submittal Procedures
- b. Delete Part 2.04.C.1.b.2) and 2.04.C.2.b.2) in Section 15202.
- c. Delete Part 2.04.C.4.b.1) in Section 15202 and replace it with the following:
"1) Hayward; TBH Series True Union."
- d. Delete Part 2.04.F.1.b.3) and 4) in Section 15202.
- e. Delete Part 2.04.A.4.b. and c. in Section 15205 and replace them with the following:
"b. Straps: Stainless Steel
c. Hex Nuts and Washers: Stainless Steel"

Except as modified in this Addendum, the ITB will remain in effect as originally written.

Clarifications which do not modify the ITB are as follows:

1. The pre-bid conference sign-in sheet and slides are included in Exhibit C of this Addendum for reference.
2. Summary description of Work shown in the four new Drawings added per this Addendum:

Remove and replace the existing galvanized rigid conduit with new PVC-coated rigid conduit within the Headworks Grit Dumpster Room. Remove and replace conductors from the equipment and devices shown in the Drawings from the Headworks Grit Dumpster Room to the Lower Electrical Room.

END OF ADDENDUM

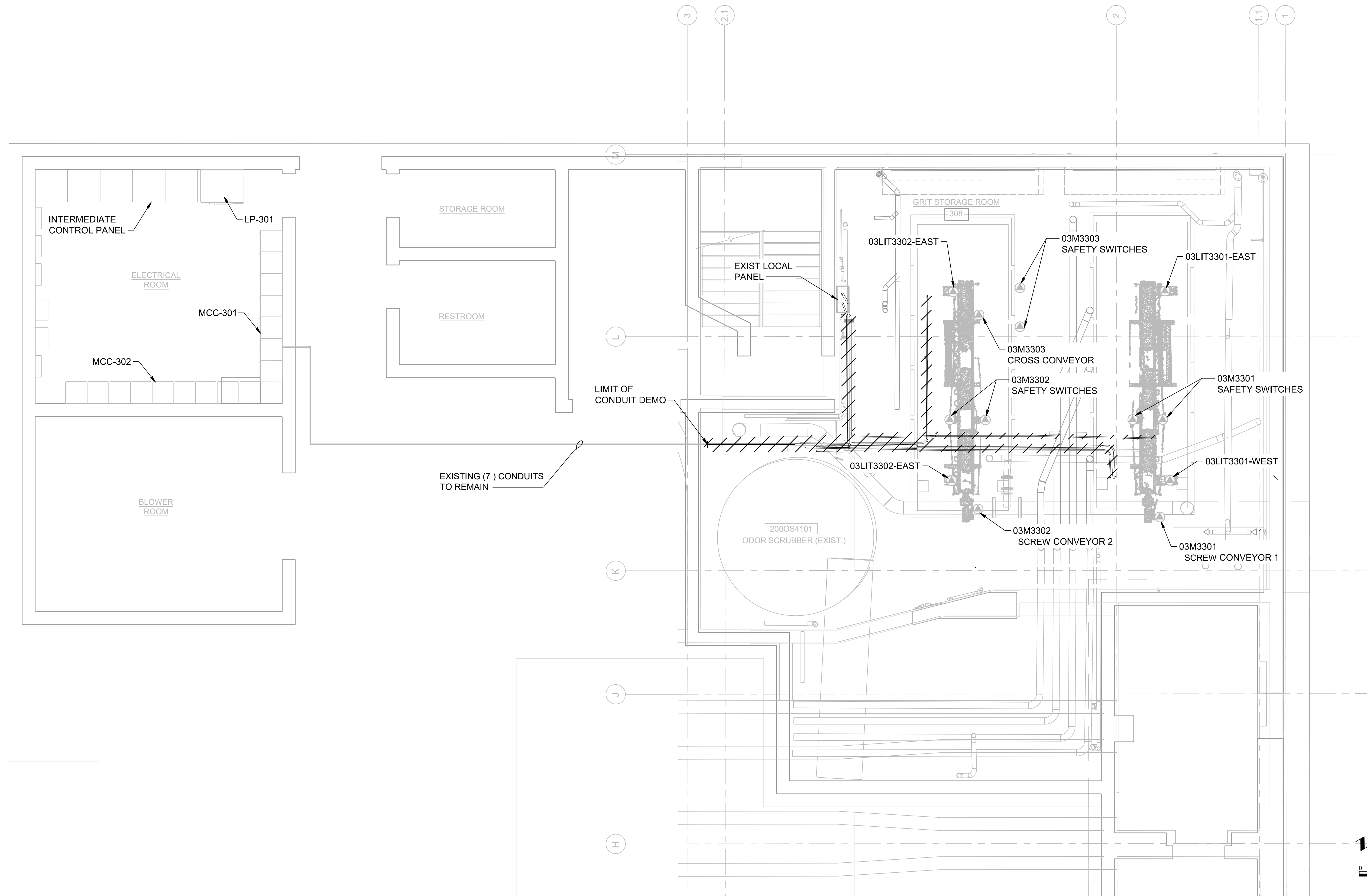
EXHIBIT A

GENERAL SHEET NOTES

- COORDINATE WORK WITH REQUIREMENTS LISTED IN SECTION 01140 WORK RESTRICTIONS AND SECTION 01324 CONSTRUCTION SEQUENCE.
- CONDITIONS SHOWN ON THE PLANS RELATIVE TO THE WORK BEING PERFORMED ARE BASED ON THE BEST INFORMATION AVAILABLE BUT ARE SUBJECT TO VERIFICATION. VERIFY LOCATION AND ELEVATIONS OF EQUIPMENT DUCTS, PIPING AND OTHER COMPONENTS TO BE CROSSED OR CONNECTED PRIOR TO BEGINNING NEW CONDUIT INSTALLATIONS. CORRECT DEFICIENCIES CAUSED BY FAILURE TO PERFORM SUCH VERIFICATIONS AT NO COST TO OWNER. IMMEDIATELY NOTIFY OWNER OF CONDITIONS IN CONFLICT WITH DETAILS AND OR PLANS.
- NOT ALL CONDUIT SHOWN TO EQUIPMENT / DEVICE. CONTRACTOR TO FIELD VERIFY.

SHEET KEYNOTES

- DEMOLISH EXISTING RGS CONDUIT WITHIN THE GRIT DUMPSTER ROOM, BETWEEN FIELD DEVICE AND CONDUIT COUPLING AT NORTH WALL WHERE TRANSITIONS TO PVC COATED RIGID CONDUIT.
- REMOVE ALL CONDUCTORS OF DEMOLISHED CONDUIT BACK TO SOURCE. DOCUMENT WIRE SIZE, COUNT, AND TERMINATIONS BEFORE REMOVING EXISTING CONDUCTORS



File: W:\TPS\Projects\02 - CAPITAL IMPROVEMENT\Durham\PROJECTS\202 DM Odor Control Phase 3 Headworks\50 Design & Engineering\120 Deliverables\7202 - CAD 200-H200-ED-250.dwg TAB:7202-ED-250
 Plotted: 4/12/26 at 8:49am By: eglston

DRN: -	ORIG DATE: #####
DSN: -	DWG #: -
CHK: -	CAD FILE #: 200-ED-250.DWG
APPD: -	SCALE: NO SCALE

THIS BAR IS ONE INCH WHEN DRAWING IS FULL SCALE.

REV #	DATE	DRN	APPD	DESCRIPTION

Clean Water Services
 2550 SW Hillsboro Hwy. Hillsboro, Oregon 97123-9379

PROJ NAME:
**CLEAN WATER SERVICES
 DURHAM WRRF
 ODOR CNTROL PHASE 3
 HEADWORKS**

SHEET TITLE:
**ELECTRICAL DEMOLITION
 HEADWORKS
 LOWER FLOOR
 EAST PLAN**

SHEET: -	OF: -
PLOT DATE: 4/1/2026	
PLC #: -	
CWS PROJ#: 7202	

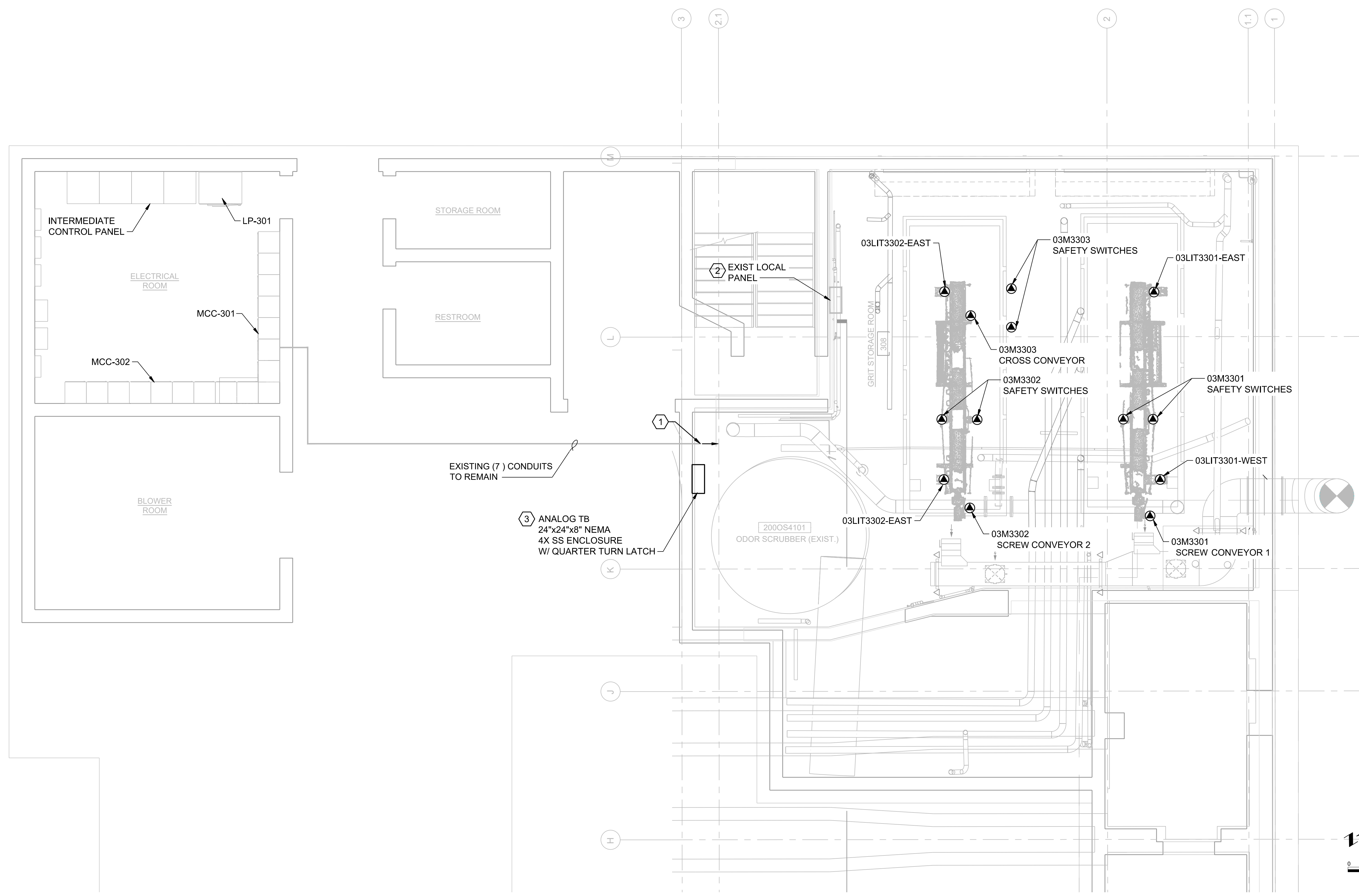
DWG #:
200-ED-250

GENERAL SHEET NOTES

- COORDINATE WORK WITH REQUIREMENTS LISTED IN SECTION 01140 WORK RESTRICTIONS AND SECTION 01324 CONSTRUCTION SEQUENCE.
- CONDITIONS SHOWN ON THE PLANS RELATIVE TO THE WORK BEING PERFORMED ARE BASED ON THE BEST INFORMATION AVAILABLE BUT ARE SUBJECT TO VERIFICATION. VERIFY LOCATION AND ELEVATIONS OF EQUIPMENT DUCTS, PIPING AND OTHER COMPONENTS TO BE CROSSED OR CONNECTED PRIOR TO BEGINNING NEW CONDUIT INSTALLATIONS. CORRECT DEFICIENCIES CAUSED BY FAILURE TO PERFORM SUCH VERIFICATIONS AT NO COST TO OWNER. IMMEDIATELY NOTIFY OWNER OF CONDITIONS IN CONFLICT WITH DETAILS AND OR PLANS.
- PROVIDE NEW SEAL OFF CONNECTIONS AT FIELD DEVICES, LOCAL CONTROL PANEL, AND BEFORE CONDUITS PASSES THROUGH THE WALL FROM THE HEADWORKS DUMPSTER ROOM TO LOWER LEVEL.
- PROVIDE NEW EXPLOSION PROOF RATED FLEX CONDUIT AND AT FIELD DEVICES.
- NEW CONDUIT NOT SHOWN FOR CLARITY. CONTRACTOR TO ROUTE TO FIELD EQUIPMENT AND DEVICES. REFER TO DWG900-E-660.

SHEET KEYNOTES

- CONNECT NEW CONDUIT TO EXISTING AND FIELD ROUTE TO EQUIPMENT AND DEVICES. PROVIDE NEW CONDUIT COUPLINGS.
- COIL SPARE #14's NEATLY IN LOCAL CONTROL PANEL.
- COIL SPARE TSP NEATLY IN PULL BOX.



File: W:\TPS\Projects\02 - CAPITAL IMPROVEMENT\Durham\PROJECTS\202 DM Odor Control Phase 3 Headworks\50 Design & Engineering\120 Deliverables\202 - CAD\200-H\200-E-250.dwg TAB:7202-E-250
 Plotted: 4/12/26 at 8:54am By: eggleson

DRN: -	ORIG DATE: #####
DSN: -	DWG #: -
CHK: -	CAD FILE #: 200-E-250.DWG
APPD: -	SCALE: NO SCALE

THIS BAR IS ONE INCH WHEN DRAWING IS FULL SCALE.

REV #	DATE	DRN	APPD	DESCRIPTION


 2550 SW Hillsboro Hwy. Hillsboro, Oregon 97123-9379

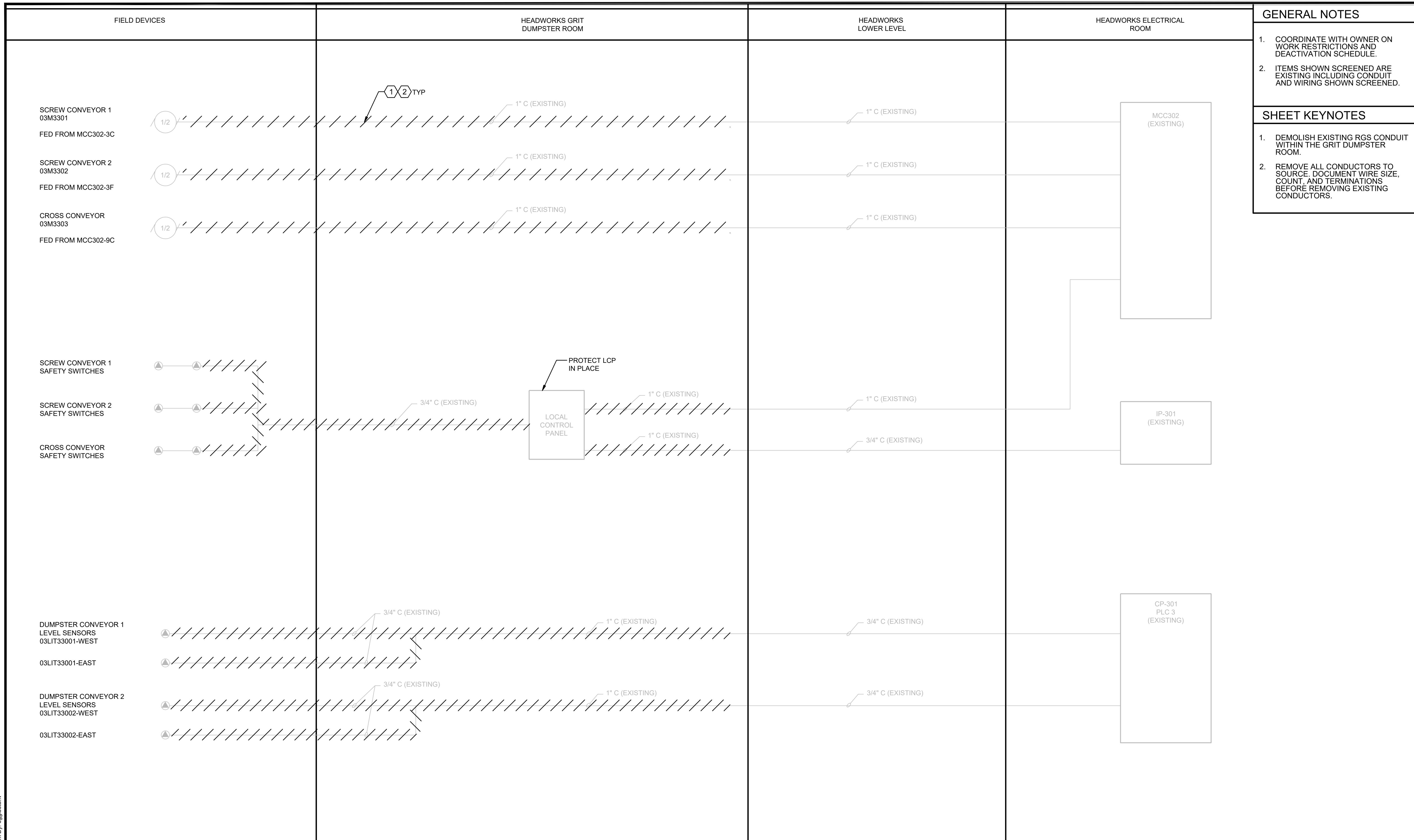
PROJ NAME:
**CLEAN WATER SERVICES
 DURHAM WRRF
 ODOR CNTL PHASE 3
 HEADWORKS**

SHEET TITLE:
**ELECTRICAL
 HEADWORKS
 LOWER FLOOR
 EAST PLAN**


SHEET: -	OF: -
PLOT DATE: 4/1/2026	
PLC #: -	
CWS PROJ #: 7202	

DWG #:
200-E-250

File: W:\TPS\Projects\02 - CAPITAL IMPROVEMENT\Durham\PROJECTS\2022 DM Odor Control Phase 3 Headworks\50 Design & Engineering\120 Deliverables\7202 - 900-ED-660.dwg TAB:900-ED-660
 Plotted: 3/31/26 at 10:37am By: egleston



DRN: -	ORIG DATE: 02/06/2026
DSN: -	DWG #: -
CHK: -	CAD FILE #: 7202 - 900-ED-660.DWG
APPD: -	SCALE: NO SCALE



 THIS BAR IS ONE INCH WHEN DRAWING IS FULL SCALE.

REV #	DATE	DRN	APPD	DESCRIPTION
0	-	-	-	-



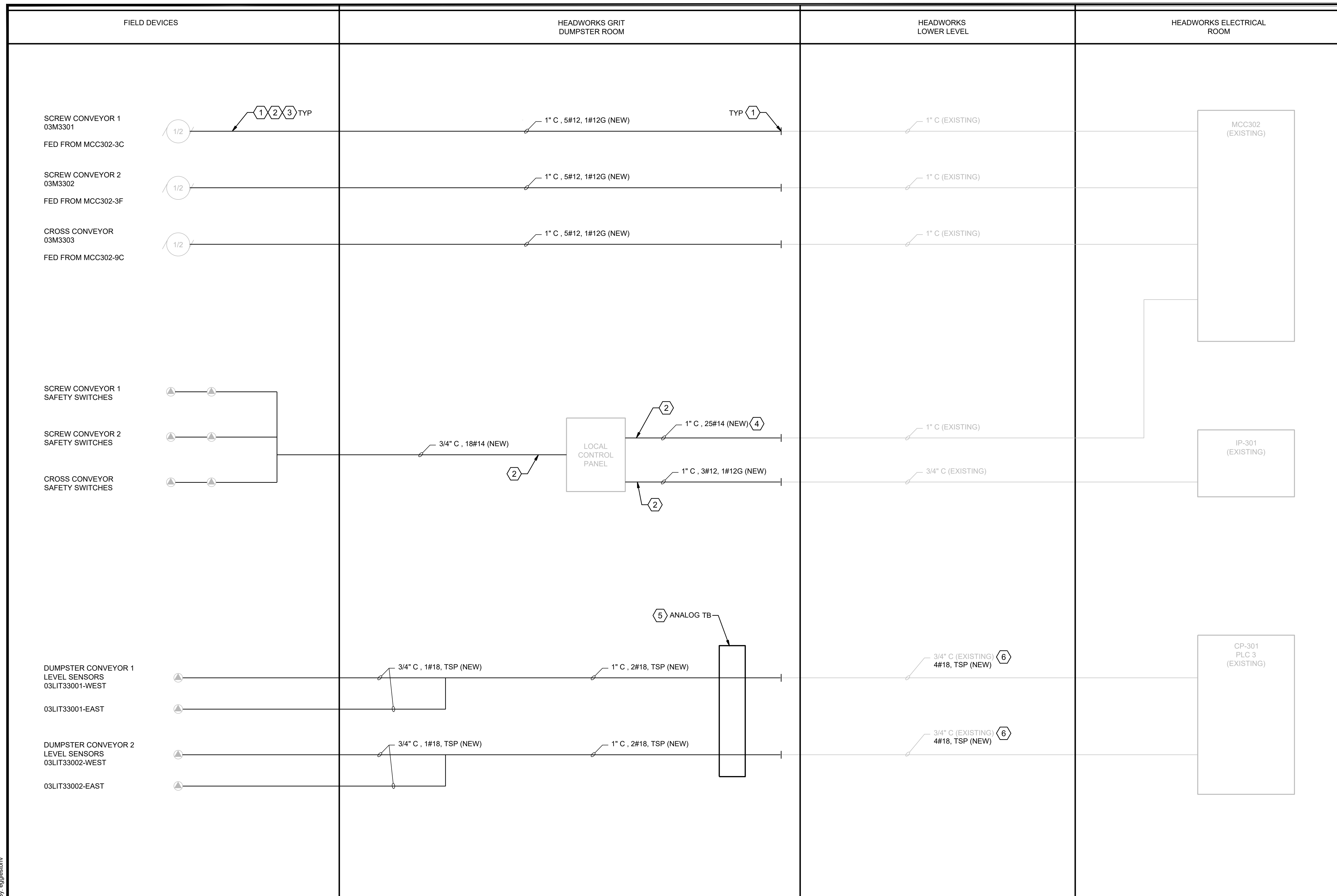
2550 SW Hillsboro Hwy. Hillsboro, Oregon 97123-9379

PROJ NAME: CLEAN WATER SERVICES DURHAM WRRF ODOR CONTROL PHASE 3 HEADWORKS

SHEET TITLE: ELECTRICAL CABLE BLOCK DIAGRAM GRIT DUMSTER ROOM

SHEET: OF:	
PLOT DATE:	3/31/2026
PLC #:	
CWS PROJ #:	7202

DWG #: 900-ED-660



- GENERAL NOTES**
- COORDINATE WITH OWNER ON WORK RESTRICTIONS AND DEACTIVATION SCHEDULE.
 - ITEMS SHOWN SCREENED ARE EXISTING INCLUDING CONDUIT AND WIRING SHOWN SCREENED
 - REMOVE AND REPLACE ALL CONDUCTORS TO SOURCE. DOCUMENT TERMINATIONS BEFORE REMOVING EXISTING CONDUCTORS
 - DEMOLISH EXISTING RGS CONDUIT WITHIN THE DUMPSTER ROOM AND REPLACE WITH NEW PVC COATED RGS.

- SHEET KEYNOTES**
- CONNECT NEW CONDUIT TO EXISTING.
 - PROVIDE NEW SEAL OFF CONNECTIONS AT FIELD DEVICES, LOCAL CONTROL PANEL, AND BEFORE CONDUIT PASSES THROUGH THE WALL FROM THE HEADWORKS DUMPSTER ROOM TO LOWER LEVEL.
 - PROVIDE NEW EXPLOSION PROOF RATED FLEX CONDUIT AT FIELD DEVICES.
 - COIL SPARE #14s IN LOCAL CONTROL PANEL. SPARE CONDUCTORS SHALL BE LONG ENOUGH TO REACH THE SAFETY SWITCHES ON SCREW CONVEYOR 1.
 - 24"x24"x8" NEMA 4x 316 SS BOX INSTALL OWNER FURNISHED TERMINAL STRIP.
 - COIL SPARE CONDUCTORS NEATLY IN PB. SPARE CONDUCTORS SHALL BE LONG ENOUGH TO REACH THE LEVEL SENSORS ON SCREW CONVEYOR 1.

File: W:\TPS\Projects\02 - CAPITAL IMPROVEMENT\DURHAM PROJECTS\7202 DM Odor Control Phase 3 Headworks\50 Design & Engineering\120 Deliverables\7202 - 900-E-660.dwg TAB:900-E-660
 Plotted: 4/12/26 at 9:00am By: eglston

DRN: -	ORIG DATE: 02/06/2026
DSN: -	DWG #: -
CHK: -	CAD FILE #: 7202 - 900-E-660.DWG
APPD: -	SCALE: NO SCALE

THIS BAR IS ONE INCH WHEN DRAWING IS FULL SCALE.

REV #	DATE	DRN	APPD	DESCRIPTION
0	-	-	-	-



PROJ NAME: CLEAN WATER SERVICES
 DURHAM WRRF
 ODOR CONTROL PHASE 3
 HEADWORKS

SHEET TITLE: ELECTRICAL
 CABLE BLOCK DIAGRAM
 GRIT DUMSTER ROOM

SHEET: -	OF: -
PLOT DATE: 4/1/2026	
PLC #:	
CWS PROJ #: 7202	

DWG #: 900-E-660

EXHIBIT B

CLEAN WATER SERVICES

DURHAM ODOR CONTROL PHASE 3
HEADWORKS PROJECT NO. 7202

SECTION 01330 SUBMITTAL PROCEDURES

PART 1 GENERAL

1.01 SUMMARY

- A. Wherever submittals are required in the Contract Documents, submit them to the Engineer.
- B. All submittals shall be submitted electronically.
- C. Electronic copies shall be in Microsoft Word, Excel, or Adobe PDF format unless otherwise specified. Electronic copies shall be submitted through a Web-based Construction Management System in accordance with Section 01320, Web-based Construction Management. The Owner will provide access rights for the collaboration website to Contractor personnel as necessary. The Contractor will be required to utilize the collaboration website, including providing and utilizing necessary computers, internet services, phone services, and other office, scheduling, and communication software programs.
- D. Definitions:
 - 1. **Action Submittal:** Written and graphic information submitted by the Contractor that requires the Engineer's approval. (In general, all submittals are to be considered Action Submittals unless specifically indicated as informational or deferred submittals in the Contract Documents.)
 - 2. **Informational Submittals:** Information submitted by the Contractor that does not require the Engineer's approval.
 - 3. **Deferred Submittal:** Information required for the review of Contractor-designed systems that will be submitted to the local authority having jurisdiction for permitting.
 - 4. **Schedule of Submittals:** As defined in the General Conditions, Article 1.

1.02 PRECONSTRUCTION CONFERENCE SUBMITTALS

- A. At the preconstruction conference of Section 01110, Summary of Work, the Contractor shall submit the following items to the Engineer for review:
 - 1. A preliminary submittal cover sheet.
 - 2. A preliminary Schedule of Submittals that includes a list of Shop Drawings, Samples, and proposed Substitutes.
 - 3. A preliminary schedule for submission of priority and major Shop Drawings (particularly for long-lead time equipment) and Samples.

4. A list of permits and licenses the Contractor shall obtain, indicating the agency required to grant the permit, the expected date of submittal for the permit, and required date for receipt of the permit.
5. A preliminary Schedule of Values in accordance with Section 01292, Schedule of Values.
6. A 60 -Day Plan of Operation in accordance with Section 01324, Construction Schedule.
7. A Project Overview Gantt Chart in accordance with Section 01324, Construction Schedule.
8. Contractor's Project Specific Safety Plan and Hazard Assessment Worksheet in accordance with Section 01329, Safety.

1.03 SCHEDULE OF SUBMITTALS

- A. The Contractor shall prepare and submit a comprehensive Schedule of Submittals in accordance with the requirements of the General Conditions and this Section. The Schedule of Submittals shall list all required submittals, including Shop Drawings, Product Data, Samples, mock-ups, certifications, test reports, and other items specified throughout the Contract Documents. The Schedule of Submittals shall identify each submittal by specification section and paragraph number, the required submission date, the required approval date, and any dependencies affecting the Progress Schedule, such as submittals with long equipment lead times or those that affect the Project's critical path. The Schedule of Submittals shall be submitted in Microsoft Excel and PDF format.
- B. No submittal submissions or reviews may proceed until the Schedule of Submittals has been accepted by the Engineer. The Contractor shall submit submittals in the order defined in the accepted Schedule of Submittals.

1.04 SHOP DRAWINGS

- A. Wherever called for in the Contract Documents or where required by the Engineer, the Contractor shall furnish to the Engineer for review.
- B. Shop Drawings in Adobe PDF format shall be bookmarked.
- C. Shop Drawings may include detail design calculations, Shop-prepared Drawings, fabrication and installation drawings, erection drawings, lists, graphs, catalog sheets, data sheets, and similar items. If a list, graph, catalog sheet, data sheet, etc., includes more than one item, clearly mark which item is the subject of the submittal and the actual product to be furnished.
- D. Shop Drawings that require Contractor to submit design calculations as part of a submittal, such calculations shall bear the signature and seal of an engineer registered in the appropriate branch and in the State of Oregon.

E. Shop Drawing Organization:

1. A single submittal cover sheet shall be used for each technical specification section, item, class of material, or equipment for which a submittal is required. The submittal cover sheet shall include, at a minimum, the following information:
 - a. Project name.
 - b. Owner project number .
 - c. Submittal date.
 - d. Submittal number.
 - e. Submittal type (action, informational, deferred).
 - f. Specification section number and title .
 - g. Drawing number, detail number, schedule title, room number, or facility name, as applicable.
 - h. Product name and description.
 - i. Vendor or manufacturer name.
 - j. Vendor or manufacturer address and contact information.
 - k. Vendor purchase order number or job number.
 - l. Subcontractor name and contact information.
2. A single submittal covering multiple sections will not be acceptable, unless the primary specification references other sections for components. Example: if a pump section references other sections for the motor, shop-applied protective coating, anchor bolts, local control panel, and variable frequency drive, a single submittal would be acceptable. A single submittal covering vertical turbine pumps and horizontal split case pumps would not be acceptable.
3. Unless indicated otherwise, terminology and equipment names and numbers used in submittals shall match those used in the Contract Documents.
4. Unless otherwise approved by the Engineer, the Contractor shall include with each submittal a complete copy of the specification section, with addendum updates included, immediately following the submittal cover sheet. Each paragraph of the specification shall be clearly marked to indicate full compliance with the specified requirements, identify any variations or exceptions to the specified requirements, or submission of information as a separate submittal. For every exception noted, the Contractor shall provide a detailed written explanation describing the basis for the deviation and the proposed alternative or substitute in accordance with the General Conditions, Article 7.05. Failure to submit a marked-up copy of the specification section, along with written justification for all exceptions, shall constitute sufficient cause for rejection of the entire submittal without review.

F. Format:

1. Minimum sheet size shall be 8.5 inches by 11 inches. Maximum sheet size shall be 22 inches by 34 inches. Every page in a submittal shall be numbered in sequence. Each copy of a submittal shall be collated and stapled or bound, as appropriate. The Engineer will not collate sheets or copies.
2. Where product data from a manufacturer is submitted, clearly mark which model is proposed, with complete pertinent data capacities, dimensions, clearances, diagrams, controls, connections, anchorage, and supports. Sufficient level of detail shall be presented for assessment of compliance with the Contract Documents.

G. Submittal Numbering:

1. Each submittal shall be assigned a unique number based on the most relevant specification section number. Submittals shall be numbered sequentially, and the submittal numbers shall be clearly noted on the cover sheet. Original submittals shall be assigned a numeric submittal number (e.g., 15200-1.0). If submittal "15200-1.0" requires a resubmittal, the first resubmittal will bear the designation "15200-1.1" and the second resubmittal will bear the designation "15200-1.2" and so on.
2. If there is a follow-up submittal related to a previously submitted class of material or type of equipment (e.g., follow-up submittal to submittal "15200-1.0"), it shall be assigned the next sequential number "15200-2.0". If submittal "15200-2.0" requires a resubmittal, the first resubmittal will bear the designation "15200-2.1" and the second resubmittal will bear the designation "15200-2.2" and so on.

H. Submittal File Naming Convention:

1. Each submittal file uploaded to the Web-based Construction Management System shall be named using the unique submittal number assigned, including a description of what is included in the submittal, such as the submitted class of material or type of equipment (e.g., 15200-1.0 - Carbon Steel Pipe and Fittings). If submittal "15200-1.0" requires a resubmittal, the first resubmittal file will be named "15200-1.1 – Carbon Steel Pipe and Fittings", and the second resubmittal file will be named "15200-1.2 – Carbon Steel Pipe and Fittings" and so on.
2. If there is a follow-up submittal related to a previously submitted class of material or type of equipment in the same specification section (e.g., follow-up submittal to submittal "15200-1.0"), it shall be assigned the next sequential number, including a description of what is included in the submittal, such as the submitted class of material or type of equipment (e.g., 15200-2.0 – Ductile Iron Pipe and Fittings). If

submittal "15200-2.0" requires a resubmittal, the first resubmittal file will be named "15200-2.1 – Ductile Iron Pipe and Fittings", and the second resubmittal file will be named "15200-2.2 – Ductile Iron Pipe and Fittings" and so on.

- I. Shop Drawings that are unorganized, do not have a table of contents, do not clearly indicate what is submitted, and do not meet the requirements of the Contract Documents will be returned without review.
- J. Except as may otherwise be indicated in sections, the Engineer will return submittal to the Contractor with comments noted thereon, within 21 days following receipt by the Engineer.
- K. It is considered reasonable that the Contractor will make a complete and acceptable submittal to the Engineer by the third resubmittal on an item. Per General Conditions 7.16 E Resubmittal Procedures, additional costs for the Engineer's review shall be the Contractors responsibility.
- L. If a submittal is returned to the Contractor marked "NO EXCEPTIONS TAKEN," formal revision and resubmission will not be required.
- M. If a submittal is returned marked "MAKE CORRECTIONS NOTED," Contractor shall make the corrections on the submittal, but formal revision and resubmission will not be required, but written acknowledgement that the corrections were made will be required and the final O&M manual will include both the written acknowledgment of the correction and the correction.
- N. If a submittal is returned marked "AMEND-RESUBMIT," the Contractor shall revise it and shall resubmit the required number of copies to the Engineer for review. Resubmittal of portions of multi-page or multi-drawing submittals will not be allowed. For example, if a Shop Drawing submittal consisting of 10 drawings contains one drawing noted as "AMEND RESUBMIT," the submittal as a whole is deemed "AMEND RESUBMIT," and 10 drawings are required to be resubmitted.
- O. If a submittal is returned marked "REJECTED-RESUBMIT," it shall mean either that the proposed material or product does not satisfy the specification, the submittal is so incomplete that it cannot be reviewed, or is a substitution request not submitted in accordance with the Contract Documents.
- P. Resubmittal of rejected portions of a previous submittal will not be allowed. Every change from a submittal to a resubmittal or from a resubmittal to a subsequent resubmittal shall be identified and flagged on the resubmittal.
- Q. If a submittal is returned to the Contractor marked "RECORD COPY," it shall mean that the document has been received and filed for archival purposes. No formal revision or resubmission is required.

- R. Fabrication of an item may commence only after the Engineer has reviewed the pertinent submittals and returned copies to the Contractor marked either “NO EXCEPTIONS TAKEN” or “MAKE CORRECTIONS NOTED”. Corrections indicated on submittals shall be considered as changes necessary to meet the requirements of the Contract Documents and shall not be taken as changes to the Contract requirements.
- S. Submittals shall be carefully reviewed by an authorized representative of the Contractor prior to submission to the Engineer. Each submittal shall be dated and signed by the Contractor as being correct and in strict conformance with the Contract Documents. In the case of Shop Drawings, each sheet shall be so dated and signed. Any deviations from the Contract Documents shall be noted by the Contractor on the submittal cover sheet or within the marked up specification section. Such deviations shall be allowed if approved in writing by the Engineer and Owner. The Engineer will only review submittals that have been so verified by the Contractor. Nonverified submittals will be returned to the Contractor without action taken by the Engineer, and any delays caused thereby shall be the total responsibility of the Contractor.
- T. Corrections or comments made on the Contractor’s Shop Drawings during review do not relieve the Contractor from compliance with Contract Documents. Review is for conformance to the design concept and general compliance with the Contract Documents only. The Contractor is responsible for confirming and correlating quantities and dimensions, fabrication processes and techniques, coordinating Work with the trades, and satisfactory and safe performance of the Work.

1.05 SAMPLES

- A. The Contractor shall submit the number of samples indicated by the Specification Section. If the number is not indicated, submit not less than three samples. Where the amount of each sample is not indicated, submit such amount as necessary for proper examination and testing by the methods indicated.
- B. Samples shall be individually and indelibly labeled or tagged, indicating the salient physical characteristics and manufacturer’s name. Upon acceptance by the Engineer, one set of the samples will be stamped and dated by the Engineer and returned to the Contractor, one set of samples will be retained by the Engineer, and one set shall remain at the Site in the Engineer’s field office until completion of the Work.
- C. Unless indicated otherwise in Specification Section, the Engineer will select colors and textures from the manufacturer’s standard colors and standard materials, products, or equipment lines. If certain samples represent nonstandard colors, materials, products, or equipment lines that will require an

increase in Contract Times or Price, the Contractor shall clearly state so on the cover sheet of the submittal.

- D. The Contractor shall schedule sample submittals such that:
1. Sample submittals for color and texture selection are complete so the Engineer has 45 days to assemble color panels and select color and texture dependent products and materials without delay to the construction schedule.
 2. After the Engineer selects colors and textures, the Contractor has sufficient time to provide the products or materials without delay to the construction schedule. The Contract Times will not be extended for the Contractor's failure to allow enough review and approval or selection time, failure to submit complete samples requiring color or texture selection, or failure to submit complete or approvable samples.

1.06 TECHNICAL OPERATION AND MAINTENANCE INFORMATION

- A. The Contractor shall submit technical operation and maintenance (O&M) information for each item of mechanical, electrical, and instrumentation equipment in an organized manner as specified in Section 01782, Operation and Maintenance Data, and in the Specifications Sections of the Contract Documents. O&M information, instructions and data shall be provided for each maintainable material and piece of equipment. It shall be written so that it can be used and understood by the Owner's operation and maintenance staff.
- B. O&M Submittal Schedule: Except where indicated otherwise, technical O&M information shall be submitted in initial draft form to the Engineer not later than 90 days prior to any startup, system testing or operator training.
1. Subsequent drafts shall be provided by the Contractor within 30 days from the date of Contractor's receipt of review comments from the Engineer.
 2. The approved Operation and Maintenance Manual must be available prior to any startup, system testing, or operator training.
 3. The Contractor's attention is drawn to Section 01770, Closeout Procedures, where the submission of the Operation and Maintenance Manual is related to payments.

1.07 RECORD DOCUMENTS

- A. The Contractor shall maintain one set of Drawings at the Site for the preparation of record drawings. On these, it shall mark every project condition, location, configuration, and any other change or deviation which may differ from the Contract Drawings

- B. Buried or concealed construction and utility features shall be surveyed and located with coordinates recording the horizontal and vertical location of buried utilities regardless if they differ from the locations indicated, or that were not indicated on the Contract Drawings. Surveyed data shall be submitted to the Engineer on a monthly basis.
- C. Record drawings shall be supplemented by:
1. Any detailed sketches and pictures as necessary to fully indicate the Work as actually constructed.
 2. Building Information Modeling (BIM)
 3. Data files generated by the Contractor and incorporated into the Work:
 - a. Point clouds (.rcs).
 - b. AutoCAD (.dwg) files where no modeling occurs.
 - c. Coordination models.
 - d. Coordination drawings.
- D. These record drawings are the Contractor's representation of as-built conditions, and shall be maintained up-to-date during the progress of the Work.
- E. Using erasable colored pencils (not ink or indelible pencil), indicate in green when showing information deleted from the Drawings, red when showing information added to the Drawings, and blue and circled in blue to show notes.
- F. Notes shall identify relevant Change Orders by number and date. Preparation of record drawings shall conform to the following:
1. Date entries.
 2. Call attention to entry by "cloud" drawn around area or areas affected.
 3. Legibly mark to record actual changes made during construction, including, but not limited to:
 - a. Depths of various elements of foundation in relation to finished first floor data if not shown or where depth differs from that shown.
 - b. Horizontal and vertical locations of existing new underground facilities and appurtenances, and other underground structures, equipment, or Work. Reference to at least two measurements to permanent surface improvements.
 - c. Location of internal utilities and appurtenances concealed in the construction referenced to visible and accessible features of the structure.
 - d. Locate existing facilities, piping, equipment, and items critical to the interface between physical conditions or construction and new construction.

- e. Changes made by Addenda and Field Orders, Work Change Directives, Change Orders, Written Amendments, and Engineer's written interpretations and clarifications using consistent symbols for each and showing appropriate document tracking number.
4. Dimensions of Schematic Layouts: Show record drawings, by dimension, the centerline of each run of items such as are described in previous subparagraph above.
 - a. Clearly identify the item by accurate notation such as "cast iron drain," "galv. water," and the like.
 - b. Show, by symbol or note, vertical location of item ("under slab," "in ceiling plenum," "exposed," and the like.
 - c. Make identification so descriptive that it may be related reliably to Specifications.
- G. The Contractor shall maintain one set of Specifications at the Site for the preparation of record specifications. On these shall be recorded every change or deviation during the course of the project resulting from Work Change Directives, Field Orders, Substitutions, Engineer's written interpretation, and other reason. Record specifications shall be marked with green, red and blue pencils in the same manner as record drawings, noting the document or other reason that caused the change.
- H. Prior to submitting each Application for Payment, request Engineer's review and approval of current status of record documents. Failure to properly maintain, update, and submit record documents may result in a deferral by Engineer to recommend whole or any part of Contractor's Application for Payment, either partial or final.
- I. In the case of those Drawings that depict the detail requirement for equipment to be assembled and wired in the factory, such as motor control centers and the like, the record drawings shall be updated by indicating those portions which are superseded by Change Order Drawings or final Shop Drawings, and by including appropriate reference information describing the change orders by number and the Shop Drawings by manufacturer, Drawing, and revision numbers.
- J. Disorganized or incomplete record documents will not be accepted. The Contractor shall revise them and resubmit within 10 days.
- K. Current as-built markups of record documents shall be accessible to the Engineer during the construction period and shall be provided to the Owner prior to requesting final payment. Current markups of electrical and instrumentation drawings shall be accessible to Owner during startup and until final record drawings are available.

- L. The request for final payment will not be accepted until the record documents have been completed and delivered to the Engineer.
- M. Information submitted by the Contractor will be assumed to be correct, and the Contractor shall be responsible for the accuracy of such information.

1.08 QUALITY CONTROL (QC) SUBMITTALS

- A. Quality control submittals are defined as those required by the Specifications to present documentary evidence to the Engineer that the Contractor has satisfied requirements of the Contract Documents.
- B. Unless otherwise indicated, QC submittals shall be submitted:
 - 1. Before delivery and unloading, for the following types of submittals:
 - a. Manufacturers' installation instructions.
 - b. Manufacturers' and Installers' experience qualifications.
 - c. Ready mix concrete delivery tickets.
 - d. Design calculations.
 - e. Affidavits and manufacturers' certification of compliance with indicated product requirements.
 - f. Laboratory analysis results.
 - g. Factory test reports.
 - 2. For the following types of submittals, the manufacturer's field representative shall submit a draft certification prior to leaving the Project site and a final certification within 7 days of the event documented:
 - a. Manufacturers' field representative certification of proper installation.
 - 3. Within 30 days of the event documented for the following types of submittals:
 - a. Field measurement.
 - b. Field test reports.
 - c. Receipt of permit.
 - d. Receipt of regulatory approval.
 - 4. Submittal and testing requirements as specified in Section 17050, Basic Measurement and Control Instrumentation Materials and Methods.
- C. The Engineer will record the date that a QC submittal was received and review it for compliance with submittal requirements, but the review procedures above for Shop Drawings and samples will not apply.

1.09 INFORMATIONAL SUBMITTALS

- A. Informational submittals formalize the flow of information between the Contractor and the Engineer.

PART 2 PRODUCTS (NOT USED)

PART 3 EXECUTION (NOT USED)

END OF SECTION

EXHIBIT C



DURHAM WRRF ODOR CONTROL PHASE 3 HEADWORKS PROJECT NO. 7202

PRE-BID CONFERENCE SIGN IN SHEET

March 17, 2026 at 10:00 a.m.

Durham WRRF Operations and Maintenance Mallard Conference Center

Durham Water Resource Recovery Facility

16580 SW 85th Ave, Tigard, OR 97224

CONTRACTOR NAME	FIRST & LAST NAME	PHONE	EMAIL
ORR INC	Mark Orr	503-743-1000	bids@orrinc.us
Dewitt Const.	Vern Gardner	503-933-6496	vernkeylove@gmail.com
Ward-Henshaw	Mike Durham	503-710-7793	miked@Ward-Henshaw.com
Jimmy Cascade Electrical	Jimmy Lindberg	1-360-608-1103	jimmy@cascadeelec.com
R.L. Reimers Company	Ross Meyer	971-304-5661	ross@rlreimers.com
S&S ELECTRICAL	JOEL HOUSE	503 569 4184	JHOUSE@SSELECTRICAL.NET
NCE	DUSTIN FERGUSON	360-957-3701	DUSTIN@NCE.US
Stellar J	Don Donovan	360 225 7996	bids@stellarj.com



DURHAM WRRF ODOR CONTROL PHASE 3 HEADWORKS PROJECT NO. 7202

PRE-BID CONFERENCE SIGN IN SHEET

March 17, 2026 at 10:00 a.m.

Durham WRRF Operations and Maintenance Mallard Conference Center

Durham Water Resource Recovery Facility

16580 SW 85th Ave, Tigard, OR 97224

CONTRACTOR NAME	FIRST & LAST NAME	PHONE	EMAIL
MJ Hughes Construction	Spencer Hughes	360-314-2024	Bids@mjhughes.com
JW Fowler	SHANE MOODY	971-762-3539	estimating@JwFowler.com
Emery Sons	Lane Wamen	503-588-7576	Bids@emeryandsons.com
JKH Contractors	Mario Lipari	503 489 2020	Bids@jkhcontractors.com

Durham WRRF Odor Control Phase 3 Headworks Pre-bid Conference

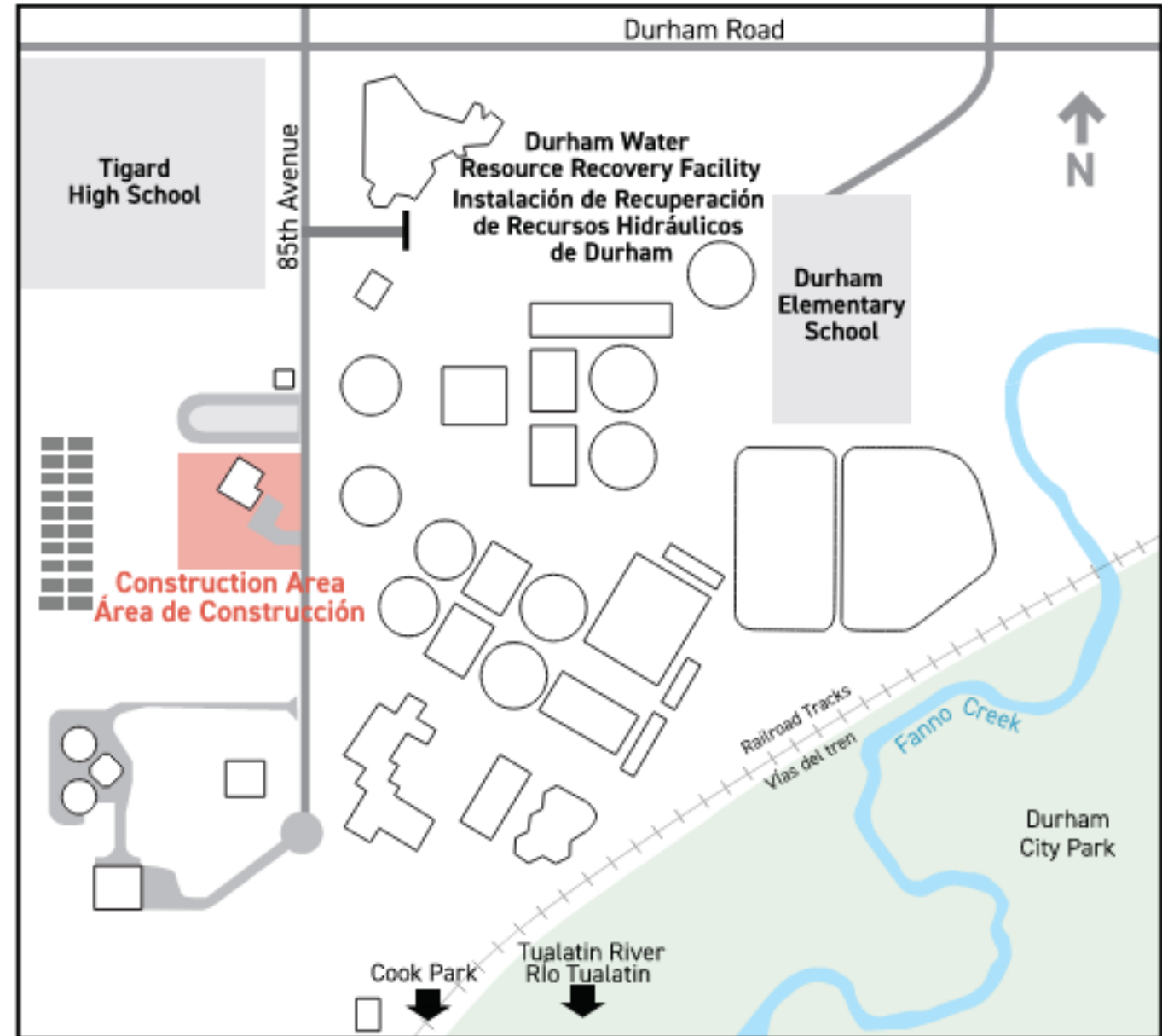
*Vasily Chernishov, Mike Idehara Clean Water Services
Ken Galardi, Craig Massie Jacobs Engineering Group*

March 17, 2026



Agenda

- *Introductions and Sign-In*
- *Project schedule*
- *Features of this Contract*
- *Project Overview*
- *Construction Constraints*
- *Concurrent work on the site*
- *Startup and Testing*
- *Record Drawings*
- *Site Tour*



Introductions and Sign In

- *Introductions and Sign-In*
 - *Owner – Clean Water Services*
 - *Engineer - Jacobs Engineering Group*

Project Schedule

- *Project schedule*
 - *Last day for questions to be answered: April 2, 2026 at 2:00 pm*
 - ❖ *Bidder questions to Stephen Waldron, CWS: 503.547.8134, Waldrons@cleanwaterservices.org*
 - *Bid closing, and publicly read aloud: 2:00 pm on April 9, 2026, telephone conference number 503-681-4499*
 - *Estimated Notice of Award: April 17, 2026*
 - *Estimated Notice to Proceed: June 9, 2026*
 - *Substantial Completion: 493 Calendar days from NTP*
 - ❖ *Interim Milestone – Odor Control Fans: The odor control fan submittal must be received within 28 calendar days after the Notice to Proceed.*
 - *Final Completion: 556 calendar days from NTP*

Features of this Contract

- Bid documents available at <https://bidlocker.us/details/4476>, tabulation to be posted following closing
- Volume 1: Specifications – Contract conditions and technical specifications
- Volume 2: Technical Specifications
- Volume 3: Drawings
- Volume 4: Standard Details
- Davis Bacon/BOLI Wage Rates
- Base bid includes:
 - Lump Sum
 - Major Equipment Options Schedule

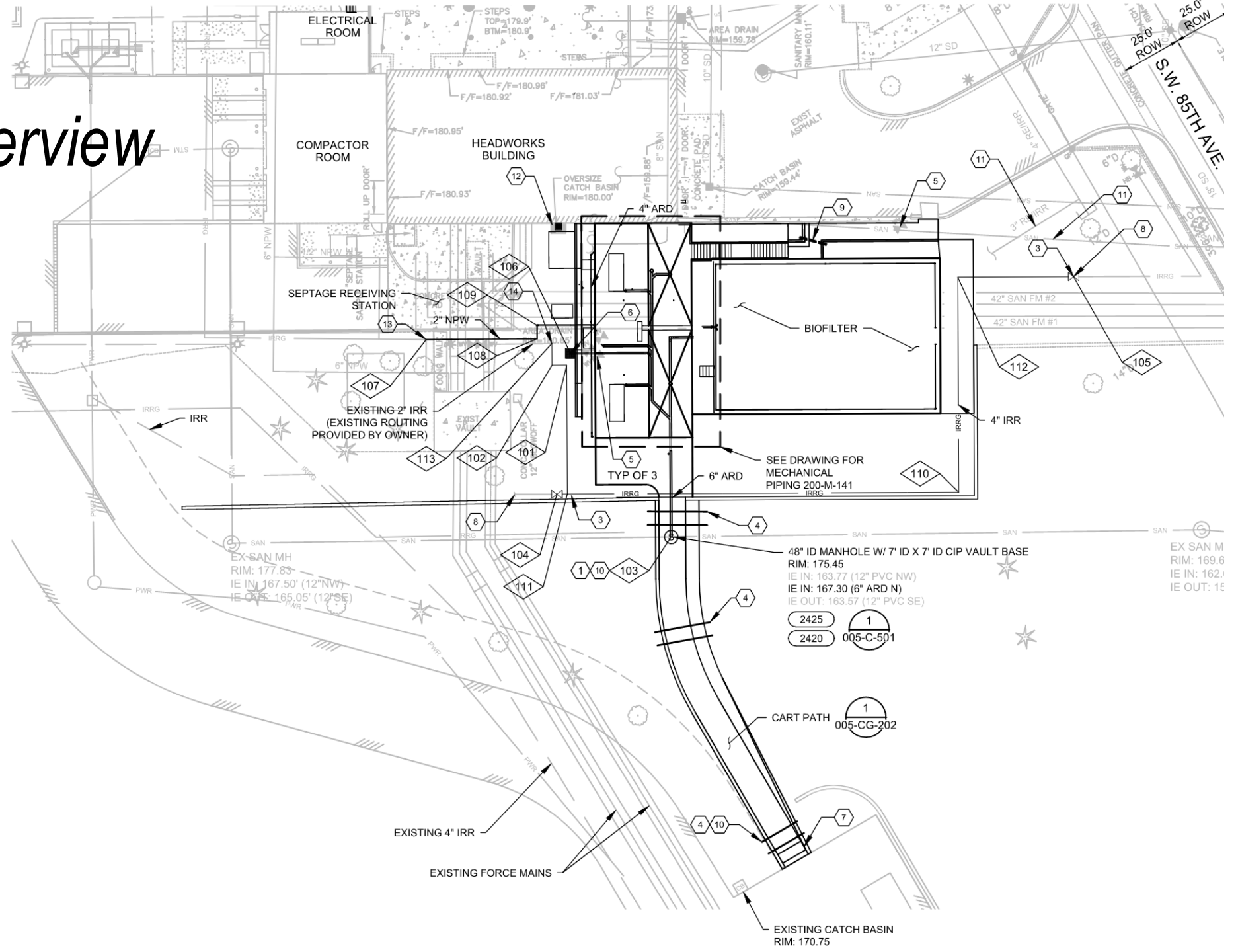
Project Overview

- *Construct and commission a new engineered media biofilter (biofilter). The biofilter will be a single cell, reinforced concrete basin with integral air distribution, internal high-density polyethylene liner, engineered media, media floor support system, water panel, and a humidification and irrigation system.*
- *Install and commission two new odor control fans located adjacent to the new biofilter.*
- *Modify, re-route, and provide new foul air ducting and supports within the Headworks facility to the new odor control fans and biofilter.*
- *Demolish the existing odor mist scrubber, including the existing odor exhaust fan, unused foul air duct, low-pressure air piping, and chemical piping.*
- *Install and commission two Owner-furnished variable speed drives in the upper electrical room.*
- *Fill abandoned force mains below the new biofilter with grout as shown on the Drawings.*

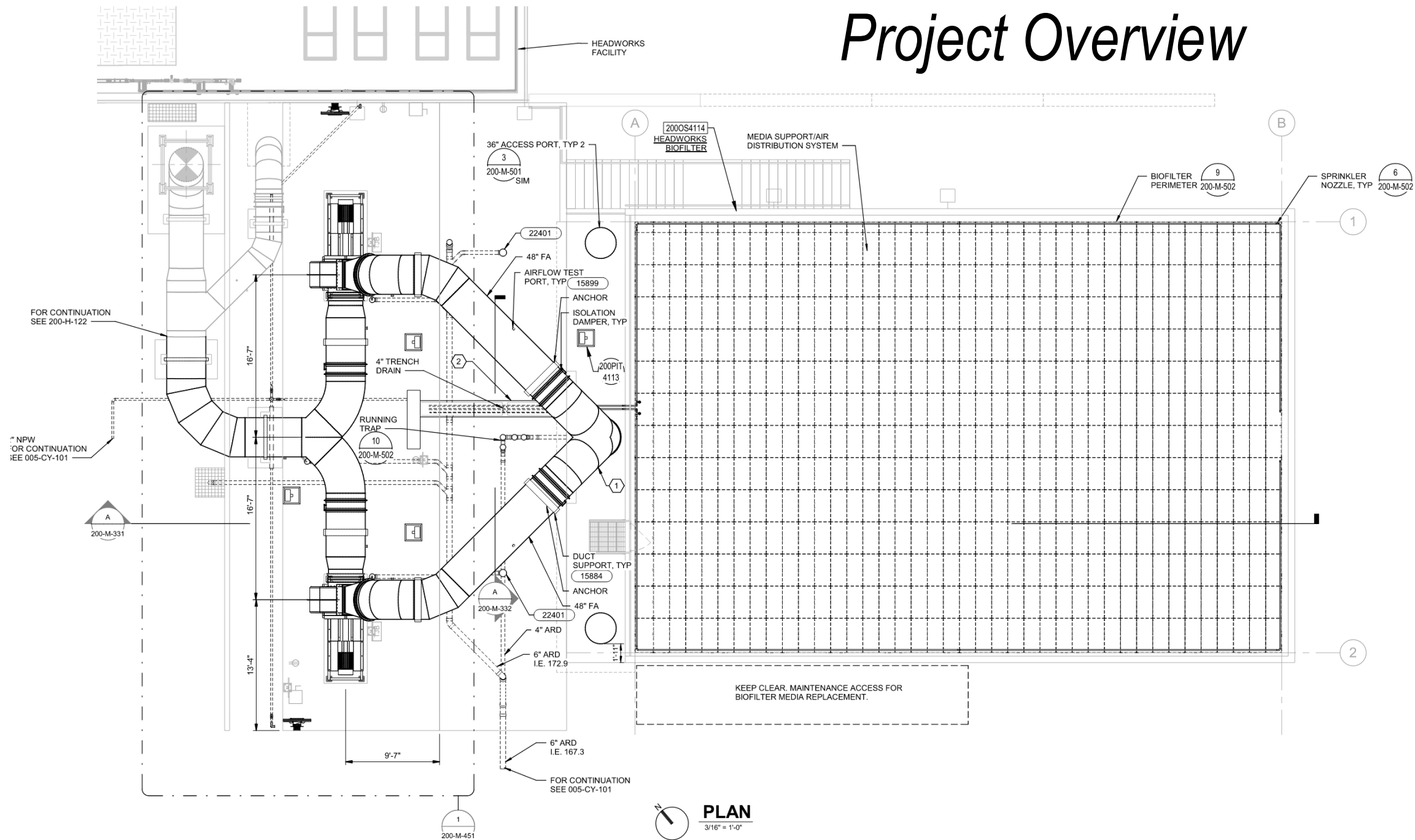
Project Overview (con't)

- Install instrumentation and control stations, associated conduits, conductors, and other appurtenances necessary to complete the Work.*
- Finish grading to incorporate the biofilter into the earthen bank south of Headworks, including a new concrete stairway alongside the north edge of the biofilter and a cart path extending south from the fan pad to the digester gas treatment skid.*
- Install site lighting to illuminate access around the biofilter, odor control fans, and cart path.*
- Install irrigation sleeves at hardscape crossings. Final landscaping and site irrigation will be by Owner.*
- Install new drainage piping and manhole for the biofilter drain, connecting to existing sanitary sewer line.*

Project Overview



Project Overview



HEADWORKS FACILITY

200OS4114 HEADWORKS BIOFILTER

MEDIA SUPPORT/AIR DISTRIBUTION SYSTEM

BIOFILTER PERIMETER 200-M-502

SPRINKLER NOZZLE, TYP 200-M-502

36" ACCESS PORT, TYP 2
200-M-501 SIM

48" FA

AIRFLOW TEST PORT, TYP 15899

ANCHOR ISOLATION DAMPER, TYP

200PIT 4113

4" TRENCH DRAIN

RUNNING TRAP 200-M-502

DUCT SUPPORT, TYP 15884

ANCHOR 48" FA

200-M-332

4" ARD

6" ARD I.E. 172.9

6" ARD I.E. 167.3

FOR CONTINUATION SEE 005-CY-101

FOR CONTINUATION SEE 200-H-122

1" NPW FOR CONTINUATION SEE 005-CY-101

200-M-331

200-M-451

PLAN
3/16" = 1'-0"

Construction Constraints

- *Section 01140 – Work Restrictions*
 - *Allowable windows for deactivation of process systems such as sanitary sewer/plant drain, odor control system shutdowns and tie-ins, electrical shutdowns*
 - *Work to be sequenced to avoid the need for temporary odor control*
- *Maintain operations and operator access*
 - *Access for screenings and grit haulers*
 - *Access for septage haulers*
 - *Access for FOG haulers*
 - *Access to existing Digester Complex 2*

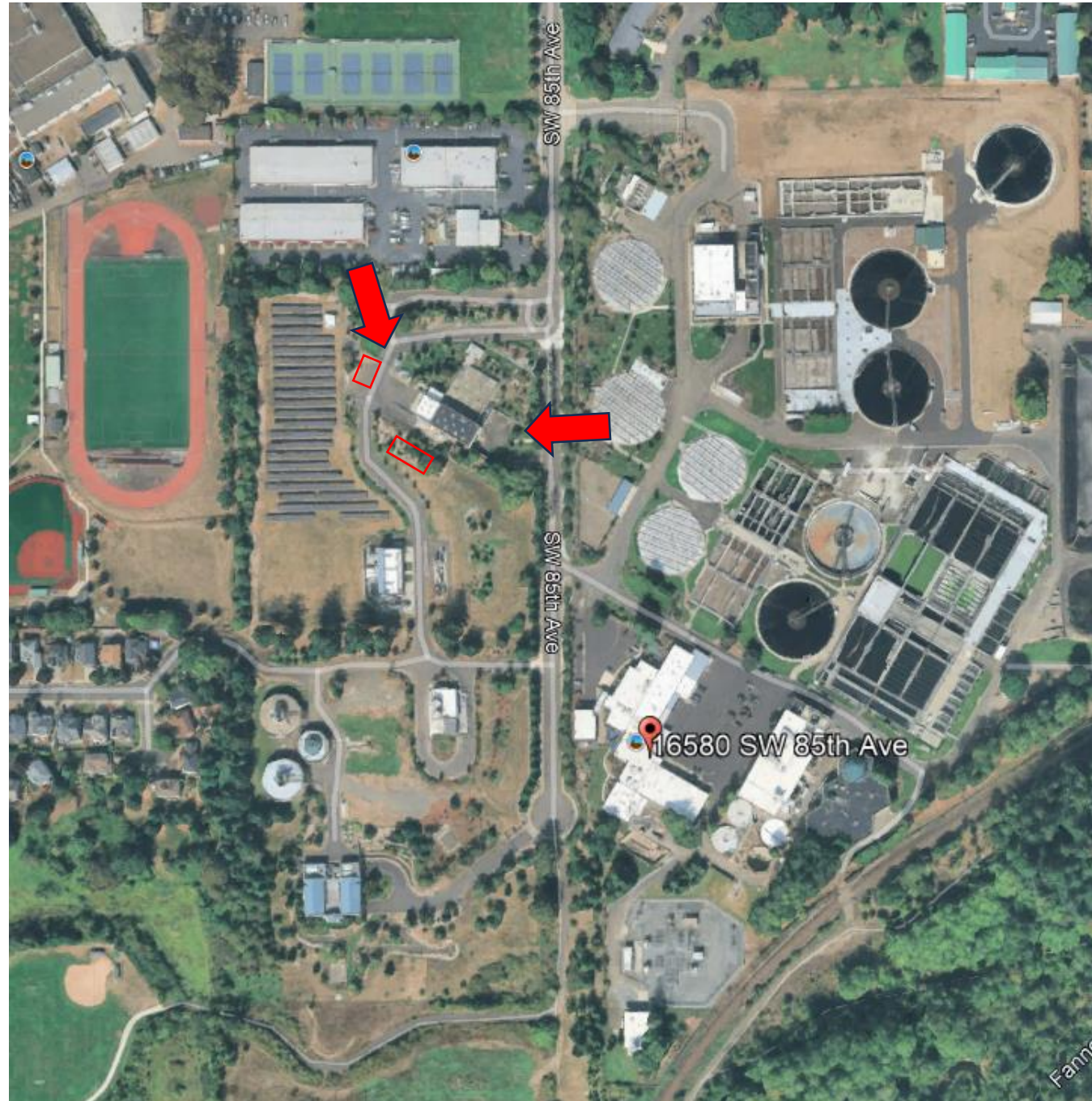
Safety

- *Section 01329 Safety Plan*
- *Contractor developed site specific safety plan*
- *Hazard Review Worksheet*
- *Clean Water Services Safety Orientation for Contractor Personnel*



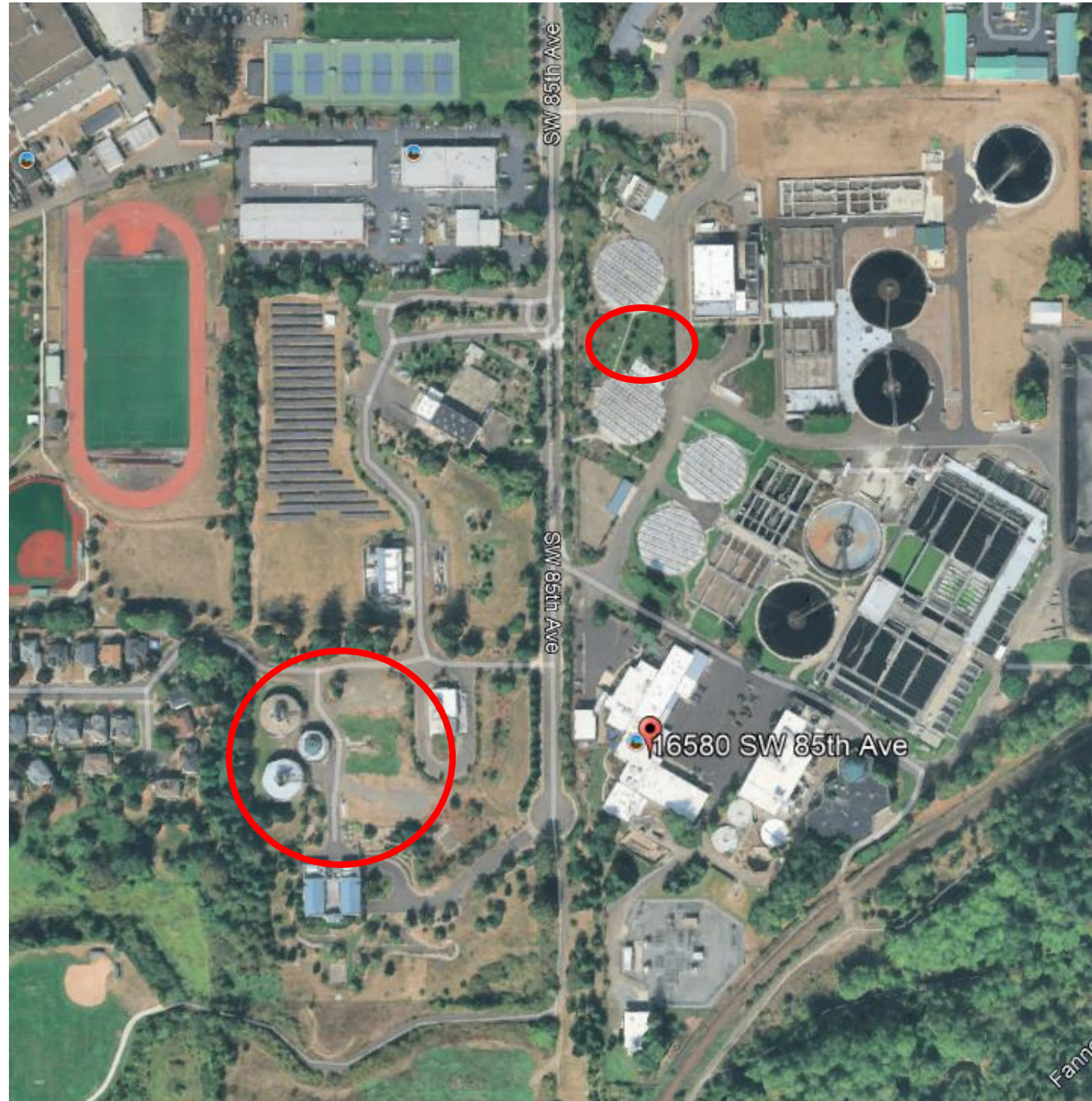
Site information

- *Entrance gate*
- *Staging, laydown, and storage*
- *Deliveries and emergency vehicle access*
- *Site security*
- *Good neighbor*
 - *Parking*
 - *Dust*



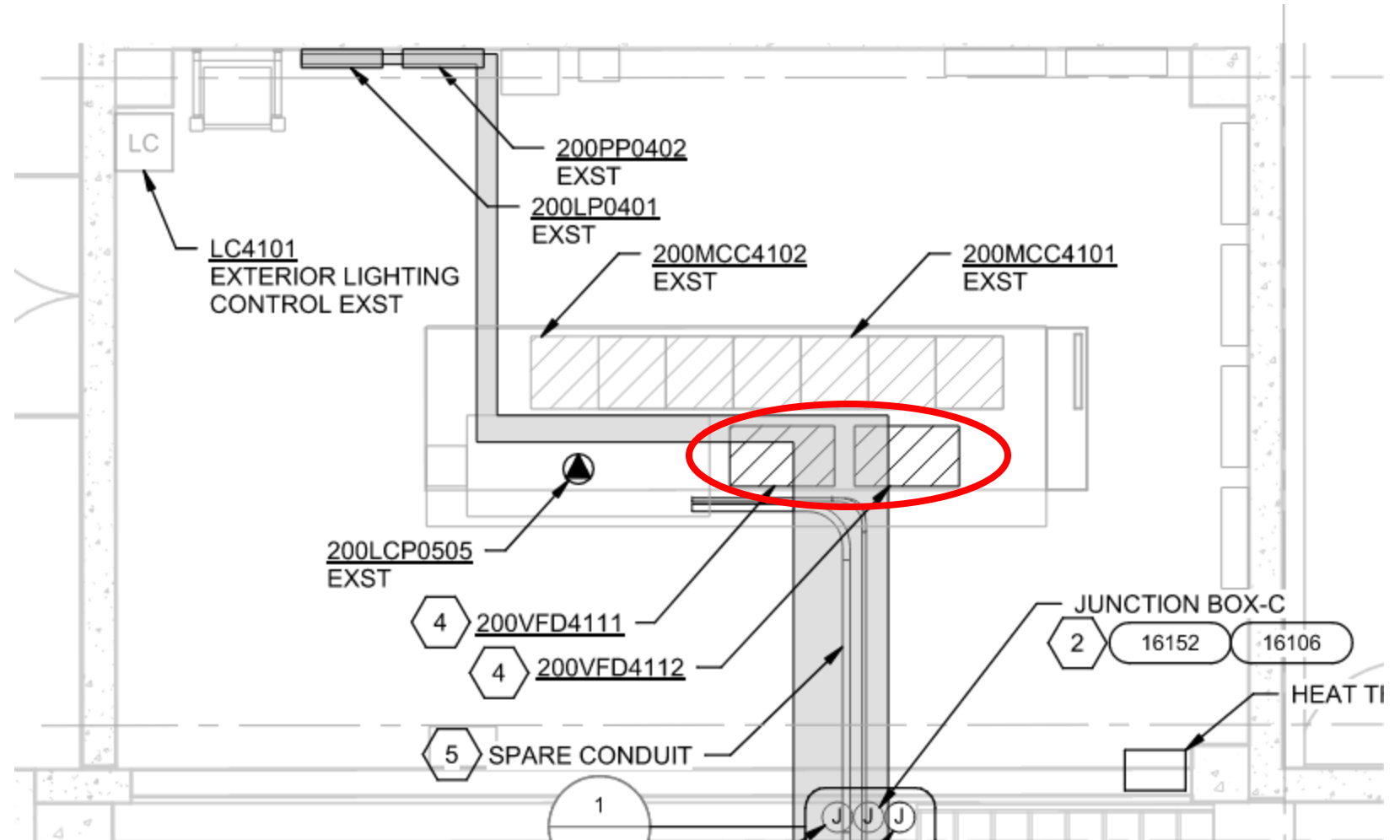
Concurrent Work on Site

- Concurrent work on the site
 - Phase 6B Digester
 - Primary Sludge Pump Station
 - Plant Paving (East Side)



Owner Furnished Equipment

- 60 HP VFDs



Startup and Testing

- *Phased startup for Unit Processes and subsystems – Examples:*
 - *Biofilter Odor Control System*
 - *Odor Control Fans*
- *Refer to Section 01140 Work Restrictions and Section 01756 Testing and Facility Startup*

Addendum 1

- *Delete grout fill of existing FM's below biofilter*
- *ARD Manhole – Protective coating or lining*
- *Grit Dumpster Room – Electrical conduit and conductor replacement*

Project Site Tour

Thank you

