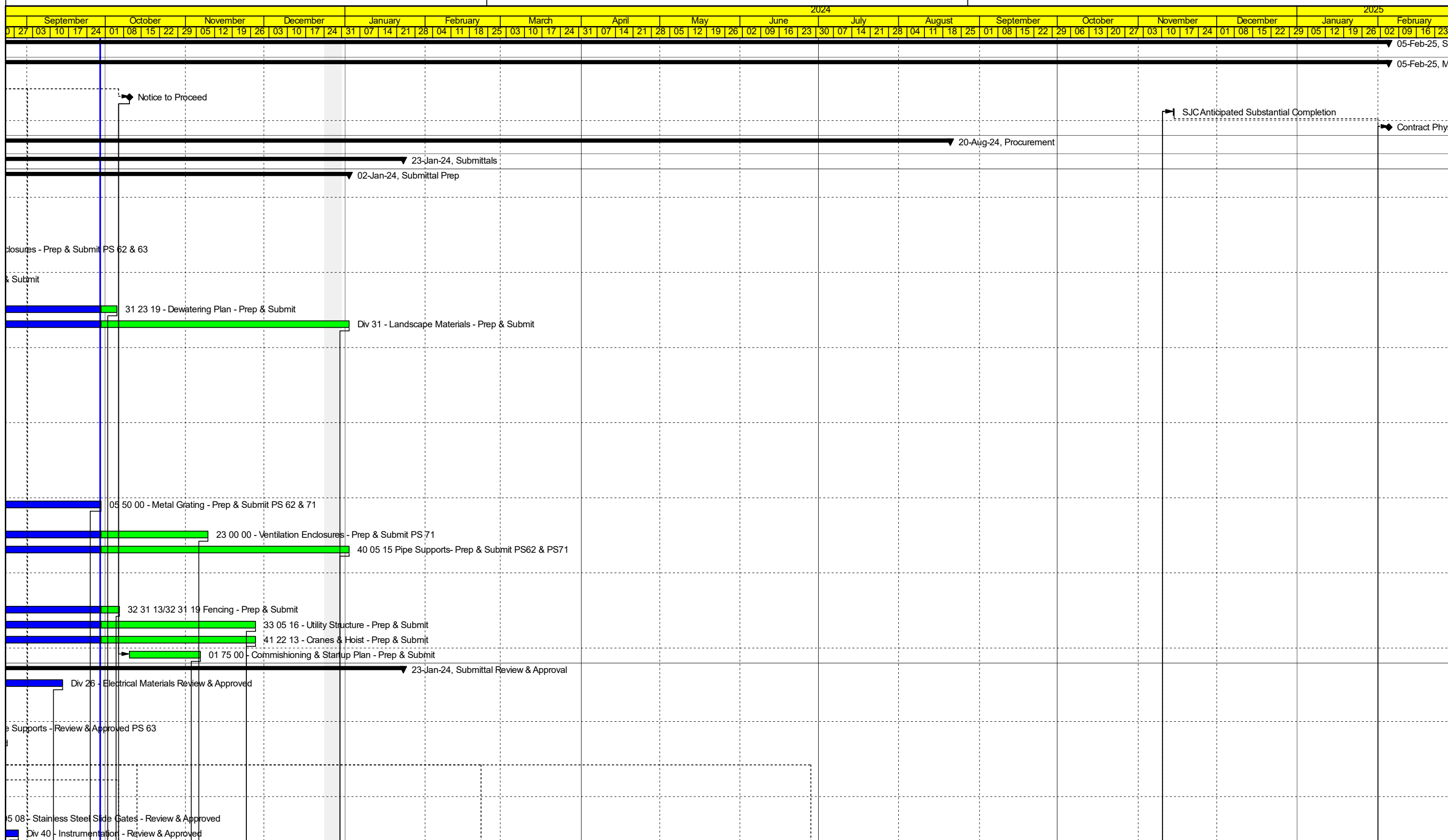


Activity ID	Activity Name	Original Duration	Remaining Duration	Start	Finish	Total Float	Calendar	2023																									
								January			February			March			April			May			June			July			August				
								01	08	15	22	29	05	12	19	26	05	12	19	26	02	09	16	23	30	07	14	21	28	04	11	18	25
SPU PS 62, 63, 71 Improvements - Update 2023-09-29 Rev1		517	339	19-Jan-23 A	05-Feb-25	0																											
Milestones		339	332	19-Jan-23 A	05-Feb-25	0	Standard w/ Basic Holidays																										
A2020	Contract Execution	0	0	19-Jan-23 A			Standard w/ Basic Holidays	◆ Contract Execution																									
A2780	Notice to Proceed	0	0	10-Oct-23*		0	Standard w/ Basic Holidays																										
A3590	SJC Anticipated Substantial Completion	1	1	14-Nov-24	14-Nov-24	55	Standard w/ Basic Holidays																										
A3430	Contract Physical Completion	0	0		05-Feb-25*	0	Standard w/ Basic Holidays																										
Procurement		397	223	19-Jan-23 A	20-Aug-24	52	Standard w/ Basic Holidays																										
Submittals		253	75	19-Jan-23 A	23-Jan-24	200	Standard w/ Basic Holidays																										
Submittal Prep		222	60	19-Jan-23 A	02-Jan-24	200	Standard w/ Basic Holidays																										
A1130	05 12 00 - Structural & Misc Steel - Prep & Submit	77	0	19-Jan-23 A	03-May-23 A		Standard w/ Basic Holidays	05 12 00 - Structural & Misc Steel - Prep & Submit																									
A1140	05 50 00 - Metal Grating - Prep & Submit PS 63	122	0	19-Jan-23 A	08-May-23 A		Standard w/ Basic Holidays	05 50 00 - Metal Grating - Prep & Submit PS 63																									
A1150	09 90 00 - Painting & Coatings - Prep & Submit	127	0	19-Jan-23 A	02-Jun-23 A		Standard w/ Basic Holidays	09 90 00 - Painting & Coatings - Prep & Submit																									
A1160	23 00 00 - Ventilation Fans - Prep & Submit	96	0	19-Jan-23 A	14-Apr-23 A		Standard w/ Basic Holidays	23 00 00 - Ventilation Fans - Prep & Submit																									
A1170	23 00 00 - Ventilation Enclosures - Prep & Submit PS 62 & 63	127	0	19-Jan-23 A	14-Jul-23 A		Standard w/ Basic Holidays	23 00 00 - Ventilation Enclosures - Prep & Submit PS 62 & 63																									
A1180	23 80 00 - Odor Control Equipment	60	0	19-Jan-23 A	13-Apr-23 A		Standard w/ Basic Holidays	23 80 00 - Odor Control Equipment																									
A1200	26 24 19 - Motor Control Centers - Prep & Submit	108	0	19-Jan-23 A	20-Jun-23 A		Standard w/ Basic Holidays	26 24 19 - Motor Control Centers - Prep & Submit																									
A1210	26 29 13 - Combination Motor Starter - Prep & Submit	75	0	19-Jan-23 A	04-May-23 A		Standard w/ Basic Holidays	26 29 13 - Combination Motor Starter - Prep & Submit																									
A1220	31 23 19 - Dewatering Plan - Prep & Submit	60	5	19-Jan-23 A	05-Oct-23	104	Standard w/ Basic Holidays																										
A1230	Div 31 - Landscape Materials - Prep & Submit	60	60	19-Jan-23 A	02-Jan-24	200	Standard w/ Basic Holidays																										
A1260	40 05 08 - Stainless Steel Slide Gates Prep & Submit	60	0	19-Jan-23 A	13-Apr-23 A		Standard w/ Basic Holidays	40 05 08 - Stainless Steel Slide Gates Prep & Submit																									
A1270	40 05 15 Pipe Supports- Prep & Submit PS63	50	0	19-Jan-23 A	30-Mar-23 A		Standard w/ Basic Holidays	40 05 15 Pipe Supports- Prep & Submit PS63																									
A1280	40 23 00 - Process Pipe, Fittings, & Accessories	45	0	19-Jan-23 A	23-Mar-23 A		Standard w/ Basic Holidays	40 23 00 - Process Pipe, Fittings, & Accessories																									
A1320	43 21 13 - Vert Centrifugal Non-Clog Sewage Pumps - Prep & Submit	52	0	19-Jan-23 A	03-Apr-23 A		Standard w/ Basic Holidays	43 21 13 - Vert Centrifugal Non-Clog Sewage Pumps - Prep & Submit																									
A1330	43 21 39 - Sump Pumps	67	0	19-Jan-23 A	24-Apr-23 A		Standard w/ Basic Holidays	43 21 39 - Sump Pumps																									
A1340	01 57 13 - Construction Stormwater & Erosion Control Plan	65	0	19-Jan-23 A	21-Apr-23 A		Standard w/ Basic Holidays	01 57 13 - Construction Stormwater & Erosion Control Plan																									
A1350	00 31 00 - Site Security Plan	65	0	19-Jan-23 A	20-Apr-23 A		Standard w/ Basic Holidays	00 31 00 - Site Security Plan																									
A1360	01 57 13 - Tree, Vegetation, and Soil Protection Plan	55	0	19-Jan-23 A	06-Apr-23 A		Standard w/ Basic Holidays	01 57 13 - Tree, Vegetation, and Soil Protection Plan																									
A1370	01 57 13 - Spill Plan	55	0	19-Jan-23 A	06-Apr-23 A		Standard w/ Basic Holidays	01 57 13 - Spill Plan																									
A3110	26 24 00 - Panelboards - Prep & Submit	70	0	19-Jan-23 A	27-Apr-23 A		Standard w/ Basic Holidays	26 24 00 - Panelboards - Prep & Submit																									
A3280	26 50 00 Lighting - Prep & Submit	80	0	19-Jan-23 A	11-May-23 A		Standard w/ Basic Holidays	26 50 00 Lighting - Prep & Submit																									
A3340	05 50 00 - Metal Grating - Prep & Submit PS 62 & 71	80	0	19-Jan-23 A	29-Sep-23	91	Standard w/ Basic Holidays																										
A3480	26 05 00 EV Charging Station	59	0	19-Jan-23 A	13-Apr-23 A		Standard w/ Basic Holidays	26 05 00 EV Charging Station																									
A3350	23 00 00 - Ventilation Enclosures - Prep & Submit PS 71	80	30	30-Jan-23 A	09-Nov-23	158	Standard w/ Basic Holidays																										
A3360	40 05 15 Pipe Supports- Prep & Submit PS62 & PS71	215	60	30-Jan-23 A	02-Jan-24	5	Standard w/ Basic Holidays																										
A1190	Div 26 - Electrical Materials - Prep & Submit	1	0	13-Mar-23 A	13-Mar-23 A		Standard w/ Basic Holidays	Div 26 - Electrical Materials - Prep & Submit																									
A1290	40 23 01 - Pump Station Valves - Prep & Submit	1	0	21-Mar-23 A	21-Mar-23 A		Standard w/ Basic Holidays	40 23 01 - Pump Station Valves - Prep & Submit																									
A1300	Div 40 - Instrumentation - Prep & Submit	1	0	13-Apr-23 A	13-Apr-23 A		Standard w/ Basic Holidays	Div 40 - Instrumentation - Prep & Submit																									
A1240	32 31 13/32 31 19 Fencing - Prep & Submit	6	6	19-Jun-23 A	06-Oct-23	68	Standard w/ Basic Holidays																										
A1250	33 05 16 - Utility Structure - Prep & Submit	40	40	19-Jun-23 A	27-Nov-23	186	Standard w/ Basic Holidays																										
A1310	41 22 13 - Cranes & Hoist - Prep & Submit	40	40	19-Jun-23 A	27-Nov-23	119	Standard w/ Basic Holidays																										
A3370	01 75 00 - Commishioning & Startup Plan - Prep & Submit	20	20	10-Oct-23	06-Nov-23	34	Standard w/ Basic Holidays																										
Submittal Review & Approval		217	75	13-Mar-23 A	23-Jan-24	200	Standard w/ Basic Holidays																										
A1830	Div 26 - Electrical Materials Review & Approved	132	0	13-Mar-23 A	14-Sep-23 A		Standard w/ Basic Holidays																										
A1930	40 23 01 - Pump Station Valves - Review & Approved	15	0	21-Mar-23 A	01-May-23 A		Standard w/ Basic Holidays	40 23 01 - Pump Station Valves - Review & Approved																									
A1920	40 23 00 - Process Pipe, Fittings, & Accessories - Review & Approved	15	0	23-Mar-23 A	12-Apr-23 A		Standard w/ Basic Holidays	40 23 00 - Process Pipe, Fittings, & Accessories - Review & Approved																									
A1910	40 05 15 Pipe Supports - Review & Approved PS 63	87	0	30-Mar-23 A	31-Jul-23 A		Standard w/ Basic Holidays	40 05 15 Pipe Supports - Review & Approved PS 63																									
A1960	43 21 13 - Vert Centrifugal Non-Clog Sewage Pumps - Review & Approved	30	0	03-Apr-23 A	03-May-23 A		Standard w/ Basic Holidays	43 21 13 - Vert Centrifugal Non-Clog Sewage Pumps - Review & Approved																									
A2000	01 57 13 - Tree, Vegetation, and Soil Protection Plan - Review & Approved	8	0	06-Apr-23 A	14-Apr-23 A		Standard w/ Basic Holidays	01 57 13 - Tree, Vegetation, and Soil Protection Plan - Review & Approved																									
A2010	01 57 13 - Spill Plan - Review & Approved	24	0	06-Apr-23 A	08-May-23 A		Standard w/ Basic Holidays	01 57 13 - Spill Plan - Review & Approved																									
A3490	26 05 00 - EV Charing Station - Review & Approved	15	0	12-Apr-23 A	02-May-23 A		Standard w/ Basic Holidays	26 05 00 - EV Charing Station - Review & Approved																									
A1820	23 80 00 - Odor Control Equipment - Review & Approved	18	0	13-Apr-23 A	08-May-23 A		Standard w/ Basic Holidays	23 80 00 - Odor Control Equipment - Review & Approved																									
A1900	40 05 08 - Stainless Steel Slide Gates - Review & Approved	87	0	13-Apr-23 A	14-Aug-23 A		Standard w/ Basic Holidays	40 05 08 - Stainless Steel Slide Gates - Review & Approved																									
A1940	Div 40 - Instrumentation - Review & Approved	97	0	13-Apr-23 A	28-Aug-23 A		Standard w/ Basic Holidays																										

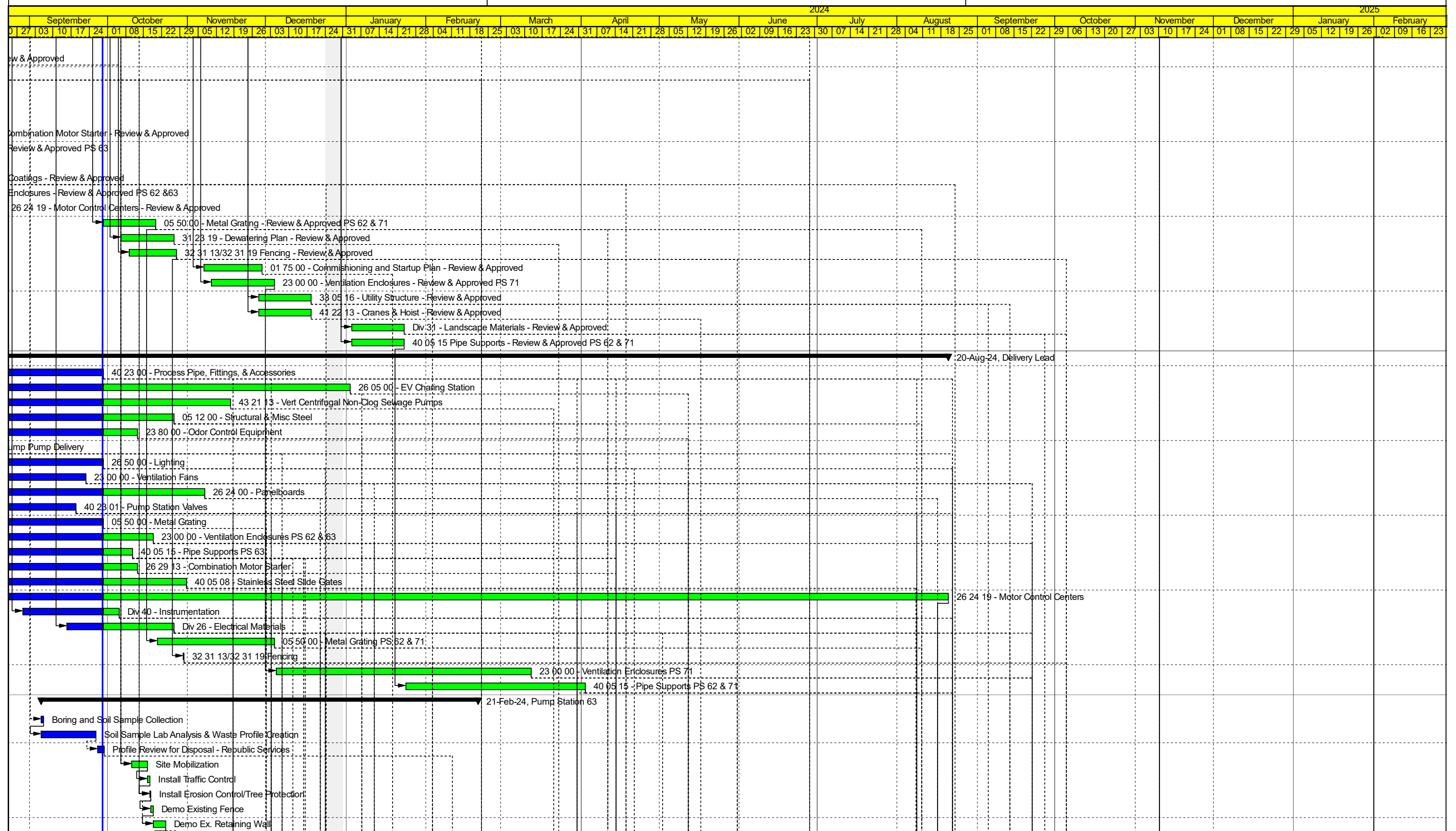
█ Remaining Level of Effort
 █ Actual Work
 █ Critical Remaining Work
█ Actual Level of Effort
 █ Remaining Work
 ◆ Milestone



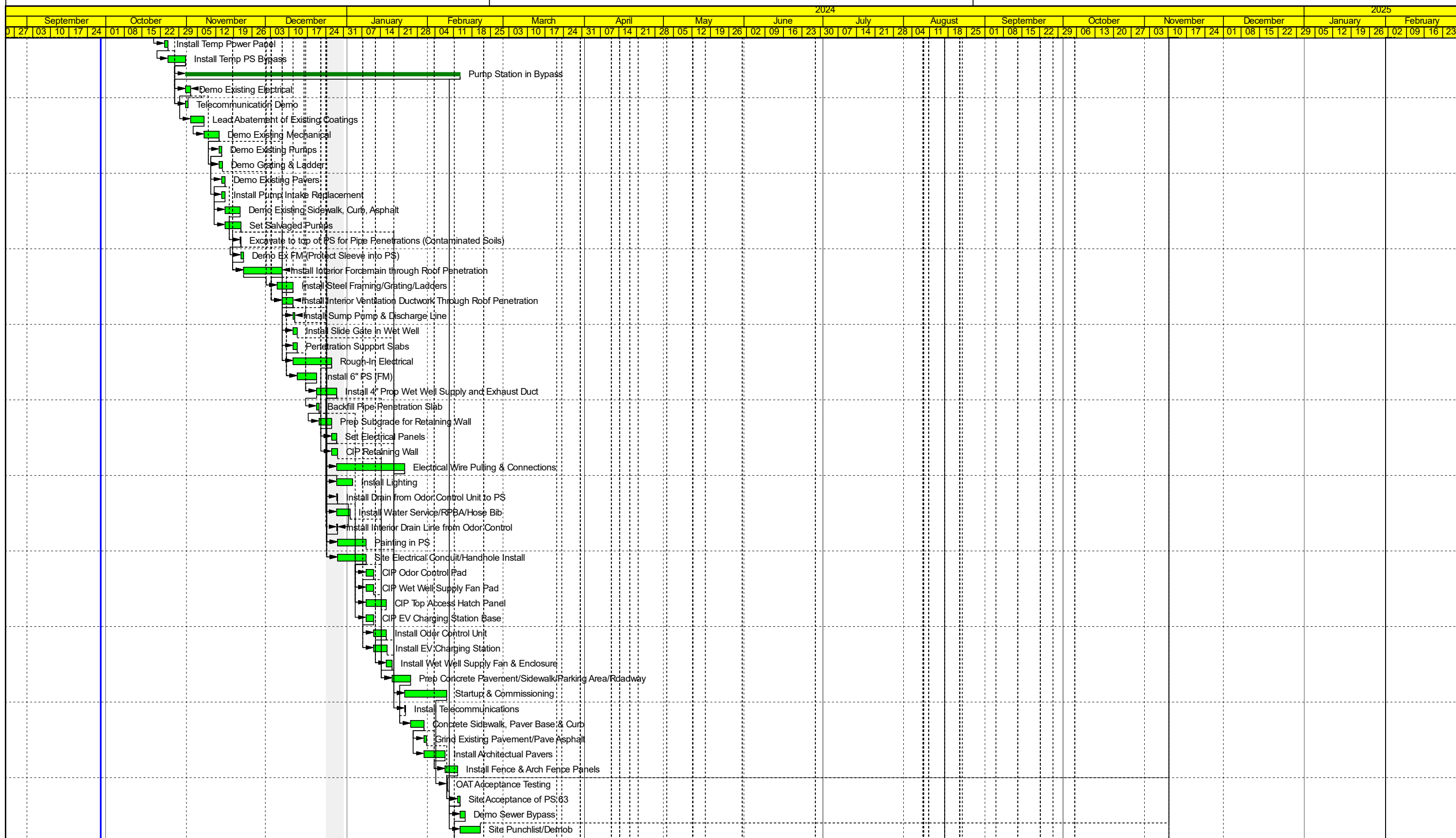
■ Remaining Level of Effort
 ■ Actual Work
 ■ Critical Remaining Work
■ Actual Level of Effort
 ■ Remaining Work
 ◆ Milestone

Activity ID	Activity Name	Original Duration	Remaining Duration	Start	Finish	Total Float	Calendar	2023																															
								January				February				March				April				May				June				July				August			
								01	08	15	22	29	05	12	19	26	02	09	16	23	30	06	13	20	27	04	11	18	25	01	08	15	22	29	05	12	19	26	02
A1800	23 00 00 - Ventilation Fans - Review & Approved	36	0	14-Apr-23 A	02-Jun-23 A		Standard w/ Basic Holidays	[Gantt bar: 14-Apr-23 to 02-Jun-23]																															
A1990	00 31 00 - Site Security Plan - Review & Approved	50	0	20-Apr-23 A	28-Jun-23 A		Standard w/ Basic Holidays	[Gantt bar: 20-Apr-23 to 28-Jun-23]																															
A1980	01 57 13 - Construction Stormwater & Erosion Control Plan - Review & Approved	1	0	21-Apr-23 A	21-Apr-23 A		Standard w/ Basic Holidays	[Gantt bar: 21-Apr-23 to 21-Apr-23]																															
A1970	43 21 39 - Sump Pumps - Review & Approved	7	0	24-Apr-23 A	02-May-23 A		Standard w/ Basic Holidays	[Gantt bar: 24-Apr-23 to 02-May-23]																															
A3250	26 24 00 - Panelboards - Review & Approve	27	0	27-Apr-23 A	02-Jun-23 A		Standard w/ Basic Holidays	[Gantt bar: 27-Apr-23 to 02-Jun-23]																															
A1770	05 12 00 - Structural & Misc Steel - Review & Approved	4	0	03-May-23 A	08-May-23 A		Standard w/ Basic Holidays	[Gantt bar: 03-May-23 to 08-May-23]																															
A1850	26 29 13 - Combination Motor Starter - Review & Approved	64	0	04-May-23 A	02-Aug-23 A		Standard w/ Basic Holidays	[Gantt bar: 04-May-23 to 02-Aug-23]																															
A1780	05 50 00 - Metal Grating - Review & Approved PS 63	46	0	08-May-23 A	11-Jul-23 A		Standard w/ Basic Holidays	[Gantt bar: 08-May-23 to 11-Jul-23]																															
A3270	26 50 00 Lighting - Review & Approved	5	0	11-May-23 A	17-May-23 A		Standard w/ Basic Holidays	[Gantt bar: 11-May-23 to 17-May-23]																															
A1790	09 90 00 - Painting & Coatings - Review & Approved	32	0	02-Jun-23 A	18-Jul-23 A		Standard w/ Basic Holidays	[Gantt bar: 02-Jun-23 to 18-Jul-23]																															
A1810	23 00 00 - Ventilation Enclosures - Review & Approved PS 62 & 63	13	0	14-Jun-23 A	18-Jul-23 A		Standard w/ Basic Holidays	[Gantt bar: 14-Jun-23 to 18-Jul-23]																															
A1840	26 24 19 - Motor Control Centers - Review & Approved	44	0	20-Jun-23 A	21-Aug-23 A		Standard w/ Basic Holidays	[Gantt bar: 20-Jun-23 to 21-Aug-23]																															
A3400	05 50 00 - Metal Grating - Review & Approved PS 62 & 71	15	15	29-Sep-23	19-Oct-23	91	Standard w/ Basic Holidays	[Gantt bar: 29-Sep-23 to 19-Oct-23]																															
A1860	31 23 19 - Dewatering Plan - Review & Approved	15	15	06-Oct-23	26-Oct-23	104	Standard w/ Basic Holidays	[Gantt bar: 06-Oct-23 to 26-Oct-23]																															
A1880	32 31 13/32 31 19 Fencing - Review & Approved	15	15	09-Oct-23	27-Oct-23	68	Standard w/ Basic Holidays	[Gantt bar: 09-Oct-23 to 27-Oct-23]																															
A3560	01 75 00 - Commishioning and Startup Plan - Review & Approved	15	15	07-Nov-23	29-Nov-23	34	Standard w/ Basic Holidays	[Gantt bar: 07-Nov-23 to 29-Nov-23]																															
A3380	23 00 00 - Ventilation Enclosures - Review & Approved PS 71	15	15	10-Nov-23	04-Dec-23	158	Standard w/ Basic Holidays	[Gantt bar: 10-Nov-23 to 04-Dec-23]																															
A1890	33 05 16 - Utility Structure - Review & Approved	15	15	28-Nov-23	18-Dec-23	186	Standard w/ Basic Holidays	[Gantt bar: 28-Nov-23 to 18-Dec-23]																															
A1950	41 22 13 - Cranes & Hoist - Review & Approved	15	15	28-Nov-23	18-Dec-23	119	Standard w/ Basic Holidays	[Gantt bar: 28-Nov-23 to 18-Dec-23]																															
A1870	Div 31 - Landscape Materials - Review & Approved	15	15	03-Jan-24	23-Jan-24	200	Standard w/ Basic Holidays	[Gantt bar: 03-Jan-24 to 23-Jan-24]																															
A3390	40 05 15 Pipe Supports - Review & Approved PS 62 & 71	15	15	03-Jan-24	23-Jan-24	5	Standard w/ Basic Holidays	[Gantt bar: 03-Jan-24 to 23-Jan-24]																															
Delivery Lead		338	223	13-Apr-23 A	20-Aug-24	45	Standard w/ Basic Holidays	[Gantt bar: 13-Apr-23 to 20-Aug-24]																															
A3190	40 23 00 - Process Pipe, Fittings, & Accessories	50	0	13-Apr-23 A	29-Sep-23 A		Standard w/ Basic Holidays	[Gantt bar: 13-Apr-23 to 29-Sep-23]																															
A3510	26 05 00 - EV Charing Station	60	60	02-May-23 A	02-Jan-24	15	Standard w/ Basic Holidays	[Gantt bar: 02-May-23 to 02-Jan-24]																															
A3210	43 21 13 - Vert Centrifugal Non-Clog Sewage Pumps	140	36	04-May-23 A	17-Nov-23	90	Standard w/ Basic Holidays	[Gantt bar: 04-May-23 to 17-Nov-23]																															
A3220	05 12 00 - Structural & Misc Steel	50	20	09-May-23 A	26-Oct-23	44	Standard w/ Basic Holidays	[Gantt bar: 09-May-23 to 26-Oct-23]																															
A3140	23 80 00 - Odor Control Equipment	85	10	09-May-23 A	12-Oct-23	61	Standard w/ Basic Holidays	[Gantt bar: 09-May-23 to 12-Oct-23]																															
A3470	43 21 39 - Sump Pump Delivery	60	0	09-May-23 A	01-Aug-23 A		Standard w/ Basic Holidays	[Gantt bar: 09-May-23 to 01-Aug-23]																															
A3290	26 50 00 - Lighting	45	0	18-May-23 A	29-Sep-23	60	Standard w/ Basic Holidays	[Gantt bar: 18-May-23 to 29-Sep-23]																															
A3120	23 00 00 - Ventilation Fans	65	0	05-Jun-23 A	22-Sep-23 A		Standard w/ Basic Holidays	[Gantt bar: 05-Jun-23 to 22-Sep-23]																															
A3260	26 24 00 - Panelboards	110	28	05-Jun-23 A	07-Nov-23	31	Standard w/ Basic Holidays	[Gantt bar: 05-Jun-23 to 07-Nov-23]																															
A3200	40 23 01 - Pump Station Valves	50	0	10-Jul-23 A	19-Sep-23 A		Standard w/ Basic Holidays	[Gantt bar: 10-Jul-23 to 19-Sep-23]																															
A3230	05 50 00 - Metal Grating	45	0	12-Jul-23 A	29-Sep-23	64	Standard w/ Basic Holidays	[Gantt bar: 12-Jul-23 to 29-Sep-23]																															
A3130	23 00 00 - Ventilation Enclosures PS 62 & 63	65	14	19-Jul-23 A	18-Oct-23	59	Standard w/ Basic Holidays	[Gantt bar: 19-Jul-23 to 18-Oct-23]																															
A3180	40 05 15 - Pipe Supports PS 63	50	8	01-Aug-23 A	10-Oct-23	33	Standard w/ Basic Holidays	[Gantt bar: 01-Aug-23 to 10-Oct-23]																															
A3160	26 29 13 - Combination Motor Starter	50	10	03-Aug-23 A	12-Oct-23	49	Standard w/ Basic Holidays	[Gantt bar: 03-Aug-23 to 12-Oct-23]																															
A3170	40 05 08 - Stainless Steel Slide Gates	90	23	15-Aug-23 A	31-Oct-23	52	Standard w/ Basic Holidays	[Gantt bar: 15-Aug-23 to 31-Oct-23]																															
A3150	26 24 19 - Motor Control Centers	250	223	22-Aug-23 A	20-Aug-24	25	Standard w/ Basic Holidays	[Gantt bar: 22-Aug-23 to 20-Aug-24]																															
A3300	Div 40 - Instrumentation	50	5	29-Aug-23 A	05-Oct-23	36	Standard w/ Basic Holidays	[Gantt bar: 29-Aug-23 to 05-Oct-23]																															
A3240	Div 26 - Electrical Materials	30	20	15-Sep-23 A	26-Oct-23	39	Standard w/ Basic Holidays	[Gantt bar: 15-Sep-23 to 26-Oct-23]																															
A3570	05 50 00 - Metal Grating PS 62 & 71	30	30	20-Oct-23	04-Dec-23	91	Standard w/ Basic Holidays	[Gantt bar: 20-Oct-23 to 04-Dec-23]																															
A3500	32 31 13/32 31 19 Fencing	1	1	30-Oct-23	30-Oct-23	68	Standard w/ Basic Holidays	[Gantt bar: 30-Oct-23 to 30-Oct-23]																															
A3410	23 00 00 - Ventilation Enclosures PS 71	65	65	05-Dec-23	12-Mar-24	158	Standard w/ Basic Holidays	[Gantt bar: 05-Dec-23 to 12-Mar-24]																															
A3420	40 05 15 - Pipe Supports PS 62 & 71	50	50	24-Jan-24	02-Apr-24	5	Standard w/ Basic Holidays	[Gantt bar: 24-Jan-24 to 02-Apr-24]																															
Pump Station 63		113	88	05-Sep-23 A	21-Feb-24	243		[Gantt bar: 05-Sep-23 to 21-Feb-24]																															
A3440	Boring and Soil Sample Collection	1	0	05-Sep-23 A	06-Sep-23 A		SPU 4x10 Schedule	[Gantt bar: 05-Sep-23 to 06-Sep-23]																															
A3450	Soil Sample Lab Analysis & Waste Profile Creation	1	0	05-Sep-23 A	26-Sep-23 A		SPU 4x10 Schedule	[Gantt bar: 05-Sep-23 to 26-Sep-23]																															
A3460	Profile Review for Disposal - Republic Services	2	0	27-Sep-23 A	29-Sep-23 A		SPU 4x10 Schedule	[Gantt bar: 27-Sep-23 to 29-Sep-23]																															
A2570	Site Mobilization	3	3	10-Oct-23	16-Oct-23	2	SPU 4x10 Schedule	[Gantt bar: 10-Oct-23 to 16-Oct-23]																															
A3100	Install Traffic Control	1	1	16-Oct-23	17-Oct-23	2	SPU 4x10 Schedule	[Gantt bar: 16-Oct-23 to 17-Oct-23]																															
A2580	Install Erosion Control/Tree Protection	1	1	17-Oct-23	17-Oct-23	2	SPU 4x10 Schedule	[Gantt bar: 17-Oct-23 to 17-Oct-23]																															
A2620	Demo Existing Fence	1	1	17-Oct-23	18-Oct-23	2	SPU 4x10 Schedule	[Gantt bar: 17-Oct-23 to 18-Oct-23]																															
A2590	Demo Ex. Retaining Wall	2	2	18-Oct-23	23-Oct-23	2	SPU 4x10 Schedule	[Gantt bar: 18-Oct-23 to 23-Oct-23]																															

█ Remaining Level of Effort
 █ Actual Work
 █ Critical Remaining Work
█ Actual Level of Effort
 █ Remaining Work
 ◆ Milestone



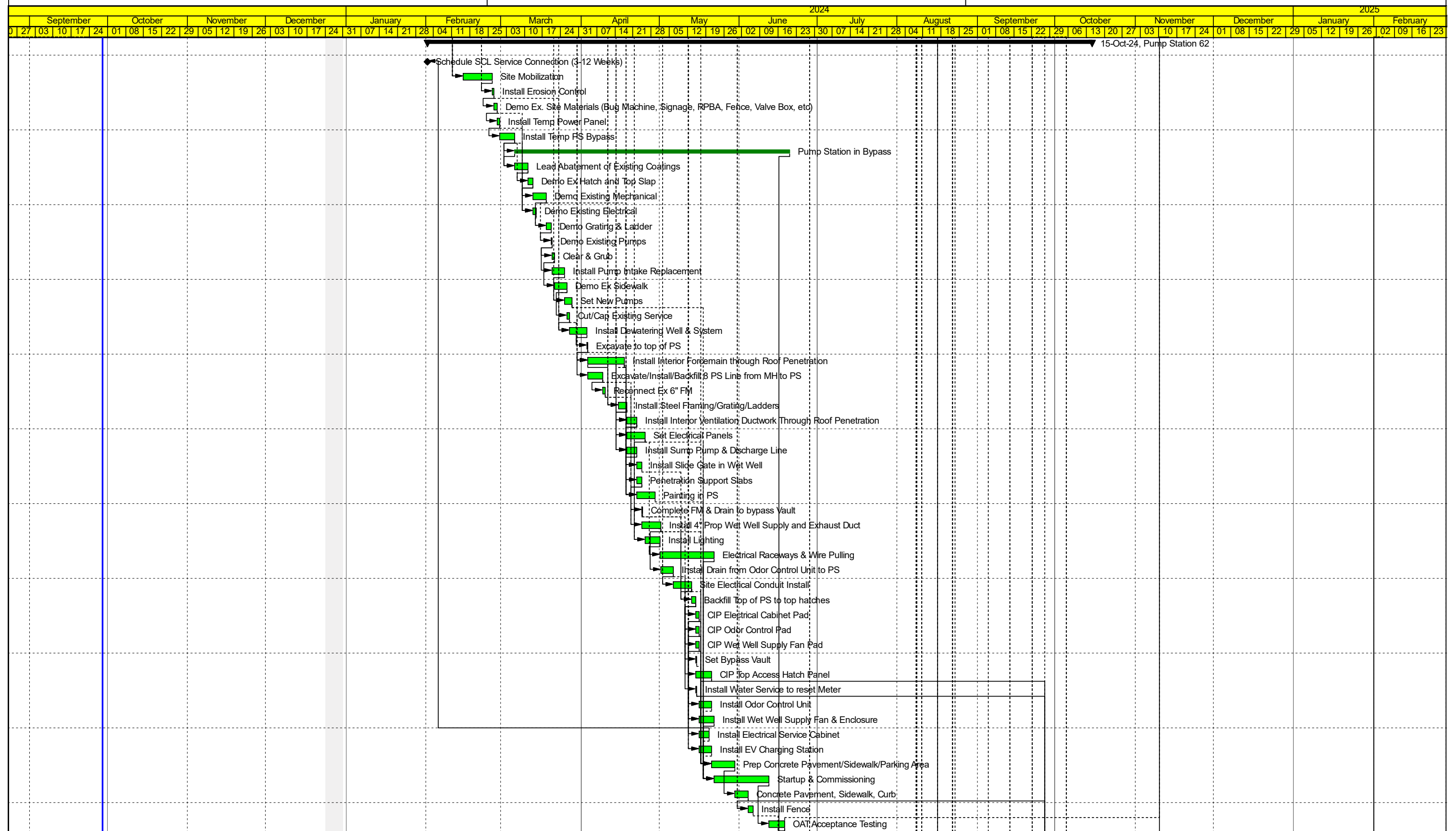
█ Remaining Level of Effort
 █ Actual Work
 █ Critical Remaining Work
█ Actual Level of Effort
 █ Remaining Work
 ◆ Milestone



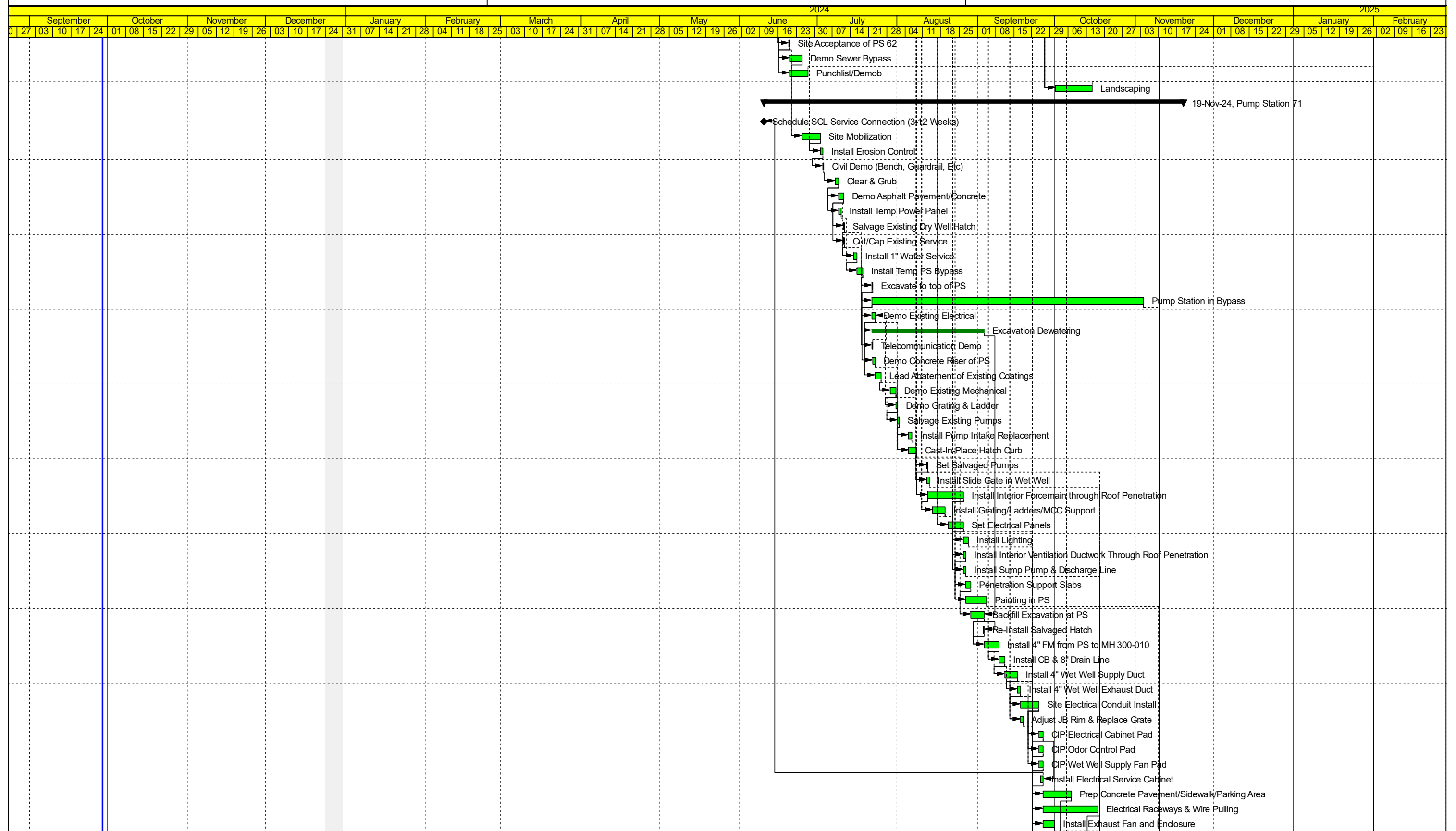
█ Remaining Level of Effort
 █ Actual Work
 █ Critical Remaining Work
█ Actual Level of Effort
 █ Remaining Work
 ◆ Milestone

Activity ID	Activity Name	Original Duration	Remaining Duration	Start	Finish	Total Float	Calendar	2023																															
								January				February				March				April				May				June				July				August			
								01	08	15	22	29	05	12	19	26	05	12	19	26	02	09	16	23	30	07	14	21	28	04	11	18	25	02	09	16	23	30	06
Pump Station 62		180	180	01-Feb-24	15-Oct-24	78																																	
A3650	Schedule SCL Service Connection (3-12 Weeks)	0	0	01-Feb-24		200	SPU 4x10 Schedule																																
A2030	Site Mobilization	4	4	15-Feb-24	26-Feb-24	3	SPU 4x10 Schedule																																
A2040	Install Erosion Control	1	1	26-Feb-24	27-Feb-24	3	SPU 4x10 Schedule																																
A2070	Demo Ex. Site Materials (Bug Machine, Signage, RPBA, Fence, Valve Box, etc)	2	2	27-Feb-24	28-Feb-24	3	SPU 4x10 Schedule																																
A2090	Install Temp Power Panel	1	1	28-Feb-24	29-Feb-24	3	SPU 4x10 Schedule																																
A2130	Install Temp PS Bypass	2	2	29-Feb-24	06-Mar-24	3	SPU 4x10 Schedule																																
A2150	Pump Station in Bypass	60	60	06-Mar-24	20-Jun-24	5	SPU 4x10 Schedule																																
A2170	Lead Abatement of Existing Coatings	2	2	06-Mar-24	11-Mar-24	3	SPU 4x10 Schedule																																
A2080	Demo Ex Hatch and Top Slap	2	2	11-Mar-24	13-Mar-24	3	SPU 4x10 Schedule																																
A2180	Demo Existing Mechanical	2	2	13-Mar-24	18-Mar-24	3	SPU 4x10 Schedule																																
A2160	Demo Existing Electrical	2	2	13-Mar-24	14-Mar-24	4	SPU 4x10 Schedule																																
A2190	Demo Grating & Ladder	2	2	18-Mar-24	20-Mar-24	3	SPU 4x10 Schedule																																
A2200	Demo Existing Pumps	1	1	20-Mar-24	20-Mar-24	3	SPU 4x10 Schedule																																
A2050	Clear & Grub	1	1	20-Mar-24	21-Mar-24	3	SPU 4x10 Schedule																																
A2210	Install Pump Intake Replacement	2	2	20-Mar-24	25-Mar-24	6	SPU 4x10 Schedule																																
A2060	Demo Ex Sidewalk	2	2	21-Mar-24	26-Mar-24	3	SPU 4x10 Schedule																																
A2220	Set New Pumps	3	3	25-Mar-24	28-Mar-24	6	SPU 4x10 Schedule																																
A2110	Cut/Cap Existing Service	1	1	26-Mar-24	27-Mar-24	3	SPU 4x10 Schedule																																
A2100	Install Dewatering Well & System	4	4	27-Mar-24	03-Apr-24	3	SPU 4x10 Schedule																																
A2140	Excavate to top of PS	1	1	03-Apr-24	03-Apr-24	3	SPU 4x10 Schedule																																
A2240	Install Interior Forcemain through Roof Penetration	8	8	03-Apr-24	17-Apr-24	3	SPU 4x10 Schedule																																
A2320	Excavate/Install/Backfill 8 PS Line from MH to PS	2	2	03-Apr-24	09-Apr-24	9	SPU 4x10 Schedule																																
A2330	Reconnect Ex 6" FM	1	1	09-Apr-24	10-Apr-24	9	SPU 4x10 Schedule																																
A2250	Install Steel Framing/Grating/Ladders	3	3	15-Apr-24	18-Apr-24	3	SPU 4x10 Schedule																																
A2270	Install Interior Ventilation Ductwork Through Roof Penetration	1	1	18-Apr-24	22-Apr-24	3	SPU 4x10 Schedule																																
A2260	Set Electrical Panels	4	4	18-Apr-24	25-Apr-24	3	SPU 4x10 Schedule																																
A2280	Install Sump Pump & Discharge Line	1	1	18-Apr-24	22-Apr-24	17	SPU 4x10 Schedule																																
A2230	Install Slide Gate in Wet Well	2	2	22-Apr-24	24-Apr-24	13	SPU 4x10 Schedule																																
A2290	Penetration Support Slabs	2	2	22-Apr-24	24-Apr-24	3	SPU 4x10 Schedule																																
A2300	Painting in PS	4	4	22-Apr-24	29-Apr-24	17	SPU 4x10 Schedule																																
A2350	Complete FM & Drain to bypass Vault	1	1	24-Apr-24	24-Apr-24	13	SPU 4x10 Schedule																																
A2360	Install 4" Prop Wet Well Supply and Exhaust Duct	5	5	24-Apr-24	01-May-24	3	SPU 4x10 Schedule																																
A2340	Install Lighting	2	2	25-Apr-24	01-May-24	3	SPU 4x10 Schedule																																
A2310	Electrical Raceways & Wire Pulling	12	12	01-May-24	22-May-24	3	SPU 4x10 Schedule																																
A2550	Install Drain from Odor Control Unit to PS	2	2	01-May-24	06-May-24	3	SPU 4x10 Schedule																																
A2370	Site Electrical Conduit Install	4	4	06-May-24	13-May-24	3	SPU 4x10 Schedule																																
A2520	Backfill Top of PS to top hatches	2	2	13-May-24	15-May-24	3	SPU 4x10 Schedule																																
A2380	CIP Electrical Cabinet Pad	2	2	15-May-24	16-May-24	4	SPU 4x10 Schedule																																
A2390	CIP Odor Control Pad	2	2	15-May-24	16-May-24	4	SPU 4x10 Schedule																																
A2400	CIP Wet Well Supply Fan Pad	2	2	15-May-24	16-May-24	3	SPU 4x10 Schedule																																
A2530	Set Bypass Vault	1	1	15-May-24	15-May-24	14	SPU 4x10 Schedule																																
A2540	CIP Top Access Hatch Panel	3	3	15-May-24	21-May-24	12	SPU 4x10 Schedule																																
A2560	Install Water Service to reset Meter	1	1	15-May-24	15-May-24	14	SPU 4x10 Schedule																																
A2410	Install Odor Control Unit	2	2	16-May-24	21-May-24	4	SPU 4x10 Schedule																																
A2420	Install Wet Well Supply Fan & Enclosure	2	2	16-May-24	22-May-24	3	SPU 4x10 Schedule																																
A2440	Install Electrical Service Cabinet	1	1	16-May-24	20-May-24	5	SPU 4x10 Schedule																																
A2510	Install EV Charging Station	2	2	16-May-24	21-May-24	4	SPU 4x10 Schedule																																
A2430	Prep Concrete Pavement/Sidewalk/Parking Area	5	5	21-May-24	30-May-24	12	SPU 4x10 Schedule																																
A2480	Startup & Commissioning	8	8	22-May-24	12-Jun-24	2	SPU Startup																																
A2450	Concrete Pavement, Sidewalk, Curb	2	2	30-May-24	04-Jun-24	12	SPU 4x10 Schedule																																
A2460	Install Fence	2	2	04-Jun-24	06-Jun-24	12	SPU 4x10 Schedule																																
A3620	OAT Acceptance Testing	7	7	12-Jun-24	18-Jun-24	9	7-day workweek																																

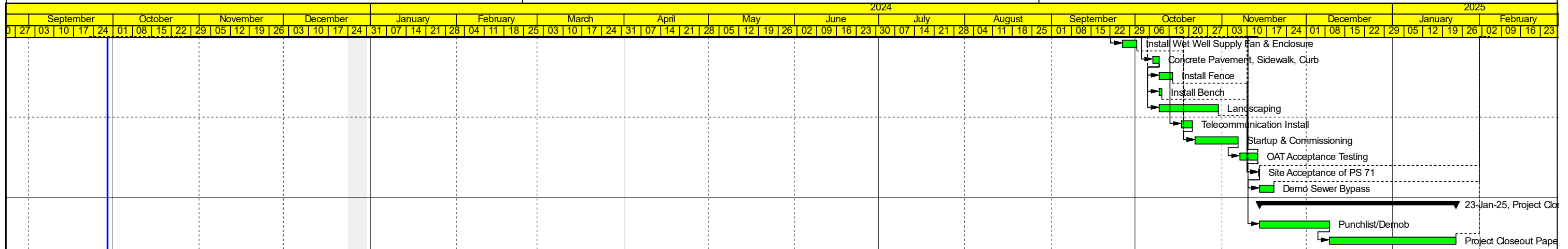
■ Remaining Level of Effort
 ■ Actual Work
 ■ Critical Remaining Work
■ Actual Level of Effort
 ■ Remaining Work
 ◆ Milestone



█ Remaining Level of Effort
 █ Actual Work
 █ Critical Remaining Work
█ Actual Level of Effort
 █ Remaining Work
 ◆ Milestone



█ Remaining Level of Effort
 █ Actual Work
 █ Critical Remaining Work
█ Actual Level of Effort
 █ Remaining Work
 ◆ Milestone



█ Remaining Level of Effort
 █ Actual Work
 █ Critical Remaining Work
█ Actual Level of Effort
 █ Remaining Work
 ◆ Milestone