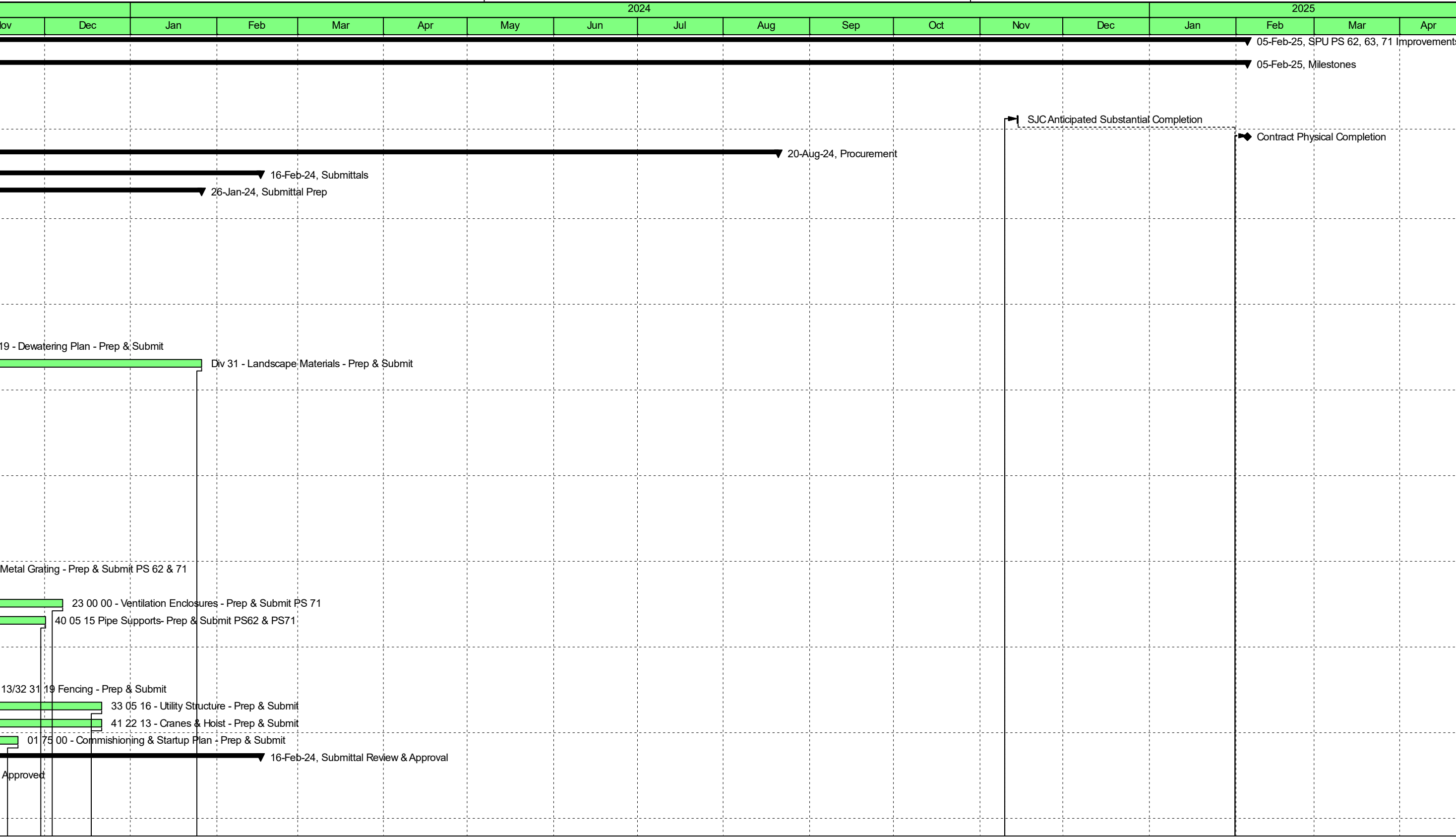


Activity ID	Activity Name	Original Duration	Remaining Duration	Start	Finish	Total Float	2023												
							Feb	Mar	Apr	May	Jun	Jul	Aug	Sep	Oct	Nov			
SPU PS 62, 63, 71 Improvements - Update 2023-10																			
Milestones																			
A2020	Contract Execution	0	0	19-Jan-23 A															
A2780	Notice to Proceed	0	0	10-Oct-23 A															
A3590	SJC Anticipated Substantial Completion	1	1	14-Nov-24	14-Nov-24	55													
A3430	Contract Physical Completion	0	0		05-Feb-25*	0													
Procurement																			
Submittals																			
Submittal Prep																			
A1130	05 12 00 - Structural & Misc Steel - Prep & Submit	77	0	19-Jan-23 A	03-May-23														
A1140	05 50 00 - Metal Grating - Prep & Submit PS 63	122	0	19-Jan-23 A	08-May-23														
A1150	09 90 00 - Painting & Coatings - Prep & Submit	127	0	19-Jan-23 A	02-Jun-23														
A1160	23 00 00 - Ventilation Fans - Prep & Submit	96	0	19-Jan-23 A	14-Apr-23														
A1170	23 00 00 - Ventilation Enclosures - Prep & Submit PS 62 & 63	127	0	19-Jan-23 A	14-Jul-23 A														
A1180	23 80 00 - Odor Control Equipment	60	0	19-Jan-23 A	13-Apr-23														
A1200	26 24 19 - Motor Control Centers - Prep & Submit	108	0	19-Jan-23 A	20-Jun-23														
A1210	26 29 13 - Combination Motor Starter - Prep & Submit	75	0	19-Jan-23 A	04-May-23														
A1220	31 23 19 - Dewatering Plan - Prep & Submit	60	5	19-Jan-23 A	31-Oct-23	86													
A1230	Div 31 - Landscape Materials - Prep & Submit	60	60	19-Jan-23 A	26-Jan-24	182													
A1260	40 05 08 - Stainless Steel Slide Gates Prep & Submit	60	0	19-Jan-23 A	13-Apr-23														
A1270	40 05 15 Pipe Supports- Prep & Submit PS63	50	0	19-Jan-23 A	30-Mar-23														
A1280	40 23 00 - Process Pipe, Fittings, & Accessories	45	0	19-Jan-23 A	23-Mar-23														
A1320	43 21 13 - Vert Centrifugal Non-Clog Sewage Pump	52	0	19-Jan-23 A	03-Apr-23														
A1330	43 21 39 - Sump Pumps	67	0	19-Jan-23 A	24-Apr-23														
A1340	01 57 13 - Construction Stormwater & Erosion Control Plan	65	0	19-Jan-23 A	21-Apr-23														
A1350	00 31 00 - Site Security Plan	65	0	19-Jan-23 A	20-Apr-23														
A1360	01 57 13 - Tree, Vegetation, and Soil Protection Plan	55	0	19-Jan-23 A	06-Apr-23														
A1370	01 57 13 - Spill Plan	55	0	19-Jan-23 A	06-Apr-23														
A3110	26 24 00 - Panelboards - Prep & Submit	70	0	19-Jan-23 A	27-Apr-23														
A3280	26 50 00 Lighting - Prep & Submit	80	0	19-Jan-23 A	11-May-23														
A3340	05 50 00 - Metal Grating - Prep & Submit PS 62 & 7	80	0	19-Jan-23 A	25-Oct-23	73													
A3480	26 05 00 EV Charging Station	59	0	19-Jan-23 A	13-Apr-23														
A3350	23 00 00 - Ventilation Enclosures - Prep & Submit PS 62 & 63	80	30	30-Jan-23 A	07-Dec-23	140													
A3360	40 05 15 Pipe Supports- Prep & Submit PS62 & PS63	215	26	30-Jan-23 A	01-Dec-23	21													
A1190	Div 26 - Electrical Materials - Prep & Submit	1	0	13-Mar-23 A	13-Mar-23														
A1290	40 23 01 - Pump Station Valves - Prep & Submit	1	0	21-Mar-23 A	21-Mar-23														
A1300	Div 40 - Instrumentation - Prep & Submit	1	0	13-Apr-23 A	13-Apr-23														
A1240	32 31 13/32 31 19 Fencing - Prep & Submit	6	6	19-Jun-23 A	01-Nov-23	50													
A1250	33 05 16 - Utility Structure - Prep & Submit	40	40	19-Jun-23 A	21-Dec-23	168													
A1310	41 22 13 - Cranes & Hoist - Prep & Submit	40	40	19-Jun-23 A	21-Dec-23	101													
A3370	01 75 00 - Commishioning & Startup Plan - Prep & Submit	20	20	25-Oct-23	21-Nov-23	23													
Submittal Review & Approval																			
A1830	Div 26 - Electrical Materials Review & Approved	132	0	13-Mar-23 A	14-Sep-23														
A1930	40 23 01 - Pump Station Valves - Review & Approved	15	0	21-Mar-23 A	01-May-23														
A1920	40 23 00 - Process Pipe, Fittings, & Accessories - Review & Approved	15	0	23-Mar-23 A	12-Apr-23														
A1910	40 05 15 Pipe Supports - Review & Approved PS 63	87	0	30-Mar-23 A	31-Jul-23 A														

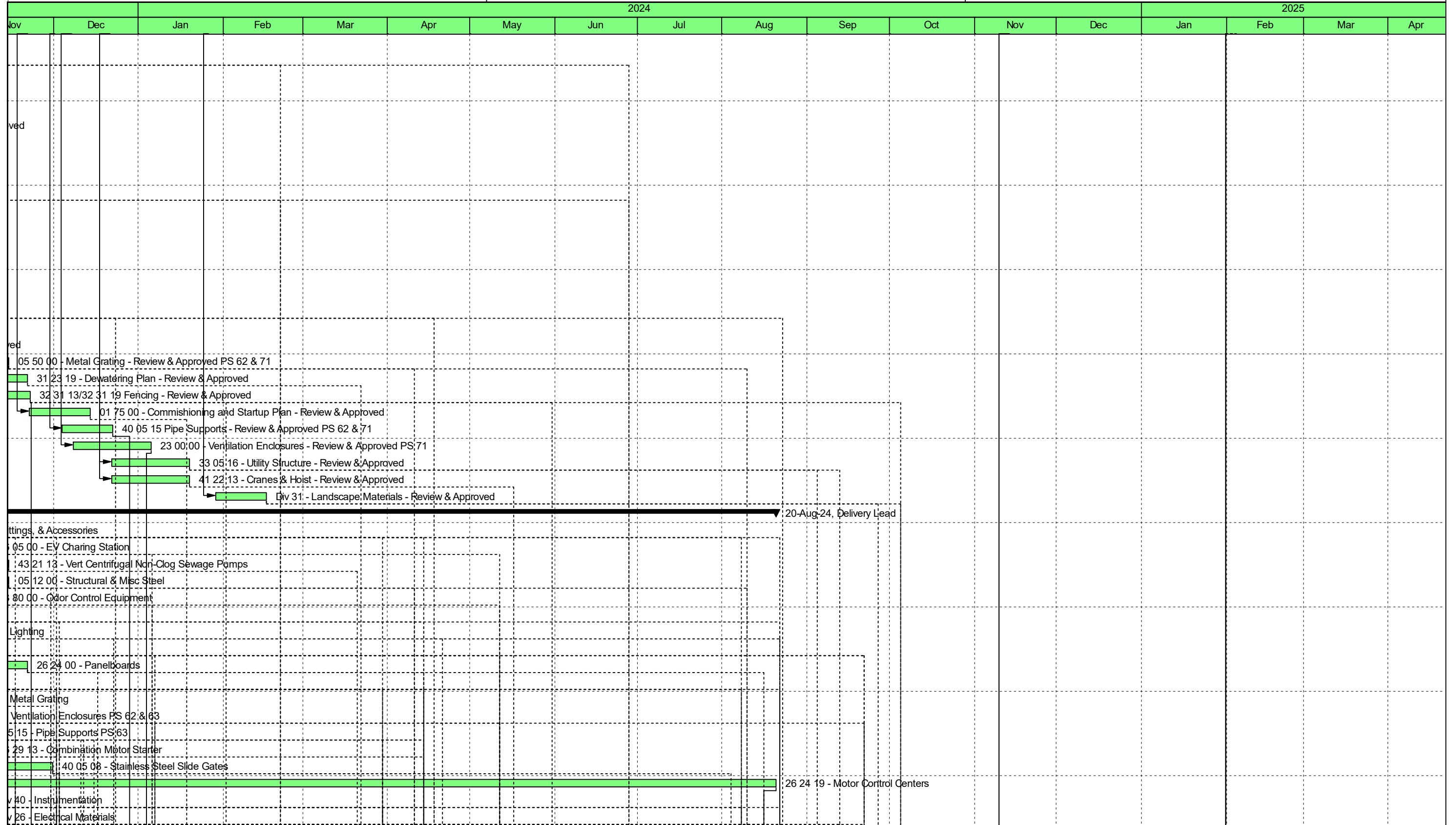
█ Actual Work
 █ Critical Remaining Work
 Summary
█ Remaining Work
 ◆ Milestone



█ Actual Work
 █ Critical Remaining Work
 Summary
 █ Remaining Work
 ◆ Milestone

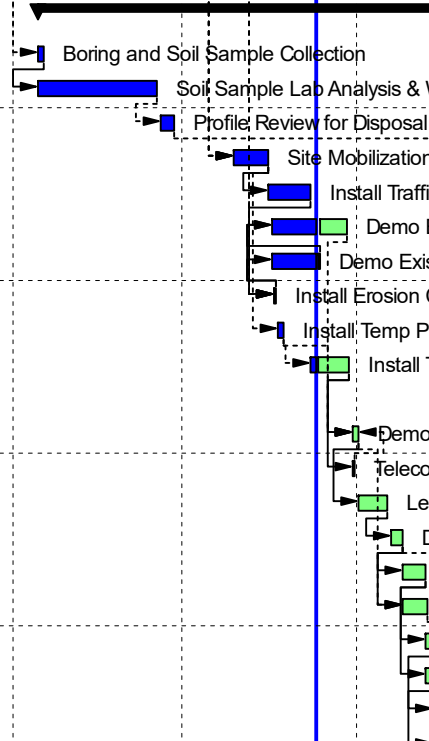
Activity ID	Activity Name	Original Duration	Remaining Duration	Start	Finish	Total Float	2023													
							Feb	Mar	Apr	May	Jun	Jul	Aug	Sep	Oct	Nov				
A1960	43 21 13 - Vert Centrifugal Non-Clog Sewage Pump:	30	0	03-Apr-23 A	03-May-23															
A2000	01 57 13 - Tree, Vegetation, and Soil Protection Plan	8	0	06-Apr-23 A	14-Apr-23															
A2010	01 57 13 - Spill Plan - Review & Approved	24	0	06-Apr-23 A	08-May-23															
A3490	26 05 00 - EV Charing Station - Review & Approved	15	0	12-Apr-23 A	02-May-23															
A1820	23 80 00 - Odor Control Equipment - Review & Approved	18	0	13-Apr-23 A	08-May-23															
A1900	40 05 08 - Stainless Steel Slide Gates - Review & Approved	87	0	13-Apr-23 A	14-Aug-23															
A1940	Div 40 - Instrumentation - Review & Approved	97	0	13-Apr-23 A	28-Aug-23															
A1800	23 00 00 - Ventilation Fans - Review & Approved	36	0	14-Apr-23 A	02-Jun-23															
A1990	00 31 00 - Site Security Plan - Review & Approved	50	0	20-Apr-23 A	28-Jun-23															
A1980	01 57 13 - Construction Stormwater & Erosion Control Plan - Review & Approved	1	0	21-Apr-23 A	21-Apr-23															
A1970	43 21 39 - Sump Pumps - Review & Approved	7	0	24-Apr-23 A	02-May-23															
A3250	26 24 00 - Panelboards - Review & Approved	27	0	27-Apr-23 A	02-Jun-23															
A1770	05 12 00 - Structural & Misc Steel - Review & Approved	4	0	03-May-23 A	08-May-23															
A1850	26 29 13 - Combination Motor Starter - Review & Approved	64	0	04-May-23 A	02-Aug-23															
A1780	05 50 00 - Metal Grating - Review & Approved PS 62 & 63	46	0	08-May-23 A	11-Jul-23 A															
A3270	26 50 00 Lighting - Review & Approved	5	0	11-May-23 A	17-May-23															
A1790	09 90 00 - Painting & Coatings - Review & Approved	32	0	02-Jun-23 A	18-Jul-23 A															
A1810	23 00 00 - Ventilation Enclosures - Review & Approved PS 62 & 63	13	0	14-Jun-23 A	18-Jul-23 A															
A1840	26 24 19 - Motor Control Centers - Review & Approved	44	0	20-Jun-23 A	21-Aug-23															
A3400	05 50 00 - Metal Grating - Review & Approved PS 62 & 63	15	15	25-Oct-23	14-Nov-23	73														
A1860	31 23 19 - Dewatering Plan - Review & Approved	15	15	01-Nov-23	21-Nov-23	86														
A1880	32 31 13/32 31 19 Fencing - Review & Approved	15	15	02-Nov-23	22-Nov-23	50														
A3560	01 75 00 - Commishioning and Startup Plan - Review & Approved	15	15	22-Nov-23	14-Dec-23	23														
A3390	40 05 15 Pipe Supports - Review & Approved PS 62 & 63	15	15	04-Dec-23	22-Dec-23	21														
A3380	23 00 00 - Ventilation Enclosures - Review & Approved	15	15	08-Dec-23	05-Jan-24	140														
A1890	33 05 16 - Utility Structure - Review & Approved	15	15	22-Dec-23	19-Jan-24	168														
A1950	41 22 13 - Cranes & Hoist - Review & Approved	15	15	22-Dec-23	19-Jan-24	101														
A1870	Div 31 - Landscape Materials - Review & Approved	15	15	29-Jan-24	16-Feb-24	182														
Delivery Lead		338	205	13-Apr-23 A	20-Aug-24	45														
A3190	40 23 00 - Process Pipe, Fittings, & Accessories	50	0	13-Apr-23 A	29-Sep-23															
A3510	26 05 00 - EV Charing Station	60	10	02-May-23 A	07-Nov-23	47														
A3210	43 21 13 - Vert Centrifugal Non-Clog Sewage Pump:	140	15	04-May-23 A	14-Nov-23	93														
A3220	05 12 00 - Structural & Misc Steel	50	15	09-May-23 A	14-Nov-23	31														
A3140	23 80 00 - Odor Control Equipment	85	10	09-May-23 A	07-Nov-23	43														
A3470	43 21 39 - Sump Pump Delivery	60	0	09-May-23 A	01-Aug-23															
A3290	26 50 00 - Lighting	45	0	18-May-23 A	25-Oct-23	42														
A3120	23 00 00 - Ventilation Fans	65	0	05-Jun-23 A	22-Sep-23															
A3260	26 24 00 - Panelboards	110	20	05-Jun-23 A	21-Nov-23	21														
A3200	40 23 01 - Pump Station Valves	50	0	10-Jul-23 A	19-Sep-23															
A3230	05 50 00 - Metal Grating	45	0	12-Jul-23 A	25-Oct-23	46														
A3130	23 00 00 - Ventilation Enclosures PS 62 & 63	65	1	19-Jul-23 A	25-Oct-23	54														
A3180	40 05 15 - Pipe Supports PS 63	50	8	01-Aug-23 A	03-Nov-23	15														
A3160	26 29 13 - Combination Motor Starter	50	10	03-Aug-23 A	07-Nov-23	31														
A3170	40 05 08 - Stainless Steel Slide Gates	90	25	15-Aug-23 A	30-Nov-23	32														
A3150	26 24 19 - Motor Control Centers	250	205	22-Aug-23 A	20-Aug-24	25														
A3300	Div 40 - Instrumentation	50	10	29-Aug-23 A	07-Nov-23	13														
A3240	Div 26 - Electrical Materials	30	10	15-Sep-23 A	07-Nov-23	31														

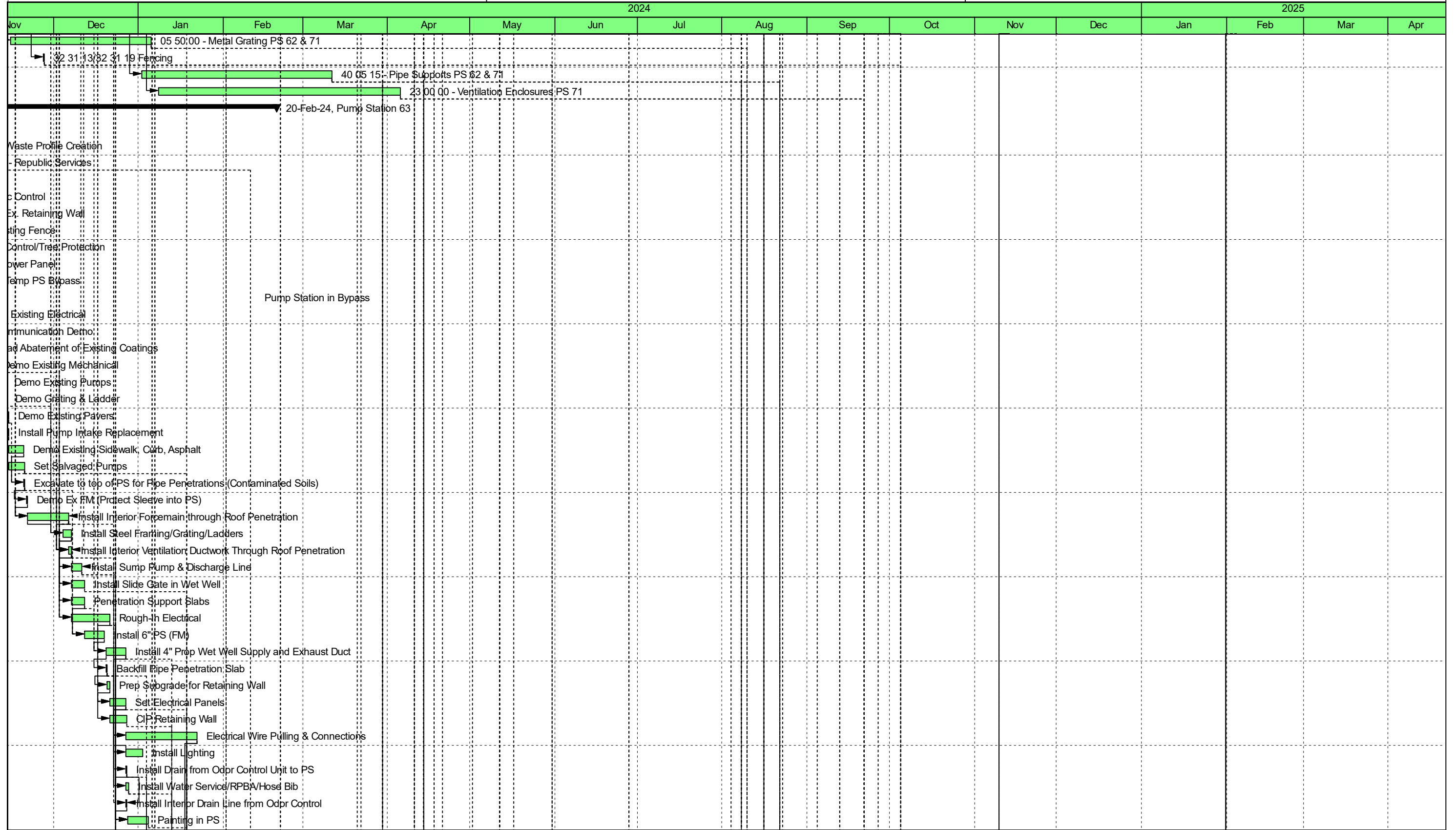
█ Actual Work
 █ Critical Remaining Work
 ▶ Summary
█ Remaining Work
 ◆ Milestone



█ Actual Work
 █ Critical Remaining Work
 ▶ Summary
█ Remaining Work
 ◆ Milestone

Activity ID	Activity Name	Original Duration	Remaining Duration	Start	Finish	Total Float	2023													
							Feb	Mar	Apr	May	Jun	Jul	Aug	Sep	Oct	Nov				
A3570	05 50 00 - Metal Grating PS 62 & 71	30	30	15-Nov-23	05-Jan-24	73														
A3500	32 31 13/32 31 19 Fencing	1	1	27-Nov-23	27-Nov-23	50														
A3420	40 05 15 - Pipe Supports PS 62 & 71	50	50	02-Jan-24	11-Mar-24	21														
A3410	23 00 00 - Ventilation Enclosures PS 71	65	65	08-Jan-24	05-Apr-24	140														
Pump Station 63		113	77	05-Sep-23 A	20-Feb-24	243														
A3440	Boring and Soil Sample Collection	1	0	05-Sep-23 A	06-Sep-23															
A3450	Soil Sample Lab Analysis & Waste Profile Creation	1	0	05-Sep-23 A	26-Sep-23															
A3460	Profile Review for Disposal - Republic Services	2	0	27-Sep-23 A	29-Sep-23															
A2570	Site Mobilization	3	0	10-Oct-23 A	16-Oct-23															
A3100	Install Traffic Control	1	0	16-Oct-23 A	24-Oct-23															
A2590	Demo Ex. Retaining Wall	2	2	17-Oct-23 A	30-Oct-23	4														
A2620	Demo Existing Fence	1	1	17-Oct-23 A	25-Oct-23	-6														
A2580	Install Erosion Control/Tree Protection	1	0	17-Oct-23 A	17-Oct-23															
A2600	Install Temp Power Panel	2	0	18-Oct-23 A	19-Oct-23															
A2610	Install Temp PS Bypass	4	3	24-Oct-23 A	30-Oct-23	3														
A2630	Pump Station in Bypass	56	56	31-Oct-23	12-Feb-24	3														
A2640	Demo Existing Electrical	2	2	31-Oct-23	01-Nov-23	3														
A3520	Telecommunication Demo	1	1	31-Oct-23	31-Oct-23	4														
A2650	Lead Abatement of Existing Coatings	2	2	01-Nov-23	06-Nov-23	3														
A2660	Demo Existing Mechanical	2	2	07-Nov-23	09-Nov-23	3														
A2680	Demo Existing Pumps	1	1	09-Nov-23	13-Nov-23	3														
A2670	Demo Grating & Ladder	2	2	09-Nov-23	13-Nov-23	29														
A2690	Demo Existing Pavers	2	2	13-Nov-23	14-Nov-23	3														
A2700	Install Pump Intake Replacement	2	2	13-Nov-23	14-Nov-23	4														
A2710	Demo Existing Sidewalk, Curb, Asphalt	2	2	14-Nov-23	20-Nov-23	3														
A2720	Set Salvaged Pumps	3	3	14-Nov-23	20-Nov-23	4														
A2750	Excavate to top of PS for Pipe Penetrations (Contan	1	1	20-Nov-23	20-Nov-23	3														
A2730	Demo Ex FM (Protect Sleeve into PS)	1	1	21-Nov-23	21-Nov-23	3														
A2760	Install Interior Forcemain through Roof Penetration	8	8	21-Nov-23	06-Dec-23	3														
A2790	Install Steel Framing/Grating/Ladders	3	3	04-Dec-23	07-Dec-23	19														
A2800	Install Interior Ventilation Ductwork Through Roof Pe	1	1	06-Dec-23	07-Dec-23	3														
A2820	Install Sump Pump & Discharge Line	1	1	07-Dec-23	11-Dec-23	19														
A2830	Install Slide Gate in Wet Well	2	2	07-Dec-23	12-Dec-23	23														
A2840	Penetration Support Slabs	2	2	07-Dec-23	12-Dec-23	4														
A3310	Rough-In Electrical	8	8	07-Dec-23	21-Dec-23	3														
A2770	Install 6" PS (FM)	5	5	12-Dec-23	19-Dec-23	4														
A2870	Install 4" Prop Wet Well Supply and Exhaust Duct	3	3	20-Dec-23	27-Dec-23	4														
A2920	Backfill Pipe Penetration Slab	1	1	20-Dec-23	20-Dec-23	7														
A2860	Prep Subgrade for Retaining Wall	1	1	20-Dec-23	21-Dec-23	13														
A2810	Set Electrical Panels	2	2	21-Dec-23	27-Dec-23	3														
A2960	CIP Retaining Wall	2	2	21-Dec-23	27-Dec-23	13														
A2890	Electrical Wire Pulling & Connections	12	12	27-Dec-23	22-Jan-24	3														
A2880	Install Lighting	2	2	27-Dec-23	02-Jan-24	3														
A2900	Install Drain from Odor Control Unit to PS	1	1	27-Dec-23	27-Dec-23	4														
A2980	Install Water Service/RPBA/Hose Bib	2	2	27-Dec-23	28-Dec-23	8														
A2930	Install Interior Drain Line from Odor Control	1	1	27-Dec-23	27-Dec-23	10														
A2850	Painting in PS	4	4	28-Dec-23	04-Jan-24	10														

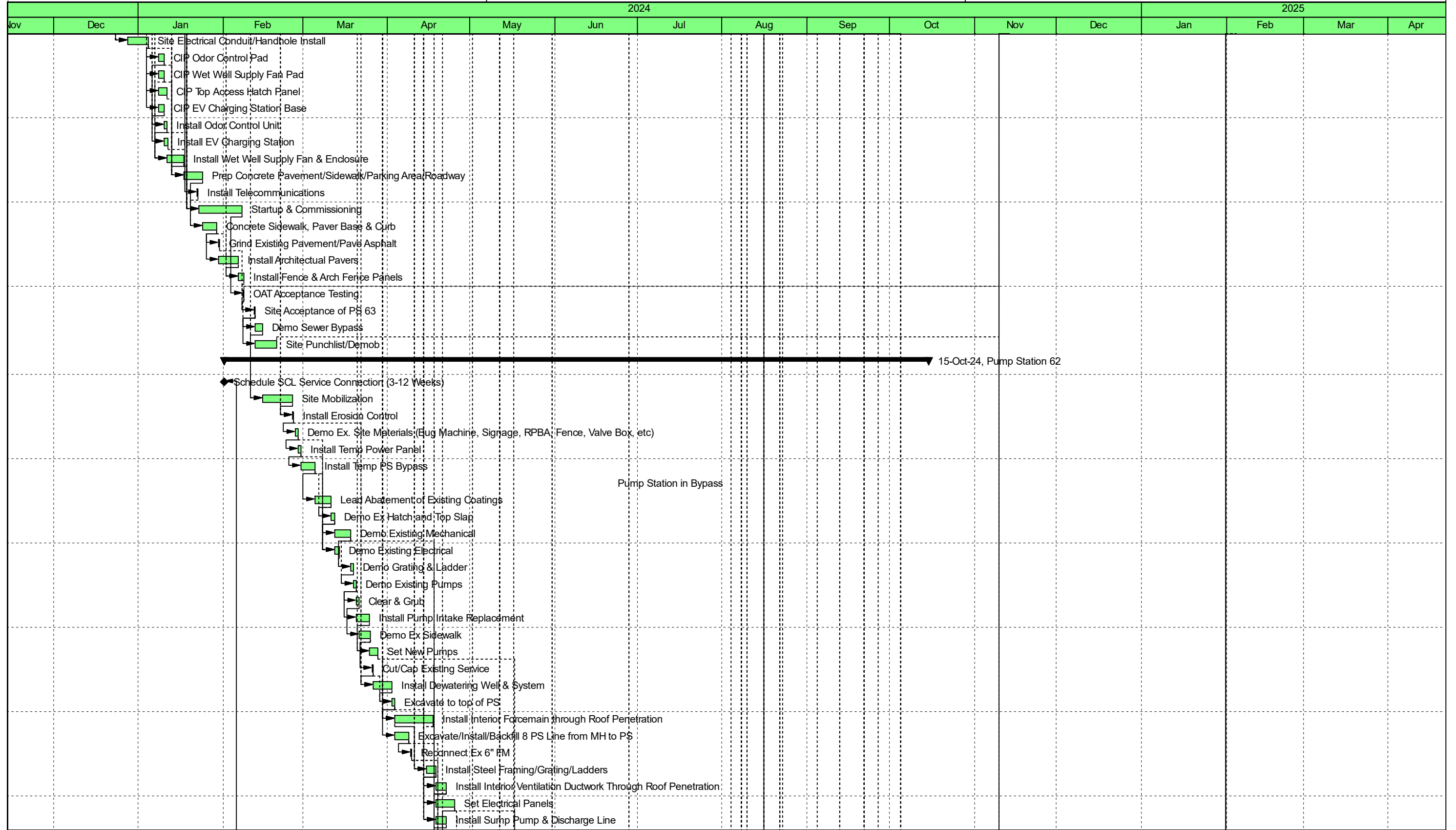




█ Actual Work
 █ Critical Remaining Work
 ▶ Summary
█ Remaining Work
 ◆ Milestone

Activity ID	Activity Name	Original Duration	Remaining Duration	Start	Finish	Total Float	2023											
							Feb	Mar	Apr	May	Jun	Jul	Aug	Sep	Oct	Nov		
A2910	Site Electrical Conduit/Handhole Install	4	4	28-Dec-23	04-Jan-24	4												
A2940	CIP Odor Control Pad	2	2	08-Jan-24	10-Jan-24	4												
A2950	CIP Wet Well Supply Fan Pad	2	2	08-Jan-24	10-Jan-24	5												
A2970	CIP Top Access Hatch Panel	3	3	08-Jan-24	11-Jan-24	6												
A3010	CIP EV Charging Station Base	2	2	08-Jan-24	10-Jan-24	6												
A2990	Install Odor Control Unit	1	1	10-Jan-24	11-Jan-24	4												
A3020	Install EV Charging Station	2	2	10-Jan-24	11-Jan-24	6												
A3000	Install Wet Well Supply Fan & Enclosure	2	2	11-Jan-24	17-Jan-24	4												
A3030	Prep Concrete Pavement/Sidewalk/Parking Area/Ro:	4	4	17-Jan-24	24-Jan-24	4												
A3530	Install Telecommunications	1	1	22-Jan-24	22-Jan-24	5												
A3070	Startup & Commissioning	8	8	23-Jan-24	07-Feb-24	2												
A3040	Concrete Sidewalk, Paver Base & Curb	2	2	24-Jan-24	29-Jan-24	4												
A3320	Grind Existing Pavement/Pave Asphalt	1	1	30-Jan-24	30-Jan-24	9												
A3060	Install Architectural Pavers	5	5	30-Jan-24	06-Feb-24	4												
A3050	Install Fence & Arch Fence Panels	2	2	06-Feb-24	08-Feb-24	4												
A3610	OAT Acceptance Testing	1	1	08-Feb-24	08-Feb-24	6												
A3080	Site Acceptance of PS 63	1	1	12-Feb-24	12-Feb-24	3												
A3090	Demo Sewer Bypass	2	2	12-Feb-24	15-Feb-24	3												
A3330	Site Punchlist/Demob	4	4	12-Feb-24	20-Feb-24	190												
Pump Station 62		180	180	01-Feb-24	15-Oct-24	78												
A3650	Schedule SCL Service Connection (3-12 Weeks)	0	0	01-Feb-24		201												
A2030	Site Mobilization	4	4	15-Feb-24	26-Feb-24	3												
A2040	Install Erosion Control	1	1	26-Feb-24	26-Feb-24	3												
A2070	Demo Ex. Site Materials (Bug Machine, Signage, RF	2	2	27-Feb-24	28-Feb-24	3												
A2090	Install Temp Power Panel	1	1	28-Feb-24	29-Feb-24	3												
A2130	Install Temp PS Bypass	2	2	29-Feb-24	05-Mar-24	3												
A2150	Pump Station in Bypass	60	60	05-Mar-24	20-Jun-24	5												
A2170	Lead Abatement of Existing Coatings	2	2	05-Mar-24	11-Mar-24	3												
A2080	Demo Ex Hatch and Top Slap	2	2	11-Mar-24	12-Mar-24	3												
A2180	Demo Existing Mechanical	2	2	12-Mar-24	18-Mar-24	3												
A2160	Demo Existing Electrical	2	2	12-Mar-24	14-Mar-24	4												
A2190	Demo Grating & Ladder	2	2	18-Mar-24	19-Mar-24	3												
A2200	Demo Existing Pumps	1	1	19-Mar-24	20-Mar-24	3												
A2050	Clear & Grub	1	1	20-Mar-24	21-Mar-24	3												
A2210	Install Pump Intake Replacement	2	2	20-Mar-24	25-Mar-24	6												
A2060	Demo Ex Sidewalk	2	2	21-Mar-24	25-Mar-24	3												
A2220	Set New Pumps	3	3	25-Mar-24	28-Mar-24	6												
A2110	Cut/Cap Existing Service	1	1	26-Mar-24	26-Mar-24	3												
A2100	Install Dewatering Well & System	4	4	26-Mar-24	02-Apr-24	3												
A2140	Excavate to top of PS	1	1	02-Apr-24	03-Apr-24	3												
A2240	Install Interior Forcemain through Roof Penetration	8	8	03-Apr-24	17-Apr-24	3												
A2320	Excavate/Install/Backfill 8 PS Line from MH to PS	2	2	03-Apr-24	08-Apr-24	10												
A2330	Reconnect Ex 6" FM	1	1	09-Apr-24	09-Apr-24	10												
A2250	Install Steel Framing/Grating/Ladders	3	3	15-Apr-24	18-Apr-24	3												
A2270	Install Interior Ventilation Ductwork Through Roof Pe	1	1	18-Apr-24	22-Apr-24	3												
A2260	Set Electrical Panels	4	4	18-Apr-24	25-Apr-24	3												
A2280	Install Sump Pump & Discharge Line	1	1	18-Apr-24	22-Apr-24	17												

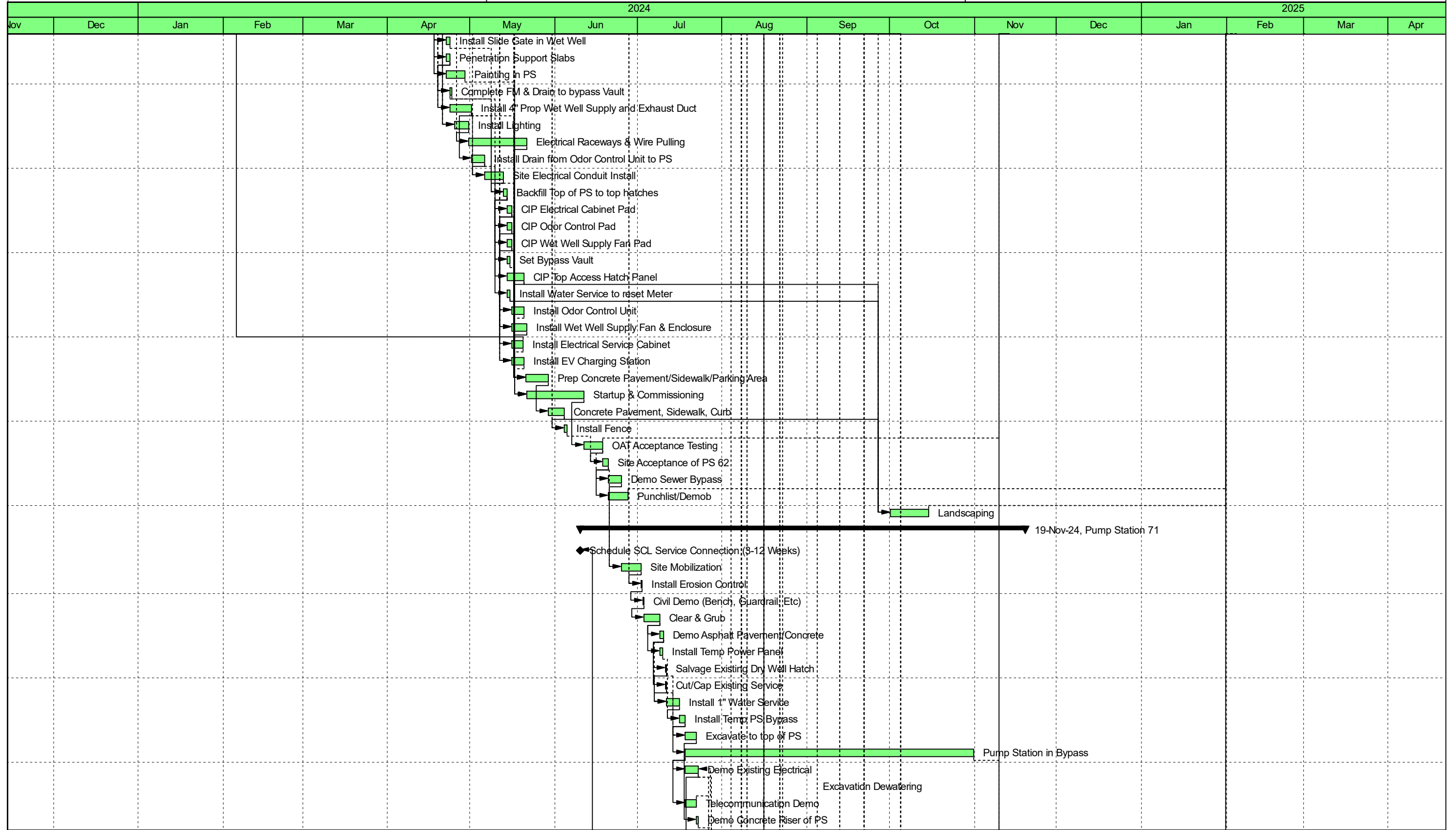
█ Actual Work
 █ Critical Remaining Work
 ▼ Summary
█ Remaining Work
 ◆ Milestone



█ Actual Work
 █ Critical Remaining Work
 █ Remaining Work
 ◆ Milestone
 ▶ Summary

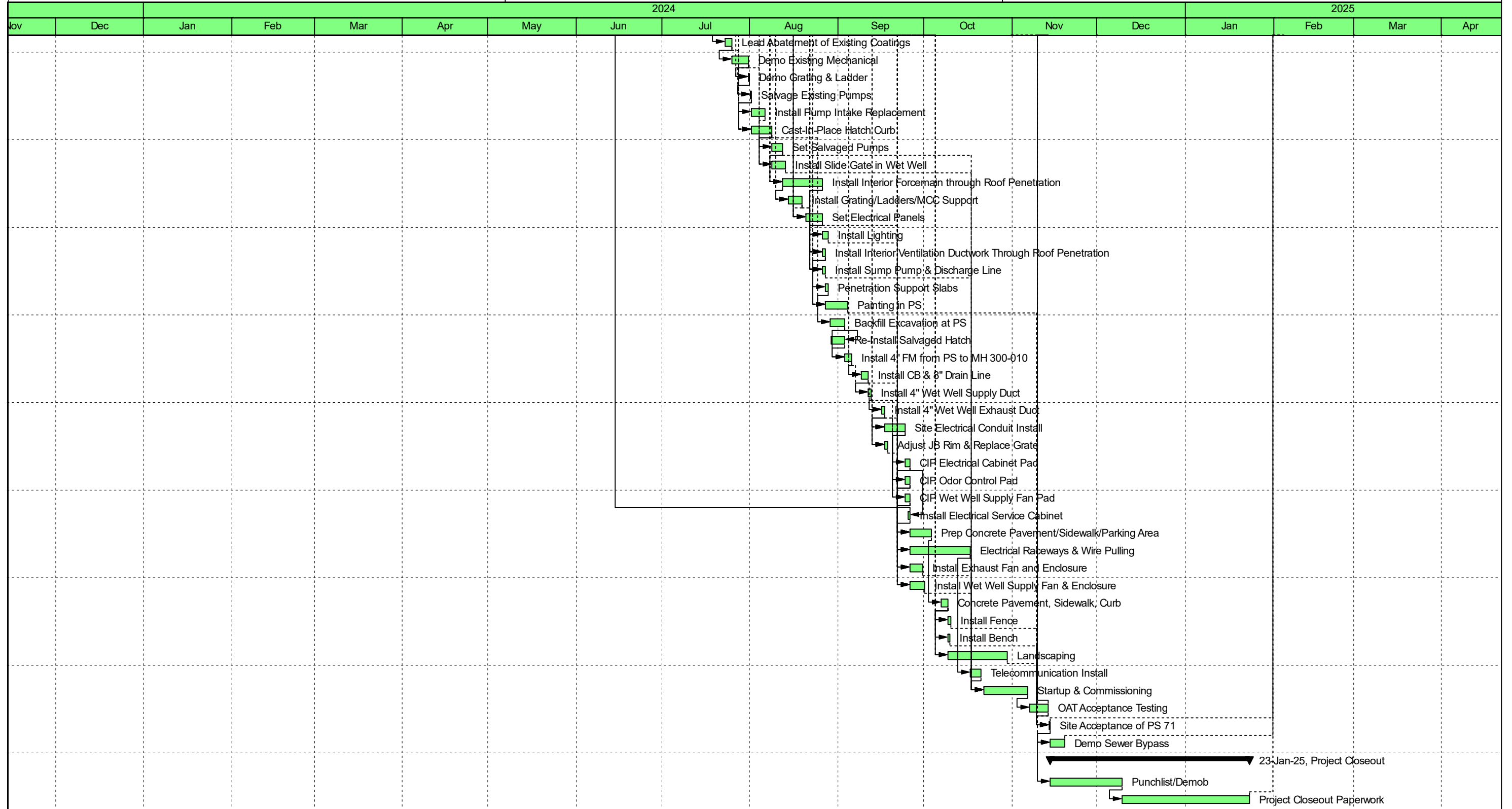
Activity ID	Activity Name	Original Duration	Remaining Duration	Start	Finish	Total Float	2023													
							Jan	Feb	Mar	Apr	May	Jun	Jul	Aug	Sep	Oct	Nov			
A2230	Install Slide Gate in Wet Well	2	2	22-Apr-24	23-Apr-24	14														
A2290	Penetration Support Slabs	2	2	22-Apr-24	23-Apr-24	3														
A2300	Painting in PS	4	4	22-Apr-24	29-Apr-24	17														
A2350	Complete FM & Drain to bypass Vault	1	1	23-Apr-24	24-Apr-24	14														
A2360	Install 4" Prop Wet Well Supply and Exhaust Duct	5	5	23-Apr-24	01-May-24	3														
A2340	Install Lighting	2	2	25-Apr-24	30-Apr-24	3														
A2310	Electrical Raceways & Wire Pulling	12	12	30-Apr-24	21-May-24	3														
A2550	Install Drain from Odor Control Unit to PS	2	2	01-May-24	06-May-24	3														
A2370	Site Electrical Conduit Install	4	4	06-May-24	13-May-24	3														
A2520	Backfill Top of PS to top hatches	2	2	13-May-24	14-May-24	3														
A2380	CIP Electrical Cabinet Pad	2	2	14-May-24	16-May-24	4														
A2390	CIP Odor Control Pad	2	2	14-May-24	16-May-24	4														
A2400	CIP Wet Well Supply Fan Pad	2	2	14-May-24	16-May-24	3														
A2530	Set Bypass Vault	1	1	14-May-24	15-May-24	14														
A2540	CIP Top Access Hatch Panel	3	3	14-May-24	20-May-24	12														
A2560	Install Water Service to reset Meter	1	1	14-May-24	15-May-24	14														
A2410	Install Odor Control Unit	2	2	16-May-24	20-May-24	4														
A2420	Install Wet Well Supply Fan & Enclosure	2	2	16-May-24	21-May-24	3														
A2440	Install Electrical Service Cabinet	1	1	16-May-24	20-May-24	5														
A2510	Install EV Charging Station	2	2	16-May-24	20-May-24	4														
A2430	Prep Concrete Pavement/Sidewalk/Parking Area	5	5	21-May-24	29-May-24	12														
A2480	Startup & Commissioning	8	8	21-May-24	11-Jun-24	2														
A2450	Concrete Pavement, Sidewalk, Curb	2	2	29-May-24	04-Jun-24	12														
A2460	Install Fence	2	2	04-Jun-24	05-Jun-24	12														
A3620	OAT Acceptance Testing	7	7	11-Jun-24	18-Jun-24	9														
A2490	Site Acceptance of PS 62	1	1	18-Jun-24	20-Jun-24	5														
A2500	Demo Sewer Bypass	2	2	20-Jun-24	25-Jun-24	5														
A2740	Punchlist/Demob	4	4	20-Jun-24	27-Jun-24	119														
A2470	Landscaping	8	8	01-Oct-24	15-Oct-24	60														
Pump Station 71		114	114	10-Jun-24	19-Nov-24	53														
A3640	Schedule SCL Service Connection (3-12 Weeks)	0	0	10-Jun-24		130														
A1000	Site Mobilization	4	4	25-Jun-24	02-Jul-24	5														
A1010	Install Erosion Control	1	1	02-Jul-24	02-Jul-24	5														
A1450	Civil Demo (Bench, Guardrail, Etc)	1	1	03-Jul-24	03-Jul-24	5														
A1020	Clear & Grub	2	2	03-Jul-24	09-Jul-24	5														
A1030	Demo Asphalt Pavement/Concrete	2	2	09-Jul-24	10-Jul-24	5														
A1060	Install Temp Power Panel	1	1	09-Jul-24	10-Jul-24	8														
A1120	Salvage Existing Dry Well Hatch	1	1	11-Jul-24	11-Jul-24	5														
A1460	Cut/Cap Existing Service	1	1	11-Jul-24	11-Jul-24	5														
A1530	Install 1" Water Service	2	2	11-Jul-24	16-Jul-24	5														
A1070	Install Temp PS Bypass	2	2	16-Jul-24	18-Jul-24	5														
A1040	Excavate to top of PS	1	1	18-Jul-24	22-Jul-24	11														
A1080	Pump Station in Bypass	59	59	18-Jul-24	31-Oct-24	5														
A1100	Demo Existing Electrical	2	2	18-Jul-24	23-Jul-24	5														
A3660	Excavation Dewatering	25	25	18-Jul-24	03-Sep-24	5														
A3540	Telecommunication Demo	1	1	18-Jul-24	22-Jul-24	6														
A1050	Demo Concrete Riser of PS	1	1	22-Jul-24	23-Jul-24	11														

█ Actual Work
 █ Critical Remaining Work
 Summary
█ Remaining Work
 ◆ Milestone



█ Actual Work
 █ Critical Remaining Work
 ▶ Summary
█ Remaining Work
 ◆ Milestone

Activity ID	Activity Name	Original Duration	Remaining Duration	Start	Finish	Total Float	2023														
							Jan	Feb	Mar	Apr	May	Jun	Jul	Aug	Sep	Oct	Nov				
A1380	Lead Abatement of Existing Coatings	2	2	23-Jul-24	25-Jul-24	5															
A1090	Demo Existing Mechanical	2	2	25-Jul-24	31-Jul-24	5															
A1390	Demo Grating & Ladder	1	1	31-Jul-24	31-Jul-24	5															
A1110	Salvage Existing Pumps	1	1	01-Aug-24	01-Aug-24	5															
A1440	Install Pump Intake Replacement	2	2	01-Aug-24	06-Aug-24	7															
A1510	Cast-In-Place Hatch Curb	4	4	01-Aug-24	08-Aug-24	5															
A1400	Set Salvaged Pumps	1	1	08-Aug-24	12-Aug-24	5															
A1490	Install Slide Gate in Wet Well	2	2	08-Aug-24	13-Aug-24	43															
A1410	Install Interior Forcemain through Roof Penetration	8	8	12-Aug-24	26-Aug-24	5															
A1430	Install Grating/Ladders/MCC Support	2	2	14-Aug-24	19-Aug-24	9															
A1470	Set Electrical Panels	2	2	20-Aug-24	26-Aug-24	20															
A2120	Install Lighting	2	2	26-Aug-24	28-Aug-24	20															
A1420	Install Interior Ventilation Ductwork Through Roof Pe	1	1	26-Aug-24	27-Aug-24	5															
A1480	Install Sump Pump & Discharge Line	1	1	26-Aug-24	27-Aug-24	35															
A1500	Penetration Support Slabs	2	2	27-Aug-24	28-Aug-24	5															
A1740	Painting in PS	4	4	27-Aug-24	04-Sep-24	46															
A1520	Backfill Excavation at PS	2	2	29-Aug-24	03-Sep-24	5															
A1570	Re-Install Salvaged Hatch	1	1	29-Aug-24	03-Sep-24	5															
A1540	Install 4" FM from PS to MH 300-010	2	2	03-Sep-24	05-Sep-24	5															
A1620	Install CB & 8" Drain Line	2	2	09-Sep-24	11-Sep-24	5															
A1550	Install 4" Wet Well Supply Duct	2	2	11-Sep-24	12-Sep-24	5															
A1560	Install 4" Wet Well Exhaust Duct	2	2	16-Sep-24	17-Sep-24	5															
A1590	Site Electrical Conduit Install	4	4	17-Sep-24	24-Sep-24	5															
A1630	Adjust JB Rim & Replace Grate	1	1	17-Sep-24	18-Sep-24	18															
A1580	CIP Electrical Cabinet Pad	2	2	24-Sep-24	26-Sep-24	5															
A1600	CIP Odor Control Pad	2	2	24-Sep-24	26-Sep-24	14															
A1610	CIP Wet Well Supply Fan Pad	2	2	24-Sep-24	26-Sep-24	14															
A1710	Install Electrical Service Cabinet	1	1	25-Sep-24	26-Sep-24	5															
A1640	Prep Concrete Pavement/Sidewalk/Parking Area	5	5	26-Sep-24	03-Oct-24	14															
A1690	Electrical Raceways & Wire Pulling	12	12	26-Sep-24	17-Oct-24	5															
A1720	Install Exhaust Fan and Enclosure	2	2	26-Sep-24	30-Sep-24	16															
A1730	Install Wet Well Supply Fan & Enclosure	2	2	26-Sep-24	01-Oct-24	15															
A1680	Concrete Pavement, Sidewalk, Curb	2	2	07-Oct-24	09-Oct-24	14															
A1650	Install Fence	2	2	09-Oct-24	10-Oct-24	24															
A1660	Install Bench	1	1	09-Oct-24	10-Oct-24	25															
A1670	Landscaping	12	12	09-Oct-24	30-Oct-24	14															
A3670	Telecommunication Install	1	1	17-Oct-24	21-Oct-24	5															
A1700	Startup & Commissioning	8	8	22-Oct-24	06-Nov-24	3															
A3630	OAT Acceptance Testing	7	7	07-Nov-24	13-Nov-24	12															
A1760	Site Acceptance of PS 71	1	1	14-Nov-24	14-Nov-24	6															
A1750	Demo Sewer Bypass	2	2	14-Nov-24	19-Nov-24	41															
Project Closeout		36	36	14-Nov-24	23-Jan-25	6															
A3580	Punchlist/Demob	12	12	14-Nov-24	09-Dec-24	6															
A3600	Project Closeout Paperwork	24	24	09-Dec-24	23-Jan-25	6															



█ Actual Work
 █ Critical Remaining Work
 Summary
█ Remaining Work
 ◆ Milestone