



ADDENDUM NO. 3

TO: All Planholders
FROM: Jane Vail, PE
DATE: March 18, 2022
RE: City of Stevenson
Wastewater Treatment Plant Improvements – Phase I
WE Job No. 1477E

Notice is hereby given to prospective bidders that the Contract Documents have been amended as follows:

ITEM 1:

VOLUME I – CONTRACT DOCUMENTS & TECHNICAL SPECIFICATIONS, ADVERTISEMENT FOR BIDS – replace the bid date and Bid Bond language with the following:

The bid date is changed to **Wednesday, April 13, 2022 at 2:00PM.**

- A. A Bid Bond for this project shall be submitted in a sealed envelope, either in person or mailed to the Stevenson City Hall, 7121 E. Loop Road, Stevenson, WA 98648. Mailed bid bonds will be accepted **until April 11, 2022**. The sealed envelope must reference the project.

ITEM 2:

WASTEWATER TREATMENT PLANT IMPROVEMENTS – PHASE I PLANS

Replace Sheets SC4, SC5, with the attached revised sheets.

Sheet SC4 (20 of 177)

- Changed Demolition Note 1 to describe pipe abandonment.

Sheet SC5 (20 of 177)

- Changed Demolition Note 1 to describe pipe abandonment.

ITEM 3:

A pre-bid meeting took place at the WWTP site on March 16th at 10 am. During this meeting, a test pit excavation was completed within the footprint of the proposed aeration basin to the depth of subgrade. The pre-bid meeting sign-in sheet and a video of the excavation are attached.

ITEM 4:

BIDDER QUESTIONS:

Q15. I did not see a goal for utilizing DBE/MBE/WBE firms for this project. Is there a goal and is it a voluntary or mandatory goal?

A. DBE requirements are stated in SECTION 00 21 00 CCWF Specifications Insert. There is not a mandatory goal issued.

Q16. If we are turning in our bid via electronically, can we upload the documents that are due within 1 hour or will those need to be hand delivered?

A. The City will accept emailed copies of the documents required within 1-hour of Bid Opening, this email should be sent to Leana@ci.stevenson.wa.us and Erin.Kingsley@Walliseng.net with the Delivery and Read Receipt options enabled. The City will not be responsible for technical issues delaying receipt of emails.

Q17. Please specify how pipe is to be abandoned in place.

A. Fill completely with CDF and cap pipe. See Addendum 3, Item 2.

Q18. On Sheet SC12 the dual ML lines running next to the aeration basin are called out as being 14", but on Sheet AP6 they are called out as 18". Please clarify what size the ML line in this area is.

A. The ML in this location is 18".

Q19. What wall thickness should 1" PE-Gas be?

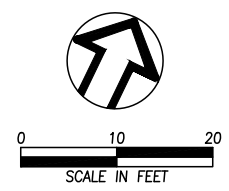
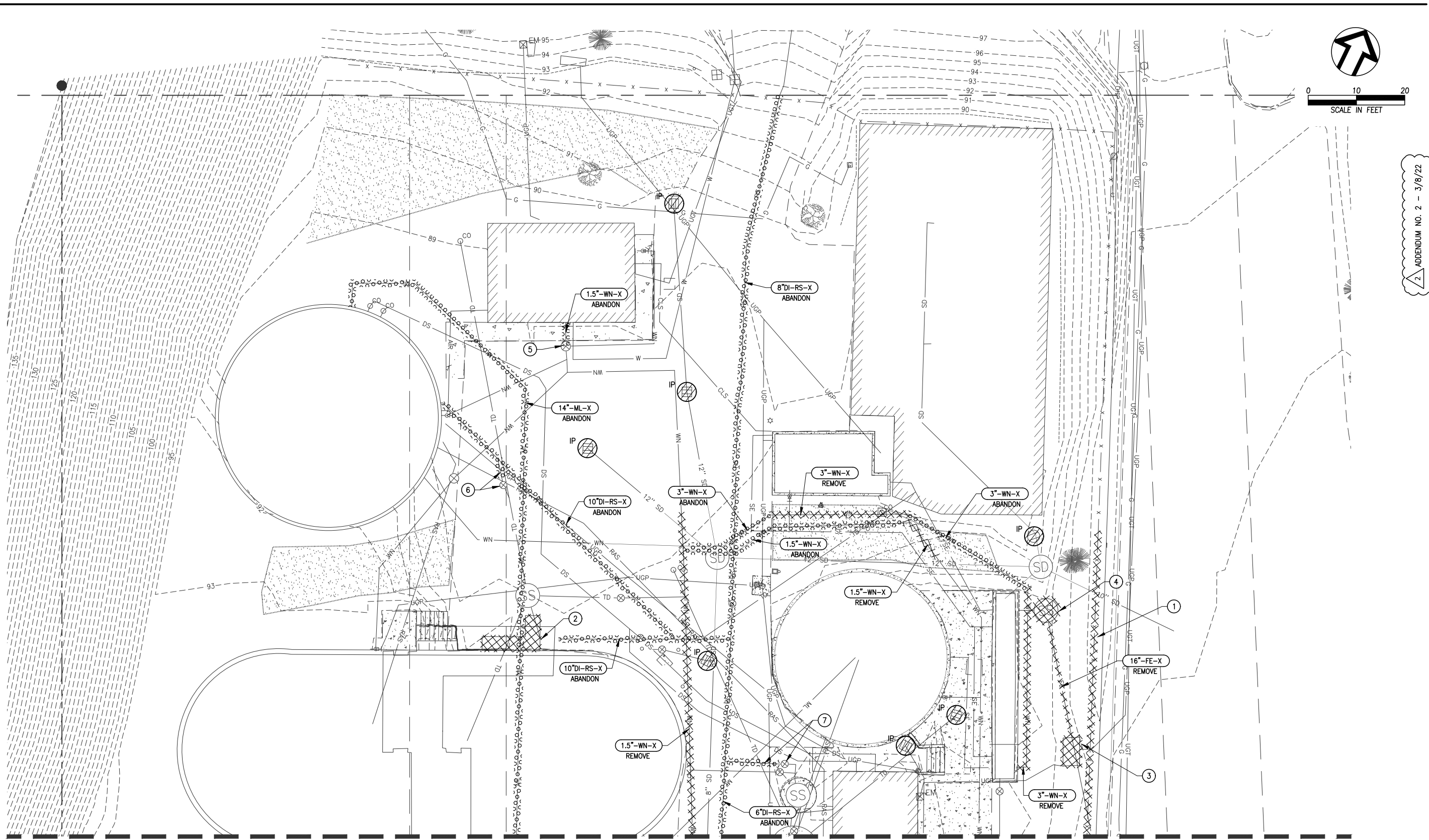
A. SDR 11

A copy of this addendum is available for download at www.wallisengplanroom.net

All bidders shall acknowledge receipt of this addendum by completing Article 3.01 BIDDER'S REPRESENTATIONS in the Bid Form for Construction.

"For more information regarding this project, contact **Erin Kingsley** (Wallis Engineering) at (360) 695-7041."

P:\Admin-Office\Construction Management\Shared Folders\Construction Folders\1477E 700 Construction WWTP\702 Contract Award\702.1 Bidding\WWTP Bidding\Addendum 3 -\1477E Addendum No 3.docx



Designer:
wallis engineering
 2217 N. 34th St., Suite 100
 Bellevue, WA 98005
 360.695.7041

Project Engineer:
wallis engineering
 2217 N. 34th St., Suite 100
 Bellevue, WA 98005
 360.695.7041

PROJECT NO: 1477A

REUSE OF DOCUMENTS: This drawing, and the information herein, are the property of the Architect or Engineer of Record as an instrument of service, and are not to be used, copied, or reproduced in whole or in part, for any other project, without the written consent of the Architect or Engineer of Record.



SITE DEMOLITION & EROSION CONTROL PLAN NORTH
 Wastewater Treatment Plant Improvements - Phase 1
 City of Stevenson, WA

Revisions
 Drawing Status: Final
 Released for Bidding
 Release Date: 1/1/2022
 Drawing: SC4
 Sheet 20 of 177

DEMOLITION NOTES

1. THE LIMITS OF PIPE REMOVAL SHOWN IS SCHEMATIC ONLY. REMOVE PIPING AS REQUIRED FOR CONSTRUCTION OF PROPOSED FACILITIES. PIPE SHOWN FOR REMOVAL THAT DOES NOT INTERFERE WITH NEW STRUCTURES OR PIPING SHALL BE ABANDONED IN PLACE BY FILLING COMPLETELY WITH CDF AND CAPPING.
2. DEMOLITION SHALL INCLUDE ALL WORK NECESSARY TO PREPARE THE SITE FOR CONSTRUCTION OF PROPOSED FACILITIES, INCLUDING ITEMS NOT SHOWN ON THESE PLANS. CONTRACTOR SHALL MAKE SITE VISITS, REVIEW EXISTING DRAWINGS, AND ANY OTHER PREPARATIONS NECESSARY TO DETERMINE EXISTING CONDITIONS.
3. SEE SPECIFICATIONS FOR DEMOLITION SCHEDULING CONSTRAINTS.
4. ALL WASTE MATERIAL SHALL BE DISPOSED OF OFFSITE IN ACCORDANCE WITH FEDERAL, STATE, AND LOCAL REGULATIONS.

EROSION CONTROL NOTES & LEGEND

- IP INLET SEDIMENT FILTER
- NOTE:
 1. SEE SHEET GC1 FOR EROSION CONTROL NOTES & DETAILS.

DEMOLITION LEGEND

- STRUCTURE, EQUIPMENT, OR PIPE TO BE DEMOLISHED OR REMOVED
- STRUCTURE OR PIPE TO BE ABANDONED IN PLACE

MATCHLINE ~ SEE SHEET SC5 FOR CONTINUATION

DEMOLITION KEY NOTES

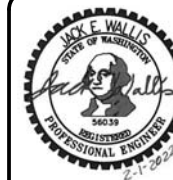
- 1 REMOVE FENCE
- 2 REMOVE EXISTING HEADWORKS SCREEN EQUIPMENT
- 3 REMOVE EXISTING ELECTRICAL TRANSFORMER
- 4 REMOVE EXISTING FE MANHOLE
- 5 ABANDON EXISTING WN PIPING FROM BUILDING AND COMPLETELY DISCONNECT WN PIPING SYSTEM FROM CITY WATER SERVICE. EXISTING PIPING SHOWN IN THIS LOCATION IS SCHEMATIC, FIELD CONDITIONS MAY DIFFER. POTHOLE AND COORDINATE WITH ENGINEER AND OWNER TO DETERMINE THE ACTUAL CONFIGURATION.
- 6 ABANDON TANK DRAIN LINE AND VALVE BETWEEN EXISTING RAW SEWAGE BYPASS AND EXISTING TANK DRAIN. CLOSE VALVE, CUT OPERATING NUT, AND REMOVE VALVE CAN AND COVER.
- 7 ABANDON PLANT DRAIN DISCHARGE PIPING CONNECTION TO EXISTING RS FORCE MAIN. CLOSE VALVE, CUT OPERATING NUT, AND REMOVE VALVE CAN AND COVER. EXISTING PIPING SHOWN IN THIS LOCATION IS SCHEMATIC, FIELD CONDITIONS MAY DIFFER. POTHOLE AND COORDINATE WITH ENGINEER AND OWNER TO DETERMINE THE ACTUAL CONFIGURATION.

ONE INCH
 0" 1"
 ONE INCH AT FULL SCALE.
 IF NOT ONE INCH ADJUST
 SCALE ACCORDINGLY

MATCHLINE ~ SEE SHEET SC4 FOR CONTINUATION



0 10 20
SCALE IN FEET



2 ADDENDUM NO. 2 - 3/8/22

Designer:
wallis engineering
2230 N. 4th Street
Seattle, WA 98107
360.835.7041

Project Engineer:
wallis engineering
2230 N. 4th Street
Seattle, WA 98107
360.835.7041

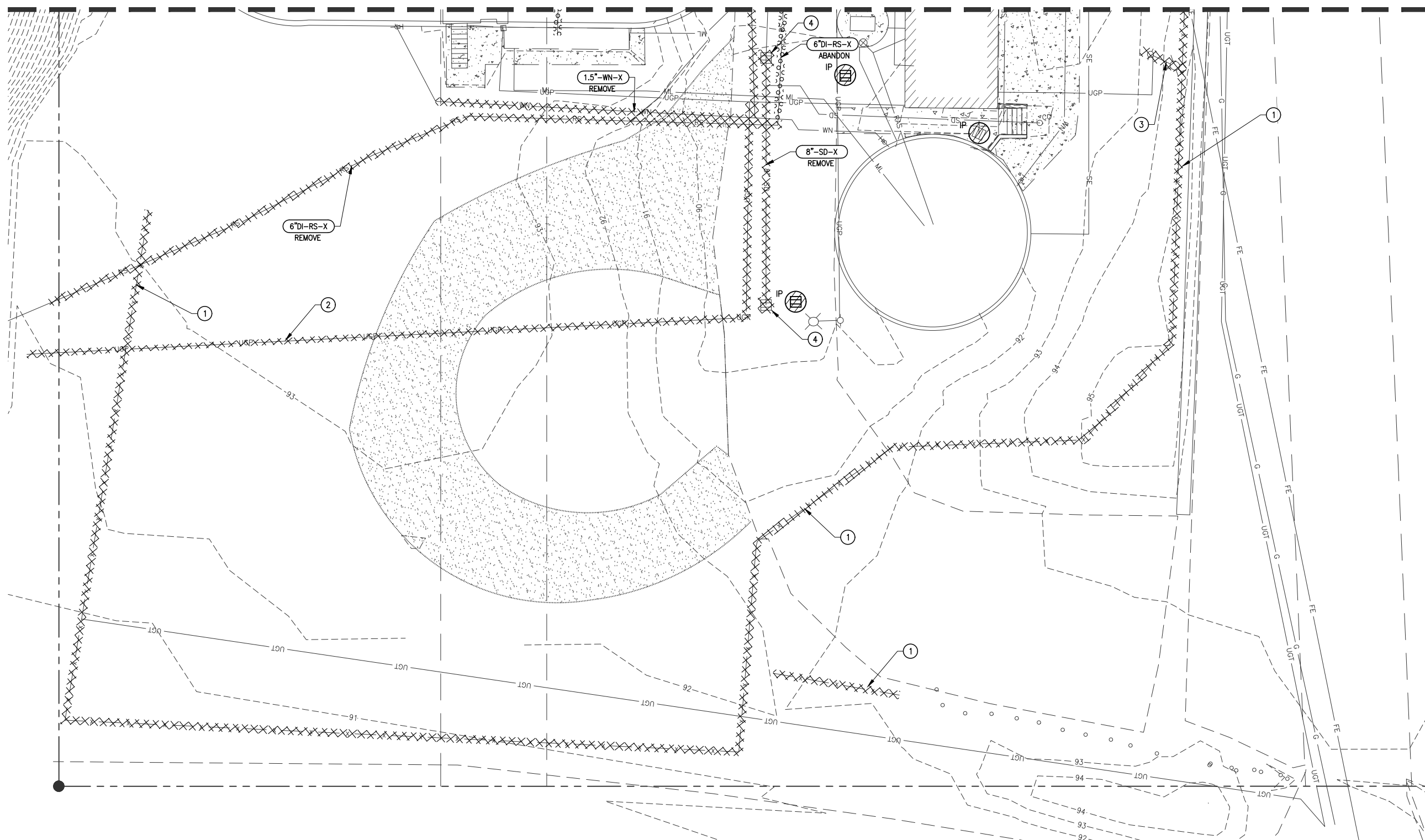
PROJECT NO: 1477A

REUSE OF DOCUMENTS
This drawing and all documents herein, are the property of the Architect or Engineer of Record and shall not be used for any other project without the written consent of the Architect or Engineer of Record.



SITE DEMOLITION & EROSION CONTROL PLAN SOUTH
Wastewater Treatment Plant Improvements - Phase 1
City of Stevenson, WA

Revisions
Drawing Status Final
Released for Bidding
Release Date 1/1/2022
Drawing SC5
Sheet 21 of 177



DEMOLITION NOTES

1. THE LIMITS OF PIPE REMOVAL SHOWN IS SCHEMATIC ONLY. REMOVE PIPING AS REQUIRED FOR CONSTRUCTION OF PROPOSED FACILITIES. PIPE SHOWN FOR REMOVAL THAT DOES NOT INTERFERE WITH NEW STRUCTURES OR PIPING SHALL BE ABANDONED IN PLACE BY FILLING COMPLETELY WITH CDF AND CAPPING.
2. DEMOLITION SHALL INCLUDE ALL WORK NECESSARY TO PREPARE THE SITE FOR CONSTRUCTION OF PROPOSED FACILITIES, INCLUDING ITEMS NOT SHOWN ON THESE PLANS. CONTRACTOR SHALL MAKE SITE VISITS, REVIEW EXISTING DRAWINGS, AND ANY OTHER PREPARATIONS NECESSARY TO DETERMINE EXISTING CONDITIONS.
3. SEE SPECIFICATIONS FOR DEMOLITION SCHEDULING CONSTRAINTS.
4. ALL WASTE MATERIAL SHALL BE DISPOSED OF OFFSITE IN ACCORDANCE WITH FEDERAL, STATE, AND LOCAL REGULATIONS.

DEMOLITION KEY NOTES

- 1 REMOVE FENCE
- 2 REMOVE EXISTING UNDERGROUND POWER
- 3 REMOVE POLE MOUNTED YARD LIGHT
- 4 REMOVE CATCH BASIN

DEMOLITION LEGEND

- XXXXXX STRUCTURE, EQUIPMENT, OR PIPE TO BE DEMOLISHED OR REMOVED
- OOOOOO STRUCTURE OR PIPE TO BE ABANDONED IN PLACE

EROSION CONTROL NOTES & LEGEND

- IP INLET SEDIMENT FILTER

NOTE:
1. SEE SHEET GC1 FOR EROSION CONTROL NOTES & DETAILS.

ONE INCH
0 1 1"
ONE INCH AT FULL SCALE.
IF NOT ONE INCH ADJUST
SCALE ACCORDINGLY



Pre-Bid Meeting Sign in Sheet
City of Stevenson – WWTP Improvements
10:00 AM Wednesday, March 16, 2022

wallis
*engineering

<u>Name</u>	<u>Business Name</u>	<u>Phone #</u>	<u>Email</u>
Gordon Lee	James W. Fowler	(503) 730-4101	gordonl @ jwfowler.com
J-P Holstrom	Holstrom Industrial	503 706 1520	Jan-Philip @ Holstrom.com
Josh Johnson	Strider Construction	360-380-1234	Bids@striderconstruction.com
Ed Hagerman	Stellar J Corp	360.225.7996	Bids @ StellarJ.com
Dave Sherman	JWF	503-899-2283	daves@jwfowler.com
Miranda McNeill	Slayden	619 647 4244	Slayden.bids@ mwhconstructors.com
PAT RANGLES	McCLURE & SONS INC.	425-316-6999	BIDS@MCCLOUREANDSONS.COM



Pre-Bid Meeting Sign in Sheet
City of Stevenson – WWTP Improvements
10:00 AM Wednesday, March 16, 2022

wallis
*engineering

<u>Name</u>	<u>Business Name</u>	<u>Phone #</u>	<u>Email</u>
YANI VAIVODA	CRESTLINE CONSTRUCTION	541.506.4000	yani@crestlineconstruction.com