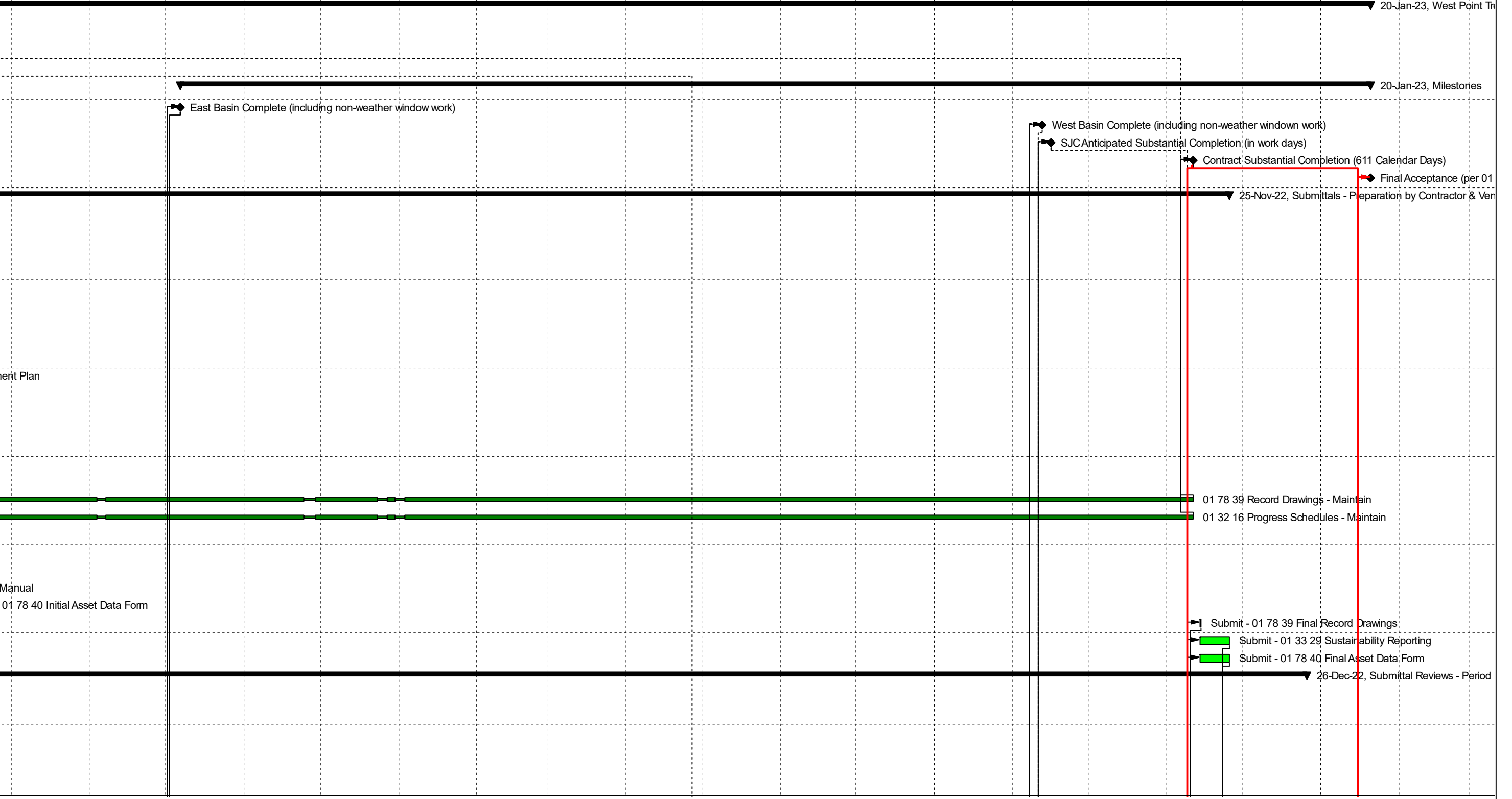


Activity ID	Activity Name	Original Duration	Early Start	Late Start	Early Finish	Late Finish	Total Float	Budgeted Expense Cost	Subcontractors	Qtr 2, 2021					Qtr 3, 2021	
										Mar	Apr	May	Jun	Jul		
<b>West Point Treatment Plant Primary Sedimentation Area Roof Structure - Baseline</b>																
<b>Pre-Contract Items</b>																
A1010	Contract Execution	0	02-Mar-21	04-Mar-21				\$0.00		10-Mar-21, Pre-Contract Items						
A2210	Notice to Proceed	0	10-Mar-21	10-Mar-21				\$0.00		Contract Execution						
<b>Milestones</b>																
A4330	East Basin Complete (including non-weather window work)	0			06-Oct-21	02-Feb-22	81	\$0.00		Notice to Proceed						
A4480	West Basin Complete (including non-weather window work)	0			12-Sep-22	11-Nov-22	44	\$0.00								
A2290	SJC Anticipated Substantial Completion (in work days)	0	16-Sep-22	11-Nov-22			41	\$0.00								
A2280	Contract Substantial Completion (611 Calendar Days)	0			11-Nov-22	11-Nov-22	0	\$0.00								
A2400	Final Acceptance (per 01 14 00 -1.02B - determined post substantial) - Estimated	0			20-Jan-23	20-Jan-23	0	\$0.00								
<b>Submittals - Preparation by Contractor &amp; Vendors</b>																
A2350	Submit - 01 35 29 - Health and Safety	2	02-Mar-21	04-Mar-21	03-Mar-21	05-Mar-21	2	\$0.00		Submit - 01 35 29 - Health and Safety						
A2360	Submit - 03 20 00 - Concrete Reinforcing	24	10-Mar-21	18-Mar-21	12-Apr-21	20-Apr-21	6	\$0.00		Submit - 03 20 00 - Concrete Reinforcing						
A2370	Submit - 03 37 13 - Shotcrete	15	10-Mar-21	31-Mar-21	30-Mar-21	20-Apr-21	15	\$0.00		Submit - 03 37 13 - Shotcrete						
A2380	Submit - 03 60 00 - Grouting	5	10-Mar-21	09-Apr-21	16-Mar-21	15-Apr-21	22	\$0.00		Submit - 03 60 00 - Grouting						
A3560	Submit - 03 83 00 - Cutting and Patching	5	10-Mar-21	09-Apr-21	16-Mar-21	15-Apr-21	22	\$0.00		Submit - 03 83 00 - Cutting and Patching						
A3580	Submit - 02 41 00 Crane Pick Plan	5	10-Mar-21	02-Apr-21	16-Mar-21	08-Apr-21	17	\$0.00		Submit - 02 41 00 Crane Pick Plan						
A3590	Submit - 02 83 00 Lead Abatement Plan	1	10-Mar-21	26-Mar-21	10-Mar-21	26-Mar-21	12	\$0.00		Submit - 02 83 00 Lead Abatement Plan						
A3600	Submit - 02 84 00 PCB Abatement Plan	1	10-Mar-21	26-Mar-21	10-Mar-21	26-Mar-21	12	\$0.00		Submit - 02 84 00 PCB Abatement Plan						
A3610	Submit - 05 50 00 Electrical Conduit Support Frames (12/S460)	5	10-Mar-21	15-Mar-21	16-Mar-21	19-Mar-21	3	\$0.00		Submit - 05 50 00 Electrical Conduit Support Frames (12/S460)						
A3620	Submit - 01 19 50 Odor Control Panel Removal & Replacement Plan	20	10-Mar-21	17-Mar-21	06-Apr-21	13-Apr-21	5	\$0.00		Submit - 01 19 50 Odor Control Panel Removal & Replacement Plan						
A4490	Submit - 05 12 00 - Structural Steel	19	10-Mar-21	10-Mar-21	05-Apr-21	05-Apr-21	0	\$0.00		Submit - 05 12 00 - Structural Steel						
A4500	Submit - Div 26 Submittals	10	10-Mar-21	12-Apr-21	23-Mar-21	23-Apr-21	23	\$0.00		Submit - Div 26 Submittals						
A4510	Submit - 06 84 01 Fiberglass Roof Decking	41	10-Mar-21	12-Mar-21	05-May-21	07-May-21	2	\$0.00		Submit - 06 84 01 Fiberglass Roof Decking						
A4520	Submit - 06 84 02 - FRP Grating	10	10-Mar-21	13-Apr-21	23-Mar-21	26-Apr-21	24	\$0.00		Submit - 06 84 02 - FRP Grating						
A4530	Submit - 40 05 36.13 - FRP Duct for Foul Air	25	10-Mar-21	11-Mar-21	13-Apr-21	14-Apr-21	1	\$0.00		Submit - 40 05 36.13 - FRP Duct for Foul Air						
A4640	Submit - 45 05 01 Duct Supports	26	10-Mar-21	18-Mar-21	14-Apr-21	22-Apr-21	6	\$0.00		Submit - 45 05 01 Duct Supports						
A4810	01 78 39 Record Drawings - Maintain	431	10-Mar-21	10-Mar-21	11-Nov-22	11-Nov-22	0	\$202,686.00		Submit - 01 78 39 Record Drawings - Maintain						
A4840	01 32 16 Progress Schedules - Maintain	431	10-Mar-21	10-Mar-21	11-Nov-22	11-Nov-22	0	\$202,686.00		Submit - 01 32 16 Progress Schedules - Maintain						
A4930	Submit - 40 05 93 Skum Skimmer Motors	23	10-Mar-21	11-Mar-21	09-Apr-21	12-Apr-21	1	\$0.00		Submit - 40 05 93 Skum Skimmer Motors						
A4990	Submit - 41 22 23.19 Monorail Hoist	20	10-Mar-21	19-Mar-21	06-Apr-21	15-Apr-21	7	\$0.00		Submit - 41 22 23.19 Monorail Hoist						
A5100	Submit - Portable Stairs	15	10-Mar-21	10-Nov-21	30-Mar-21	02-Dec-21	172	\$0.00		Submit - Portable Stairs						
A4870	Submit - 01 78 23 O&M Manual	20	11-May-21	22-Jul-21	08-Jun-21	18-Aug-21	50	\$0.00		Submit - 01 78 23 O&M Manual						
A4890	Submit - 01 78 40 Initial Asset Data Form	10	23-Jun-21	27-Oct-22	07-Jul-21	09-Nov-22	345	\$0.00		Submit - 01 78 40 Initial Asset Data Form						
A4820	Submit - 01 78 39 Final Record Drawings	1	14-Nov-22	22-Dec-22	14-Nov-22	22-Dec-22	28	\$0.00		Submit - 01 78 39 Final Record Drawings						
A4850	Submit - 01 33 29 Sustainability Reporting	10	14-Nov-22	09-Dec-22	25-Nov-22	22-Dec-22	19	\$0.00		Submit - 01 33 29 Sustainability Reporting						
A4910	Submit - 01 78 40 Final Asset Data Form	10	14-Nov-22	09-Dec-22	25-Nov-22	22-Dec-22	19	\$0.00		Submit - 01 78 40 Final Asset Data Form						
<b>Submittal Reviews - Period by Owner (30 days = 21 Work Days)</b>																
A2410	Review/Approval - 01 35 29 - Health and Safety	21	04-Mar-21	08-Mar-21	01-Apr-21	05-Apr-21	2	\$0.00		Review/Approval - 01 35 29 - Health and Safety						
A4600	Review/Approval - 02 83 00 Lead Abatement Plan	21	11-Mar-21	29-Mar-21	08-Apr-21	26-Apr-21	12	\$0.00		Review/Approval - 02 83 00 Lead Abatement Plan						
A4610	Review/Approval - 02 84 00 PCB Abatement Plan	21	11-Mar-21	29-Mar-21	08-Apr-21	26-Apr-21	12	\$0.00		Review/Approval - 02 84 00 PCB Abatement Plan						
A2440	Review/Approval - 03 60 00 - Grouting	21	17-Mar-21	16-Apr-21	14-Apr-21	14-May-21	22	\$0.00		Review/Approval - 03 60 00 - Grouting						
A3570	Review/Approval - 03 83 00 - Cutting and Patching	21	17-Mar-21	16-Apr-21	14-Apr-21	14-May-21	22	\$0.00		Review/Approval - 03 83 00 - Cutting and Patching						
A4590	Review/Approval - 02 41 00 Crane Pick Plan	21	17-Mar-21	09-Apr-21	14-Apr-21	07-May-21	17	\$0.00		Review/Approval - 02 41 00 Crane Pick Plan						

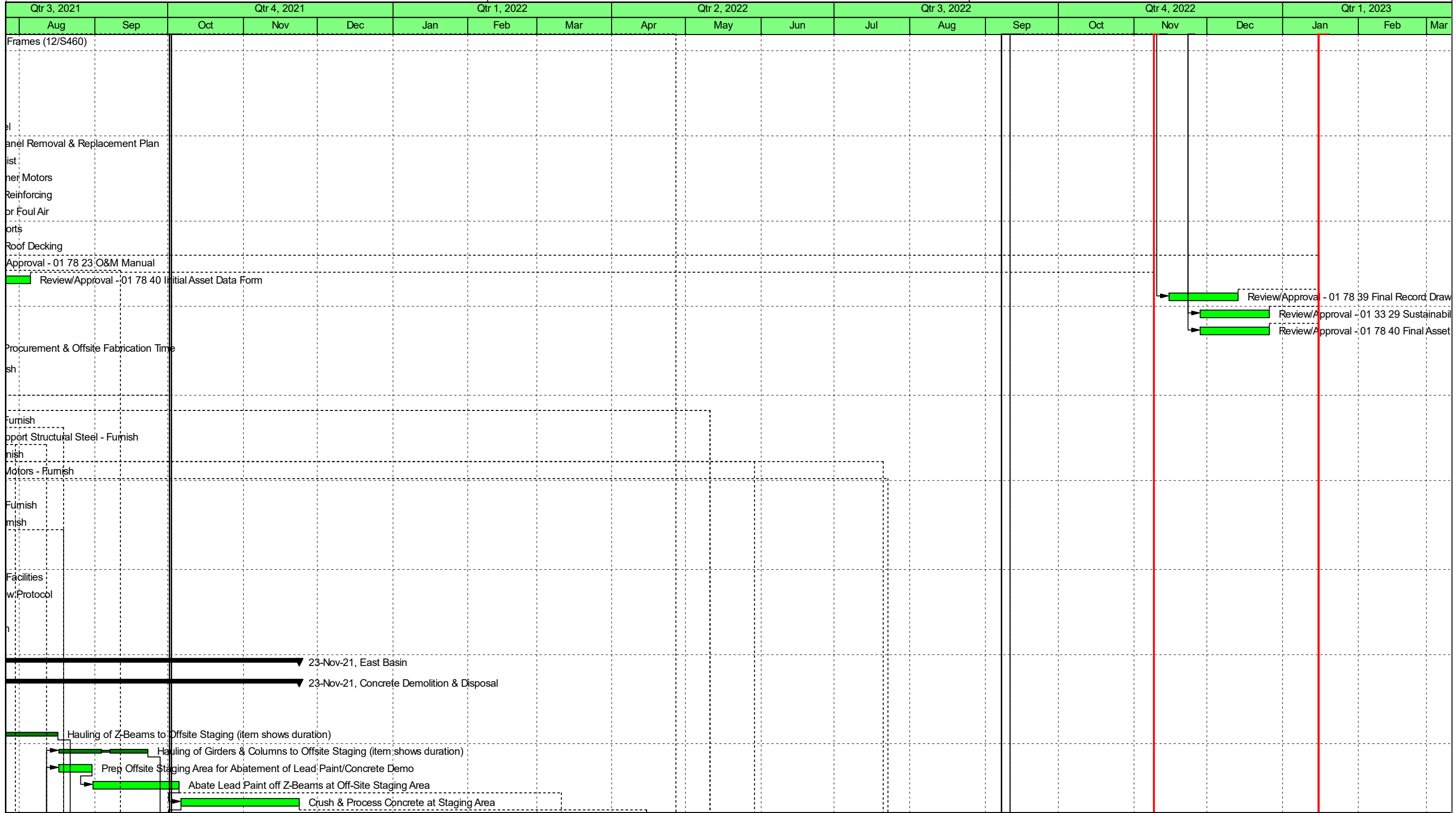
█ Remaining Level of Effort   
 █ Remaining Work   
  Summary  
█ Actual Level of Effort   
 █ Critical Remaining Work  
 Actual Work   
 ◆ Milestone

Qtr 3, 2021			Qtr 4, 2021			Qtr 1, 2022			Qtr 2, 2022			Qtr 3, 2022			Qtr 4, 2022			Qtr 1, 2023		
Aug	Sep	Oct	Nov	Dec	Jan	Feb	Mar	Apr	May	Jun	Jul	Aug	Sep	Oct	Nov	Dec	Jan	Feb	Mar	



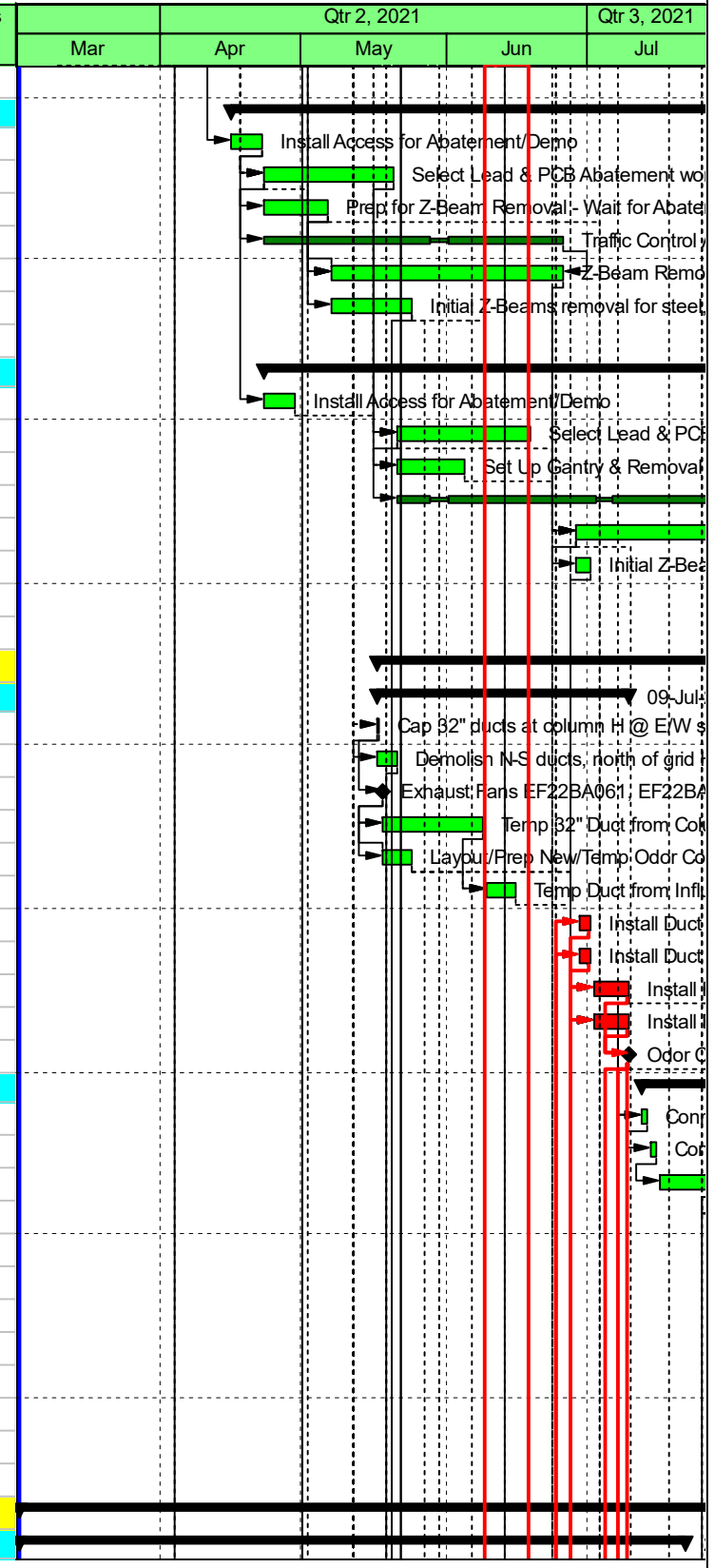
Activity ID	Activity Name	Original Duration	Early Start	Late Start	Early Finish	Late Finish	Total Float	Budgeted Expense Cost	Subcontractors	25-May-21 22:56					
										Qtr 2, 2021					
											Mar	Apr	May	Jun	Jul
A4620	Review/Approval - 05 50 00 Electrical Conduit Support Frames (12/S460)	21	17-Mar-21	22-Mar-21	14-Apr-21	19-Apr-21	3	\$0.00		Review/Approval - 05 50 00 Electrical Conduit Support					
A4550	Review/Approval - Div 26 Submittals	21	24-Mar-21	26-Apr-21	21-Apr-21	24-May-21	23	\$0.00		Review/Approval - Div 26 Submittals					
A4570	Review/Approval - 06 84 02 - FRP Grating	21	24-Mar-21	27-Apr-21	21-Apr-21	25-May-21	24	\$0.00		Review/Approval - 06 84 02 - FRP Grating					
A2430	Review/Approval - 03 37 13 - Shotcrete	21	31-Mar-21	21-Apr-21	28-Apr-21	19-May-21	15	\$0.00		Review/Approval - 03 37 13 - Shotcrete					
A5110	Review/Approval - Portable Stairs	21	31-Mar-21	03-Dec-21	28-Apr-21	04-Jan-22	172	\$0.00		Review/Approval - Portable Stairs					
A4540	Review/Approval - 05 12 00 - Structural Steel	21	06-Apr-21	06-Apr-21	04-May-21	04-May-21	0	\$0.00		Review/Approval - 05 12 00 - Structural Steel					
A4630	Review/Approval - 01 19 50 Odor Control Panel Removal & Replacement Plan	21	07-Apr-21	14-Apr-21	05-May-21	12-May-21	5	\$0.00		Review/Approval - 01 19 50 Odor Control P					
A5000	Review/Approval - 41 22 23.19 Monorail Hoist	21	07-Apr-21	16-Apr-21	05-May-21	14-May-21	7	\$0.00		Review/Approval - 41 22 23.19 Monorail Ho					
A4940	Review/Approval - 40 05 93 Skum Skimmer Motors	21	12-Apr-21	13-Apr-21	10-May-21	11-May-21	1	\$0.00		Review/Approval - 40 05 93 Skum Skimm					
A2420	Review/Approval - 03 20 00 - Concrete Reinforcing	21	13-Apr-21	21-Apr-21	11-May-21	19-May-21	6	\$0.00		Review/Approval - 03 20 00 - Concrete R					
A4580	Review/Approval - 40 05 36.13 - FRP Duct for Foul Air	15	14-Apr-21	15-Apr-21	04-May-21	05-May-21	1	\$0.00		Review/Approval - 40 05 36.13 - FRP Duct f					
A4650	Review/Approval - 45 05 01 Duct Supports	21	15-Apr-21	23-Apr-21	13-May-21	21-May-21	6	\$0.00		Review/Approval - 45 05 01 Duct Supp					
A4560	Review/Approval - 06 84 01 Fiberglass Roof Decking	5	06-May-21	10-May-21	12-May-21	14-May-21	2	\$0.00		Review/Approval - 06 84 01 Fiberglass					
A4880	Review/Approval - 01 78 23 O&M Manual	21	09-Jun-21	19-Aug-21	08-Jul-21	17-Sep-21	50	\$202,686.00		Review					
A4900	Review/Approval - 01 78 40 Initial Asset Data Form	21	08-Jul-21	10-Nov-22	05-Aug-21	08-Dec-22	345	\$152,014.50							
A4830	Review/Approval - 01 78 39 Final Record Drawings	21	15-Nov-22	23-Dec-22	13-Dec-22	20-Jan-23	28	\$202,686.00							
A4860	Review/Approval - 01 33 29 Sustainability Reporting	21	28-Nov-22	23-Dec-22	26-Dec-22	20-Jan-23	19	\$101,343.00							
A4920	Review/Approval - 01 78 40 Final Asset Data Form	21	28-Nov-22	23-Dec-22	26-Dec-22	20-Jan-23	19	\$50,671.50							
<b>Procurement &amp; Offsite Fabrication Time</b>		<b>54</b>	<b>15-Apr-21</b>	<b>20-Apr-21</b>	<b>30-Jun-21</b>	<b>01-Feb-22</b>	<b>148</b>	<b>\$2,527,000.00</b>		30-Jun-21, 1					
A3660	Conduit Supports Metal Fabrications - Furnish	15	15-Apr-21	20-Apr-21	05-May-21	10-May-21	3	\$0.00		Conduit Supports Metal Fabrications - Furn					
A3650	FRP Grating - Furnish	25	22-Apr-21	26-May-21	26-May-21	30-Jun-21	24	\$45,000.00		FRP Grating - Furnish					
A5120	Portable Stairs - Furnish	20	29-Apr-21	05-Jan-22	26-May-21	01-Feb-22	172	\$42,000.00		Portable Stairs - Furnish					
A3640	FRP Duct - Furnish	40	05-May-21	06-May-21	30-Jun-21	01-Jul-21	1	\$1,185,000.00		FRP Duct - I					
A3670	Canopy Roof /Duct Support Structural Steel - Furnish	27	05-May-21	05-May-21	11-Jun-21	11-Jun-21	0	\$800,000.00		Canopy Roof /Duct Su					
A5010	Monorail Hoist - Furnish	30	06-May-21	17-May-21	17-Jun-21	28-Jun-21	7	\$80,000.00		Monorail Hoist - Fu					
A4950	Skum Skimmer Motors - Furnish	30	11-May-21	12-May-21	22-Jun-21	23-Jun-21	1	\$20,000.00		Skum Skimmer					
A5350	Concrete Reinf - Furnish	15	12-May-21	11-Jun-21	02-Jun-21	01-Jul-21	21	\$0.00		Concrete Reinf - Furnish					
A4660	FRP Roof Decking - Furnish	23	13-May-21	17-May-21	15-Jun-21	17-Jun-21	2	\$130,000.00		FRP Roof Decking -					
A3680	Duct Supports - Furnish	25	14-May-21	24-May-21	18-Jun-21	28-Jun-21	6	\$225,000.00		Duct Supports - Fu					
<b>Mobilization</b>		<b>19</b>	<b>02-Apr-21</b>	<b>06-Apr-21</b>	<b>28-Apr-21</b>	<b>15-Jun-21</b>	<b>33</b>	<b>\$944,401.00</b>		28-Apr-21, Mobilization					
A2460	Mobilization to Jobsite	5	02-Apr-21	06-Apr-21	08-Apr-21	12-Apr-21	2	\$709,401.00		Mobilization to Jobsite					
A2530	Constraint Orientation 01 14 00 - 1.04.A.1 Contractors Use of Facilities	0	02-Apr-21	17-May-21			31	\$0.00		Constraint Orientation 01 14 00 - 1.04.A.1 Contractors Use of					
A2540	Constraint Orientation 01 14 00 - 1.04.A.2 Tunnel Access / Flow Protocol	0	02-Apr-21	17-May-21			31	\$0.00		Constraint Orientation 01 14 00 - 1.04.A.2 Tunnel Access/ Flo					
A2640	Traffic Control Access Road	5	09-Apr-21	10-May-21	15-Apr-21	14-May-21	21	\$0.00		Traffic Control Access Road					
A2630	Demolition Equipment / Crane / Setup - Mobilization	5	15-Apr-21	10-May-21	21-Apr-21	14-May-21	17	\$85,000.00		Demolition Equipment / Crane / Setup - Mobilization					
A3480	Furnish/Mob Gantry Crane - Phase 2	5	22-Apr-21	09-Jun-21	28-Apr-21	15-Jun-21	33	\$150,000.00		Furnish/Mob Gantry Crane - Phase 2					
<b>East Basin</b>		<b>188</b>	<b>02-Mar-21</b>	<b>13-Apr-21</b>	<b>23-Nov-21</b>	<b>23-Sep-22</b>	<b>214</b>	<b>\$7,865,738.50</b>							
<b>Concrete Demolition &amp; Disposal</b>		<b>160</b>	<b>09-Apr-21</b>	<b>13-Apr-21</b>	<b>23-Nov-21</b>	<b>23-Sep-22</b>	<b>214</b>	<b>\$2,754,752.50</b>							
A3040	Install Temporary Protections - Basin Work	5	09-Apr-21	04-May-21	15-Apr-21	10-May-21	17	\$15,000.00		Install Temporary Protections - Basin Work					
A3240	Install Access to Roof Level	5	09-Apr-21	13-Apr-21	15-Apr-21	19-Apr-21	2	\$0.00		Install Access to Roof Level					
A3740	Hauling of Z-Beams to Offsite Staging (item shows duration)	70	07-May-21	11-May-21	16-Aug-21	18-Aug-21	2	\$125,000.00							
A3750	Hauling of Girders & Columns to Offsite Staging (item shows duration)	26	17-Aug-21	20-Dec-21	22-Sep-21	26-Jan-22	86	\$50,000.00							
A5280	Prep Offsite Staging Area for Abatement of Lead Paint/Concrete Demo	10	17-Aug-21	20-Jun-22	30-Aug-21	01-Jul-22	214	\$75,000.00							
A5290	Abate Lead Paint off Z-Beams at Off-Site Staging Area	25	31-Aug-21	04-Jul-22	05-Oct-21	05-Aug-22	214	\$300,000.00							
A5300	Crush & Process Concrete at Staging Area	35	06-Oct-21	08-Aug-22	23-Nov-21	23-Sep-22	214	\$250,000.00							

█ Remaining Level of Effort   
 █ Remaining Work   
  Summary  
█ Actual Level of Effort   
 █ Critical Remaining Work  
 Actual Work   
 ◆ Milestone

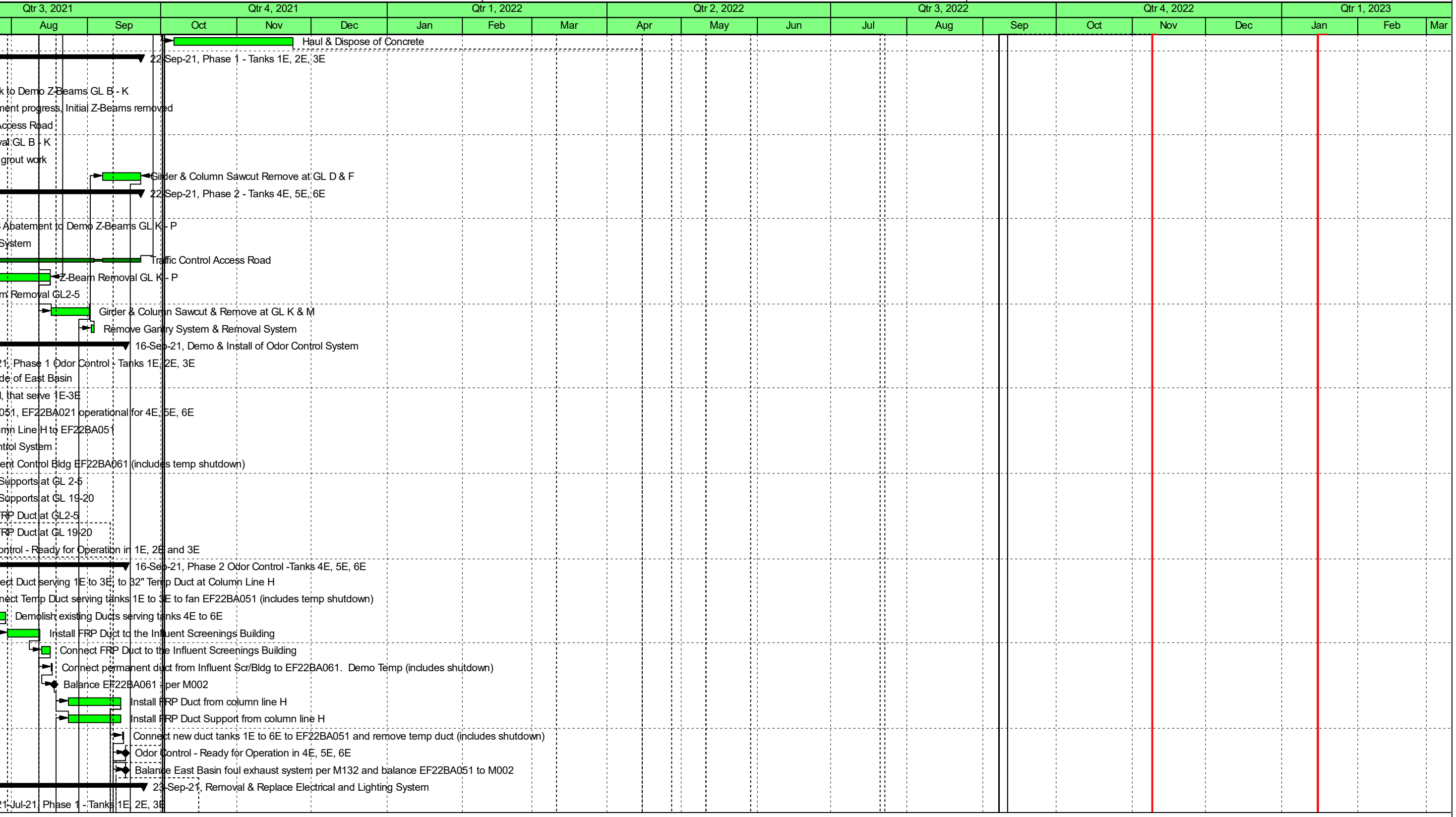


█ Remaining Level of Effort    █ Remaining Work     Summary  
█ Actual Level of Effort    █ Critical Remaining Work  
█ Actual Work    ◆ Milestone

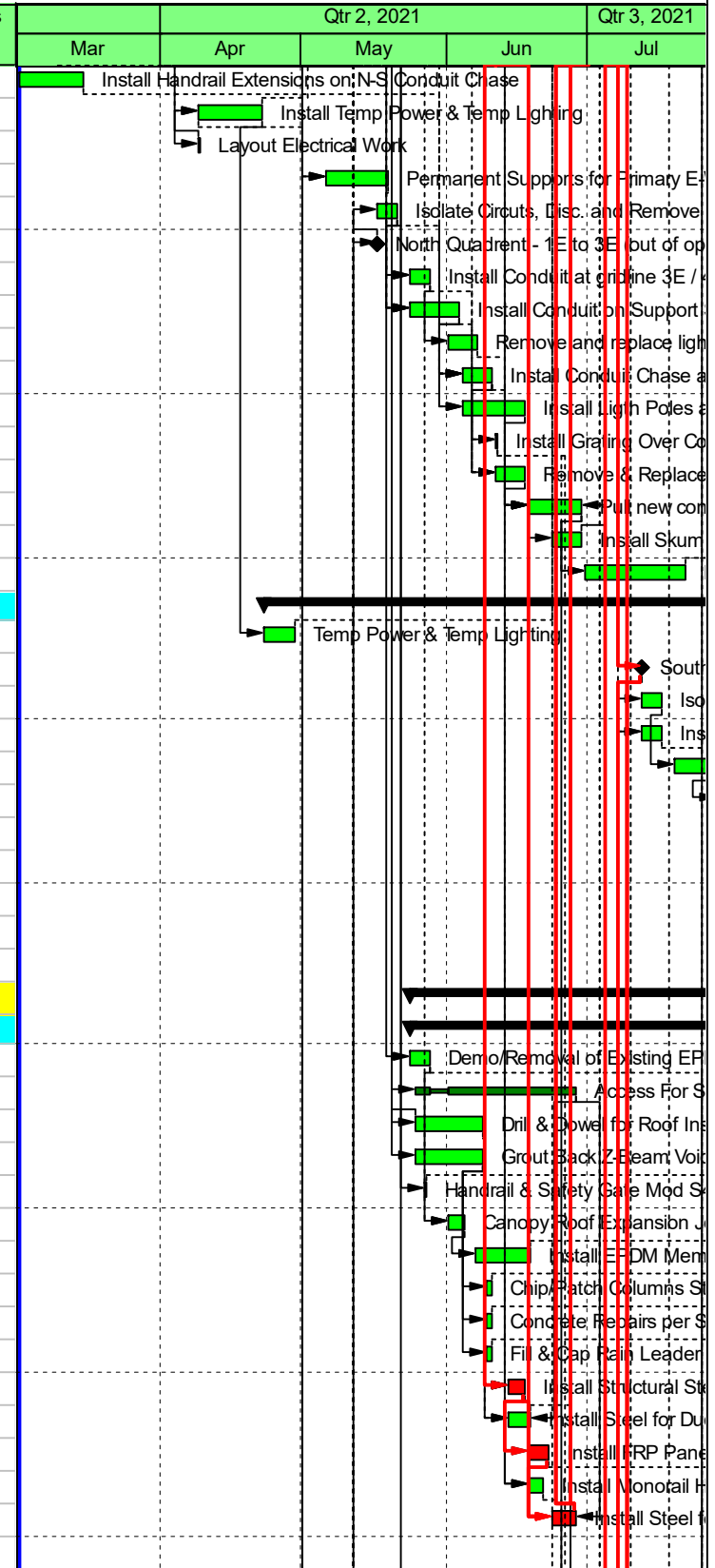
Activity ID	Activity Name	Original Duration	Early Start	Late Start	Early Finish	Late Finish	Total Float	Budgeted Expense Cost	Subcontractors	Qtr 2, 2021					Qtr 3, 2021	
										Mar	Apr	May	Jun	Jul		
A5340	Haul & Dispose of Concrete	35	06-Oct-21	08-Aug-22	23-Nov-21	23-Sep-22	214	\$124,792.50	OMA							
<b>Phase 1 - Tanks 1E, 2E, 3E</b>																
A3500	Install Access for Abatement/Demo	5	16-Apr-21	20-Apr-21	22-Apr-21	26-Apr-21	2	\$25,000.00								
A3010	Select Lead & PCB Abatement work to Demo Z-Beams GL B - K	20	23-Apr-21	27-Apr-21	20-May-21	24-May-21	2	\$250,000.00	PNE							
A3430	Prep for Z-Beam Removal - Wait for Abatement progress, Initial Z-Beams removed	10	23-Apr-21	27-Apr-21	06-May-21	10-May-21	2	\$0.00								
A3460	Traffic Control Access Road	45	23-Apr-21	27-Apr-21	25-Jun-21	29-Jun-21	2	\$42,500.00								
A3030	Z-Beam Removal GL B - K	35	07-May-21	11-May-21	25-Jun-21	29-Jun-21	2	\$374,080.00								
A5260	Initial Z-Beams removal for steel, grout work	12	07-May-21	12-May-21	24-May-21	27-May-21	3	\$0.00								
A3720	Girder & Column Sawcut Remove at GL D & F	12	07-Sep-21	11-Jan-22	22-Sep-21	26-Jan-22	86	\$162,500.00								
<b>Phase 2 - Tanks 4E, 5E, 6E</b>																
A3520	Install Access for Abatement/Demo	5	23-Apr-21	23-Jun-21	29-Apr-21	29-Jun-21	42	\$25,000.00								
A3050	Select Lead & PCB Abatement to Demo Z-Beams GL K - P	20	21-May-21	30-Jun-21	18-Jun-21	28-Jul-21	27	\$250,000.00	PNE							
A3730	Set Up Gantry & Removal System	10	21-May-21	16-Jun-21	04-Jun-21	29-Jun-21	17	\$140,000.00								
A5360	Traffic Control Access Road	86	21-May-21	30-Jun-21	22-Sep-21	26-Jan-22	86	\$42,500.00								
A3060	Z-Beam Removal GL K - P	35	28-Jun-21	30-Jun-21	16-Aug-21	18-Aug-21	2	\$250,880.00								
A3530	Initial Z-Beam Removal GL2-5	4	28-Jun-21	14-Jul-21	01-Jul-21	19-Jul-21	11	\$0.00								
A3710	Girder & Column Sawcut & Remove at GL K & M	12	17-Aug-21	20-Dec-21	01-Sep-21	06-Jan-22	86	\$162,500.00								
A3760	Remove Gantry System & Removal System	2	02-Sep-21	07-Jan-22	03-Sep-21	10-Jan-22	86	\$90,000.00								
<b>Demo &amp; Install of Odor Control System</b>																
<b>Phase 1 Odor Control - Tanks 1E, 2E, 3E</b>																
A2650	Cap 32" ducts at column H @ E/W side of East Basin	1	17-May-21	17-May-21	09-Jul-21	29-Dec-21	119	\$675,000.00								
A2660	Demolish N-S ducts, north of grid H, that serve 1E-3E	5	17-May-21	22-Dec-21	21-May-21	29-Dec-21	152	\$175,000.00	PNE							
A2670	Exhaust Fans EF22BA061, EF22BA051, EF22BA021 operational for 4E, 5E, 6E	0	18-May-21	04-Jun-21			12	\$0.00								
A2680	Temp 32" Duct from Column Line H to EF22BA051	15	18-May-21	04-Jun-21	08-Jun-21	24-Jun-21	12	\$210,000.00	Capital							
A3630	Layout/Prep New/Temp Odor Control System	5	18-May-21	04-Jun-21	24-May-21	10-Jun-21	12	\$50,000.00	Capital							
A2690	Temp Duct from Influent Control Bldg EF22BA061 (includes temp shutdown)	5	09-Jun-21	25-Jun-21	15-Jun-21	01-Jul-21	12	\$20,000.00	Capital							
A2990	Install Duct Supports at GL 2-5	3	29-Jun-21	29-Jun-21	01-Jul-21	01-Jul-21	0	\$30,000.00	Capital							
A3420	Install Duct Supports at GL 19-20	3	29-Jun-21	29-Jun-21	01-Jul-21	01-Jul-21	0	\$30,000.00	Capital							
A2700	Install FRP Duct at GL2-5	5	02-Jul-21	02-Jul-21	09-Jul-21	09-Jul-21	0	\$72,500.00	Capital							
A2870	Install FRP Duct at GL 19-20	5	02-Jul-21	02-Jul-21	09-Jul-21	09-Jul-21	0	\$72,500.00	Capital							
A2300	Odor Control - Ready for Operation in 1E, 2E and 3E	0			09-Jul-21	09-Jul-21	0	\$0.00								
<b>Phase 2 Odor Control - Tanks 4E, 5E, 6E</b>																
A2710	Connect Duct serving 1E to 3E, to 32" Temp Duct at Column Line H	2	12-Jul-21	20-Jul-21	13-Jul-21	21-Jul-21	6	\$0.00	Capital							
A2720	Connect Temp Duct serving tanks 1E to 3E to fan EF22BA051 (includes temp shutdown)	2	14-Jul-21	22-Jul-21	15-Jul-21	23-Jul-21	6	\$5,000.00	Capital							
A2730	Demolish existing Ducts serving tanks 4E to 6E	10	16-Jul-21	26-Jul-21	29-Jul-21	06-Aug-21	6	\$175,000.00	PNE							
A2740	Install FRP Duct to the Influent Screenings Building	10	30-Jul-21	09-Aug-21	12-Aug-21	20-Aug-21	6	\$12,500.00	Capital							
A2750	Connect FRP Duct to the Influent Screenings Building	2	13-Aug-21	23-Aug-21	16-Aug-21	24-Aug-21	6	\$2,500.00	Capital							
A2760	Connect permanent duct from Influent Scr/Bldg to EF22BA061. Demo Temp (includes shutdown)	1	17-Aug-21	25-Aug-21	17-Aug-21	25-Aug-21	6	\$2,500.00	Capital							
A2770	Balance EF22BA061 - per M002	0	18-Aug-21	26-Aug-21			6	\$7,500.00	Capital							
A2780	Install FRP Duct from column line H	15	24-Aug-21	26-Aug-21	14-Sep-21	16-Sep-21	2	\$147,500.00	Capital							
A5630	Install FRP Duct Support from column line H	15	24-Aug-21	26-Aug-21	14-Sep-21	16-Sep-21	2	\$60,000.00	Capital							
A2790	Connect new duct tanks 1E to 6E to EF22BA051 and remove temp duct (includes shutdown)	1	15-Sep-21	17-Sep-21	15-Sep-21	17-Sep-21	2	\$5,000.00	Capital							
A2320	Odor Control - Ready for Operation in 4E, 5E, 6E	0			16-Sep-21	17-Sep-21	2	\$0.00								
A2800	Balance East Basin foul exhaust system per M132 and balance EF22BA051 to M002	0	16-Sep-21	17-Sep-21			2	\$7,500.00	Capital							
<b>Removal &amp; Replace Electrical and Lighting System</b>																
<b>Phase 1 - Tanks 1E, 2E, 3E</b>																



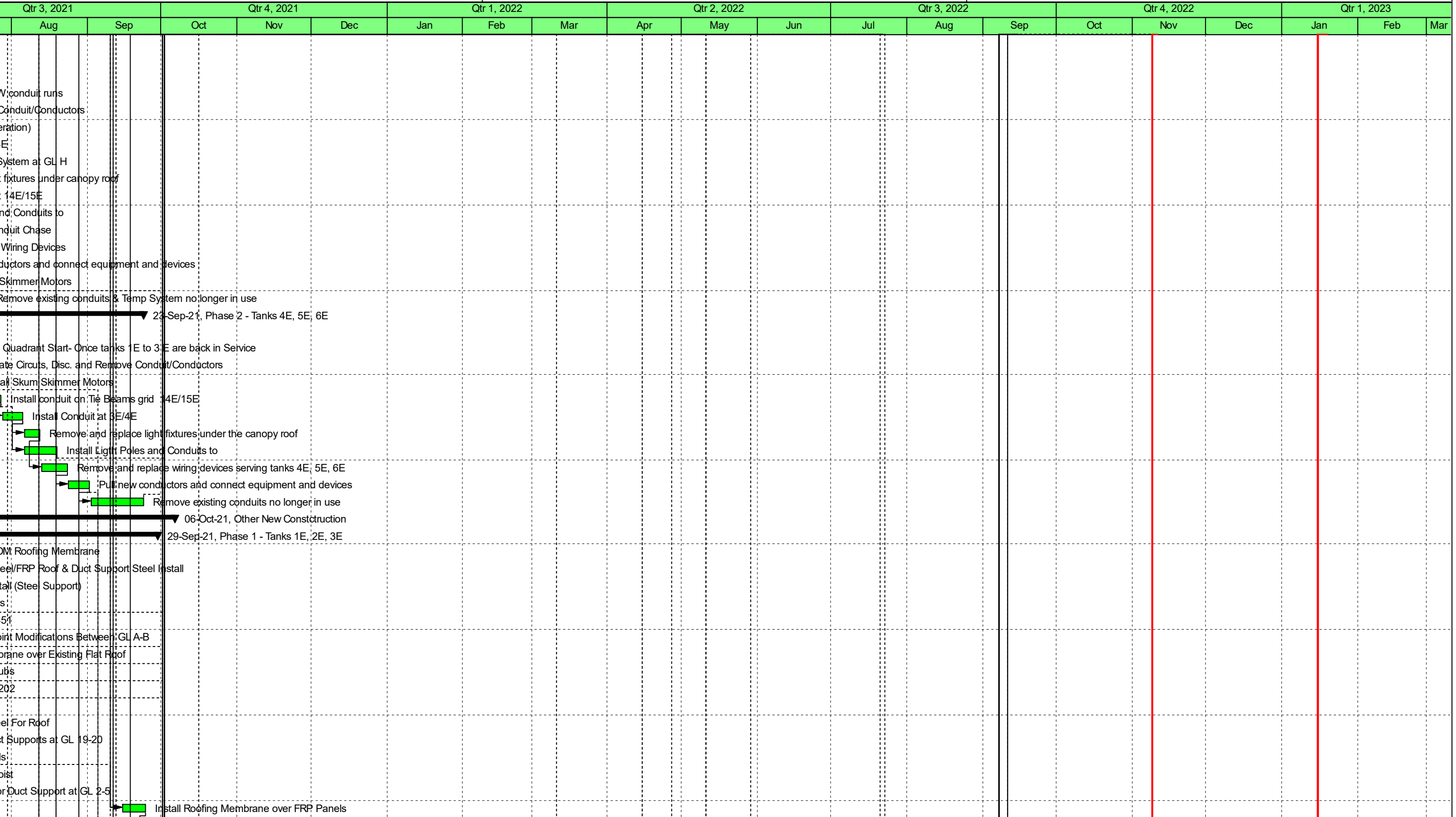
█ Remaining Level of Effort   
 █ Remaining Work   
  Summary  
█ Actual Level of Effort   
 █ Critical Remaining Work  
█ Actual Work   
 ◆ Milestone



Activity ID	Activity Name	Original Duration	Early Start	Late Start	Early Finish	Late Finish	Total Float	Budgeted Expense Cost	Subcontractors	Qtr 2, 2021					Qtr 3, 2021
										Mar	Apr	May	Jun	Jul	
A2980	Install Handrail Extensions on N-S Conduit Chase	10	02-Mar-21	21-May-21	15-Mar-21	04-Jun-21	58	\$30,000.00	KWH	█					
A2960	Install Temp Power & Temp Lighting	10	09-Apr-21	27-Apr-21	22-Apr-21	10-May-21	12	\$50,000.00	SHJ		█				
A5580	Layout Electrical Work	1	09-Apr-21	27-Apr-21	09-Apr-21	27-Apr-21	12	\$25,000.00	SHJ		█				
A2970	Permanent Supports for Primary E-W conduit runs	10	06-May-21	11-May-21	19-May-21	24-May-21	3	\$40,000.00	KWH			█			
A3070	Isolate Circuits, Disc. and Remove Conduit/Conductors	5	17-May-21	18-May-21	21-May-21	24-May-21	1	\$40,000.00	SHJ			█			
A3150	North Quadrant - 1E to 3E (out of operation)	0	17-May-21	18-May-21			1	\$0.00							
A3090	Install Conduit at gridline 3E / 4E	5	24-May-21	07-Jun-21	28-May-21	11-Jun-21	9	\$20,000.00	SHJ			█			
A3690	Install Conduit on Support System at GL H	8	24-May-21	25-May-21	03-Jun-21	04-Jun-21	1	\$50,000.00	SHJ			█			
A3100	Remove and replace light fixtures under canopy roof	5	01-Jun-21	14-Jun-21	07-Jun-21	18-Jun-21	9	\$107,500.00	SHJ			█			
A3080	Install Conduit Chase at 14E/15E	5	04-Jun-21	07-Jun-21	10-Jun-21	11-Jun-21	1	\$30,000.00	SHJ			█			
A3130	Install Ligth Poles and Conduits to	10	04-Jun-21	07-Jun-21	17-Jun-21	18-Jun-21	1	\$112,500.00	SHJ			█			
A3440	Install Grating Over Conduit Chase	1	11-Jun-21	01-Jul-21	11-Jun-21	01-Jul-21	14	\$8,500.00				█			
A3550	Remove & Replace Wiring Devices	5	11-Jun-21	14-Jun-21	17-Jun-21	18-Jun-21	1	\$92,500.00	SHJ			█			
A3110	Pull new conductors and connect equipment and devices	8	18-Jun-21	21-Jun-21	29-Jun-21	30-Jun-21	1	\$95,000.00	SHJ			█			
A3360	Install Skum Skimmer Motors	5	23-Jun-21	24-Jun-21	29-Jun-21	30-Jun-21	1	\$3,750.00	SHJ			█			
A3120	Remove existing conduits & Temp System no longer in use	15	30-Jun-21	13-Jan-22	21-Jul-21	02-Feb-22	135	\$10,000.00	SHJ			█			
<b>Phase 2 - Tanks 4E, 5E, 6E</b>		<b>107</b>	<b>23-Apr-21</b>	<b>23-Jun-21</b>	<b>23-Sep-21</b>	<b>02-Feb-22</b>	<b>90</b>	<b>\$611,250.00</b>							
A3540	Temp Power & Temp Lighting	5	23-Apr-21	23-Jun-21	29-Apr-21	29-Jun-21	42	\$50,000.00	SHJ		█				
A3140	South Quadrant Start- Once tanks 1E to 3 E are back in Service	0	12-Jul-21	12-Jul-21			0	\$0.00							
A3160	Isolate Circuits, Disc. and Remove Conduit/Conductors	5	12-Jul-21	19-Jul-21	16-Jul-21	23-Jul-21	5	\$40,000.00	SHJ					█	
A4960	Install Skum Skimmer Motors	5	12-Jul-21	02-Sep-21	16-Jul-21	09-Sep-21	38	\$3,750.00	SHJ					█	
A3170	Install conduit on Tie Beams grid 14E/15E	7	19-Jul-21	26-Jul-21	27-Jul-21	03-Aug-21	5	\$50,000.00	SHJ					█	
A3180	Install Conduit at 3E/4E	7	28-Jul-21	04-Aug-21	05-Aug-21	12-Aug-21	5	\$50,000.00	SHJ					█	
A3190	Remove and replace light fixtures under the canopy roof	5	06-Aug-21	13-Aug-21	12-Aug-21	19-Aug-21	5	\$107,500.00	SHJ					█	
A3700	Install Ligth Poles and Conduits to	10	06-Aug-21	17-Aug-21	19-Aug-21	30-Aug-21	7	\$112,500.00	SHJ					█	
A3200	Remove and replace wiring devices serving tanks 4E, 5E, 6E	7	13-Aug-21	20-Aug-21	23-Aug-21	30-Aug-21	5	\$92,500.00	SHJ					█	
A3210	Pull new conductors and connect equipment and devices	7	24-Aug-21	31-Aug-21	01-Sep-21	09-Sep-21	5	\$95,000.00	SHJ					█	
A3220	Remove existing conduits no longer in use	15	02-Sep-21	13-Jan-22	23-Sep-21	02-Feb-22	90	\$10,000.00	SHJ					█	
<b>Other New Constcrtion</b>		<b>95</b>	<b>24-May-21</b>	<b>28-May-21</b>	<b>06-Oct-21</b>	<b>02-Feb-22</b>	<b>81</b>	<b>\$834,500.00</b>							
<b>Phase 1 - Tanks 1E, 2E, 3E</b>		<b>90</b>	<b>24-May-21</b>	<b>28-May-21</b>	<b>29-Sep-21</b>	<b>02-Feb-22</b>	<b>86</b>	<b>\$445,250.00</b>							
A3940	Demo/Removal of Existing EPDM Roofing Membrane	5	24-May-21	30-Dec-21	28-May-21	06-Jan-22	152	\$20,000.00	PNE					█	
A3850	Access For Steel/FRP Roof & Duct Support Steel Install	24	25-May-21	28-May-21	28-Jun-21	01-Jul-21	3	\$20,000.00						█	
A3860	Drill & Dowel for Roof Install (Steel Support)	10	25-May-21	28-May-21	08-Jun-21	11-Jun-21	3	\$11,500.00						█	
A3950	Grout Back Z-Beam Voids	10	25-May-21	28-May-21	08-Jun-21	11-Jun-21	3	\$25,000.00						█	
A5530	Handrail & Safety Gate Mod S451	1	27-May-21	02-Feb-22	27-May-21	02-Feb-22	172	\$5,000.00	KWH					█	
A3900	Canopy Roof Expansion Joint Modifications Between GL A-B	4	01-Jun-21	14-Jan-22	04-Jun-21	19-Jan-22	157	\$17,500.00	KWH					█	
A3930	Install EPDM Membrane over Existing Flat Roof	10	07-Jun-21	20-Jan-22	18-Jun-21	02-Feb-22	157	\$75,000.00	Queen					█	
A3970	Chip/Patch Columns Stubs	2	09-Jun-21	01-Feb-22	10-Jun-21	02-Feb-22	163	\$10,000.00						█	
A3980	Concrete Repairs per S202	2	09-Jun-21	01-Feb-22	10-Jun-21	02-Feb-22	163	\$5,000.00						█	
A3990	Fill & Cap Rain Leader	2	09-Jun-21	01-Feb-22	10-Jun-21	02-Feb-22	163	\$3,750.00						█	
A3870	Install Structural Steel For Roof	4	14-Jun-21	14-Jun-21	17-Jun-21	17-Jun-21	0	\$135,000.00						█	
A3890	Install Steel for Duct Supports at GL 19-20	5	14-Jun-21	25-Jun-21	18-Jun-21	01-Jul-21	9	\$17,500.00	KWH					█	
A3910	Install FRP Panels	3	18-Jun-21	18-Jun-21	22-Jun-21	22-Jun-21	0	\$12,500.00						█	
A5020	Install Monorail Hoist	2	18-Jun-21	29-Jun-21	21-Jun-21	30-Jun-21	7	\$16,250.00	KWH					█	
A3880	Install Steel for Duct Support at GL 2-5	4	23-Jun-21	23-Jun-21	28-Jun-21	28-Jun-21	0	\$17,500.00	KWH					█	
A5440	Install Roofing Membrane over FRP Panels	8	15-Sep-21	12-Jan-22	24-Sep-21	21-Jan-22	81	\$50,000.00	Queen					█	

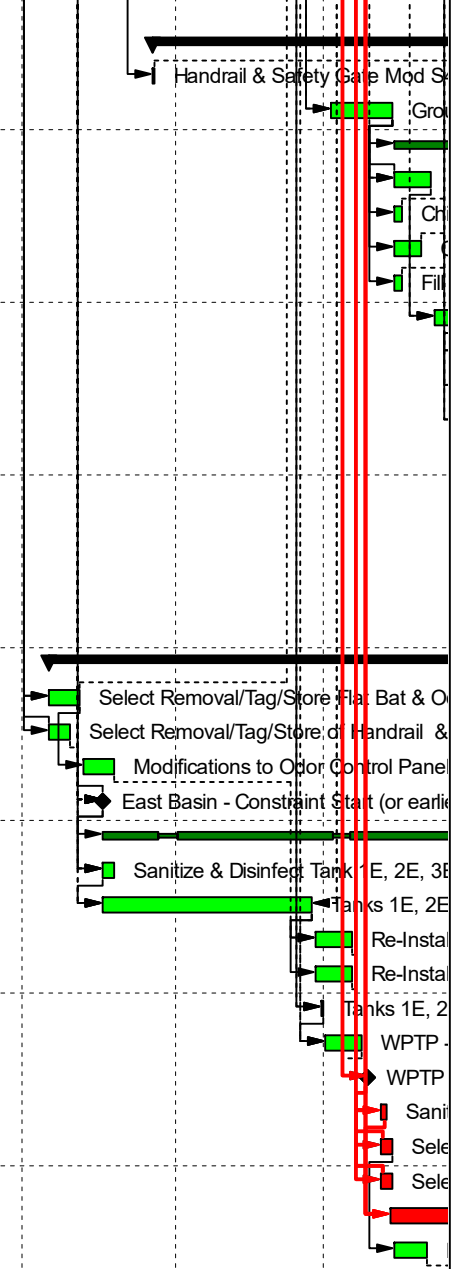


█ Remaining Level of Effort   
 █ Actual Level of Effort   
 █ Critical Remaining Work   
 ◆ Milestone   
 ▾ Summary

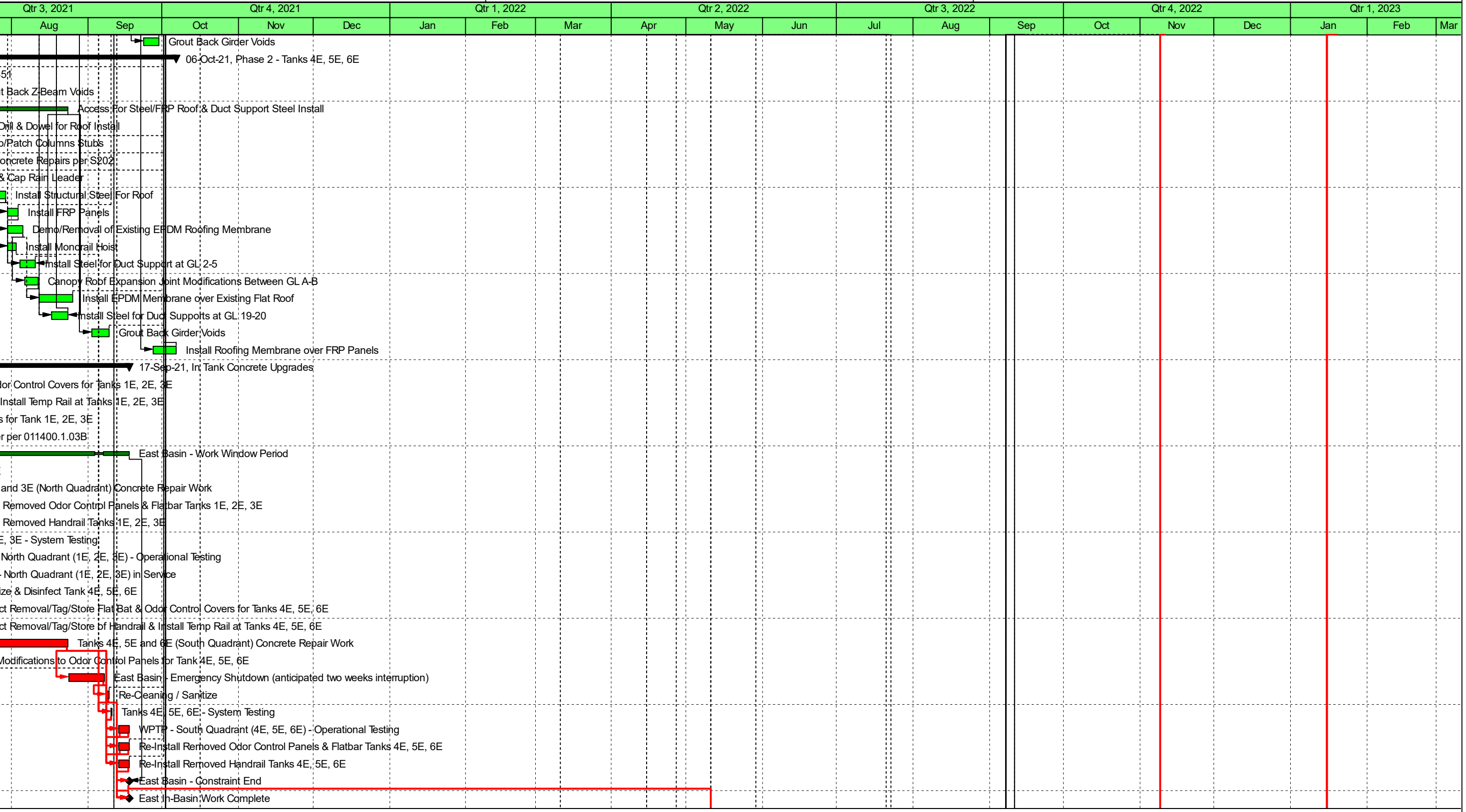




Activity ID	Activity Name	Original Duration	Early Start	Late Start	Early Finish	Late Finish	Total Float	Budgeted Expense Cost	Subcontractors	Qtr 2, 2021					Qtr 3, 2021
										Mar	Apr	May	Jun	Jul	
A3960	Grout Back Girder Voids	5	23-Sep-21	27-Jan-22	29-Sep-21	02-Feb-22	86	\$3,750.00							
<b>Phase 2 - Tanks 4E, 5E, 6E</b>		<b>92</b>	<b>27-May-21</b>	<b>20-Jul-21</b>	<b>06-Oct-21</b>	<b>02-Feb-22</b>	<b>81</b>	<b>\$389,250.00</b>							
A5540	Handrail & Safety Gate Mod S451	1	27-May-21	02-Feb-22	27-May-21	02-Feb-22	172	\$5,000.00	KWH						
A4720	Grout Back Z-Beam Voids	8	02-Jul-21	20-Jul-21	14-Jul-21	29-Jul-21	11	\$25,000.00							
A4670	Access For Steel/FRP Roof & Duct Support Steel Install	28	15-Jul-21	30-Jul-21	23-Aug-21	25-Aug-21	2	\$20,000.00							
A4680	Drill & Dowel for Roof Install	6	15-Jul-21	30-Jul-21	22-Jul-21	06-Aug-21	11	\$11,500.00							
A4740	Chip/Patch Columns Stubs	2	15-Jul-21	01-Feb-22	16-Jul-21	02-Feb-22	138	\$10,000.00							
A4750	Concrete Repairs per S202	4	15-Jul-21	28-Jan-22	20-Jul-21	02-Feb-22	136	\$5,000.00							
A4760	Fill & Cap Rain Leader	2	15-Jul-21	01-Feb-22	16-Jul-21	02-Feb-22	138	\$3,750.00							
A4730	Install Structural Steel For Roof	5	23-Jul-21	09-Aug-21	29-Jul-21	13-Aug-21	11	\$90,000.00	KWH						
A4770	Install FRP Panels	3	30-Jul-21	16-Aug-21	03-Aug-21	18-Aug-21	11	\$12,500.00							
A4690	Demo/Removal of Existing EPDM Roofing Membrane	5	30-Jul-21	07-Jan-22	05-Aug-21	13-Jan-22	110	\$20,000.00	PNE						
A5030	Install Monorail Hoist	2	30-Jul-21	08-Sep-21	02-Aug-21	09-Sep-21	27	\$16,250.00	KWH						
A4790	Install Steel for Duct Support at GL 2-5	5	04-Aug-21	19-Aug-21	10-Aug-21	25-Aug-21	11	\$12,000.00	KWH						
A4700	Canopy Roof Expansion Joint Modifications Between GL A-B	4	06-Aug-21	14-Jan-22	11-Aug-21	19-Jan-22	110	\$17,500.00	KWH						
A4710	Install EPDM Membrane over Existing Flat Roof	10	12-Aug-21	20-Jan-22	25-Aug-21	02-Feb-22	110	\$75,000.00	Queen						
A4780	Install Steel for Duct Supports at GL 19-20	5	17-Aug-21	19-Aug-21	23-Aug-21	25-Aug-21	2	\$12,000.00	KWH						
A4800	Grout Back Girder Voids	5	02-Sep-21	27-Jan-22	09-Sep-21	02-Feb-22	100	\$3,750.00							
A5450	Install Roofing Membrane over FRP Panels	8	27-Sep-21	24-Jan-22	06-Oct-21	02-Feb-22	81	\$50,000.00	Queen						
<b>In Tank Concrete Upgrades</b>		<b>94</b>	<b>06-May-21</b>	<b>13-May-21</b>	<b>17-Sep-21</b>	<b>17-Sep-21</b>	<b>0</b>	<b>\$1,850,486.00</b>							
A3020	Select Removal/Tag/Store Flat Bat & Odor Control Covers for Tanks 1E, 2E, 3E	5	06-May-21	13-May-21	12-May-21	19-May-21	5	\$20,000.00							
A3230	Select Removal/Tag/Store of Handrail & Install Temp Rail at Tanks 1E, 2E, 3E	3	06-May-21	13-May-21	10-May-21	17-May-21	5	\$7,500.00							
A3830	Modifications to Odor Control Panels for Tank 1E, 2E, 3E	5	13-May-21	25-Jun-21	19-May-21	01-Jul-21	30	\$15,000.00	KWH						
A2190	East Basin - Constraint Start (or earlier per 011400.1.03B)	0	17-May-21	17-May-21			0	\$0.00							
A2220	East Basin - Work Window Period	87	17-May-21	17-May-21	17-Sep-21	17-Sep-21	0	\$0.00							
A3770	Sanitize & Disinfect Tank 1E, 2E, 3E	3	17-May-21	20-May-21	19-May-21	24-May-21	3	\$90,000.00	VPC						
A5430	Tanks 1E, 2E and 3E (North Quadrant) Concrete Repair Work	30	17-May-21	20-May-21	28-Jun-21	01-Jul-21	3	\$643,900.00	Conco						
A2480	Re-Install Removed Odor Control Panels & Flatbar Tanks 1E, 2E, 3E	5	29-Jun-21	02-Jul-21	06-Jul-21	09-Jul-21	3	\$22,500.00							
A3780	Re-Install Removed Handrail Tanks 1E, 2E, 3E	5	29-Jun-21	02-Jul-21	06-Jul-21	09-Jul-21	3	\$10,000.00							
A2340	Tanks 1E, 2E, 3E - System Testing	1	30-Jun-21	01-Jul-21	30-Jun-21	01-Jul-21	1	\$101,343.00							
A2270	WPTP - North Quadrant (1E, 2E, 3E) - Operational Testing	5	01-Jul-21	02-Jul-21	08-Jul-21	09-Jul-21	1	\$0.00							
A2520	WPTP - North Quadrant (1E, 2E, 3E) in Service	0			09-Jul-21	09-Jul-21	0	\$0.00							
A2470	Sanitize & Disinfect Tank 4E, 5E, 6E	2	12-Jul-21	12-Jul-21	13-Jul-21	13-Jul-21	0	\$90,000.00	VPC						
A3790	Select Removal/Tag/Store Flat Bat & Odor Control Covers for Tanks 4E, 5E, 6E	3	12-Jul-21	12-Jul-21	14-Jul-21	14-Jul-21	0	\$20,000.00							
A3800	Select Removal/Tag/Store of Handrail & Install Temp Rail at Tanks 4E, 5E, 6E	3	12-Jul-21	12-Jul-21	14-Jul-21	14-Jul-21	0	\$7,500.00							
A5420	Tanks 4E, 5E and 6E (South Quadrant) Concrete Repair Work	29	14-Jul-21	14-Jul-21	23-Aug-21	23-Aug-21	0	\$643,900.00	Conco						
A3840	Modifications to Odor Control Panels for Tank 4E, 5E, 6E	5	15-Jul-21	03-Sep-21	21-Jul-21	10-Sep-21	36	\$15,000.00	KWH						
A2330	East Basin - Emergency Shutdown (anticipated two weeks interruption)	10	24-Aug-21	24-Aug-21	07-Sep-21	07-Sep-21	0	\$30,000.00							
A2390	Re-Cleaning / Sanitize	2	08-Sep-21	08-Sep-21	09-Sep-21	09-Sep-21	0	\$0.00	VPC						
A4980	Tanks 4E, 5E, 6E - System Testing	1	10-Sep-21	10-Sep-21	10-Sep-21	10-Sep-21	0	\$101,343.00							
A2310	WPTP - South Quadrant (4E, 5E, 6E) - Operational Testing	5	13-Sep-21	13-Sep-21	17-Sep-21	17-Sep-21	0	\$0.00							
A3810	Re-Install Removed Odor Control Panels & Flatbar Tanks 4E, 5E, 6E	5	13-Sep-21	13-Sep-21	17-Sep-21	17-Sep-21	0	\$22,500.00							
A3820	Re-Install Removed Handrail Tanks 4E, 5E, 6E	5	13-Sep-21	13-Sep-21	17-Sep-21	17-Sep-21	0	\$10,000.00							
A2200	East Basin - Constraint End	0			17-Sep-21	17-Sep-21	0	\$0.00							
A2510	East In-Basin Work Complete	0			17-Sep-21	17-Sep-21	0	\$0.00							



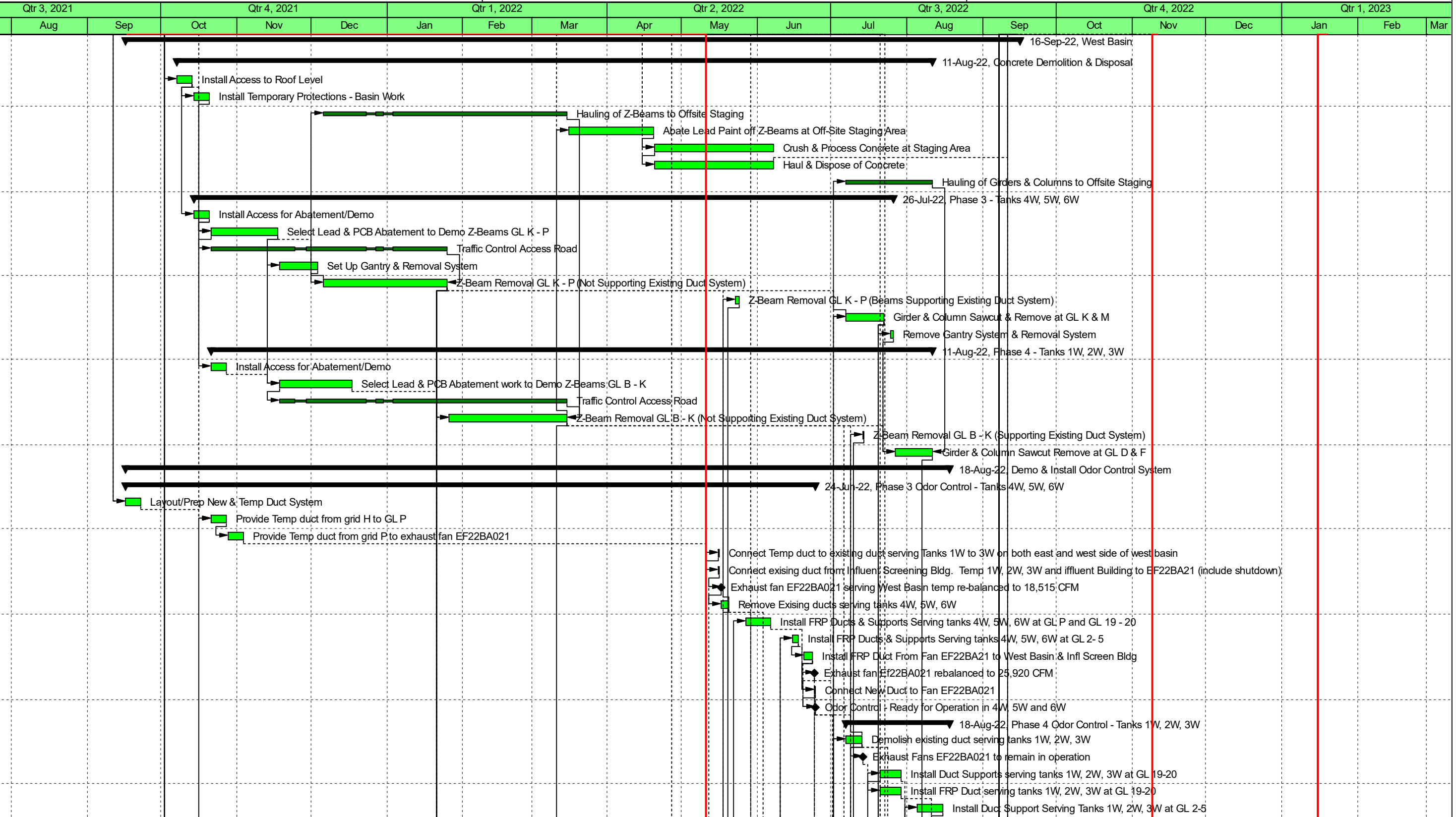
█ Remaining Level of Effort   
 █ Actual Level of Effort   
 █ Critical Remaining Work   
  Summary  
█ Actual Work   
 ◆ Milestone



█ Remaining Level of Effort    █ Remaining Work    ▶ Summary  
█ Actual Level of Effort    █ Critical Remaining Work  
█ Actual Work    ◆ Milestone

Activity ID	Activity Name	Original Duration	Early Start	Late Start	Early Finish	Late Finish	Total Float	Budgeted Expense Cost	Subcontractors	Qtr 2, 2021					Qtr 3, 2021	
										Mar	Apr	May	Jun	Jul		
<b>West Basin</b>																
<b>Concrete Demolition &amp; Disposal</b>																
A4320	Install Access to Roof Level	5	07-Oct-21	03-Feb-22	13-Oct-21	09-Feb-22	81	\$0.00								
A3510	Install Temporary Protections - Basin Work	5	14-Oct-21	10-Feb-22	20-Oct-21	16-Feb-22	81	\$15,000.00								
A4300	Hauling of Z-Beams to Offsite Staging	70	06-Dec-21	31-Mar-22	15-Mar-22	12-Jul-22	85	\$125,000.00								
A5310	Abate Lead Paint off Z-Beams at Off-Site Staging Area	25	16-Mar-22	22-Aug-22	19-Apr-22	23-Sep-22	113	\$300,000.00								
A5320	Crush & Process Concrete at Staging Area	35	20-Apr-22	26-Sep-22	07-Jun-22	11-Nov-22	113	\$250,000.00								
A5330	Haul & Dispose of Concrete	35	20-Apr-22	26-Sep-22	07-Jun-22	11-Nov-22	113	\$124,712.50	OMA							
A4310	Hauling of Girders & Columns to Offsite Staging	26	07-Jul-22	05-Oct-22	11-Aug-22	09-Nov-22	64	\$50,000.00								
<b>Phase 3 - Tanks 4W, 5W, 6W</b>																
A5370	Install Access for Abatement/Demo	5	14-Oct-21	10-Feb-22	20-Oct-21	16-Feb-22	81	\$25,000.00								
A4250	Select Lead & PCB Abatement to Demo Z-Beams GL K - P	20	21-Oct-21	17-Feb-22	17-Nov-21	16-Mar-22	81	\$250,000.00	PNE							
A5390	Traffic Control Access Road	65	21-Oct-21	17-Feb-22	25-Jan-22	18-May-22	81	\$42,500.00								
A4260	Set Up Gantry & Removal System	10	18-Nov-21	17-Mar-22	03-Dec-21	30-Mar-22	81	\$140,000.00								
A4270	Z-Beam Removal GL K - P (Not Supporting Existing Duct System)	35	06-Dec-21	31-Mar-22	25-Jan-22	18-May-22	81	\$237,440.00								
A5490	Z-Beam Removal GL K - P (Beams Supporting Existing Duct System)	2	23-May-22	25-May-22	24-May-22	26-May-22	2	\$13,440.00								
A4280	Girder & Column Sawcut & Remove at GL K & M	12	07-Jul-22	05-Oct-22	22-Jul-22	20-Oct-22	64	\$162,500.00								
A4290	Remove Gantry System & Removal System	2	25-Jul-22	21-Oct-22	26-Jul-22	24-Oct-22	64	\$90,000.00								
<b>Phase 4 - Tanks 1W, 2W, 3W</b>																
A5380	Install Access for Abatement/Demo	5	21-Oct-21	20-Apr-22	27-Oct-21	26-Apr-22	125	\$25,000.00								
A4220	Select Lead & PCB Abatement work to Demo Z-Beams GL B - K	20	18-Nov-21	27-Apr-22	17-Dec-21	24-May-22	110	\$250,000.00	PNE							
A5400	Traffic Control Access Road	80	18-Nov-21	27-Apr-22	15-Mar-22	12-Jul-22	85	\$42,500.00								
A4230	Z-Beam Removal GL B - K (Not Supporting Existing Duct System)	35	26-Jan-22	25-May-22	15-Mar-22	12-Jul-22	85	\$356,160.00								
A5590	Z-Beam Removal GL B - K (Supporting Existing Duct System)	1	14-Jul-22	20-Jul-22	14-Jul-22	20-Jul-22	4	\$17,920.00								
A4240	Girder & Column Sawcut Remove at GL D & F	12	27-Jul-22	25-Oct-22	11-Aug-22	09-Nov-22	64	\$162,500.00								
<b>Demo &amp; Install Odor Control System</b>																
<b>Phase 3 Odor Control - Tanks 4W, 5W, 6W</b>																
A3380	Layout/Prep New & Temp Duct System	5	16-Sep-21	27-Apr-22	22-Sep-21	03-May-22	155	\$30,000.00	Capital							
A2810	Provide Temp duct from grid H to GL P	5	21-Oct-21	04-May-22	27-Oct-21	10-May-22	135	\$105,000.00	Capital							
A2840	Provide Temp duct from grid P to exhaust fan EF22BA021	5	28-Oct-21	11-May-22	03-Nov-21	17-May-22	135	\$20,000.00	Capital							
A2820	Connect Temp duct to existing duct serving Tanks 1W to 3W on both east and west side of west basin	1	16-May-22	18-May-22	16-May-22	18-May-22	2	\$2,500.00	Capital							
A2830	Connect existing duct from Influent Screening Bldg. Temp 1W, 2W, 3W and influent Building to EF22BA21	1	16-May-22	18-May-22	16-May-22	18-May-22	2	\$2,500.00	Capital							
A2850	Exhaust fan EF22BA021 serving West Basin temp re-balanced to 18,515 CFM	0	17-May-22	19-May-22			2	\$5,000.00	Capital							
A2860	Remove Existing ducts serving tanks 4W, 5W, 6W	4	17-May-22	19-May-22	20-May-22	24-May-22	2	\$175,000.00	PNE							
A5510	Install FRP Ducts & Supports Serving tanks 4W, 5W, 6W at GL P and GL 19 - 20	7	27-May-22	17-Jun-22	06-Jun-22	27-Jun-22	15	\$85,000.00	Capital							
A2880	Install FRP Ducts & Supports Serving tanks 4W, 5W, 6W at GL 2 - 5	3	15-Jun-22	17-Jun-22	17-Jun-22	21-Jun-22	2	\$30,000.00	Capital							
A2890	Install FRP Duct From Fan EF22BA21 to West Basin & Infl Screen Bldg	4	20-Jun-22	22-Jun-22	23-Jun-22	27-Jun-22	2	\$60,000.00	Capital							
A2900	Exhaust fan Ef22BA021 rebalanced to 25,920 CFM	0	24-Jun-22	29-Jun-22			3	\$5,000.00	Capital							
A5520	Connect New Duct to Fan EF22BA021	1	24-Jun-22	28-Jun-22	24-Jun-22	28-Jun-22	2	\$5,000.00	Capital							
A2570	Odor Control - Ready for Operation in 4W, 5W and 6W	0			24-Jun-22	06-Jul-22	8	\$0.00								
<b>Phase 4 Odor Control - Tanks 1W, 2W, 3W</b>																
A2910	Demolish existing duct serving tanks 1W, 2W, 3W	5	07-Jul-22	13-Jul-22	13-Jul-22	19-Jul-22	4	\$175,000.00	PNE							
A2920	Exhaust Fans EF22BA021 to remain in operation	0	14-Jul-22	02-Aug-22			13	\$0.00								
A2930	Install Duct Supports serving tanks 1W, 2W, 3W at GL 19-20	7	21-Jul-22	02-Aug-22	29-Jul-22	10-Aug-22	8	\$20,000.00	Capital							
A5610	Install FRP Duct serving tanks 1W, 2W, 3W at GL 19-20	7	21-Jul-22	02-Aug-22	29-Jul-22	10-Aug-22	8	\$32,500.00	Capital							
A3920	Install Duct Support Serving Tanks 1W, 2W, 3W at GL 2-5	7	05-Aug-22	11-Aug-22	15-Aug-22	19-Aug-22	4	\$20,000.00	Capital							

█ Remaining Level of Effort    █ Remaining Work    █ Summary  
█ Actual Level of Effort    █ Critical Remaining Work  
█ Actual Work    ◆ Milestone



█ Remaining Level of Effort    █ Remaining Work    ▶ Summary  
█ Actual Level of Effort    █ Critical Remaining Work  
█ Actual Work    ◆ Milestone

Activity ID	Activity Name	Original Duration	Early Start	Late Start	Early Finish	Late Finish	Total Float	Budgeted Expense Cost	Subcontractors	Qtr 2, 2021					Qtr 3, 2021
										Mar	Apr	May	Jun	Jul	
A5620	Install FRP Duct Serving Tanks 1W, 2W, 3W at GL 2-5	7	05-Aug-22	11-Aug-22	15-Aug-22	19-Aug-22	4	\$32,500.00	Capital						
A2940	Connect new ductwork serving tanks 1W, 2W, 3W at column H	2	16-Aug-22	22-Aug-22	17-Aug-22	23-Aug-22	4	\$5,000.00	Capital						
A2600	Odor Control - Ready for Operation 1W, 2W, 3W	0			18-Aug-22	23-Aug-22	4	\$0.00							
A2950	West Basin FA exhaust complete - balance per M132, balance EF22BA021 to M002	0	18-Aug-22	23-Aug-22			4	\$5,000.00	Capital						
<b>Removal and Replace Electrical and Lighting System</b>		<b>239</b>	<b>07-Oct-21</b>	<b>20-Apr-22</b>	<b>12-Sep-22</b>	<b>11-Nov-22</b>	<b>44</b>	<b>\$1,326,000.00</b>							
<b>Phase 3 - Tanks 4W, 5W, 6W</b>		<b>190</b>	<b>07-Oct-21</b>	<b>20-Apr-22</b>	<b>05-Jul-22</b>	<b>11-Nov-22</b>	<b>93</b>	<b>\$714,750.00</b>							
A3250	Install Temp Power & Temp Lighting	10	07-Oct-21	20-Apr-22	20-Oct-21	03-May-22	135	\$50,000.00	SHJ						
A3260	Permanent Supports for Primary E-W conduit runs	10	07-Oct-21	20-Apr-22	20-Oct-21	03-May-22	135	\$40,000.00	KWH						
A3270	Temp Supports under N-S conduit runs at the east and west ends of the basin	10	07-Oct-21	20-Apr-22	20-Oct-21	03-May-22	135	\$0.00							
A5570	Layout Electrical Work	1	07-Oct-21	20-Apr-22	07-Oct-21	20-Apr-22	135	\$25,000.00	SHJ						
A3280	Demolition - Start Milestone	0	21-Oct-21	04-May-22			135	\$0.00							
A3300	Isolate Circuits, Disc. and Remove Conductors 4W, 5W, 6W	4	16-May-22	16-May-22	19-May-22	19-May-22	0	\$40,000.00	SHJ						
A3290	South Quadrant - 4W to 6W (out of operation)	0	16-May-22	16-May-22			0	\$0.00							
A3330	Remove and replace light fixtures under canopy roof	10	20-May-22	01-Jun-22	02-Jun-22	14-Jun-22	8	\$107,500.00	SHJ						
A4130	Install Conduit on Support System at GL H	8	20-May-22	20-May-22	31-May-22	31-May-22	0	\$50,000.00	SHJ						
A3390	Install Skum Skimmer Motors	5	20-May-22	15-Jun-22	26-May-22	21-Jun-22	18	\$3,750.00	SHJ						
A3310	Install new Conduit Chase GL 14W/15W	5	01-Jun-22	01-Jun-22	07-Jun-22	07-Jun-22	0	\$68,500.00	SHJ						
A3490	Remove and replace wiring devices 4W, 5W, 6W	5	03-Jun-22	15-Jun-22	09-Jun-22	21-Jun-22	8	\$92,500.00	SHJ						
A3320	Install Conduits at 3W/4W	5	08-Jun-22	15-Jun-22	14-Jun-22	21-Jun-22	5	\$20,000.00	SHJ						
A4120	Install Ligth Poles and Conduits to	10	08-Jun-22	08-Jun-22	21-Jun-22	21-Jun-22	0	\$112,500.00	SHJ						
A3340	Pull new conductors and connect equipment and devices	5	22-Jun-22	22-Jun-22	28-Jun-22	28-Jun-22	0	\$95,000.00	SHJ						
A3350	Remove existing conduits no longer in use	5	29-Jun-22	07-Nov-22	05-Jul-22	11-Nov-22	93	\$10,000.00	SHJ						
<b>Phase 4 - Tanks 1W, 2W, 3W</b>		<b>229</b>	<b>21-Oct-21</b>	<b>18-May-22</b>	<b>12-Sep-22</b>	<b>11-Nov-22</b>	<b>44</b>	<b>\$611,250.00</b>							
A5270	Temp Power & Temp Lighting	5	21-Oct-21	18-May-22	27-Oct-21	24-May-22	145	\$50,000.00	SHJ						
A3370	North Quadrant - Once tanks 4W to 6W are back in Service	0	07-Jul-22	11-Jul-22			2	\$0.00							
A4140	Isolate Circuits serving equipment and devices for tanks 1W, 2W, 3W Disc. and remove conductors	5	07-Jul-22	11-Jul-22	13-Jul-22	15-Jul-22	2	\$40,000.00	SHJ						
A4150	Install Conduit at gridline 14W/15W	5	14-Jul-22	18-Jul-22	20-Jul-22	22-Jul-22	2	\$50,000.00	SHJ						
A4160	Install Conduit at 3W/4W	5	21-Jul-22	25-Jul-22	27-Jul-22	29-Jul-22	2	\$50,000.00	SHJ						
A4170	Remove and replace light fixtures under the canopy roof	10	28-Jul-22	01-Aug-22	10-Aug-22	12-Aug-22	2	\$107,500.00	SHJ						
A5040	Install Skum Skimmer Motors	5	28-Jul-22	22-Aug-22	03-Aug-22	26-Aug-22	17	\$3,750.00	SHJ						
A4190	Remove and replace wiring devices serving tanks 1W, 2W, 3W	5	11-Aug-22	22-Aug-22	17-Aug-22	26-Aug-22	7	\$92,500.00	SHJ						
A4180	Install Ligth Poles and Conduits to	10	11-Aug-22	15-Aug-22	24-Aug-22	26-Aug-22	2	\$112,500.00	SHJ						
A4200	Pull new conductors and connect equipment and devices	8	25-Aug-22	29-Aug-22	05-Sep-22	07-Sep-22	2	\$95,000.00	SHJ						
A4210	Remove existing conduits no longer in use	5	06-Sep-22	07-Nov-22	12-Sep-22	11-Nov-22	44	\$10,000.00	SHJ						
<b>Other New Construction</b>		<b>223</b>	<b>07-Oct-21</b>	<b>19-May-22</b>	<b>19-Aug-22</b>	<b>11-Nov-22</b>	<b>60</b>	<b>\$820,500.00</b>							
<b>Phase 3 - Tanks 4W, 5W, 6W</b>		<b>215</b>	<b>07-Oct-21</b>	<b>19-May-22</b>	<b>09-Aug-22</b>	<b>11-Nov-22</b>	<b>68</b>	<b>\$427,750.00</b>							
A4360	Demo/Removal of Existing EPDM Roofing Membrane	5	07-Oct-21	03-Oct-22	13-Oct-21	07-Oct-22	253	\$20,000.00	PNE						
A4050	Access For Steel/FRP Roof & Duct Support Steel Install	100	26-Jan-22	23-May-22	14-Jun-22	16-Jun-22	2	\$20,000.00							
A4060	Drill & Dowel for Roof Install	6	26-Jan-22	23-May-22	02-Feb-22	30-May-22	83	\$11,500.00							
A4080	Canopy Roof Expansion Joint Modifications Between GL P-Q	4	26-Jan-22	11-Oct-22	31-Jan-22	14-Oct-22	184	\$10,000.00	KWH						
A4000	Grout Back Z-Beam Voids (Not Z-beams Supporting Existing Duct)	8	26-Jan-22	19-May-22	04-Feb-22	30-May-22	81	\$22,500.00							
A5480	Install EPDM Membrane over Existing Flat Roof	10	01-Feb-22	17-Oct-22	14-Feb-22	28-Oct-22	184	\$75,000.00	Queen						
A4030	Concrete Repairs per S202	2	07-Feb-22	10-Nov-22	08-Feb-22	11-Nov-22	198	\$5,000.00							
A4040	Fill & Cap Rain Leader	2	07-Feb-22	10-Nov-22	08-Feb-22	11-Nov-22	198	\$3,750.00							
A5550	Handrail & Safety Gate Mod S451	1	16-May-22	11-Nov-22	16-May-22	11-Nov-22	129	\$5,000.00	KWH						
A4070	Install Steel for Duct Supports at GL 19-20	4	23-May-22	13-Jun-22	26-May-22	16-Jun-22	15	\$12,500.00	KWH						

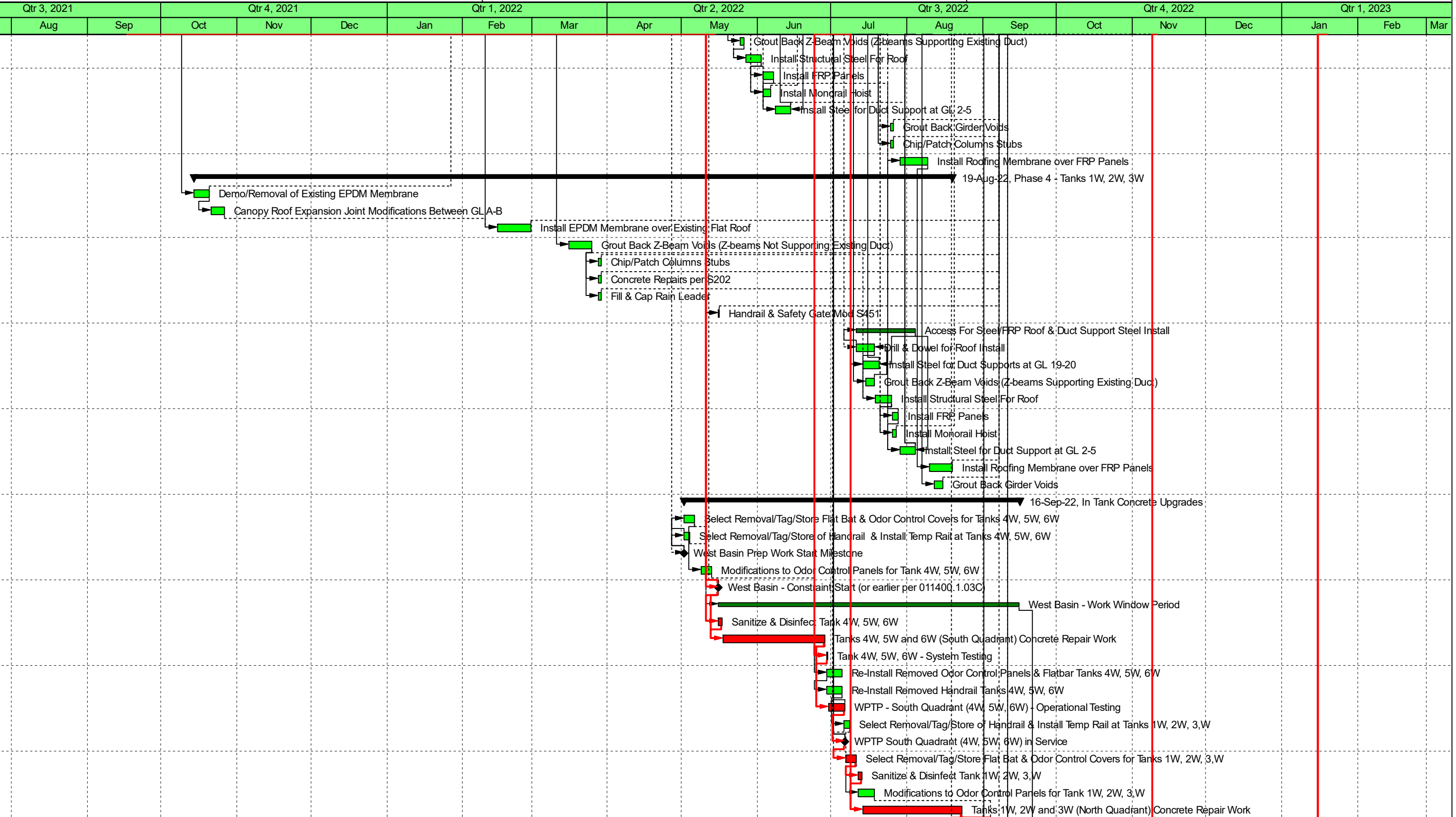
█ Remaining Level of Effort   
 █ Remaining Work   
  Summary  
█ Actual Level of Effort   
 █ Critical Remaining Work  
█ Actual Work   
 ◆ ◆ Milestone



█ Remaining Level of Effort    █ Remaining Work    ▶ Summary  
█ Actual Level of Effort    █ Critical Remaining Work  
█ Actual Work    ◆ Milestone

Activity ID	Activity Name	Original Duration	Early Start	Late Start	Early Finish	Late Finish	Total Float	Budgeted Expense Cost	Subcontractors	Qtr 2, 2021					Qtr 3, 2021
										Mar	Apr	May	Jun	Jul	
A5500	Grout Back Z-Beam Voids (Z-beams Supporting Existing Duct)	2	25-May-22	27-May-22	26-May-22	30-May-22	2	\$2,500.00							
A4090	Install Structural Steel For Roof	5	27-May-22	31-May-22	02-Jun-22	06-Jun-22	2	\$135,000.00	KWH						
A4100	Install FRP Panels	3	03-Jun-22	07-Jun-22	07-Jun-22	09-Jun-22	2	\$12,500.00							
A4970	Install Monorail Hoist	2	03-Jun-22	20-Jun-22	06-Jun-22	21-Jun-22	11	\$16,250.00	KWH						
A4110	Install Steel for Duct Support at GL 2-5	5	08-Jun-22	10-Jun-22	14-Jun-22	16-Jun-22	2	\$12,500.00	KWH						
A4010	Grout Back Girder Voids	2	25-Jul-22	10-Nov-22	26-Jul-22	11-Nov-22	78	\$3,750.00							
A4020	Chip/Patch Columns Stubs	2	25-Jul-22	10-Nov-22	26-Jul-22	11-Nov-22	78	\$10,000.00							
A5460	Install Roofing Membrane over FRP Panels	8	29-Jul-22	21-Oct-22	09-Aug-22	01-Nov-22	60	\$50,000.00	Queen						
<b>Phase 4 - Tanks 1W, 2W, 3W</b>		<b>218</b>	<b>14-Oct-21</b>	<b>13-Jul-22</b>	<b>19-Aug-22</b>	<b>11-Nov-22</b>	<b>60</b>	<b>\$392,750.00</b>							
A5070	Demo/Removal of Existing EPDM Membrane	5	14-Oct-21	10-Oct-22	20-Oct-21	14-Oct-22	253	\$20,000.00	PNE						
A4370	Canopy Roof Expansion Joint Modifications Between GL A-B	4	21-Oct-21	25-Oct-22	26-Oct-21	28-Oct-22	259	\$10,000.00	KWH						
A4380	Install EPDM Membrane over Existing Flat Roof	10	15-Feb-22	31-Oct-22	28-Feb-22	11-Nov-22	184	\$75,000.00	Queen						
A4390	Grout Back Z-Beam Voids (Z-beams Not Supporting Existing Duct)	8	16-Mar-22	13-Jul-22	25-Mar-22	22-Jul-22	85	\$22,500.00							
A4410	Chip/Patch Columns Stubs	2	28-Mar-22	10-Nov-22	29-Mar-22	11-Nov-22	163	\$10,000.00							
A4420	Concrete Repairs per S202	2	28-Mar-22	10-Nov-22	29-Mar-22	11-Nov-22	163	\$5,000.00							
A4430	Fill & Cap Rain Leader	2	28-Mar-22	10-Nov-22	29-Mar-22	11-Nov-22	163	\$3,750.00							
A5560	Handrail & Safety Gate Mod S451	1	16-May-22	11-Nov-22	16-May-22	11-Nov-22	129	\$5,000.00	KWH						
A4340	Access For Steel/FRP Roof & Duct Support Steel Install	19	11-Jul-22	15-Jul-22	04-Aug-22	10-Aug-22	4	\$20,000.00							
A4350	Drill & Dowel for Roof Install	6	11-Jul-22	15-Jul-22	18-Jul-22	22-Jul-22	4	\$11,500.00							
A4450	Install Steel for Duct Supports at GL 19-20	5	14-Jul-22	26-Jul-22	20-Jul-22	01-Aug-22	8	\$17,500.00	KWH						
A5600	Grout Back Z-Beam Voids (Z-beams Supporting Existing Duct)	2	15-Jul-22	21-Jul-22	18-Jul-22	22-Jul-22	4	\$2,500.00							
A4400	Install Structural Steel For Roof	5	19-Jul-22	25-Jul-22	25-Jul-22	29-Jul-22	4	\$90,000.00	KWH						
A4440	Install FRP Panels	3	26-Jul-22	01-Aug-22	28-Jul-22	03-Aug-22	4	\$12,500.00							
A5060	Install Monorail Hoist	2	26-Jul-22	25-Aug-22	27-Jul-22	26-Aug-22	22	\$16,250.00	KWH						
A4460	Install Steel for Duct Support at GL 2-5	5	29-Jul-22	04-Aug-22	04-Aug-22	10-Aug-22	4	\$17,500.00	KWH						
A5470	Install Roofing Membrane over FRP Panels	8	10-Aug-22	02-Nov-22	19-Aug-22	11-Nov-22	60	\$50,000.00	Queen						
A4470	Grout Back Girder Voids	2	12-Aug-22	10-Nov-22	15-Aug-22	11-Nov-22	64	\$3,750.00							
<b>In Tank Concrete Upgrades</b>		<b>99</b>	<b>02-May-22</b>	<b>09-May-22</b>	<b>16-Sep-22</b>	<b>15-Sep-22</b>	<b>0</b>	<b>\$1,850,486.00</b>							
A5130	Select Removal/Tag/Store Flat Bat & Odor Control Covers for Tanks 4W, 5W, 6W	5	02-May-22	09-May-22	06-May-22	13-May-22	5	\$20,000.00							
A5140	Select Removal/Tag/Store of Handrail & Install Temp Rail at Tanks 4W, 5W, 6W	3	02-May-22	09-May-22	04-May-22	11-May-22	5	\$7,500.00							
A5250	West Basin Prep Work Start Milestone	0	02-May-22	09-May-22			5	\$0.00							
A5160	Modifications to Odor Control Panels for Tank 4W, 5W, 6W	5	09-May-22	23-Jun-22	13-May-22	29-Jun-22	33	\$15,000.00	KWH						
A2450	West Basin - Constraint Start (or earlier per 011400.1.03C)	0	16-May-22	13-May-22			0	\$0.00							
A2490	West Basin - Work Window Period	89	16-May-22	16-May-22	15-Sep-22	15-Sep-22	0	\$0.00							
A5150	Sanitize & Disinfect Tank 4W, 5W, 6W	2	16-May-22	16-May-22	17-May-22	17-May-22	0	\$90,000.00	VPC						
A2550	Tanks 4W, 5W and 6W (South Quadrant) Concrete Repair Work	30	18-May-22	18-May-22	28-Jun-22	28-Jun-22	0	\$643,900.00	Conco						
A5050	Tank 4W, 5W, 6W - System Testing	1	29-Jun-22	29-Jun-22	29-Jun-22	29-Jun-22	0	\$101,343.00							
A5170	Re-Install Removed Odor Control Panels & Flatbar Tanks 4W, 5W, 6W	5	29-Jun-22	30-Jun-22	05-Jul-22	06-Jul-22	1	\$22,500.00							
A5180	Re-Install Removed Handrail Tanks 4W, 5W, 6W	5	29-Jun-22	30-Jun-22	05-Jul-22	06-Jul-22	1	\$10,000.00							
A2560	WPTP - South Quadrant (4W, 5W, 6W) - Operational Testing	5	30-Jun-22	30-Jun-22	06-Jul-22	06-Jul-22	0	\$0.00							
A5200	Select Removal/Tag/Store of Handrail & Install Temp Rail at Tanks 1W, 2W, 3,W	3	06-Jul-22	07-Jul-22	08-Jul-22	11-Jul-22	1	\$7,500.00							
A3410	WPTP South Quadrant (4W, 5W, 6W) in Service	0			06-Jul-22	06-Jul-22	0	\$0.00							
A5190	Select Removal/Tag/Store Flat Bat & Odor Control Covers for Tanks 1W, 2W, 3,W	3	07-Jul-22	07-Jul-22	11-Jul-22	11-Jul-22	0	\$20,000.00							
A5210	Sanitize & Disinfect Tank 1W, 2W, 3,W	2	12-Jul-22	12-Jul-22	13-Jul-22	13-Jul-22	0	\$90,000.00	VPC						
A5220	Modifications to Odor Control Panels for Tank 1W, 2W, 3,W	5	12-Jul-22	02-Sep-22	18-Jul-22	08-Sep-22	38	\$15,000.00	KWH						
A5410	Tanks 1W, 2W and 3W (North Quadrant) Concrete Repair Work	29	14-Jul-22	14-Jul-22	23-Aug-22	23-Aug-22	0	\$643,900.00	Conco						

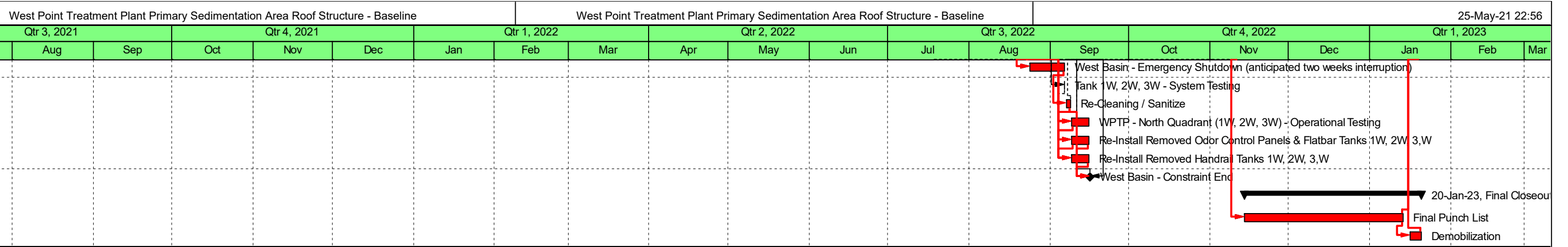
█ Remaining Level of Effort   
 █ Remaining Work   
 ▬ Summary  
█ Actual Level of Effort   
 █ Critical Remaining Work  
█ Actual Work   
 ◆ ◆ Milestone





Activity ID	Activity Name	Original Duration	Early Start	Late Start	Early Finish	Late Finish	Total Float	Budgeted Expense Cost	Subcontractors	Qtr 2, 2021					Qtr 3, 2021
										Mar	Apr	May	Jun	Jul	
A2610	West Basin - Emergency Shutdown (anticipated two weeks interruption)	10	24-Aug-22	24-Aug-22	06-Sep-22	06-Sep-22	0	\$30,000.00							
A3400	Tank 1W, 2W, 3W - System Testing	1	06-Sep-22	08-Sep-22	06-Sep-22	08-Sep-22	2	\$101,343.00							
A2620	Re-Cleaning / Sanitize	2	07-Sep-22	07-Sep-22	08-Sep-22	08-Sep-22	0	\$0.00							
A2590	WPTP - North Quadrant (1W, 2W, 3W) - Operational Testing	5	09-Sep-22	09-Sep-22	15-Sep-22	15-Sep-22	0	\$0.00							
A5230	Re-Install Removed Odor Control Panels & Flatbar Tanks 1W, 2W, 3,W	5	09-Sep-22	09-Sep-22	15-Sep-22	15-Sep-22	0	\$22,500.00							
A5240	Re-Install Removed Handrail Tanks 1W, 2W, 3,W	5	09-Sep-22	09-Sep-22	15-Sep-22	15-Sep-22	0	\$10,000.00							
A2500	West Basin - Constraint End	0			16-Sep-22	15-Sep-22	0	\$0.00							
<b>Final Closeout Activities</b>		<b>50</b>	<b>14-Nov-22</b>	<b>14-Nov-22</b>	<b>20-Jan-23</b>	<b>20-Jan-23</b>	<b>0</b>	<b>\$304,029.00</b>							
A2250	Final Punch List	45	14-Nov-22	14-Nov-22	13-Jan-23	13-Jan-23	0	\$0.00							
A3470	Demobilization	5	16-Jan-23	16-Jan-23	20-Jan-23	20-Jan-23	0	\$304,029.00							

█ Remaining Level of Effort   
 █ Remaining Work   
 ▼ Summary  
█ Actual Level of Effort   
 █ Critical Remaining Work  
█ Actual Work   
 ◆ ◆ Milestone



Remaining Level of Effort   
 Remaining Work   
 Summary  
 Actual Level of Effort   
 Critical Remaining Work  
 Actual Work   
 Milestone